

Supplementary Materials

Figure S1. Overlaid all FT-NIR spectra of *G. elata* (a) and *R. glutinosa* (b) (not colored as their origin).

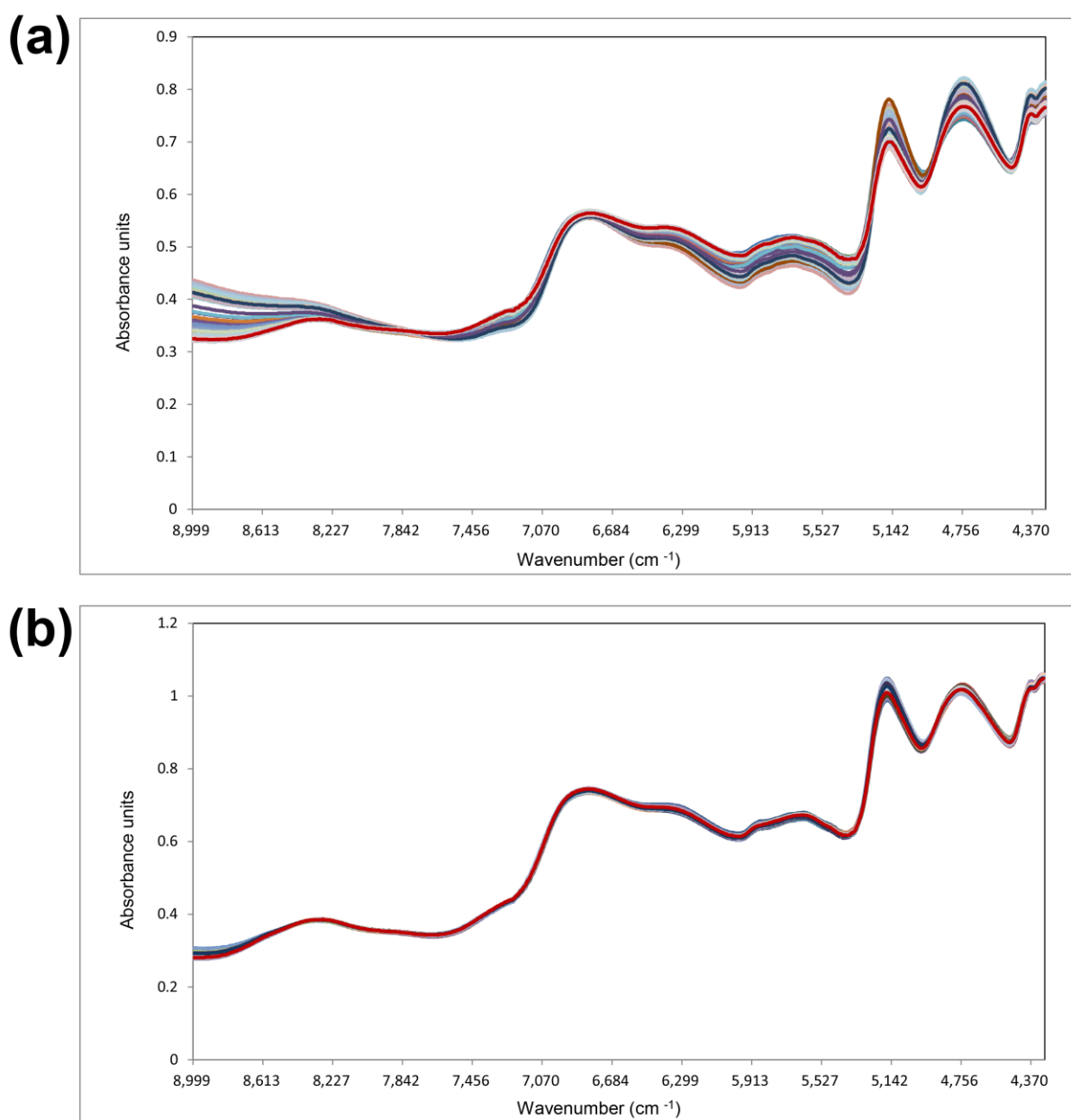


Figure S2. Overlaid all ^1H -NMR spectra of *G. elata* (a) and *R. glutinosa* (b).

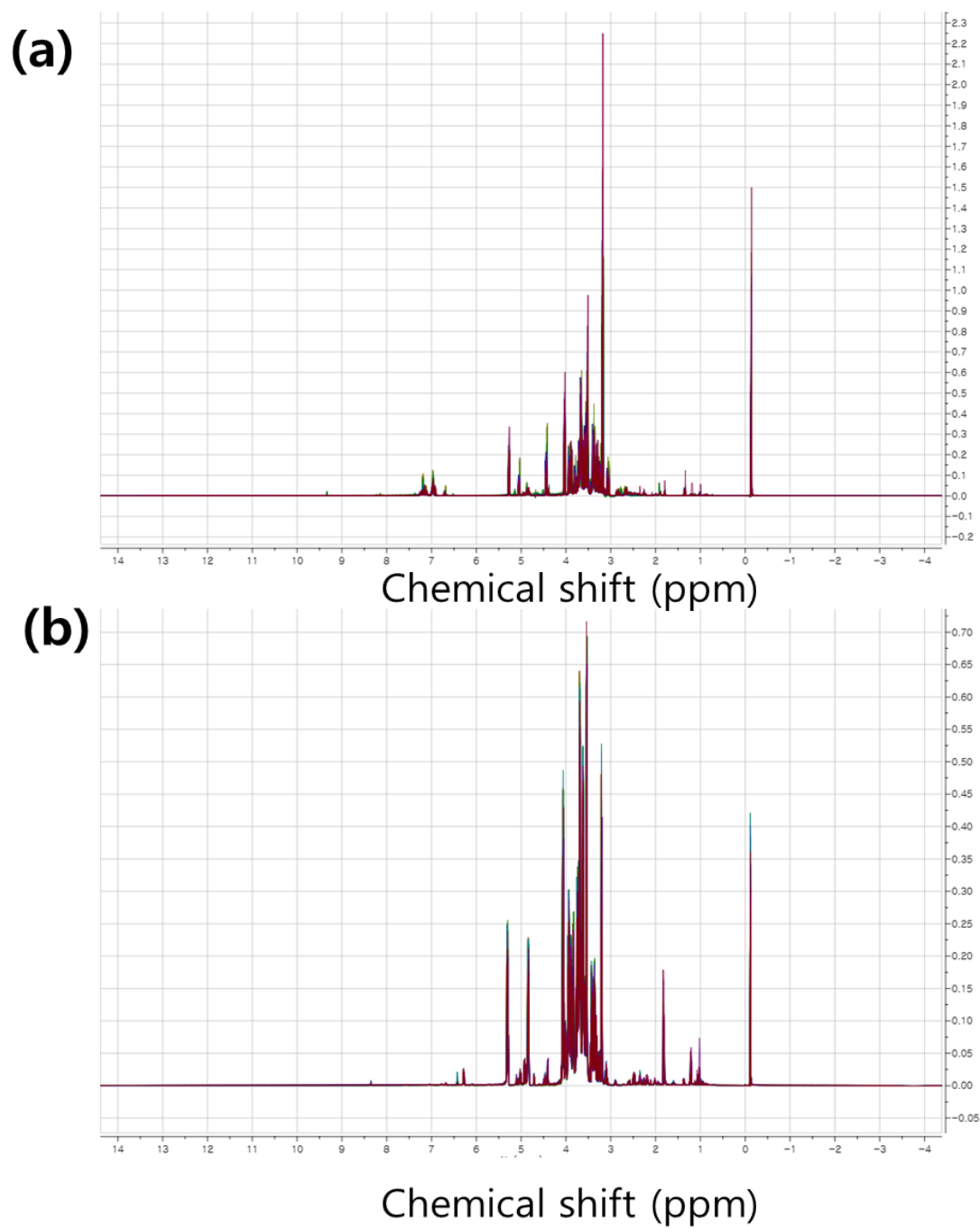


Figure S3. Overlaid all total ion chromatograms of *G. elata* (a) and *R. glutinosa* (b) acquired by LC-MS analysis.

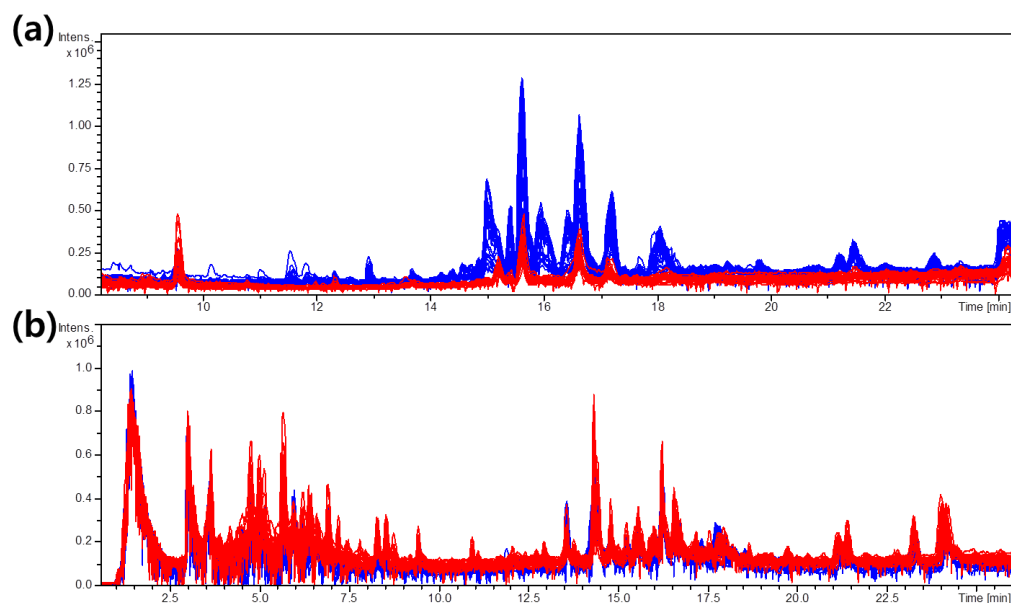


Figure S4. Overlaid all total ion chromatograms of *G. elata* (a) and *R. glutinosa* (b) acquired by GC-MS analysis.

