

## Supplementary Information (SI)

### Investigating of *N*-terminal amino function of Arg<sub>10</sub>-teixobactin

Shimaa A. H. Abdel Monaim<sup>1</sup>, Sikabwe Noki<sup>1</sup>, Estelle J. Ramchuran<sup>1</sup>, Ayman El-Faham<sup>2,3</sup>, Fernando Albericio<sup>1,2,4,5,6,\*</sup> and Beatriz G. de la Torre<sup>1,7,\*</sup>

<sup>1</sup> Catalysis and Peptide Research Unit, School of Health Sciences, University of KwaZulu-Natal, Durban 4001, South Africa; [shimaa.amin10@yahoo.com](mailto:shimaa.amin10@yahoo.com), [sikabwenoki7@gmail.com](mailto:sikabwenoki7@gmail.com), [ramchurane@ukzn.ac.za](mailto:ramchurane@ukzn.ac.za)

<sup>2</sup> Department of Chemistry, College of Science, King Saud University, P.O. Box 2455, Riyadh 11451, Saudi Arabia; [aelfaham@KSU.EDU.SA](mailto:aelfaham@KSU.EDU.SA)

<sup>3</sup> Chemistry Department, Faculty of Science, Alexandria University, P.O. Box 426, Ibrahimia, Alexandria 12321, Egypt;

<sup>4</sup> School of Chemistry and Physics, University of KwaZulu-Natal, Durban 4001, South Africa; [albericio@ukzn.ac.za](mailto:albericio@ukzn.ac.za)

<sup>5</sup> Department of Organic Chemistry, University of Barcelona, Barcelona 08028, Spain; [albericio@ub.edu](mailto:albericio@ub.edu)

<sup>6</sup> CIBER-BBN, Networking Centre on Bioengineering, Biomaterials and Nanomedicine, Barcelona Science Park, Barcelona 08028, Spain

<sup>7</sup> School of Laboratory of Medicine and Medical Sciences, University of KwaZulu-Natal, Durban 4001, South Africa; [garciadelatorreb@ukzn.ac.za](mailto:garciadelatorreb@ukzn.ac.za)

\* Correspondence: [albericio@ukzn.ac.za](mailto:albericio@ukzn.ac.za); [garciadelatorreb@ukzn.ac.za](mailto:garciadelatorreb@ukzn.ac.za); Tel.: +27-614-009-144

### Table of content

Figure S1: HPLC of analogue 2	S2
Figure S2: MALDI-TOF spectra of analogue 2	S2
Figure S3: HPLC of analogue 3	S3
Figure S4: MALDI-TOF spectra of analogue 3	S3
Figure S5: HPLC of analogue 4	S4
Figure S6: MALDI-TOF spectra of analogue 4	S4
Figure S7: HPLC of analogue 5	S5
Figure S8: MALDI-TOF spectra of analogue 5	S5
Figure S9: HPLC of analogue 6	S6
Figure S10: MALDI-TOF spectra of analogue 6	S6
Figure S11: HPLC of analogue 8	S7
Figure S12: MALDI-TOF spectra of analogue 8	S7
Figure S13: HPLC of analogue 9	S8
Figure S14: MALDI-TOF spectra of analogue 9	S8
Figure S15: HPLC of analogue 10	S9
Figure S16: MALDI-TOF spectra of analogue 10	S9

Figure S1: HPLC of analogue2 (method 10-60% B in 15 min)

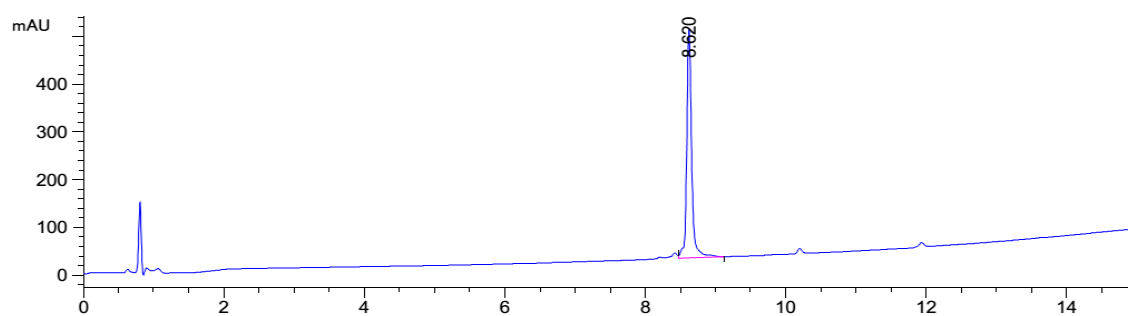


Figure S2: MALDI-TOF spectra of analogue 2 (Expected mass = 1230.4770, observed mass for  $M+H^+$ ,  $M+Na^+$ , and  $M+K^+$ )

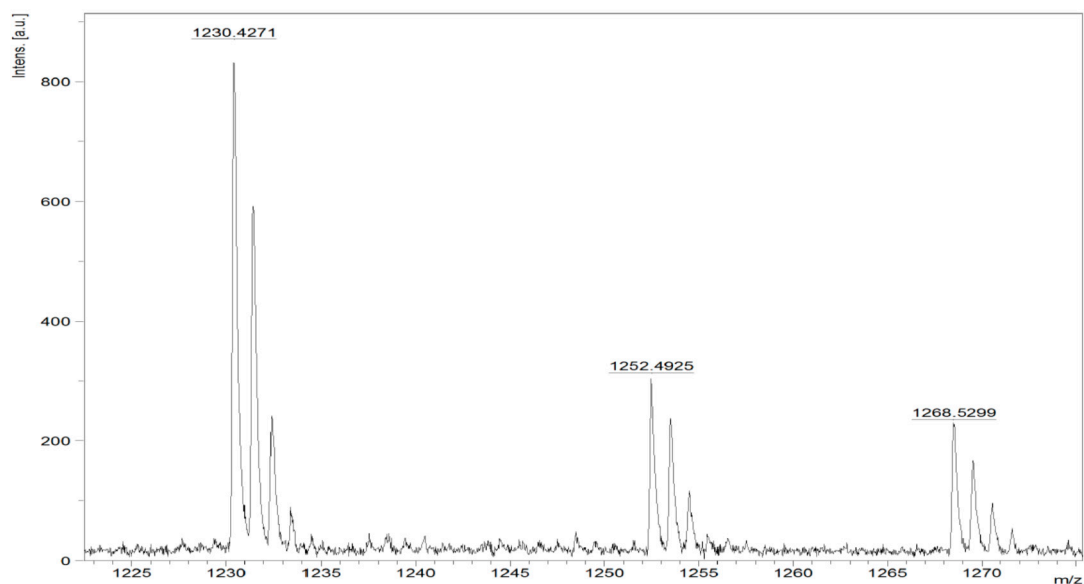
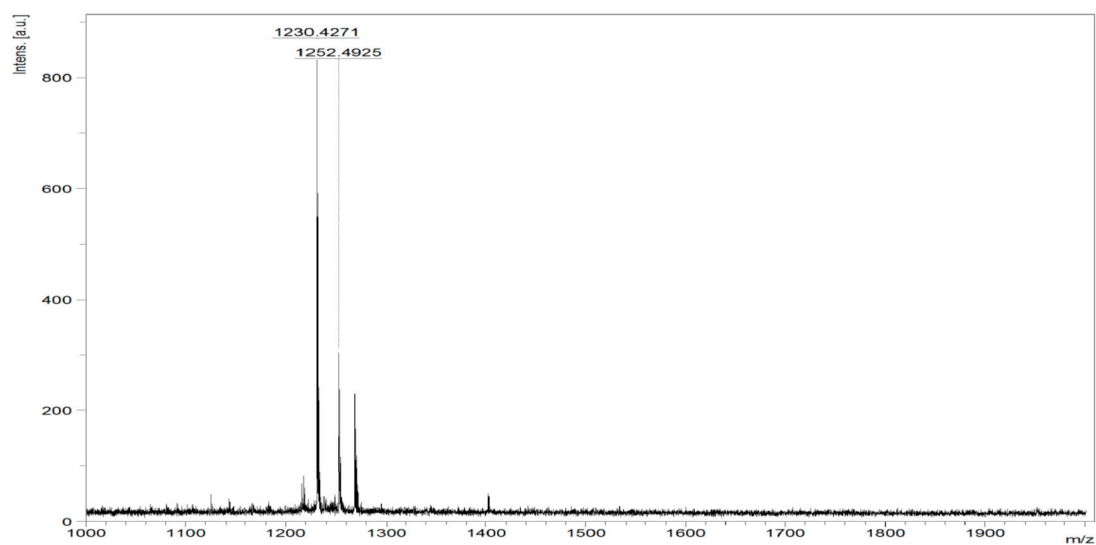


Figure S3: HPLC of analogue3 (method 25-50% B in 15 min)

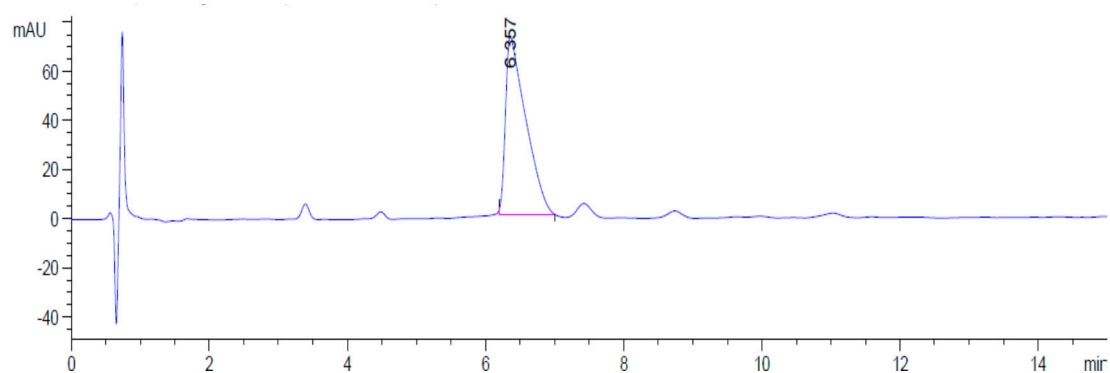


Figure S4: MALDI-TOF spectra of analogue 3 (Expected mass = 1258.5310, observed mass for  $M+H^+$ , and  $M+Na^+$ )

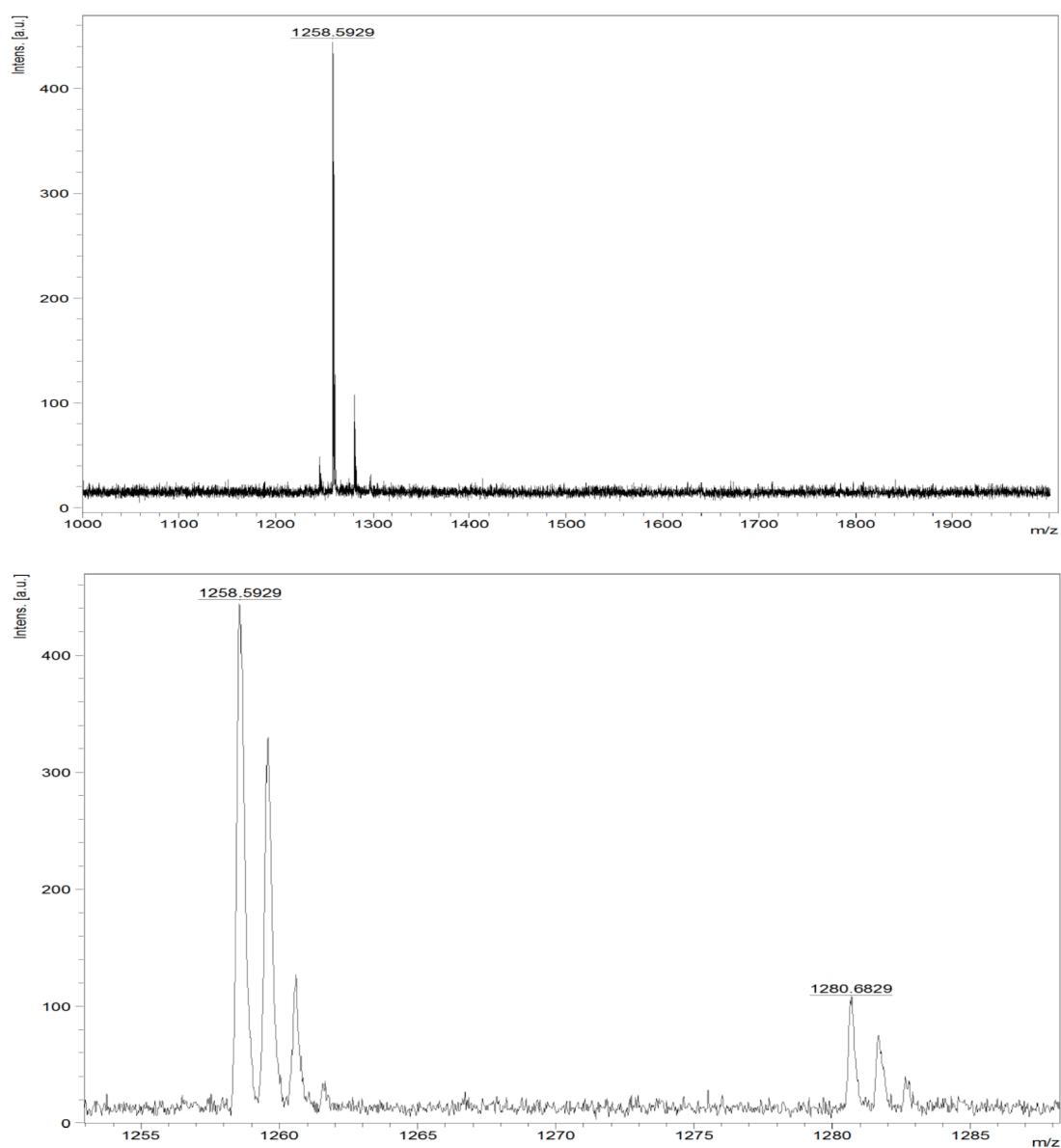


Figure S5: HPLC of analogue 4 (method 25-40% B in 15 min)

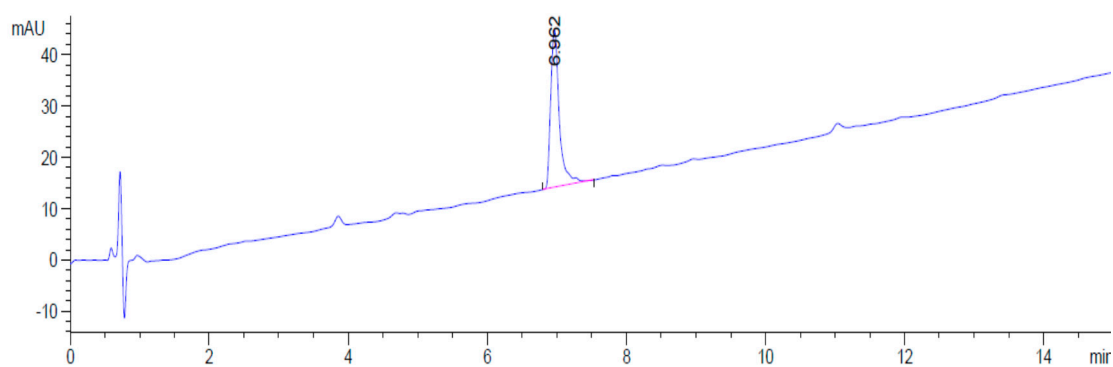


Figure S6: MALDI-TOF spectra of analogue 4 (Expected mass = 1320.6020, observed mass for  $M+H^+$ ,  $M+Na^+$ , and  $M+K^+$ )

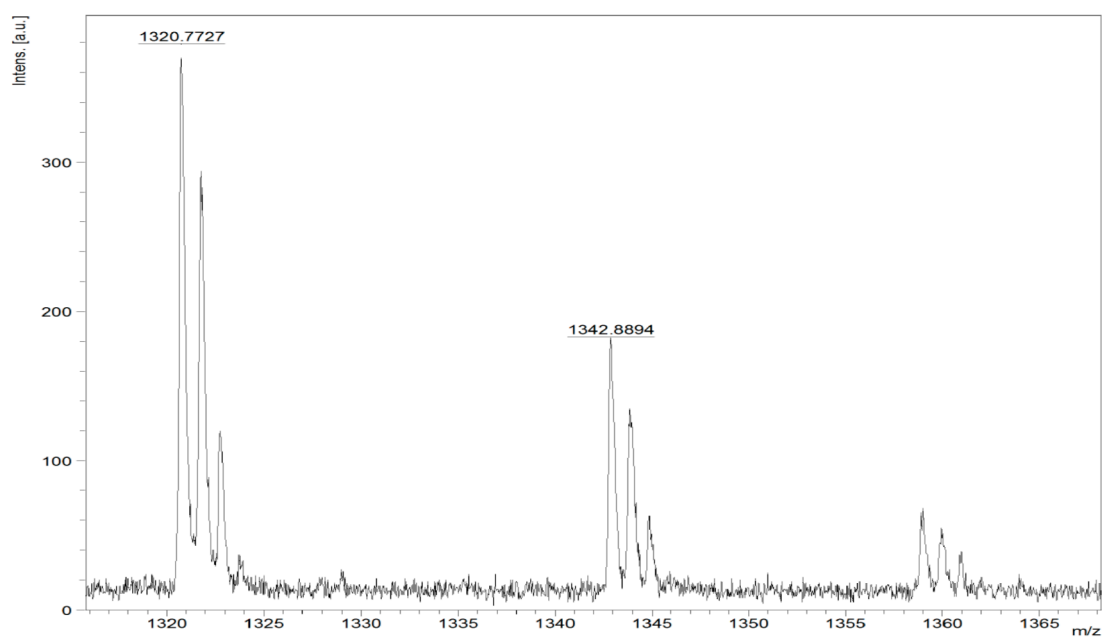
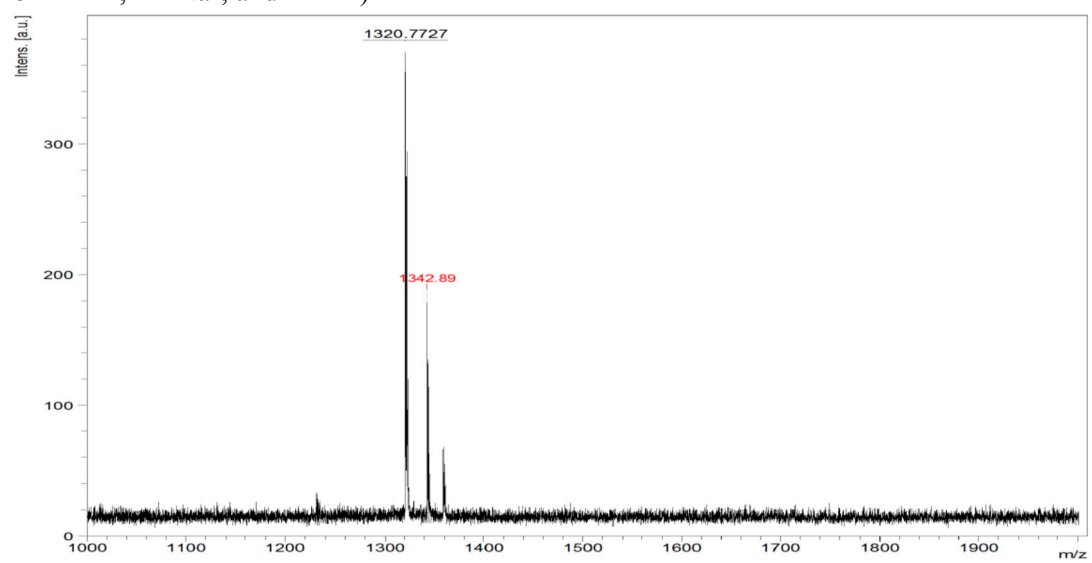


Figure S7: HPLC of analogue **5** (method 10-65% B in 15 min)

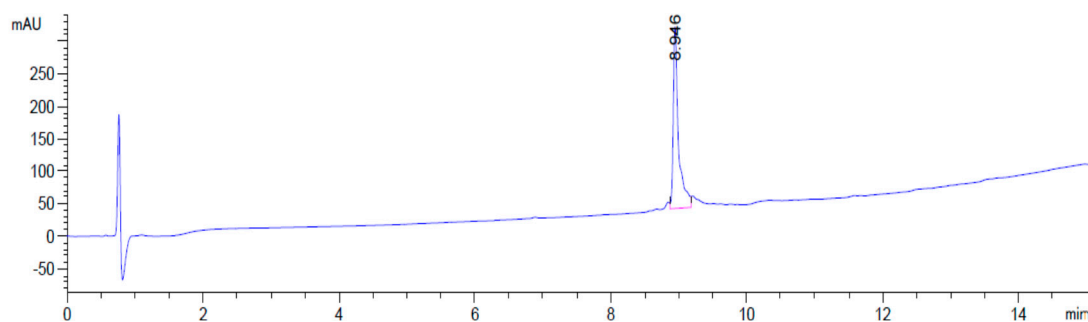


Figure S8: MALDI-TOF spectra of analogue **5** (Expected mass = 1370.7470, observed mass for  $M+H^+$ ,  $M+Na^+$ , and  $M+K^+$ )

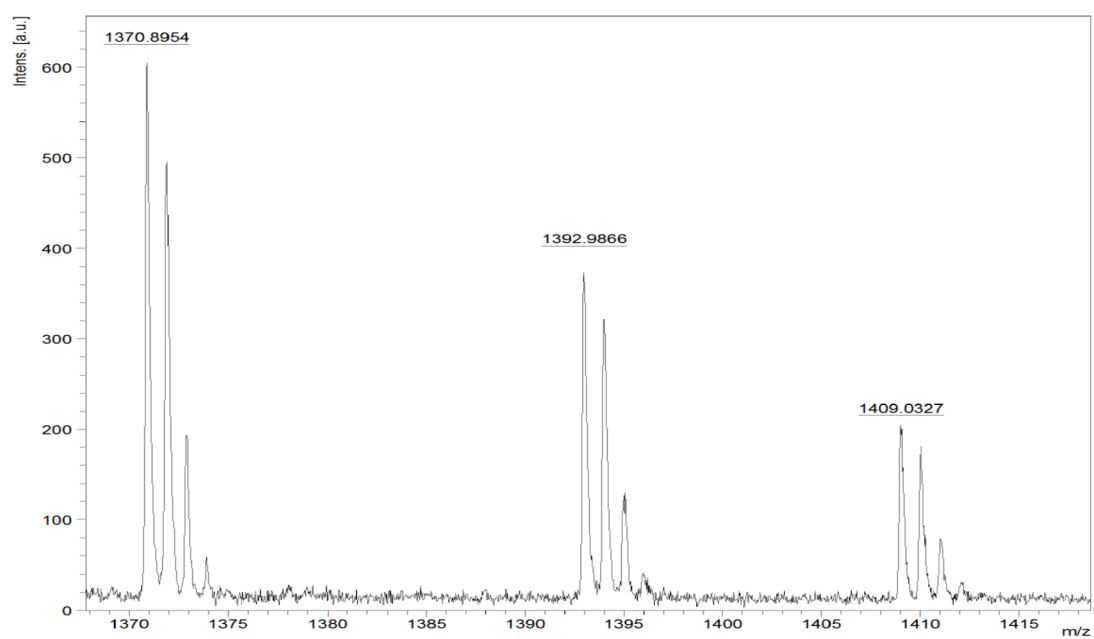
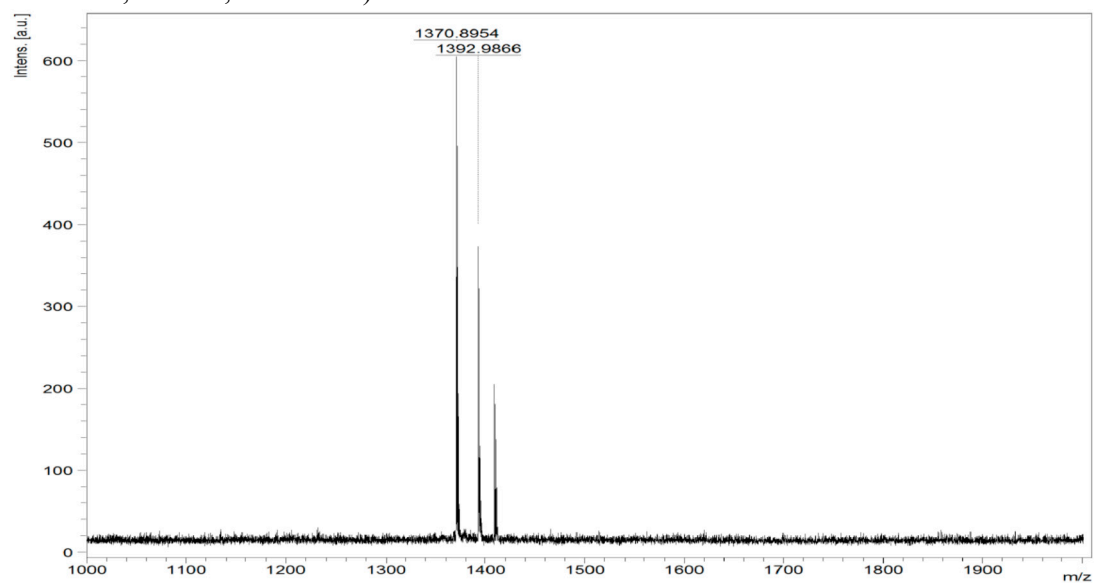


Figure S9: HPLC of analogue **6** (method 10-65% B in 15 min)

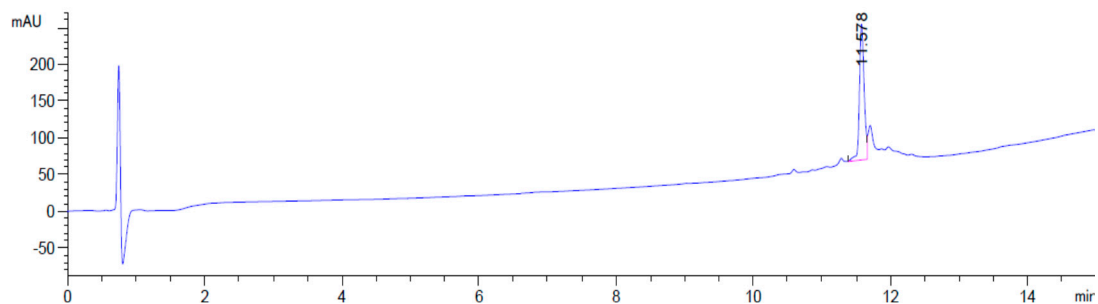


Figure S10: MALDI-TOF spectra of analogue **6** (Expected mass = 1511.0170, observed mass for  $M+H^+$ ,  $M+Na^+$ , and  $M+K^+$ )

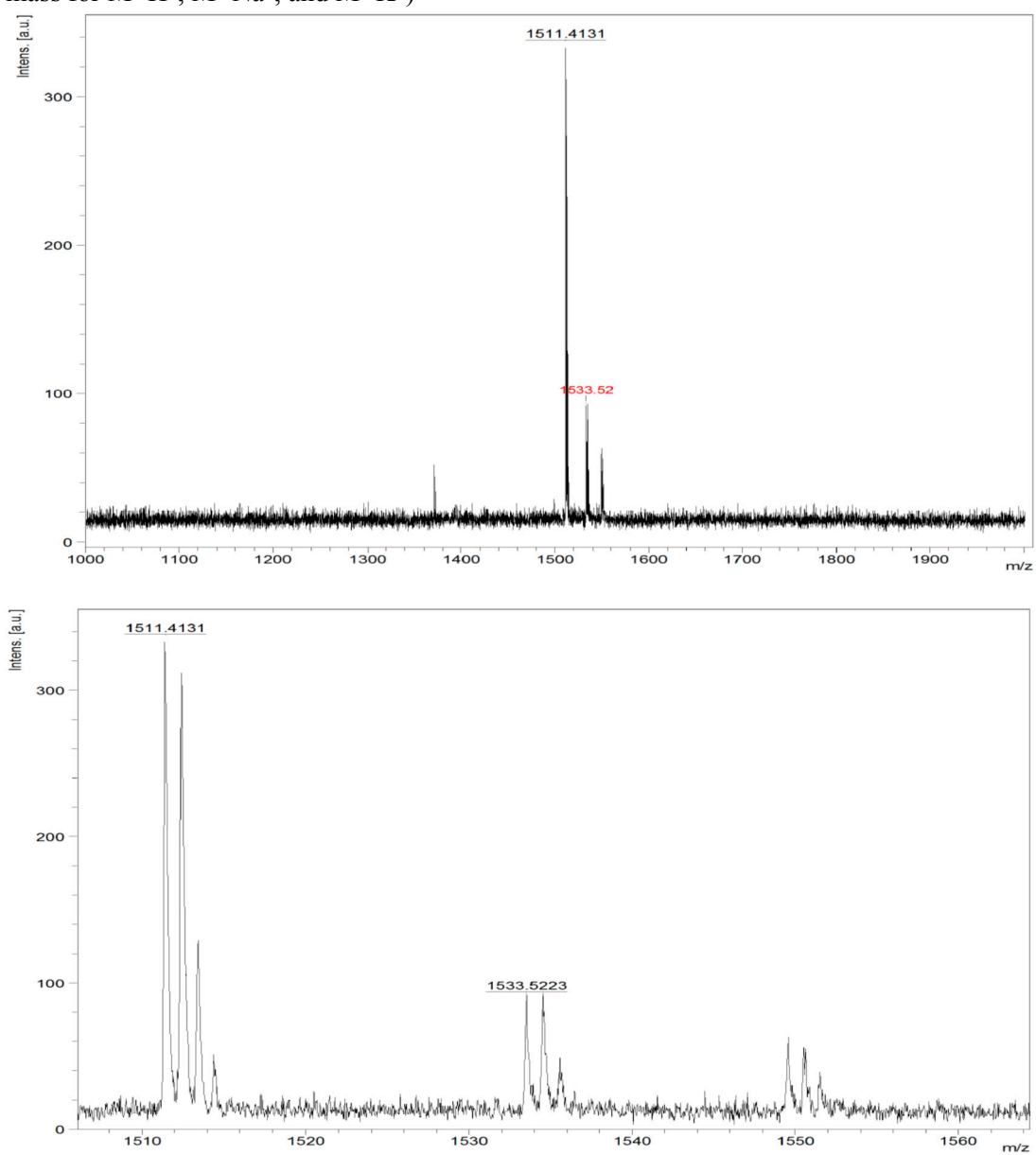


Figure S11: HPLC of analogue **8** (method 45-85% B in 15 min)

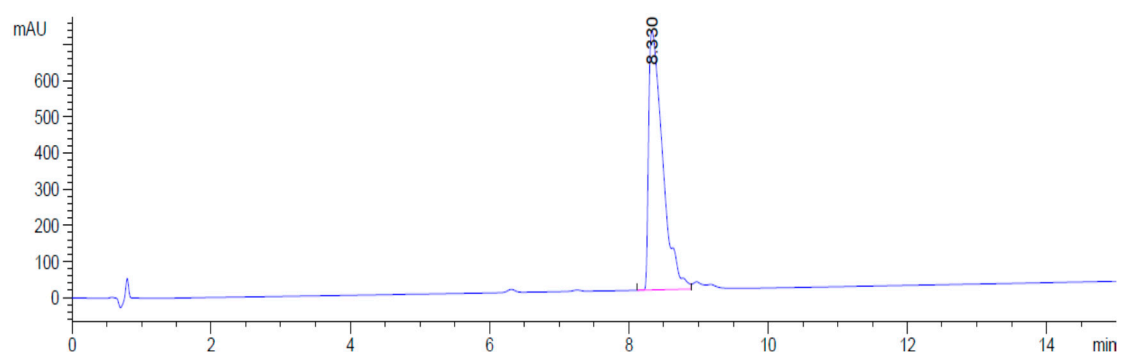


Figure S12: MALDI-TOF spectra of analogue **8** (Expected mass = 1384.7300, observed mass for  $M+H^+$ )

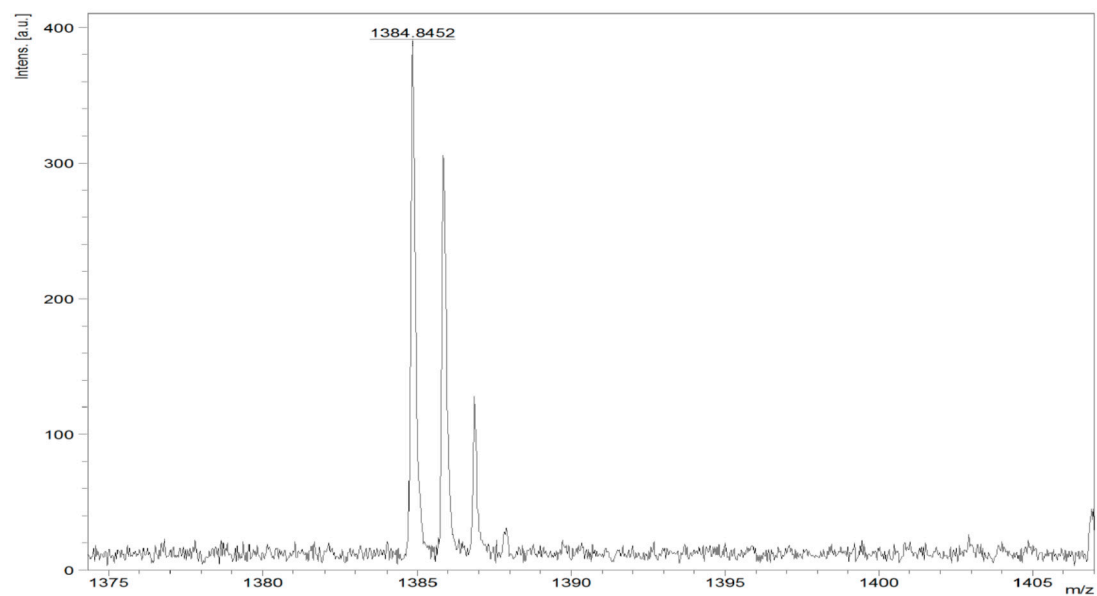
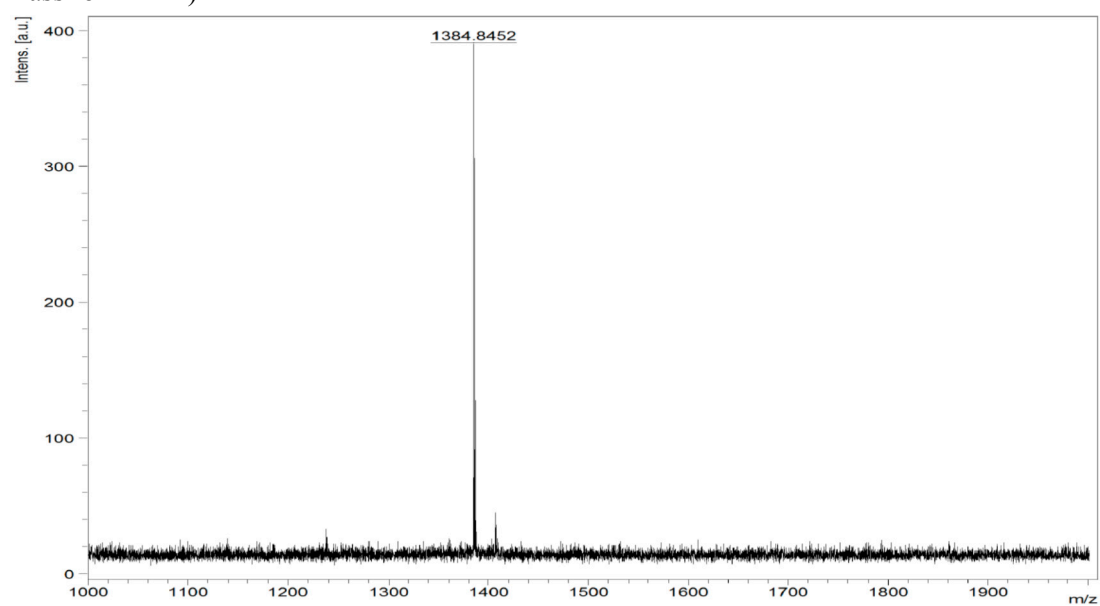


Figure S13: HPLC of analogue **9** (method 30-50% B in 15 min)

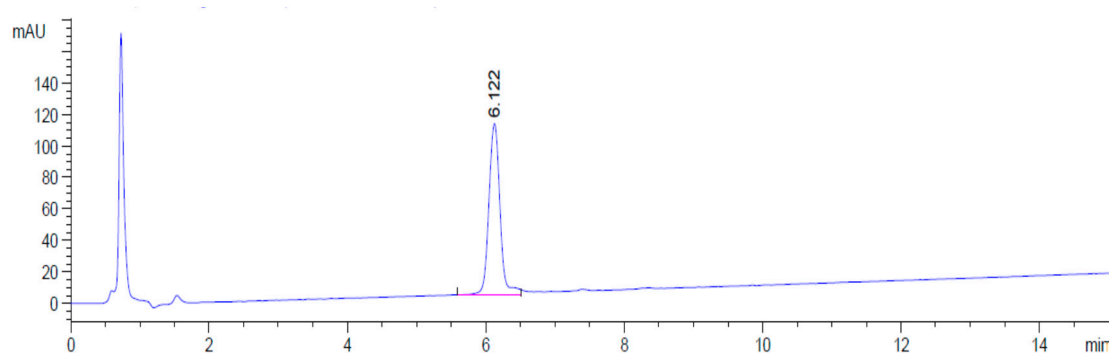


Figure S14: MALDI-TOF spectra of analogue **9** (Expected mass = 1272.5140, observed mass for  $M+H^+$ )

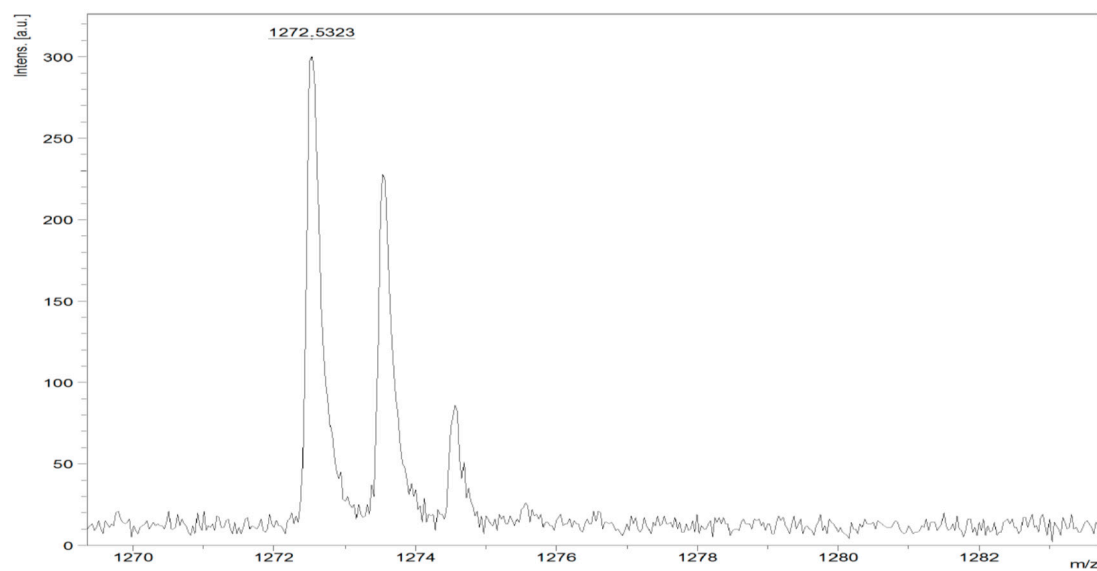
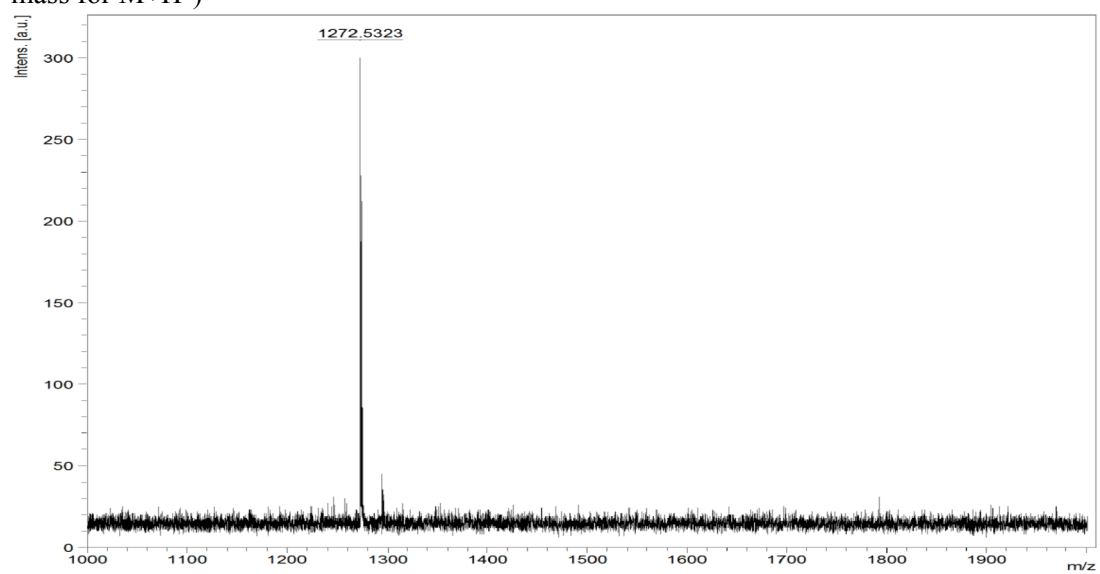




Figure S15: HPLC of analogue **10** (method 30-50% B in 15 min)

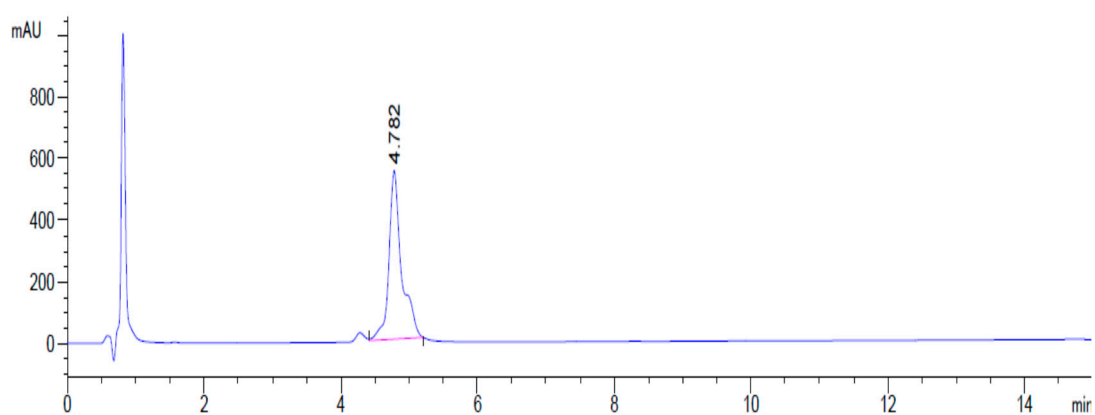


Figure S16: MALDI-TOF spectra of analogue **10** (Expected mass = 1328.6260, observed mass for  $M+H^+$ ,  $M+Na^+$ , and  $M+K^+$ )

