

Supplementary information

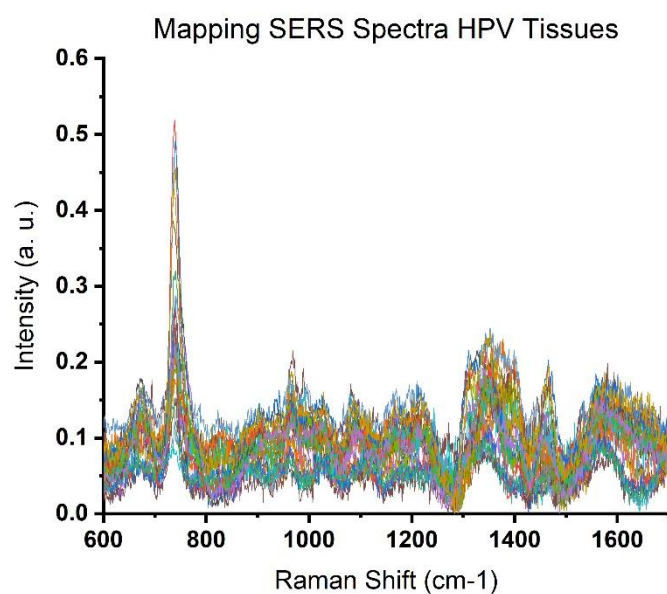


Figure S1 SERS spectra of HPV infected tissues mapping (n=30), analysed at a wavelength of 785 nm.

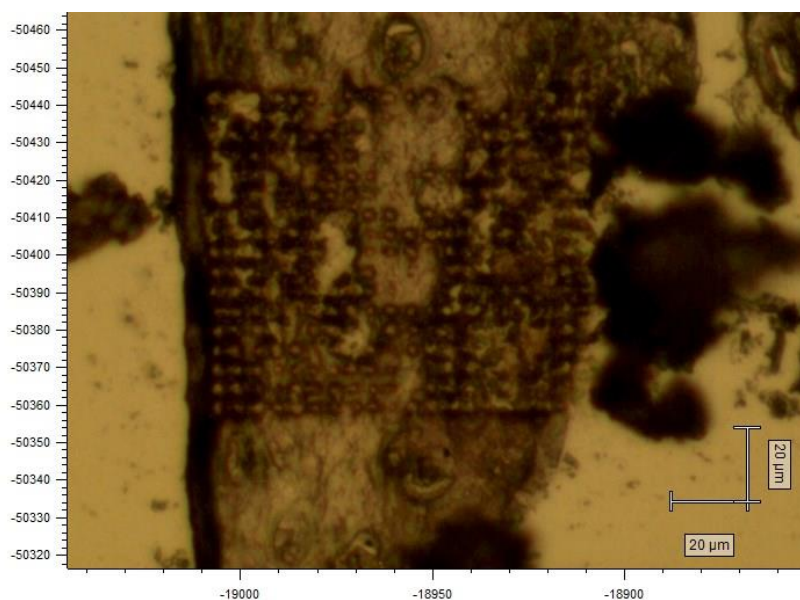


Figure S2 Micrography of an HPV infected tissue after the mapping raman análisis.

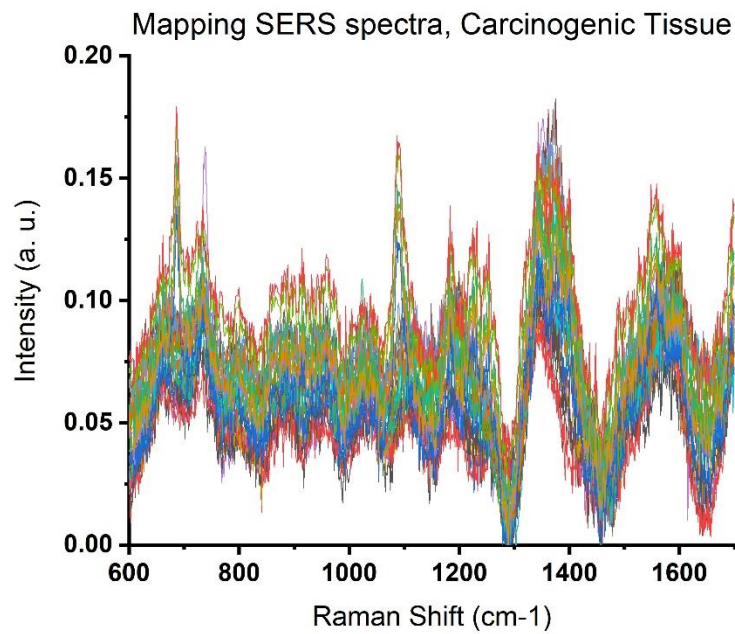


Figure S3 SERS spectra of Carcinogenic tissues mapping (n=30), analysed at a wavelength of 785 nm.

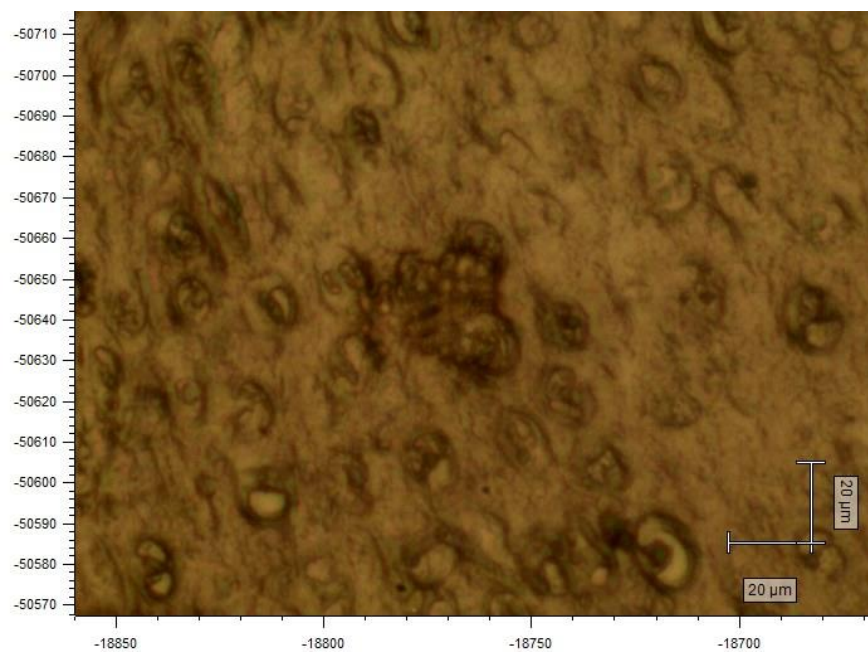


Figure S4 Micrography of a carcinogenic tissue after the mapping raman análisis.