

Supplementary Information

Chemical profile, antioxidant capacity and antimicrobial activity of essential oils extracted from three different varieties (Moldoveanca 4, Vis Magic and Alba 7) of *Lavandula angustifolia*

Mihaela Bogdan¹, Simona Bungau^{1,2*}, Delia Mirela Tit^{1,2}, Dana Carmen Zaha^{3,4}, Aurelia Cristina Nechifor⁵, Tapan Behl⁶, Dorina Chambre^{7,8}, Andreea Ioana Lupitu⁸, Lucian Copolovici^{7,8} and Dana Maria Copolovici^{7,8}

The calibration curves calculated for Trolox used in ABTS and DPPH assays, respectively are presented in Figures S1 and S2.

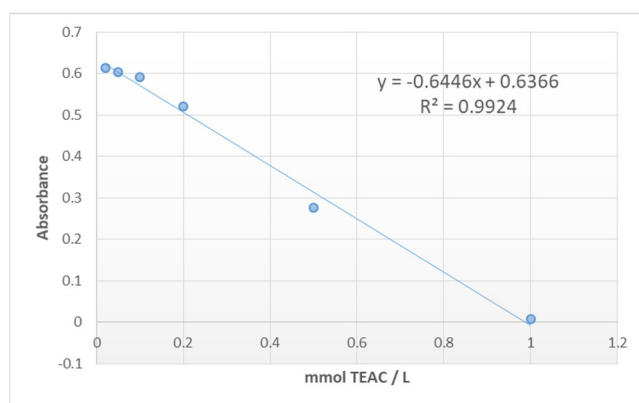


Figure S1. Calibration curve for ABTS assay performed with Trolox solutions with different concentrations (0.025 mM-1.0 mM).

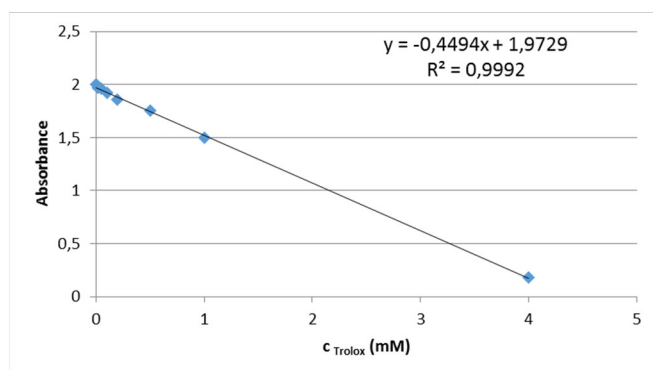


Figure S2. Calibration curve for DPPH assay performed with Trolox solutions with different concentrations (0.02 mM-4.0 mM).