

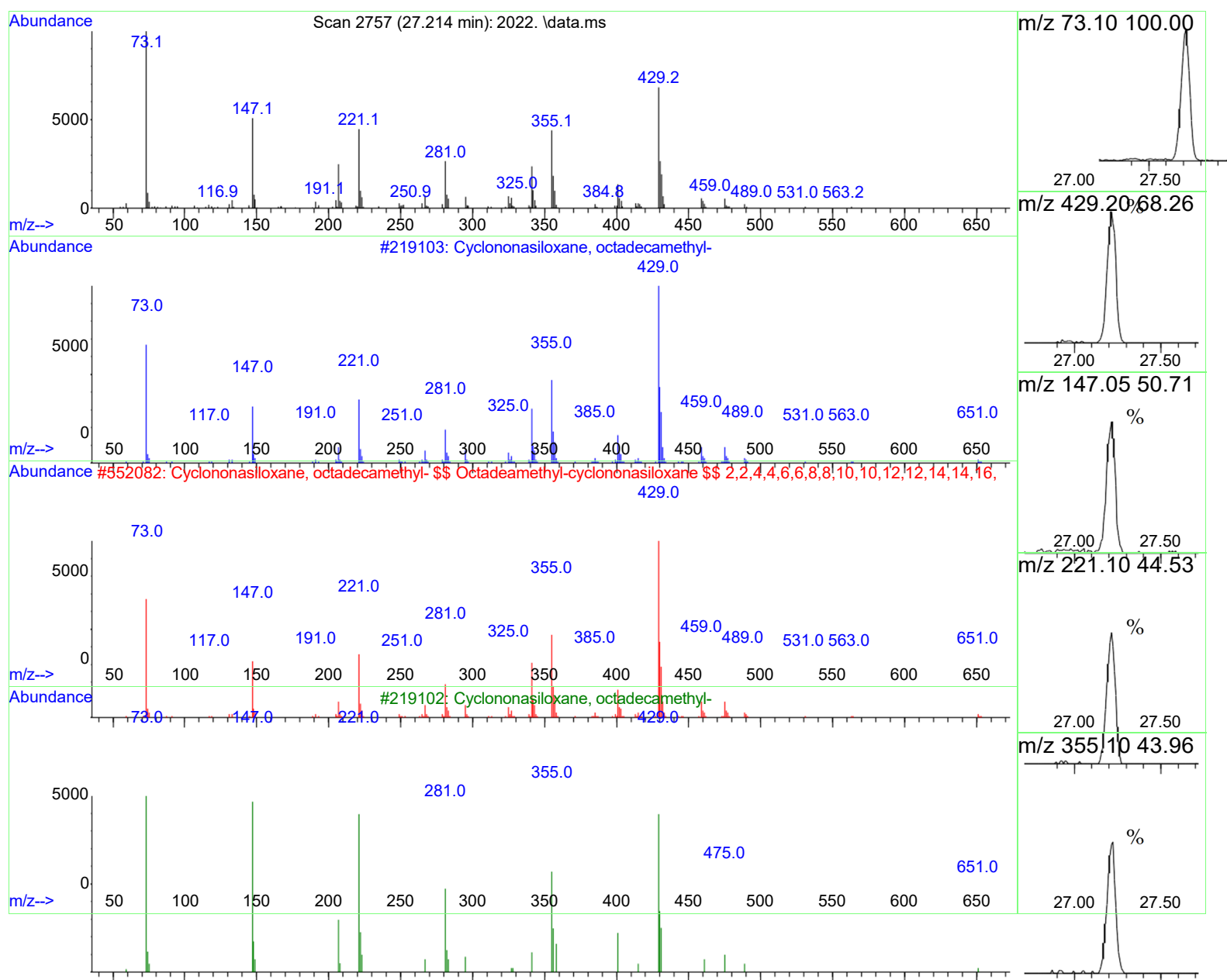
Optimization method for phenolic compounds extraction from medicinal plant (*Juniperus procera*) and phytochemicals screening

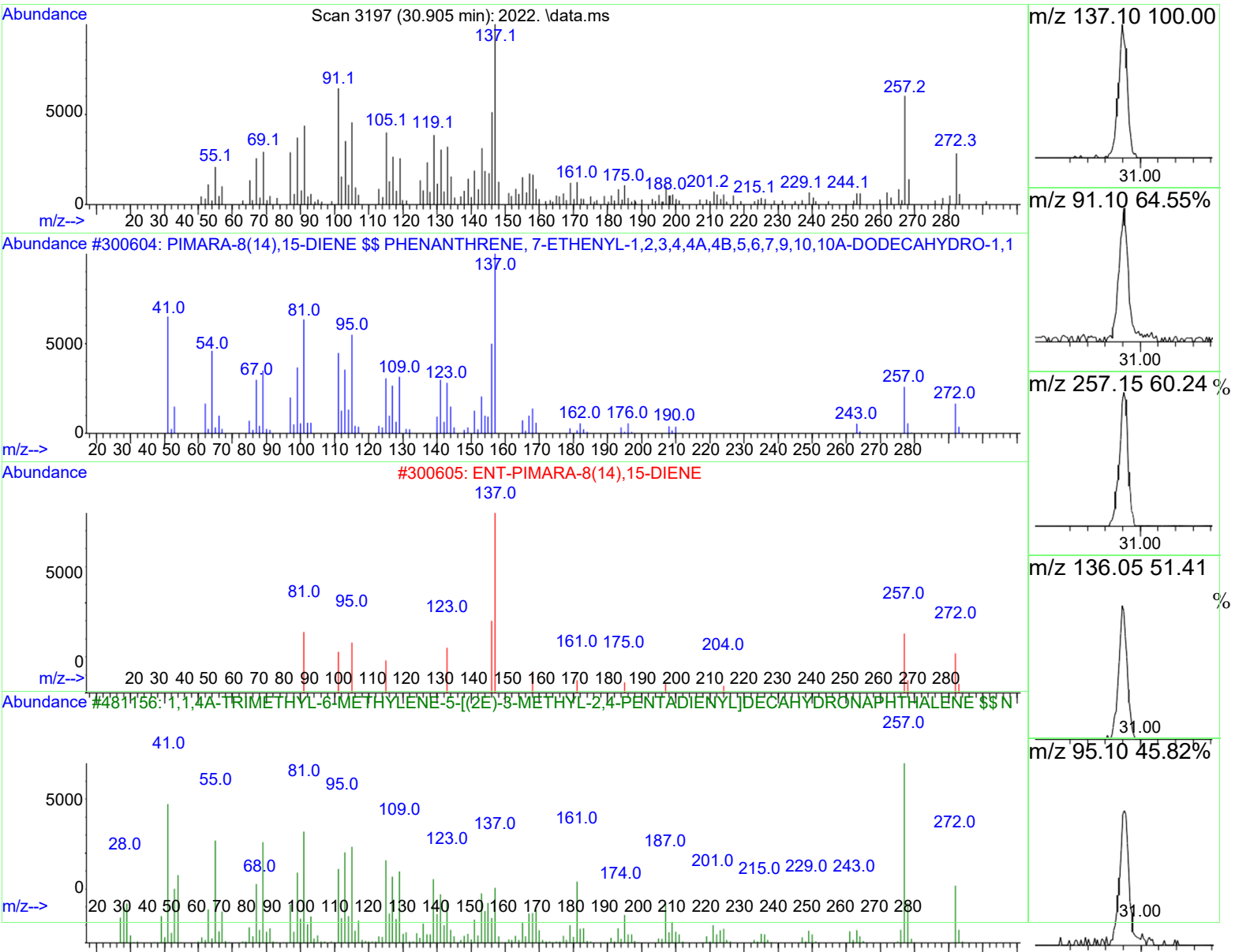
Abdalrhman M. Salih^{1*}, Fahad Al-Qurainy¹, Mohammad Nadeem¹, Mohamed Tarroum¹, Salim Khan¹ Hassan O. Shaikhaldein¹, Abdulrahman Al-hashimi¹, and Alanoud Alfagham¹ & Jawaher Alkahtani¹

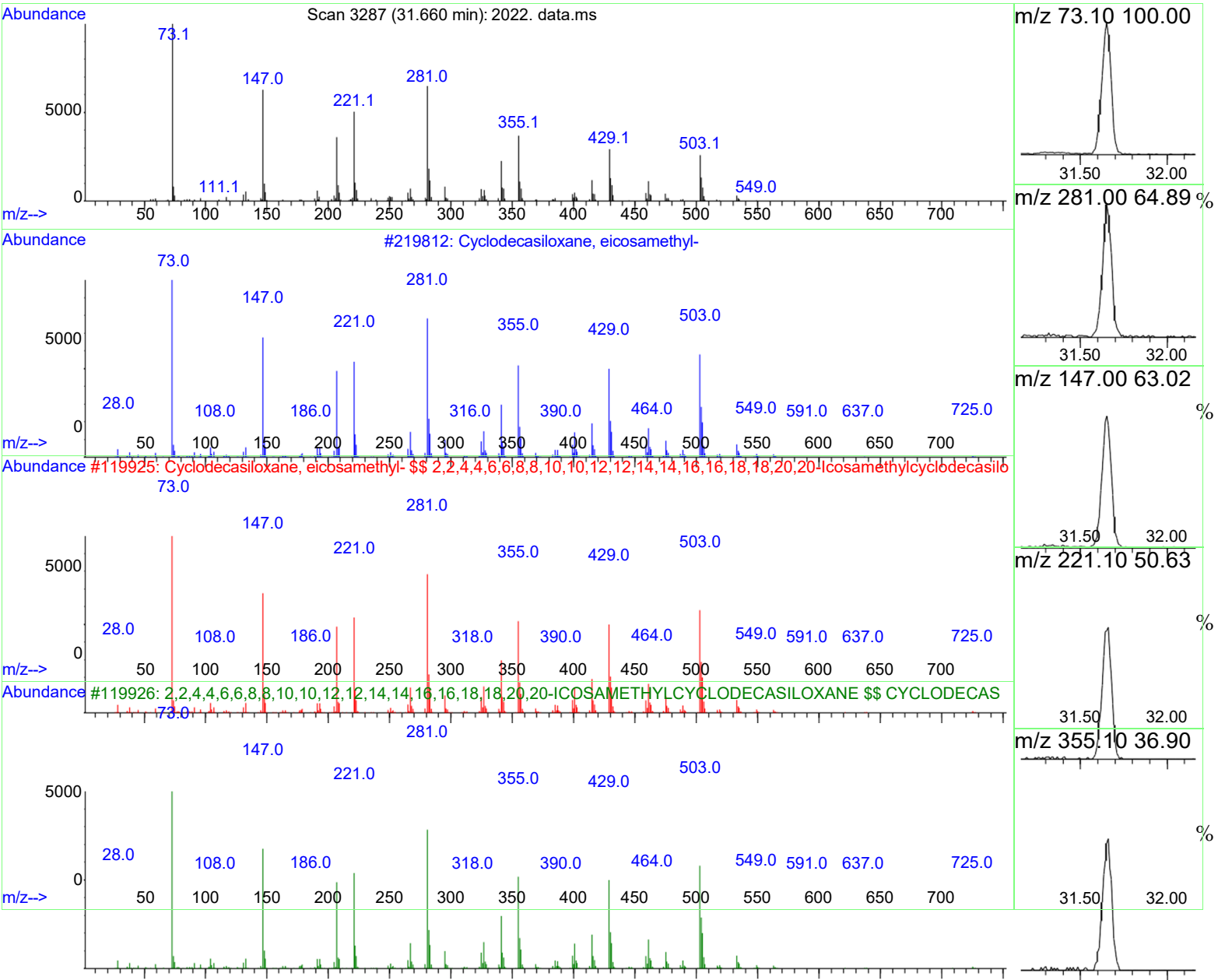
¹ Botany and Microbiology Department, College of Science King Saud University, P. O. BOX 2455, Riyadh 11451, Saudi Arabia

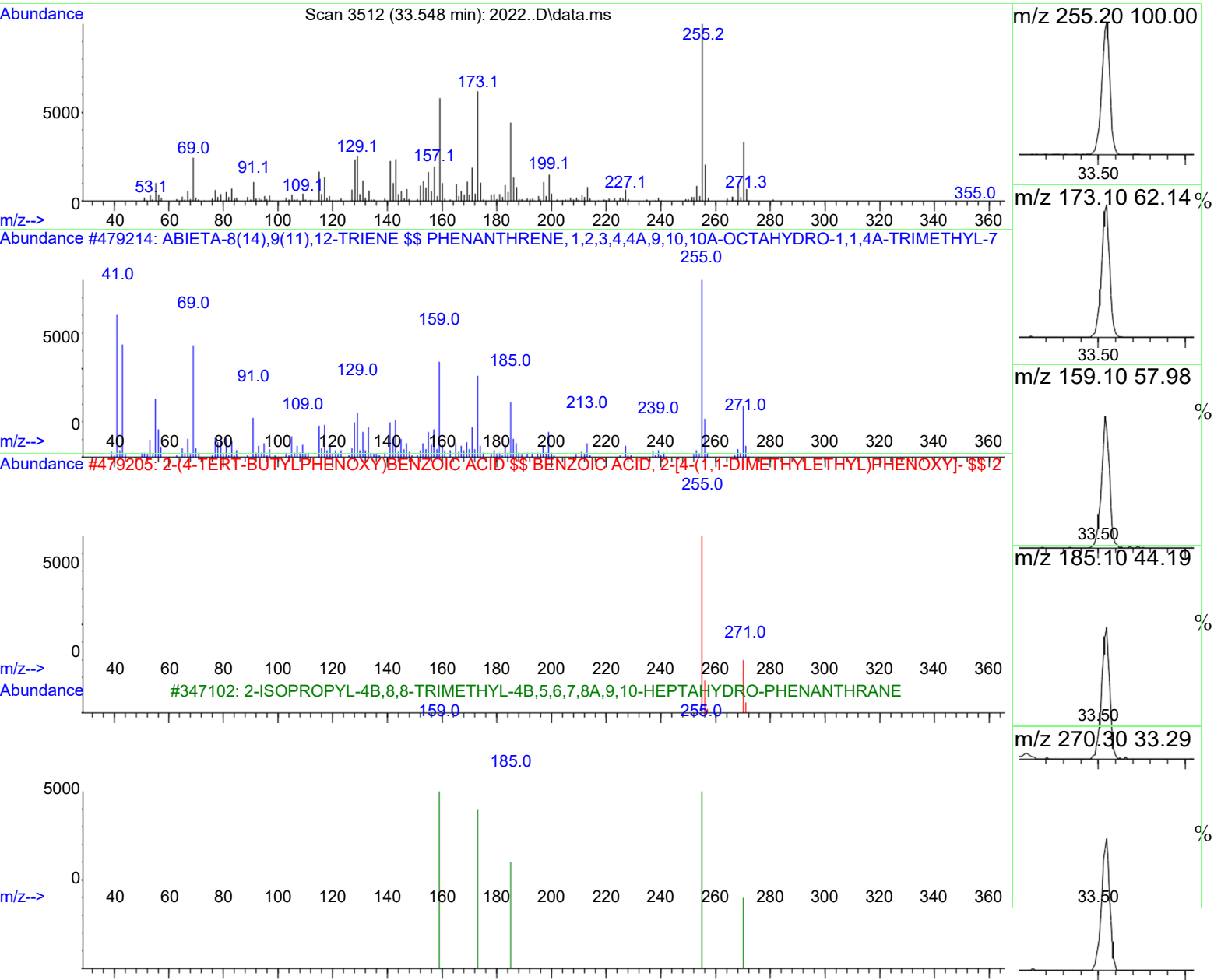
* Correspondence: abdalrahmanm@gmail.com

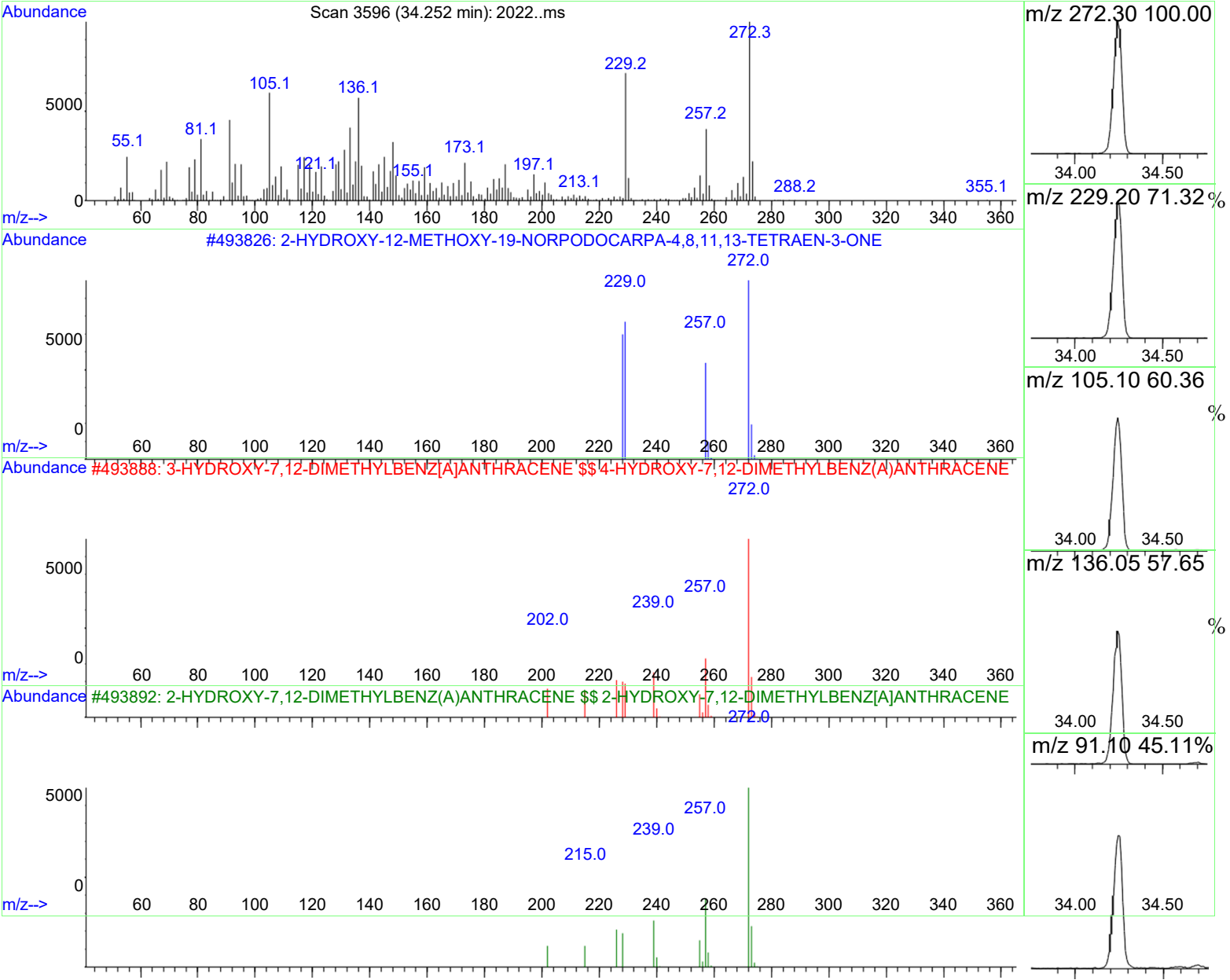
Abdalrhman M. Salih has contributed significantly to this work

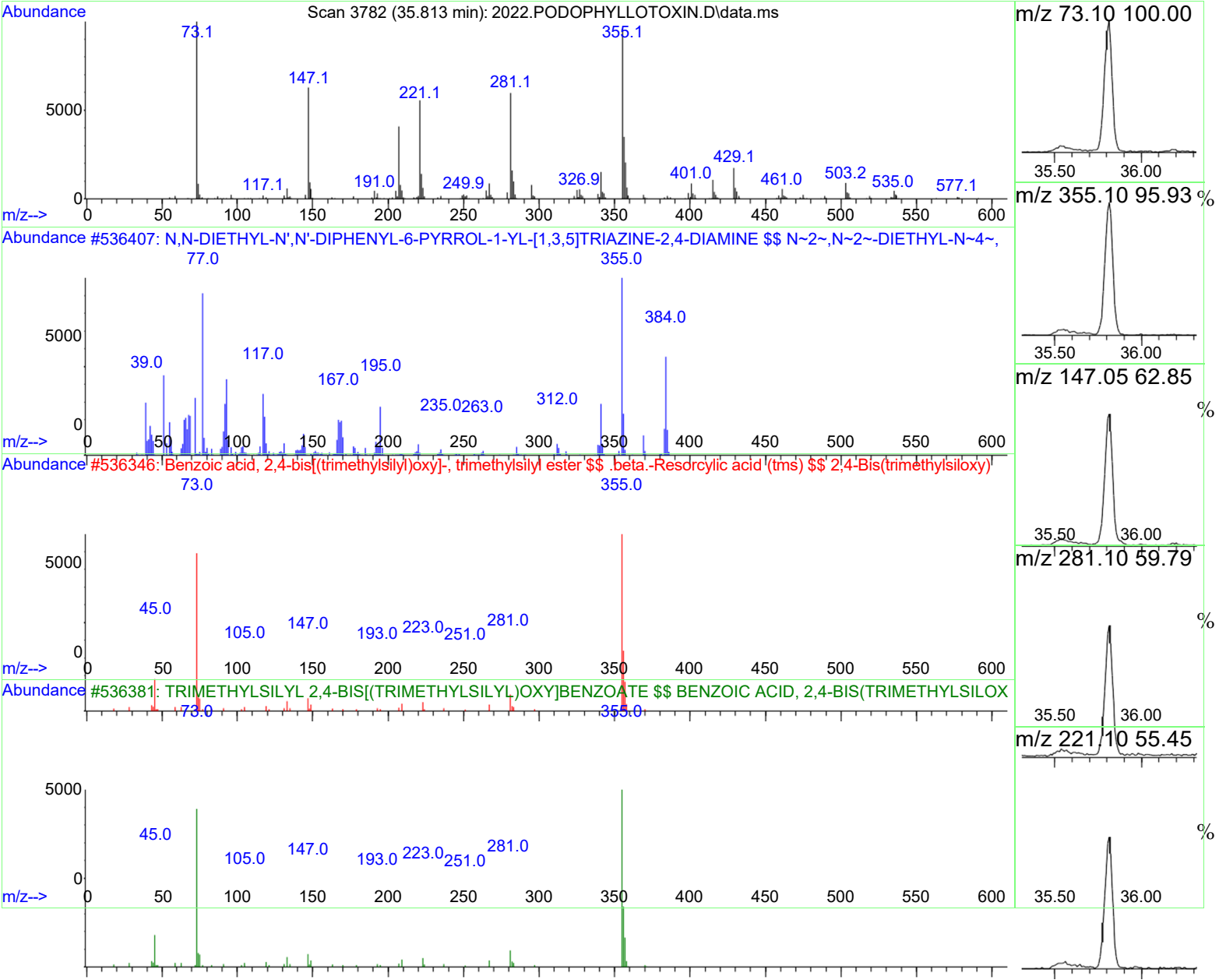


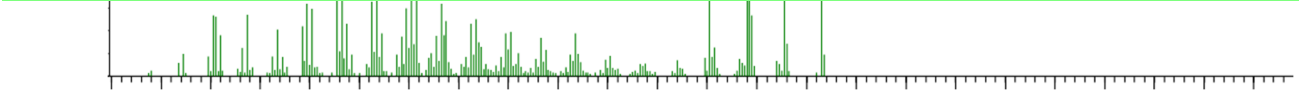
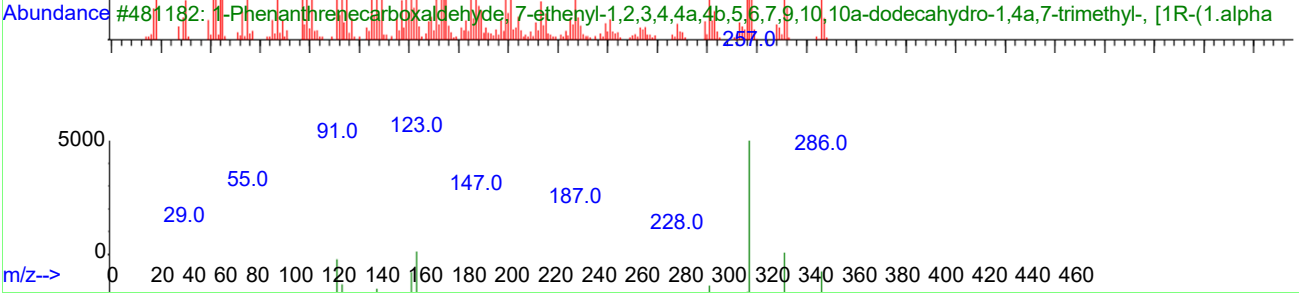
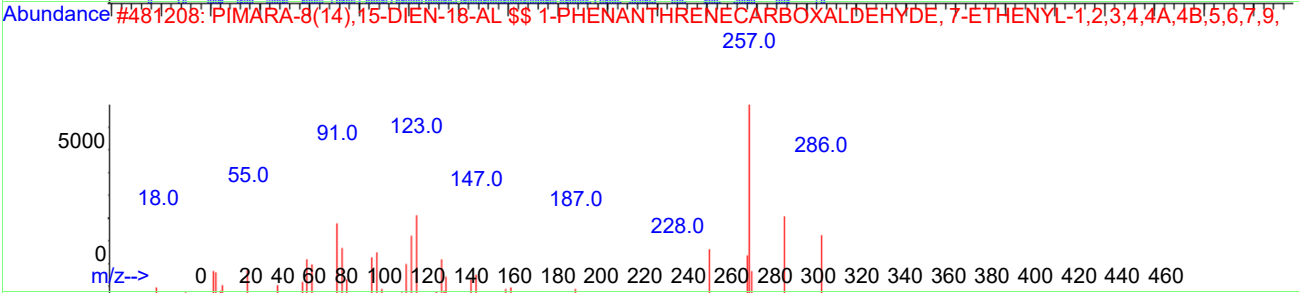
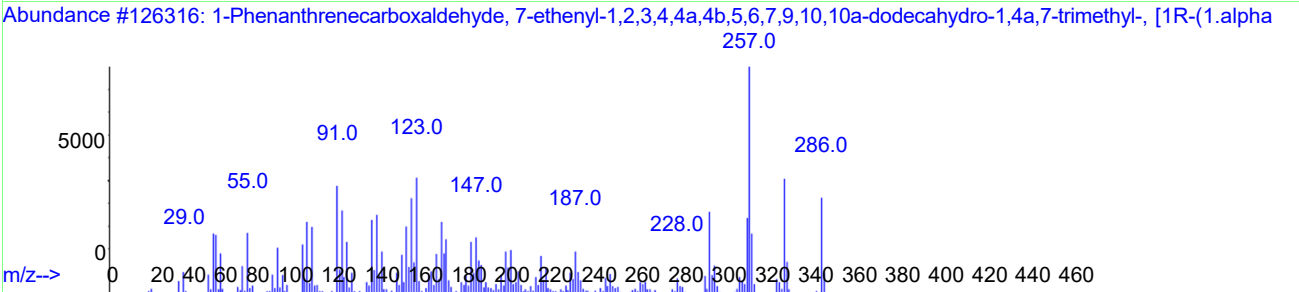
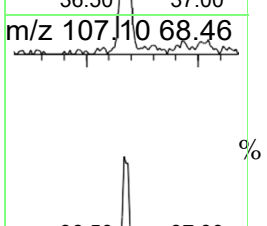
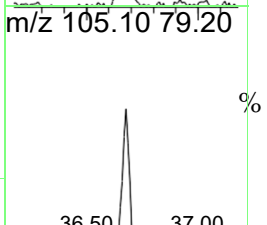
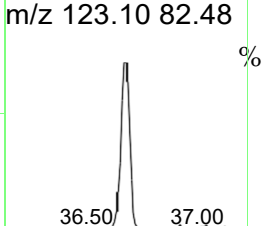
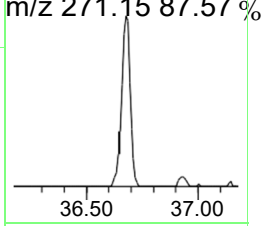
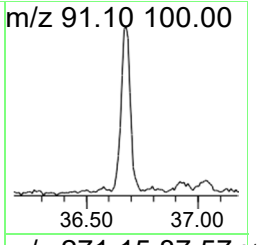
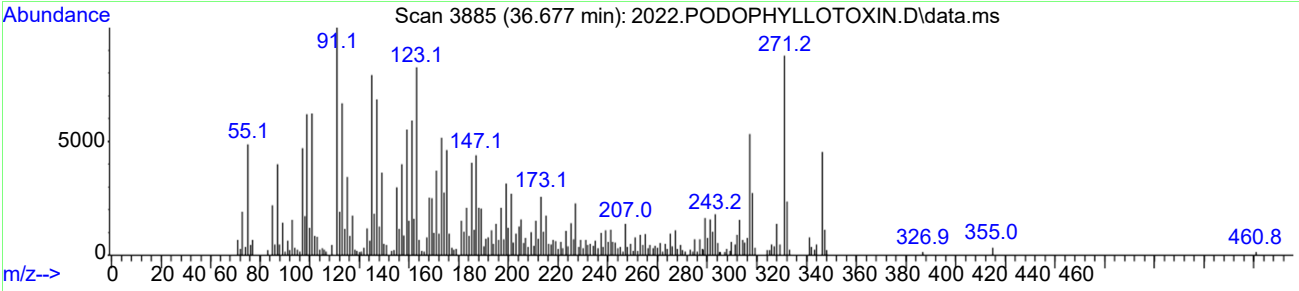


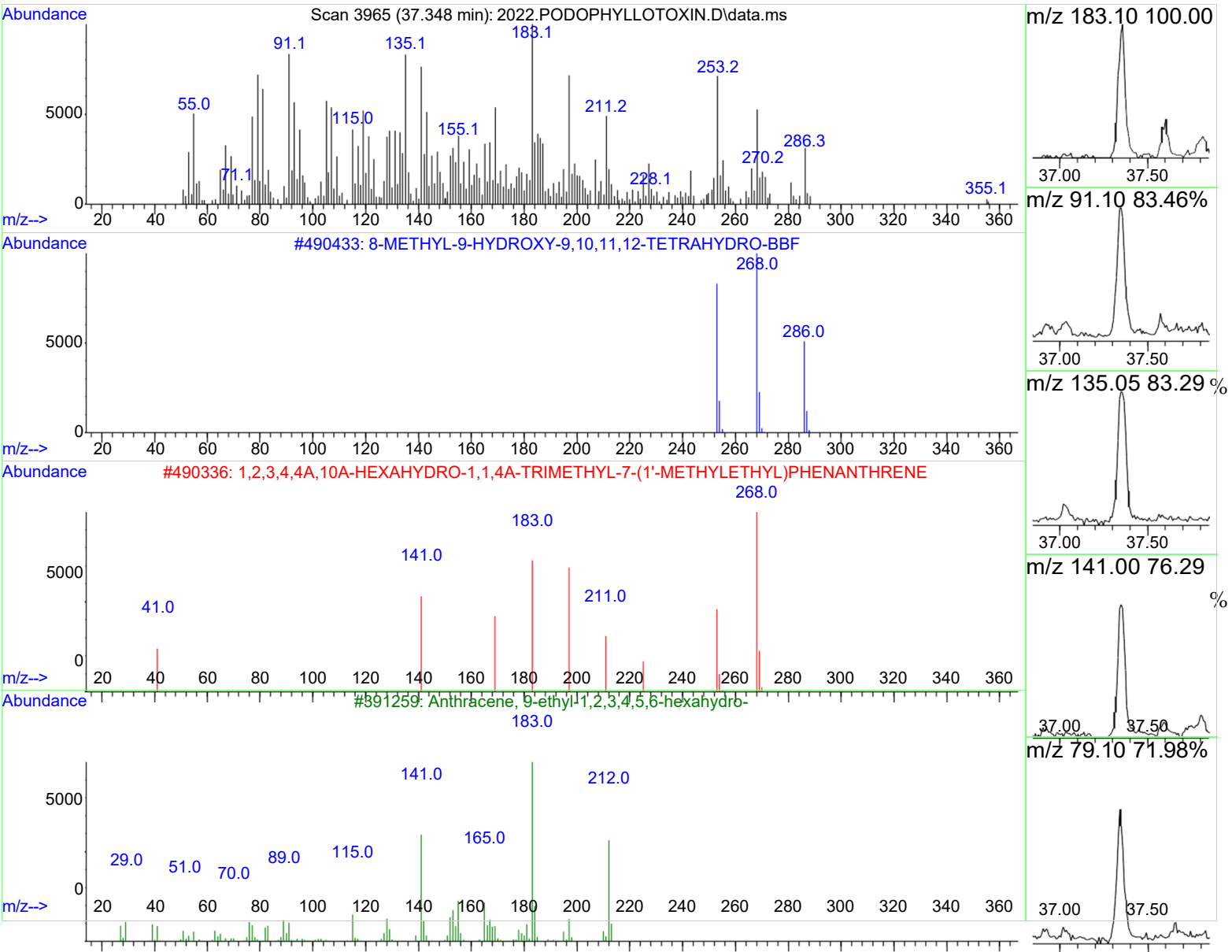


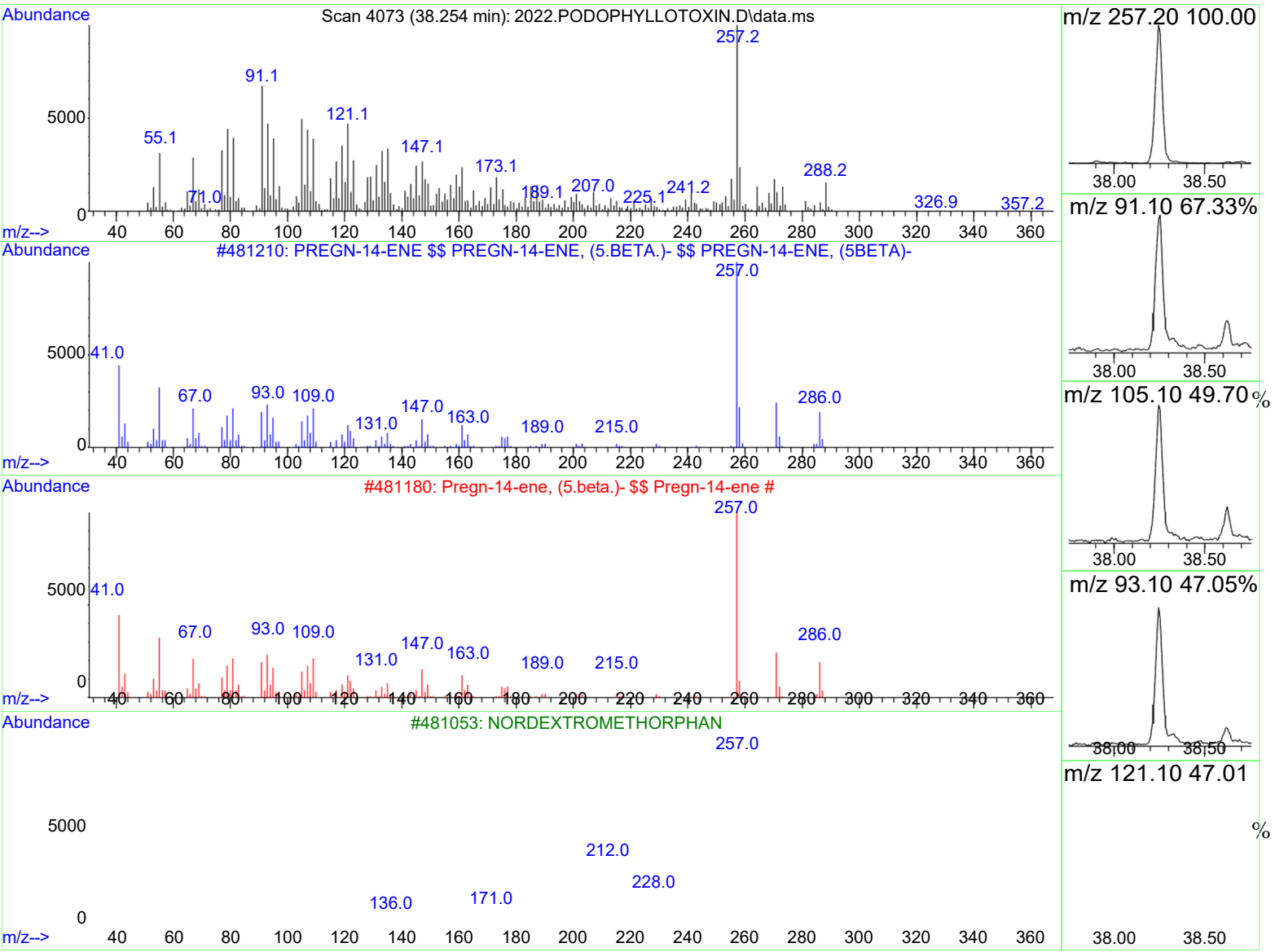


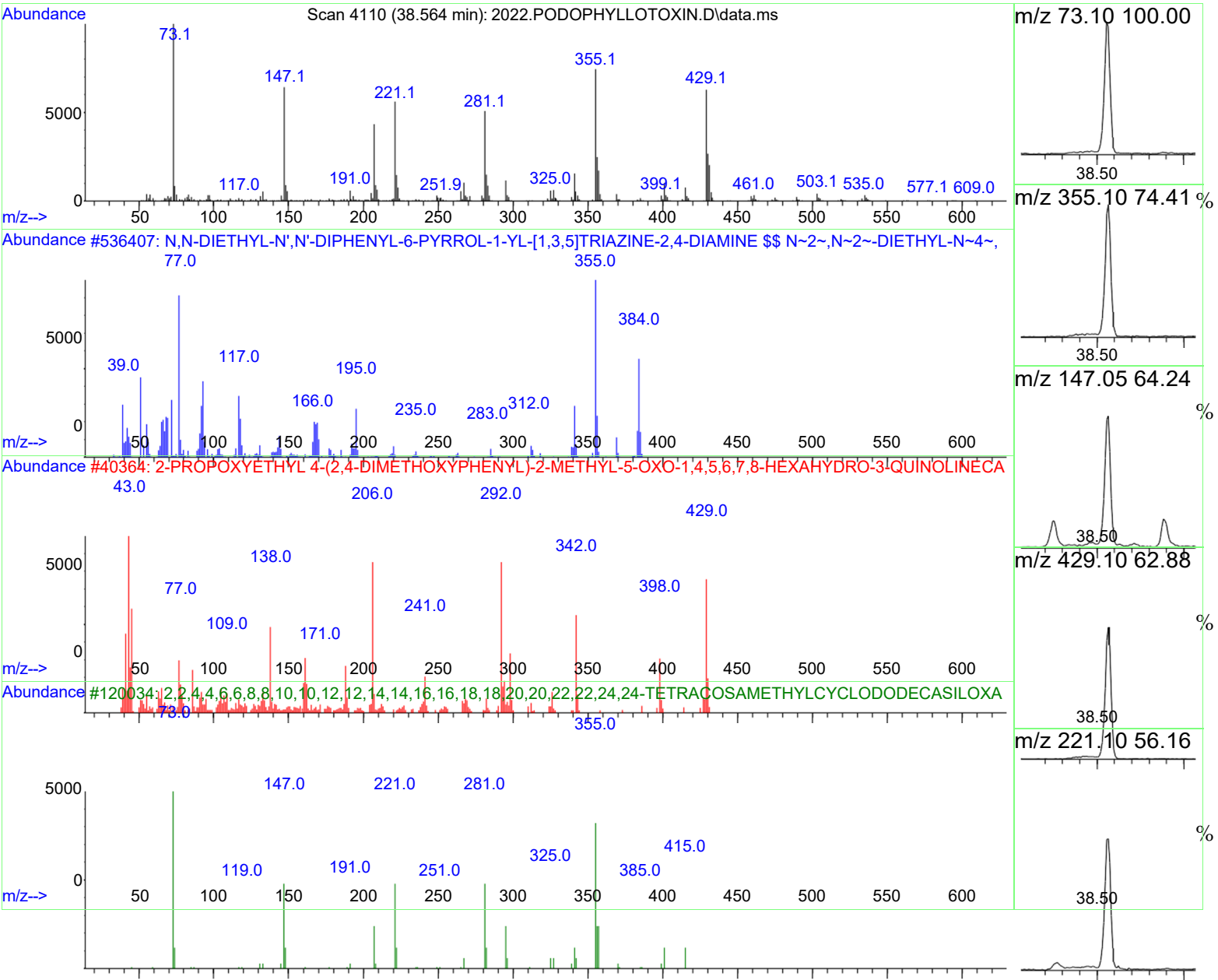


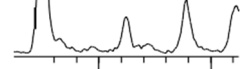
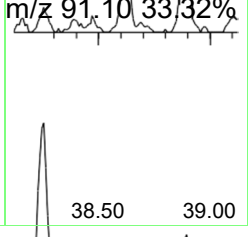
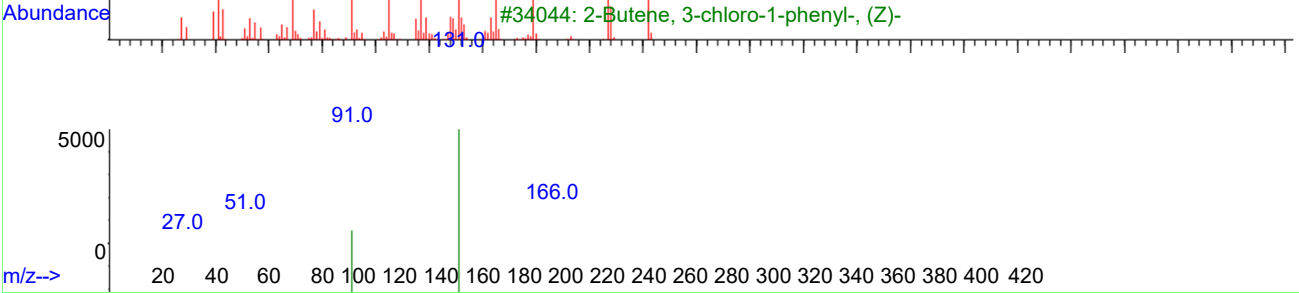
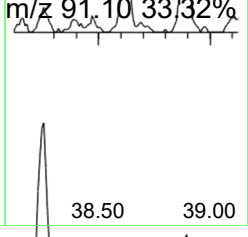
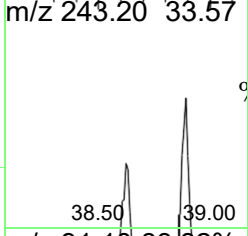
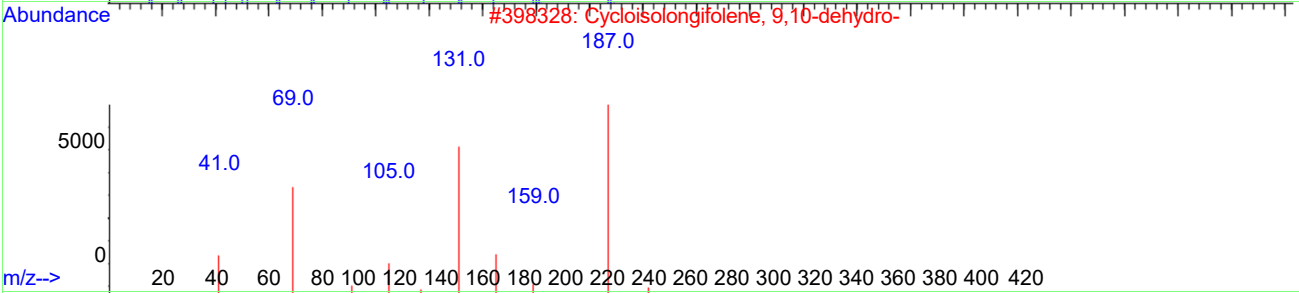
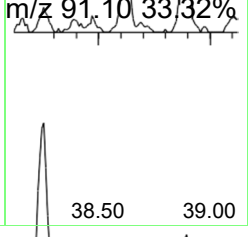
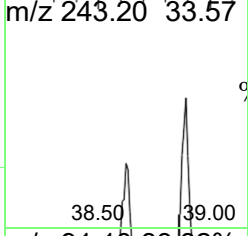
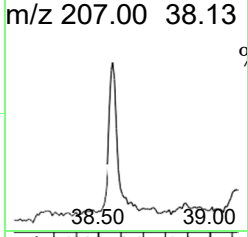
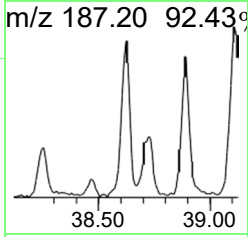
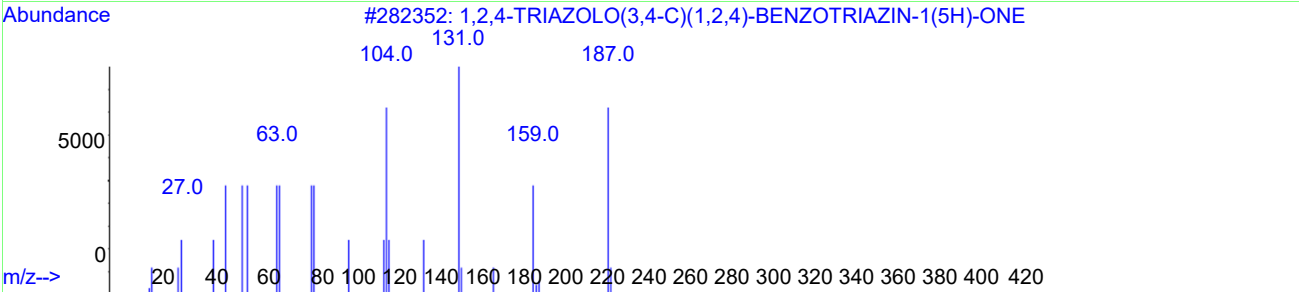
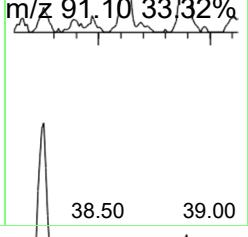
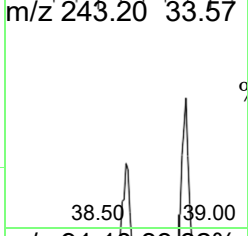
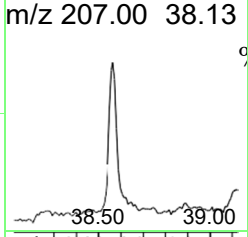
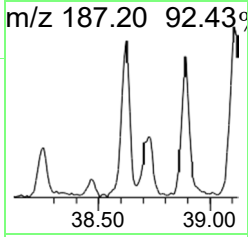
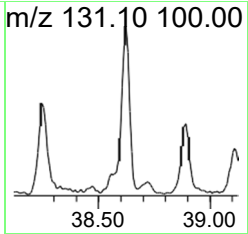
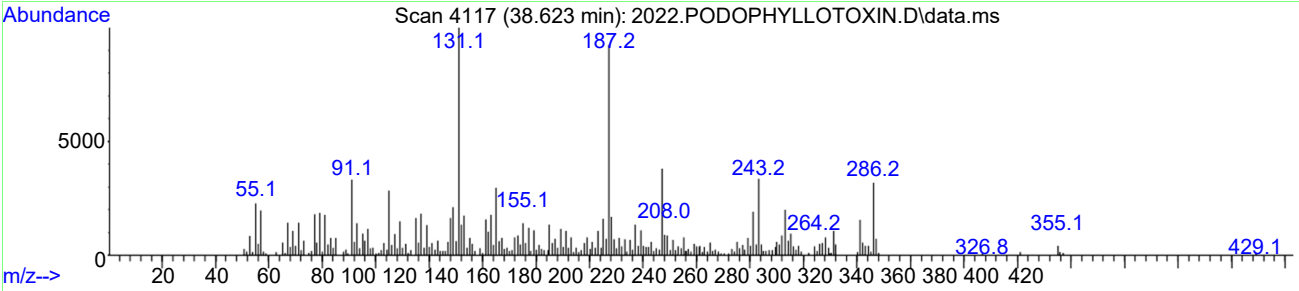


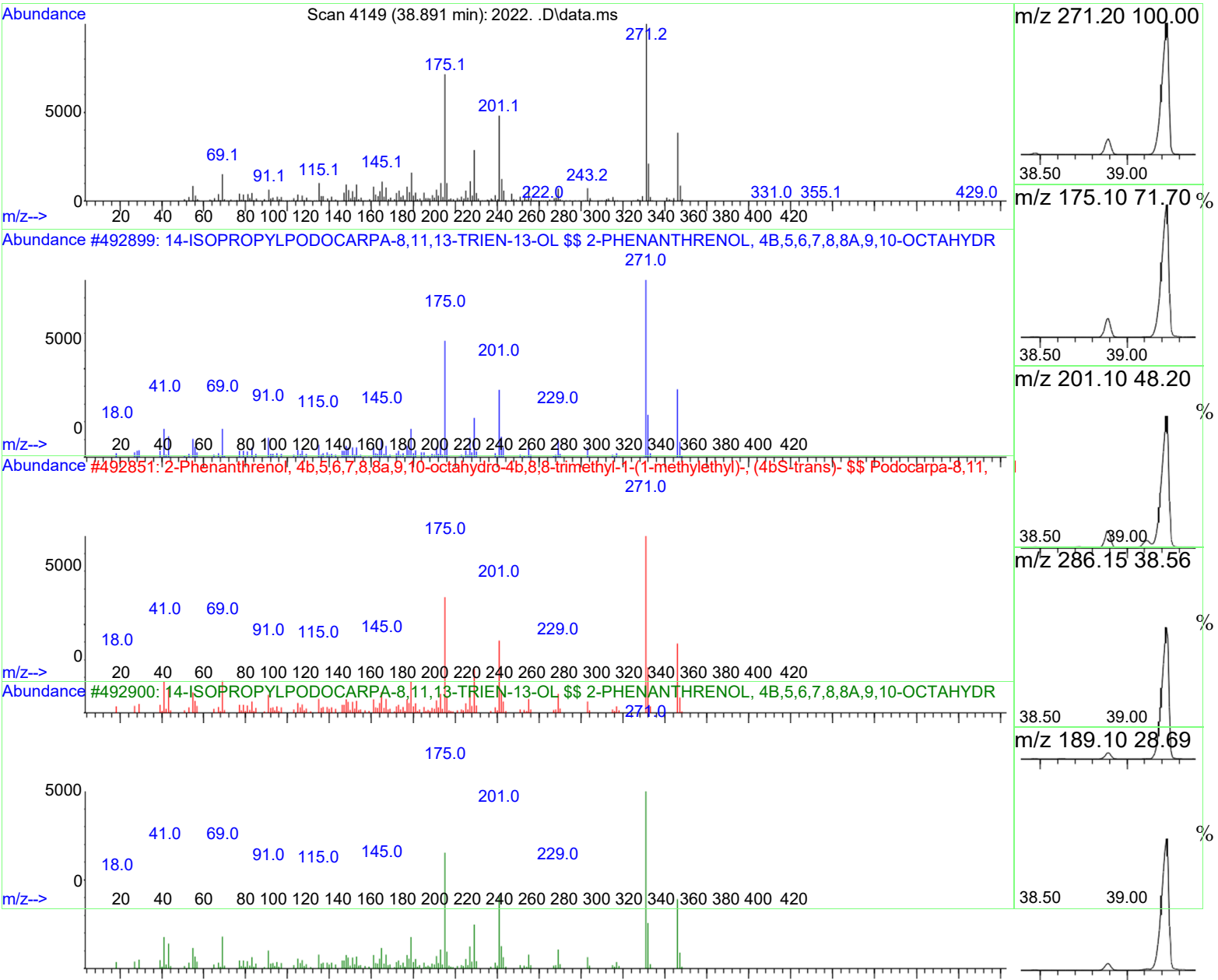


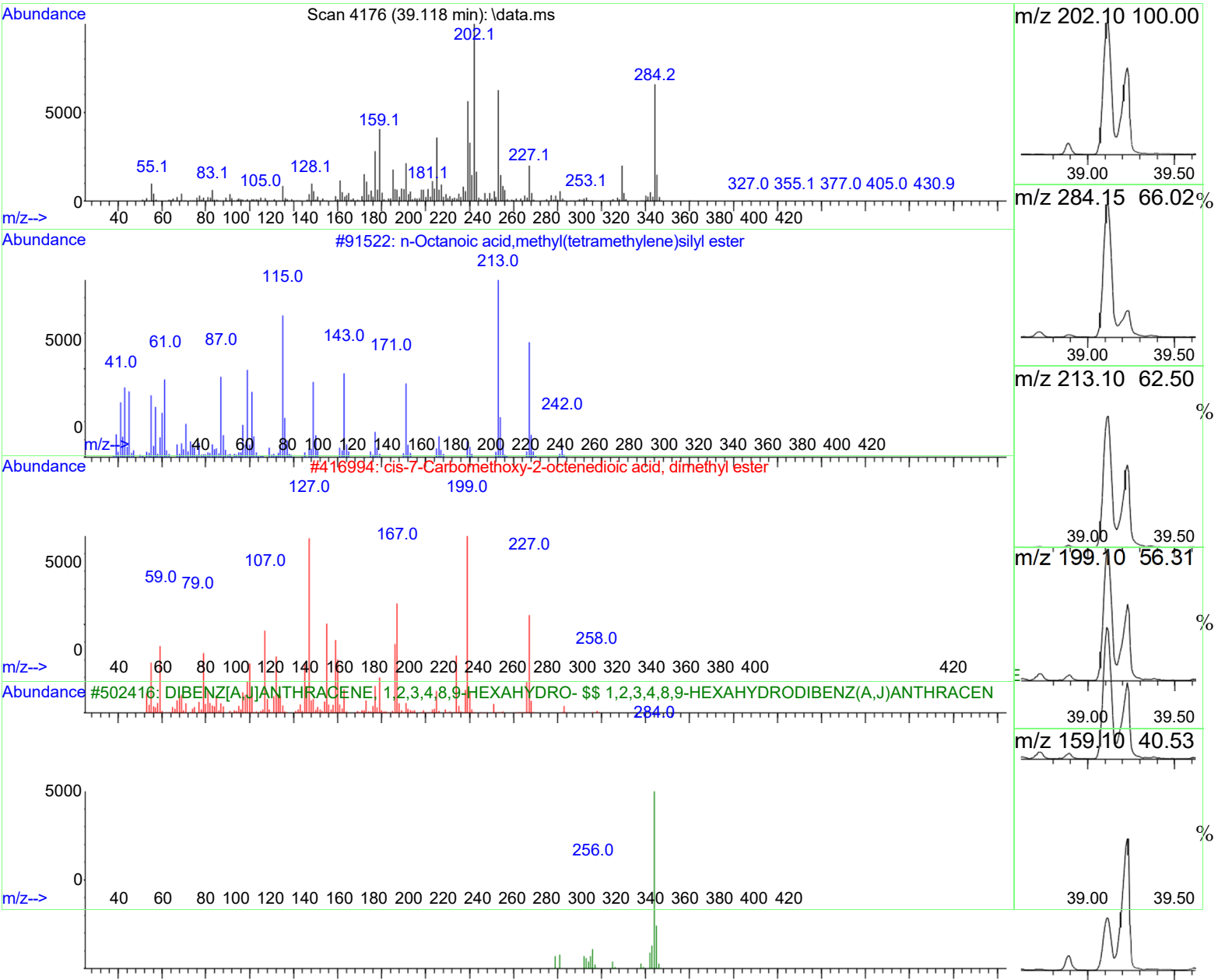


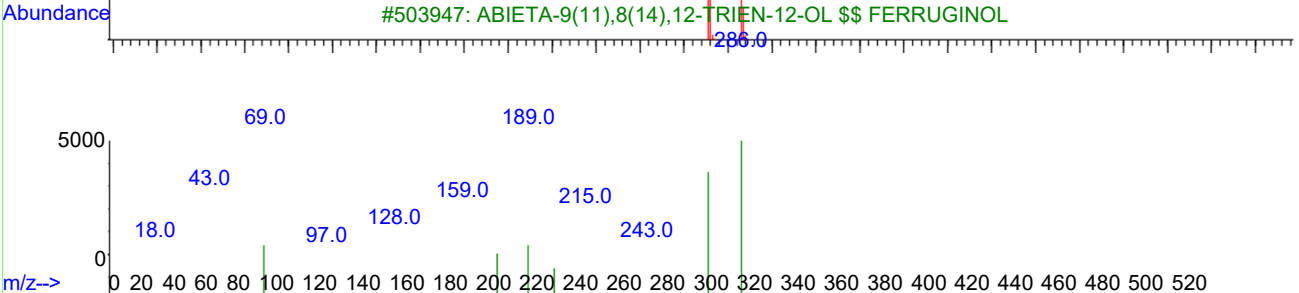
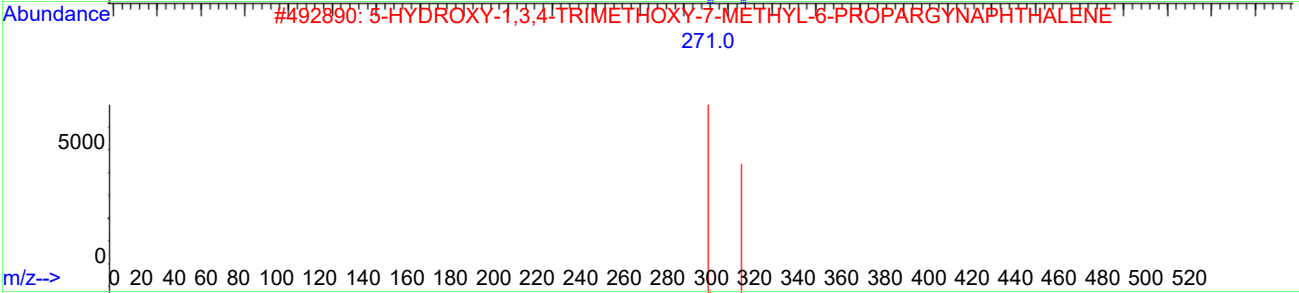
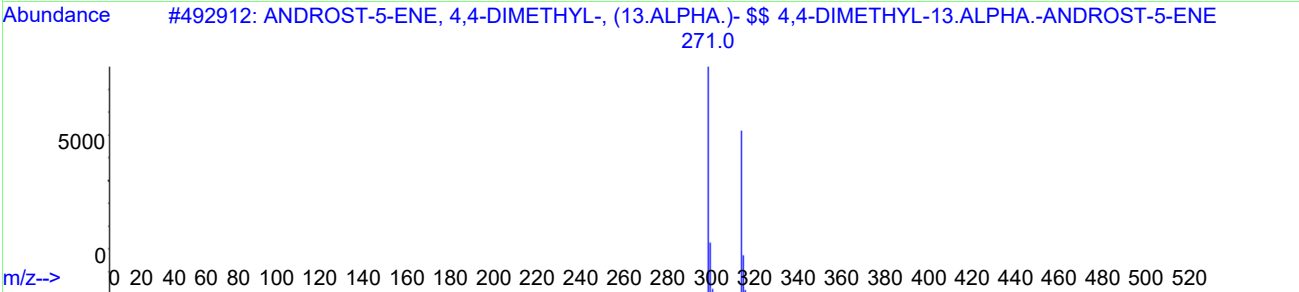
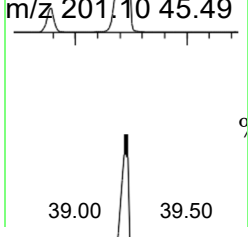
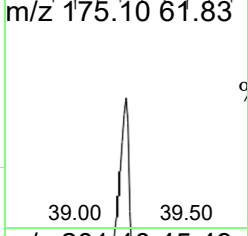
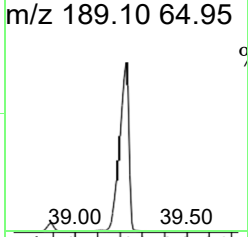
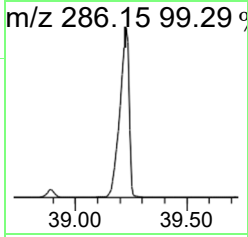
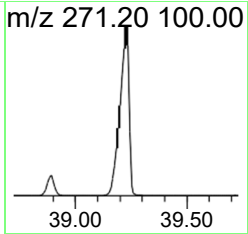
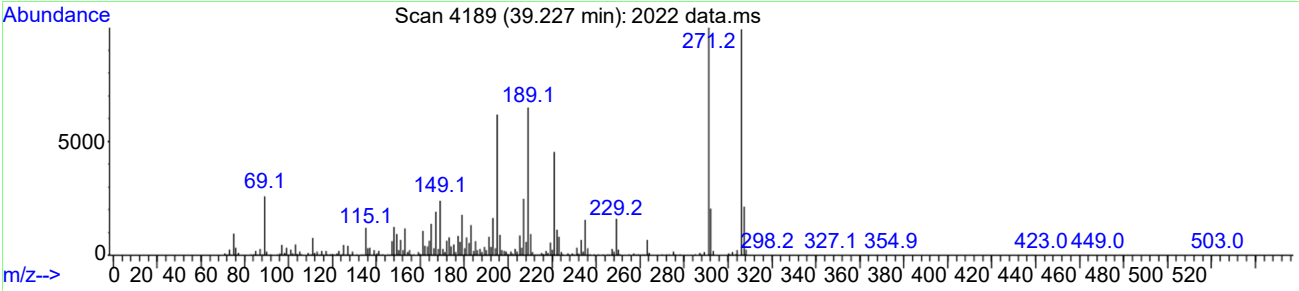


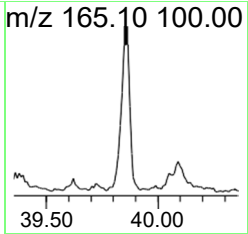
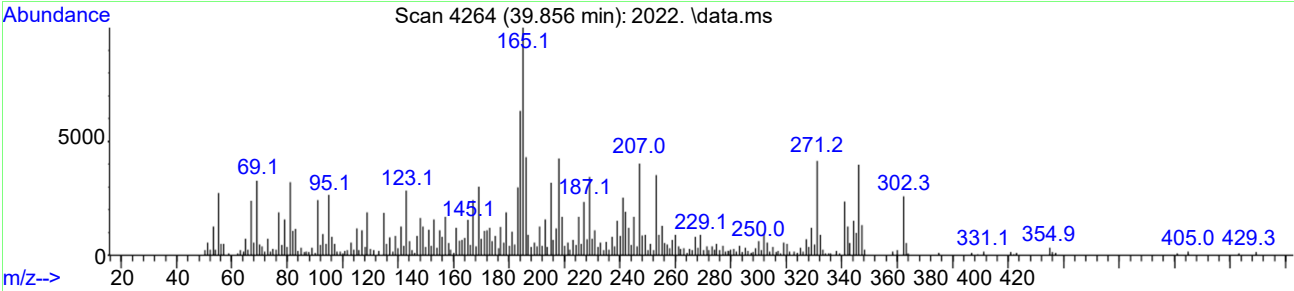




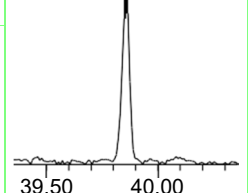




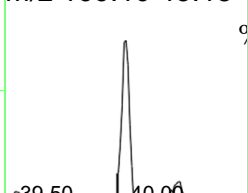




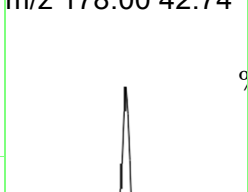
m/z 164.00 63.42 %



m/z 166.10 43.18 %



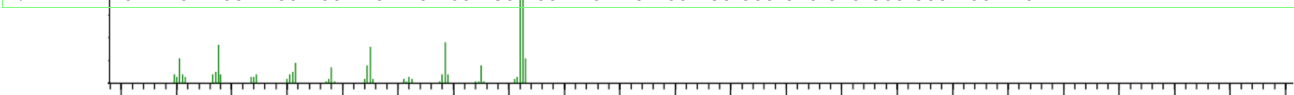
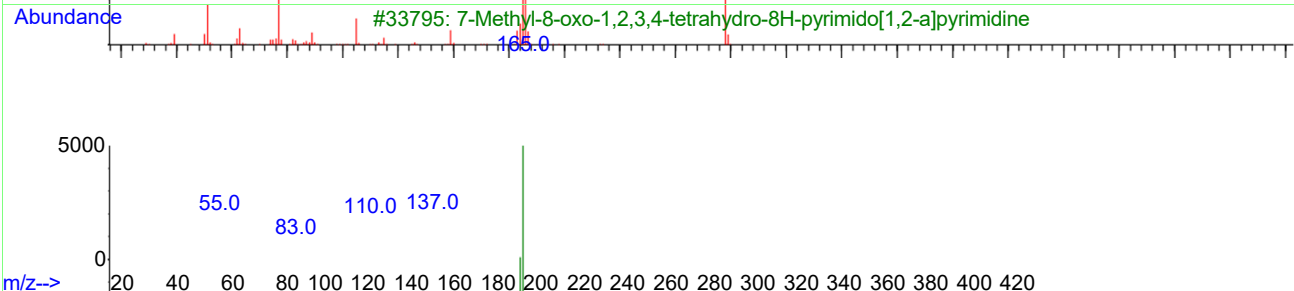
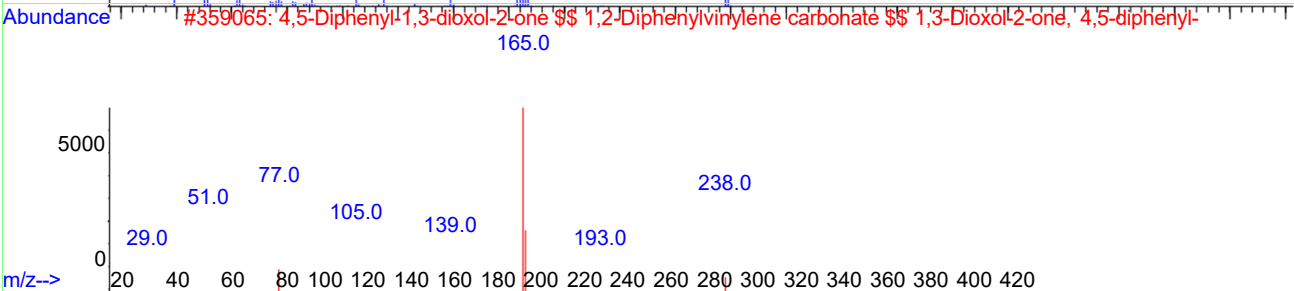
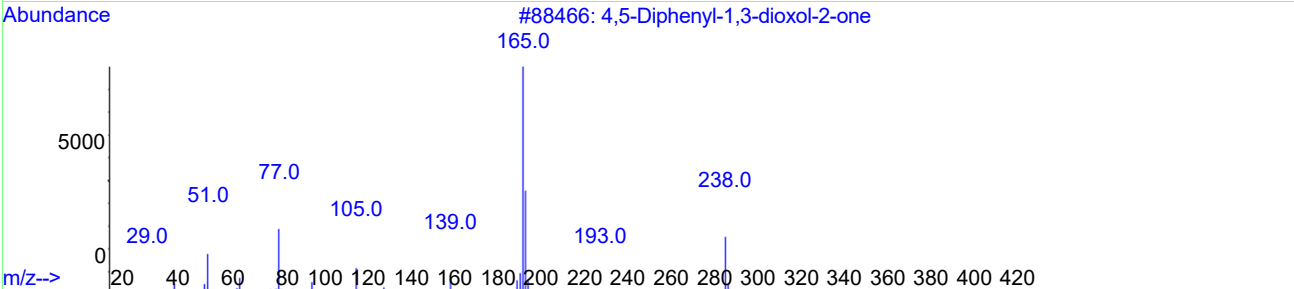
m/z 178.00 42.74 %



m/z 271.15 41.39 %



m/z 271.15 41.39 %



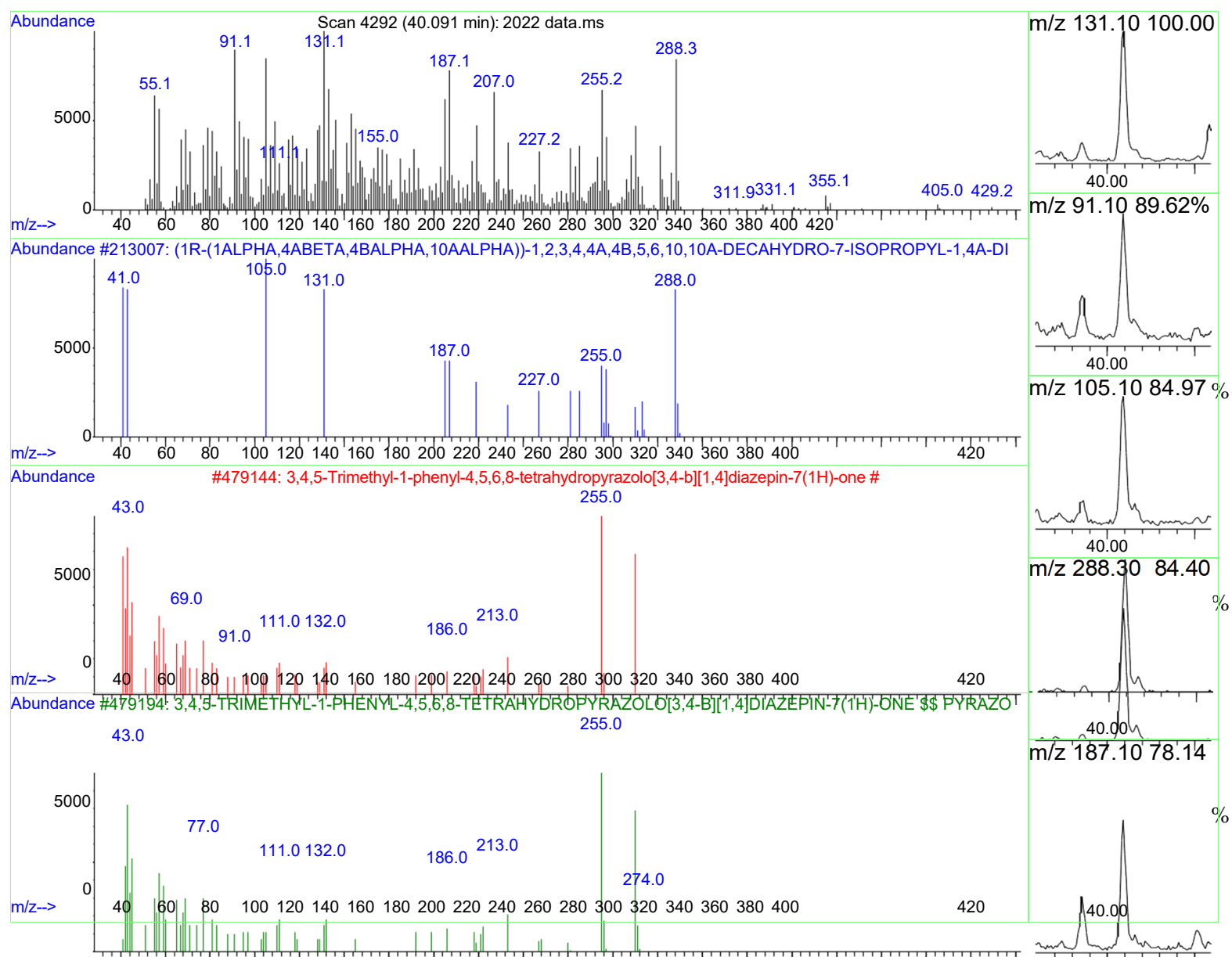


Figure S1. Mass spectrum of identified. phytochemical compounds from leaf extract of *Juniperus procera*.