

Preparation of magnetic MIL-68(Ga) metal-organic framework and heavy metal ion removal application

Youjun Zhang^{1,3}, **Licong Liu**⁴, **Dixiong Yu**², **Jinglan Liu**³, **Lin Zhao**³, **Jinpeng Liu**⁵, and **Shuo Liu**^{2,5*}

¹ School of Environmental Science and Engineering, Tianjin University, 92, Weijin Rd., Nankai District, 300350, China; zhangyoujun001@126.com

² Key Laboratory of Molecular Microbiology and Technology, Ministry of Education, Department of Microbiology, College of Life Sciences, Nankai University, Tianjin 300071, China

³ Tianjin North China Geological Exploration Bureau, 67, Guang-rui-xi-lu Rd., Tianjin, 300170, China

⁴ Technical Centre of Solid Waste and Soil Ecology of Inner Mongolia, Teng-fei Rd., Huhehaote, 010000, China

⁵ College of Environmental Science and Engineering, Tianjin Key Laboratory of Environmental Remediation and Pollution Control, Nankai University, 38 Tongyan Rd., Tianjin 300350, P. R. China

* Correspondence: liushuo@nankai.edu.cn

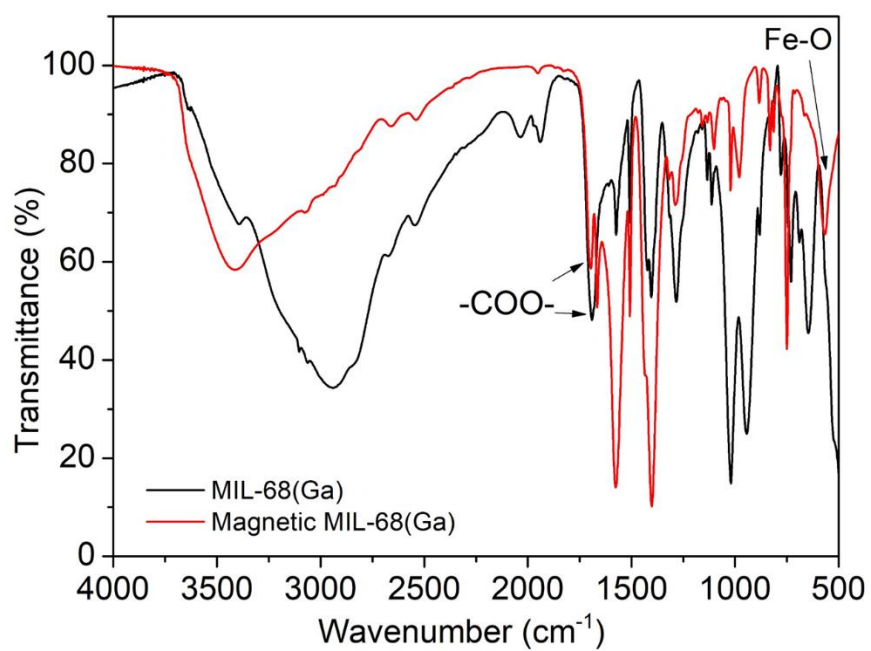


Figure S1. FT-IR spectrum of MIL-68(Ga) and magnetic MIL-68(Ga).

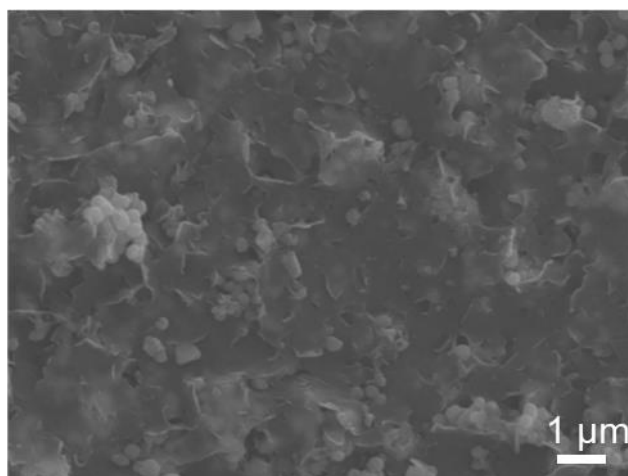


Figure S2. SEM images of magnetic MIL-68(Ga) after incubation in acidic solution (pH = 5) for 30 min.

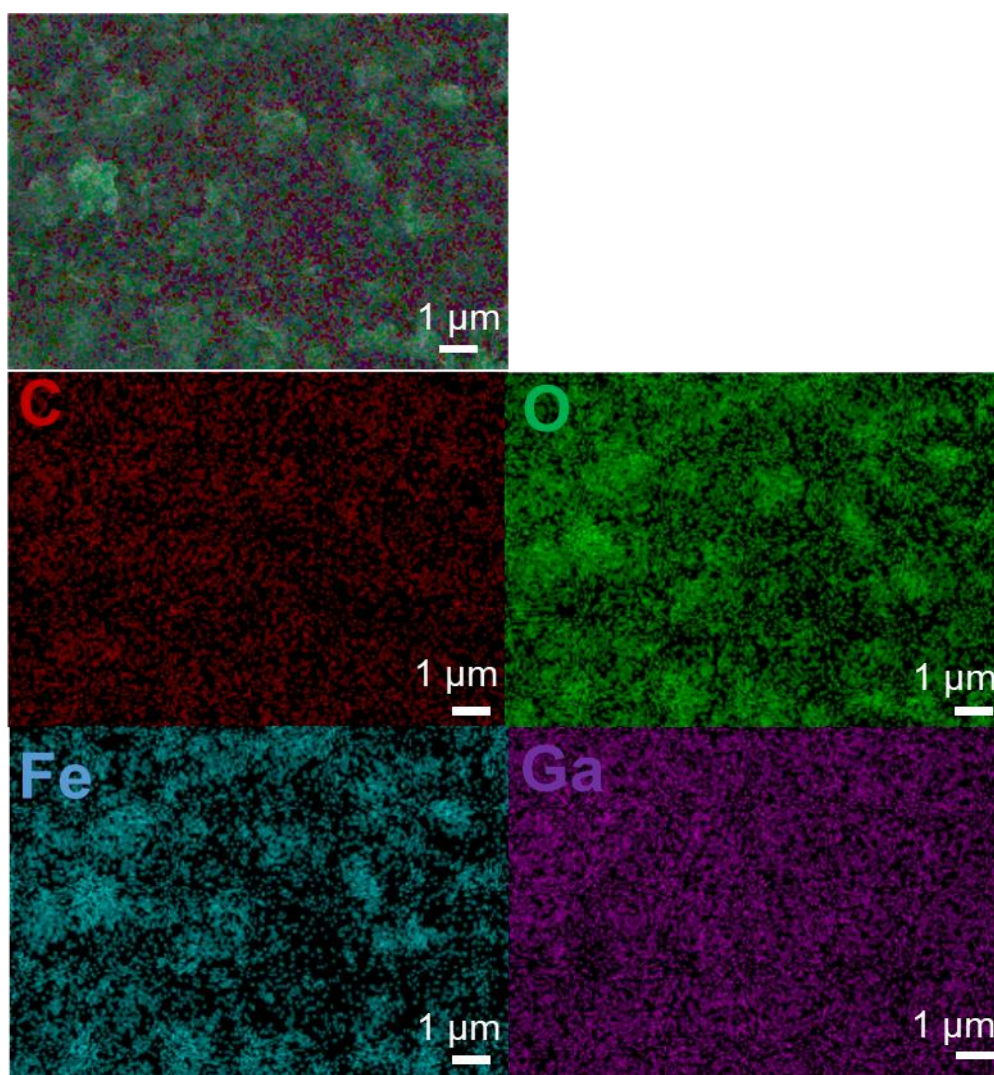


Figure S3. EDS mapping images of magnetic MIL-68(Ga) after incubation in acidic solution (pH = 5) for 30 min.

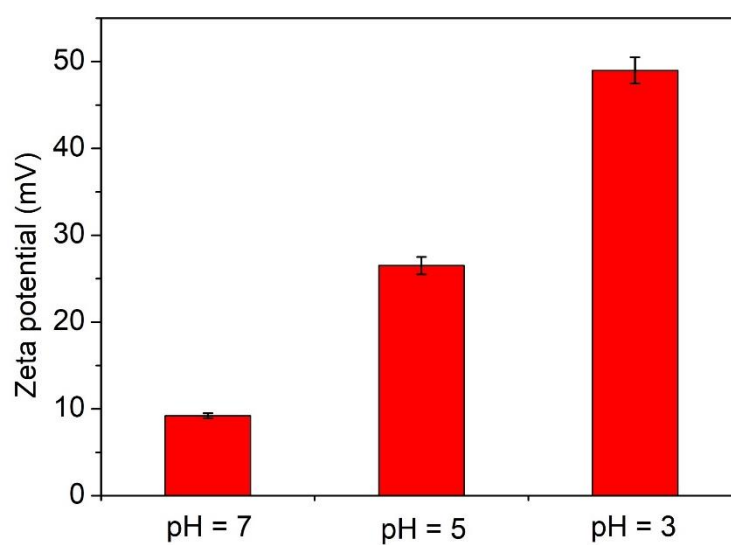


Figure S4. Effect of pH on the zeta potential of magnetic MIL-68(Ga).

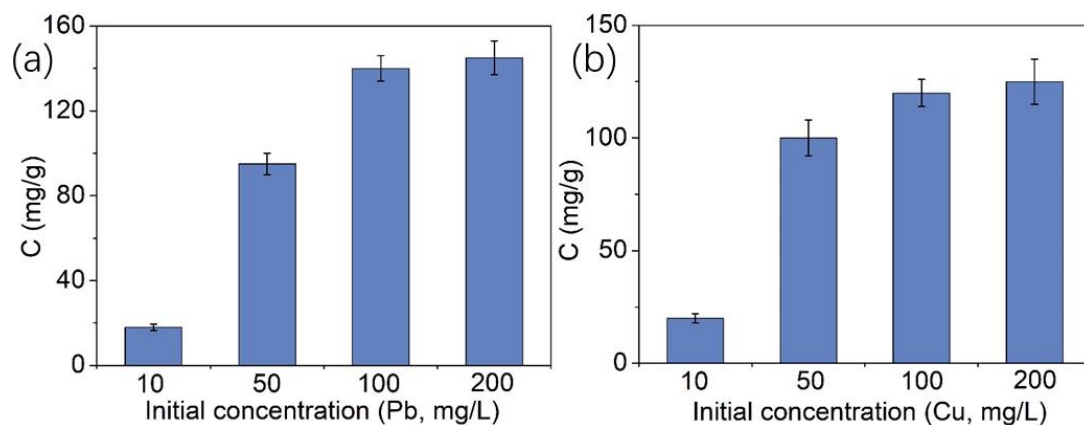


Figure S5. Adsorption capacity of MIL-68(Ga) on Pb^{2+} (a) and Cu^{2+} (b). (50 mg/L of metal ions, 200 mg/mL of adsorbent, 1 mL solution, pH = 7, room temperature, 30 min of incubation time).

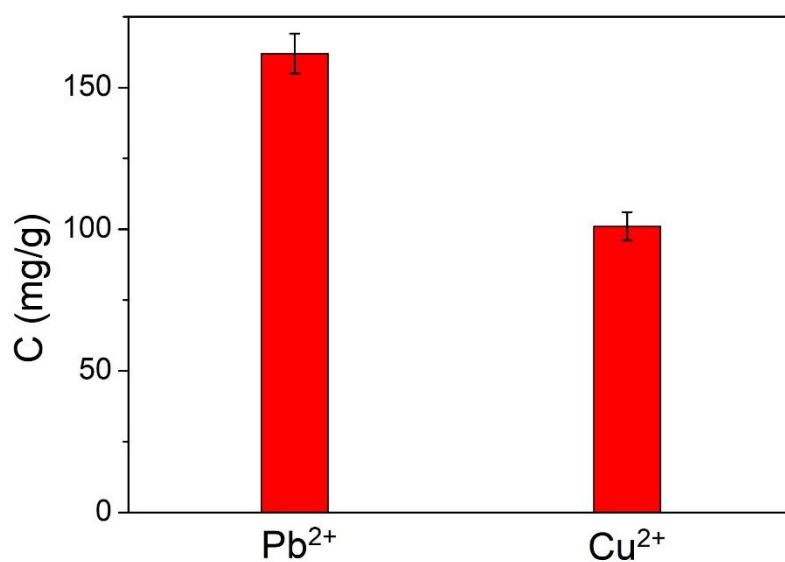


Figure S6. Adsorption capacity of MIL-68(Ga) in the mixture of Pb^{2+} and Cu^{2+} (100 mg/L of Pb^{2+} and Cu^{2+} , 200 mg/mL of adsorbent, 1 mL solution, pH = 7, room temperature, 30 min of incubation time).

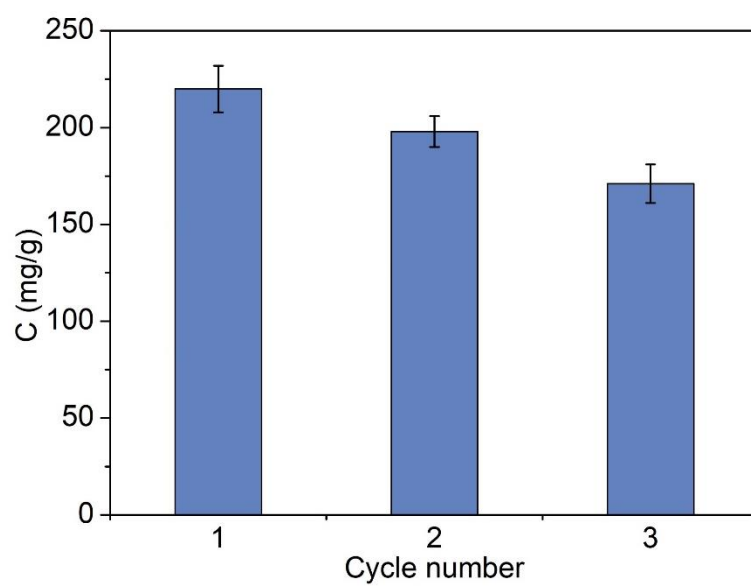


Figure S7. Reusability evaluation of magnetic MIL-68(Ga) (50 mg/L of metal ions, 200 mg/mL of adsorbent, 1 mL solution, pH = 7, room temperature, 30 min of incubation time).