

Supplementary file

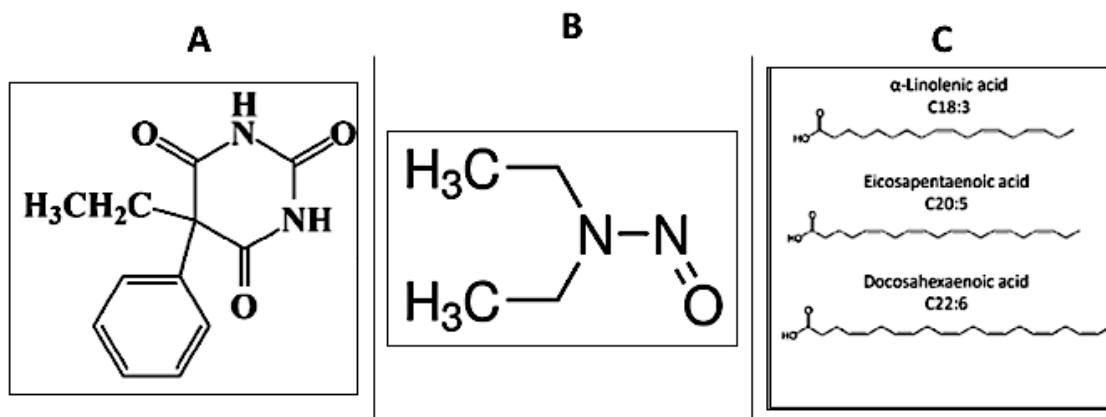


Figure S1. Chemical structure of N-Nitrosodiethylamine (A), phenobarbital (B), and n-3 Polyunsaturated fatty acids (C).

Table S1. Area % of pSTAT3, Cyclin D1, and Bcl-2 expression in different groups as mean \pm SD.

****P-**

Groups	Bcl-2	Cyclin D	pSTAT3	F- Value	P-Value
Control	29.21 \pm 2.744 ^a	4.223 \pm 1.496 ^a	7.567 \pm 2.512 ^a	680.755	0.000**
DEN	83.326 \pm 3.529 ^c	79.324 \pm 2.452 ^c	71.547 \pm 2.657 ^c	2553.082	0.000**
n-3 PUFAs	40.564 \pm 1.244 ^b	14.024 \pm 1.87 ^b	25.303 \pm 3.326 ^b	803.925	0.000**

Values ≤ 0.001 are highly significant.

Different superscripts indicate significant difference at $p \leq 0.05$.

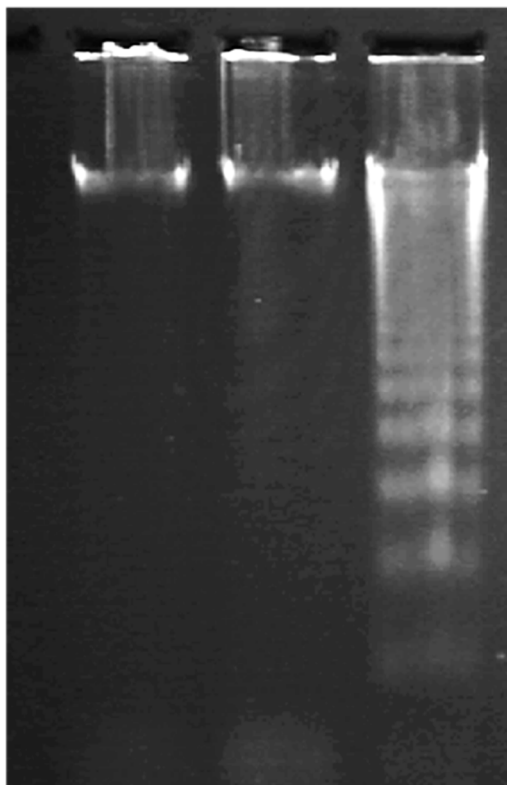


Figure S2. Raw gel image of the influence of n-3 PUFAs on DEN-induced hepatic DNA

Figure S3A

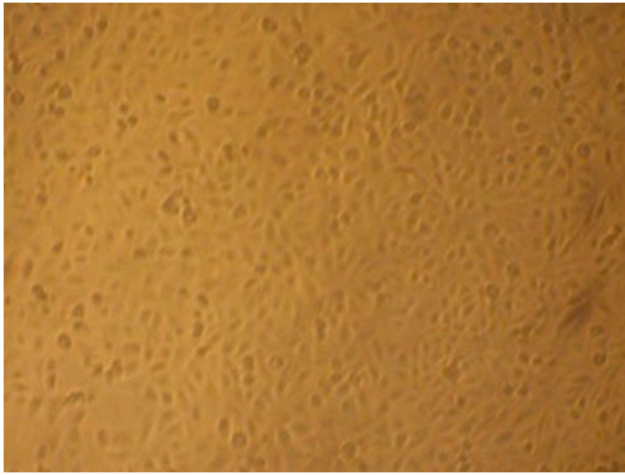


Figure S3B

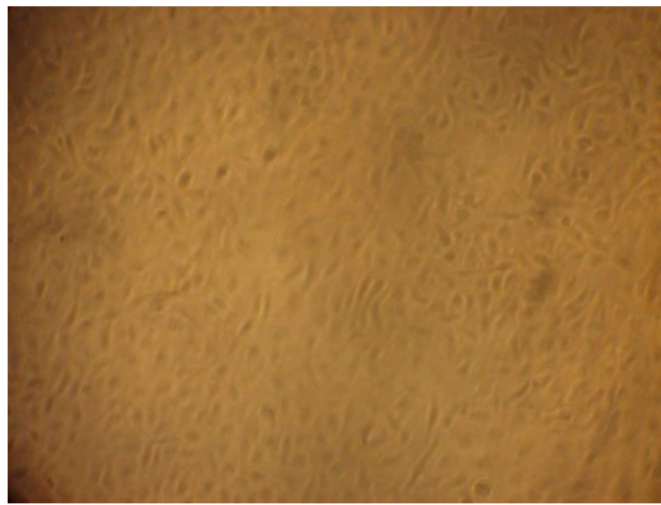


Figure S3C

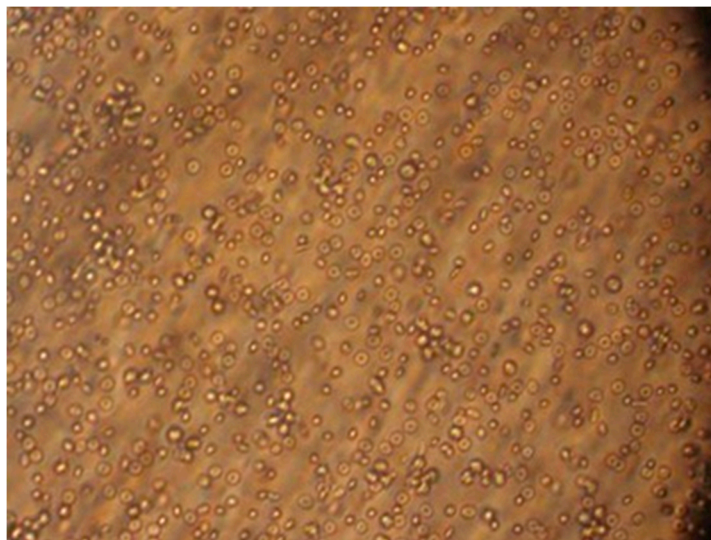


Figure S3 (A,B,C). Original images for the morphological changes of HepG2 cells at 40×10 magnifications

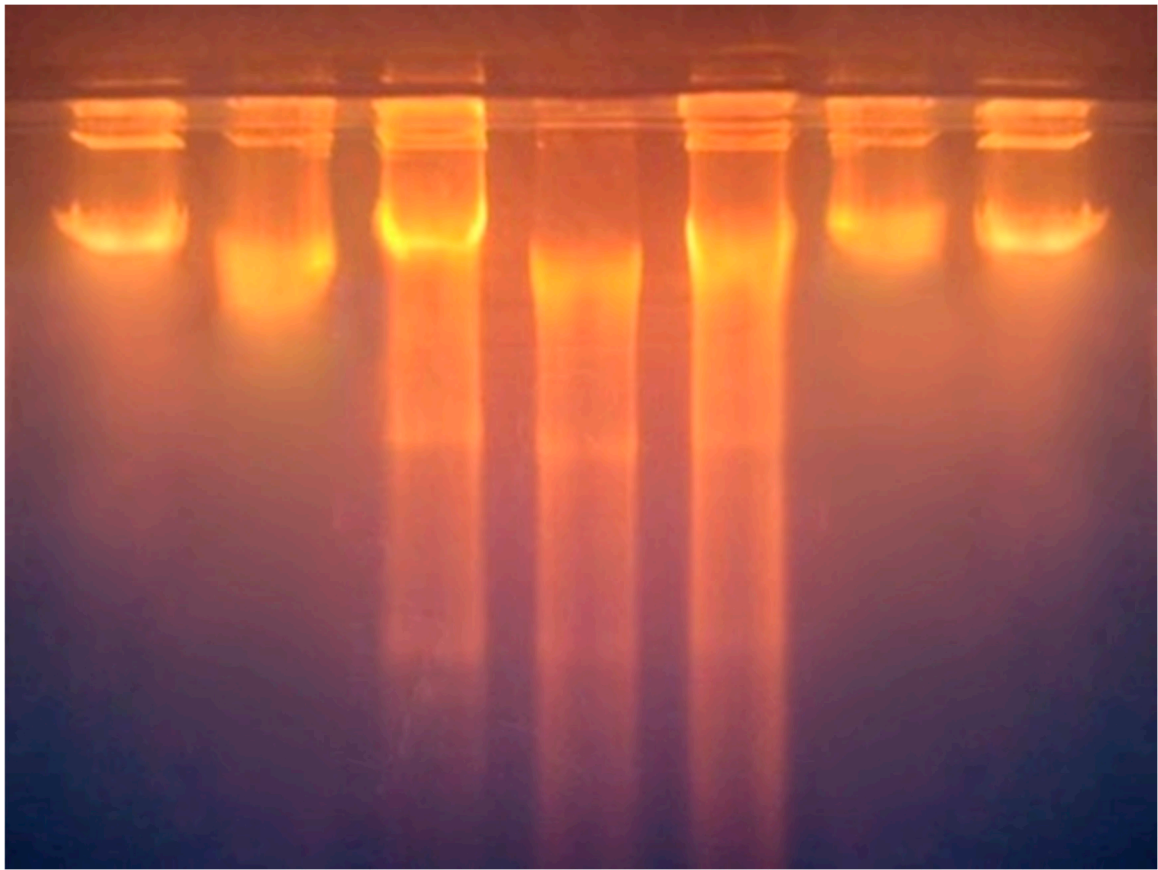


Figure S4. Raw gel image for the detection of DNA fragmentation by agarose gel electrophoresis

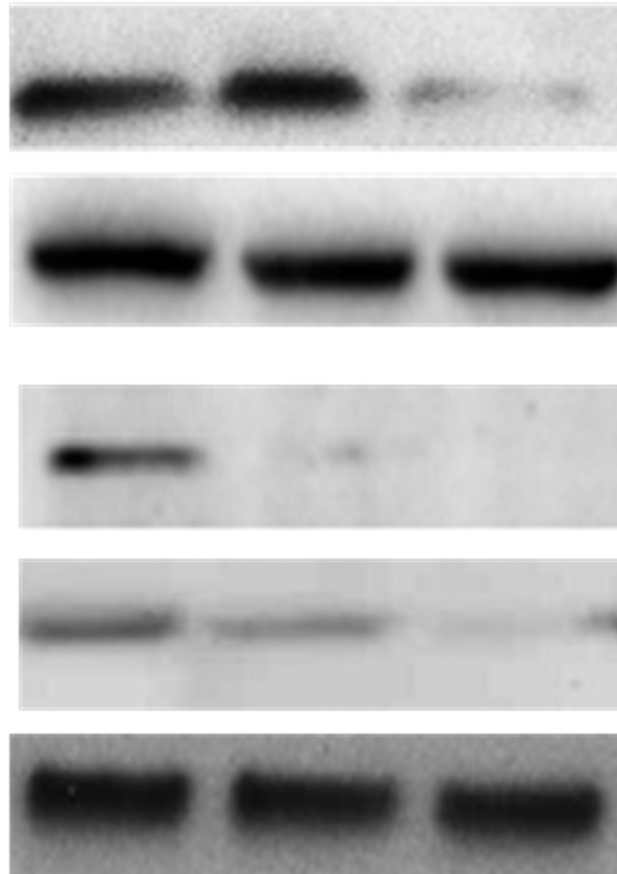


Figure S5. Western blot image for p-STAT3, STAT3, Bcl-2, Cyclin D1 and β -actin protein