

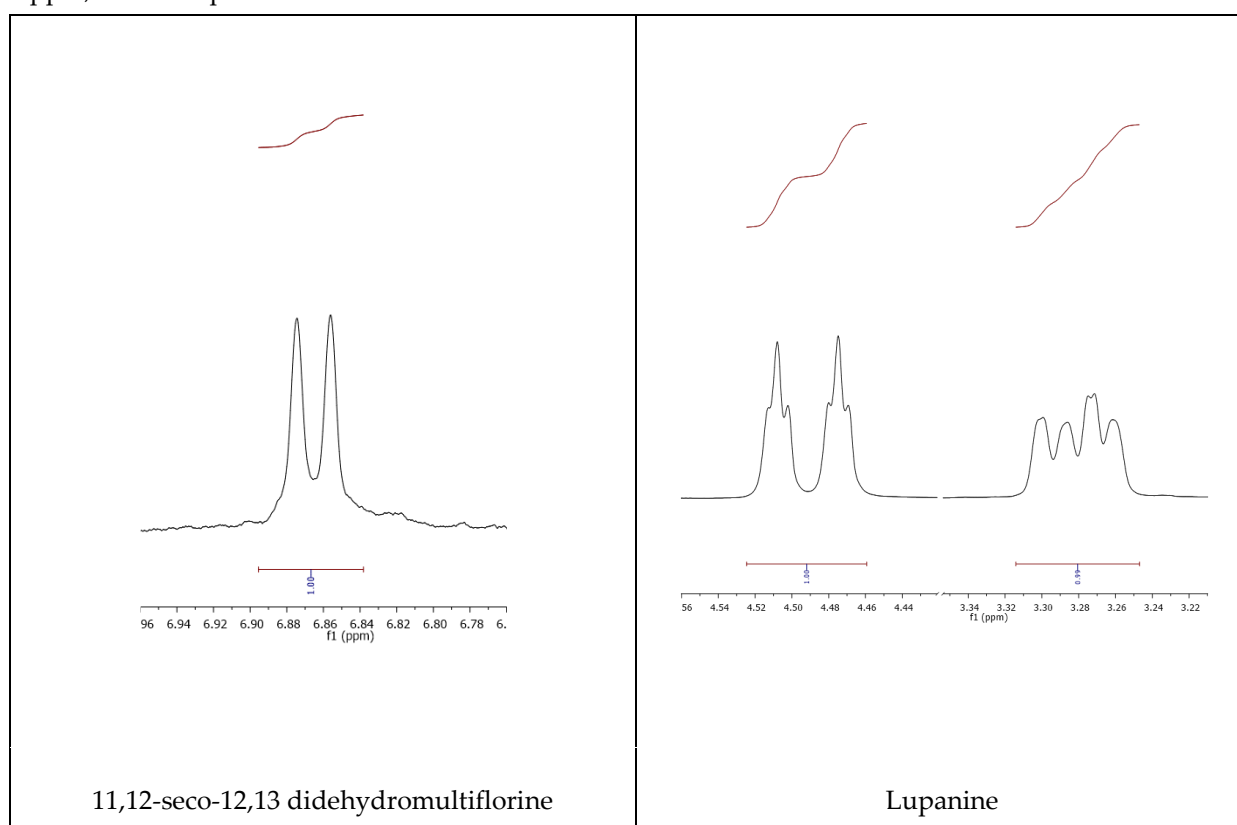
Article

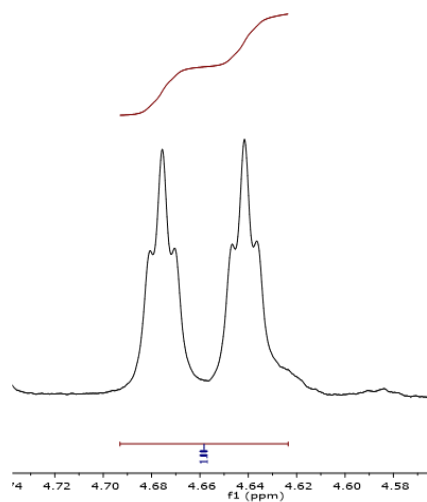
Quantitation of *Lupinus* spp. Quinolizidine Alkaloids by qNMR and Accelerated Debitting with a Resin-Based Protocol

Nikoleta Anna Madelou, Eleni Melliou, Prokopios Magiatis*

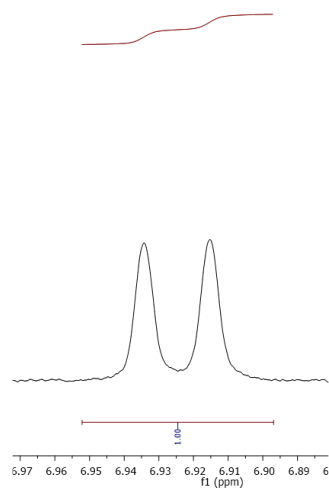
Department of Pharmacy, Laboratory of Pharmacognosy and Natural Products Chemistry, National and Kapodistrian University of Athens, 15771 Athens, Greece; nikoletamadelou@gmail.com (N.M.); emel-liou@pharm.uoa.gr (E.M.); magiatis@pharm.uoa.gr (P.M.)

Table S1. Characteristic peaks from ¹H-NMR spectrum of studied alkaloids and their δ -values in ppm, used for quantitation.

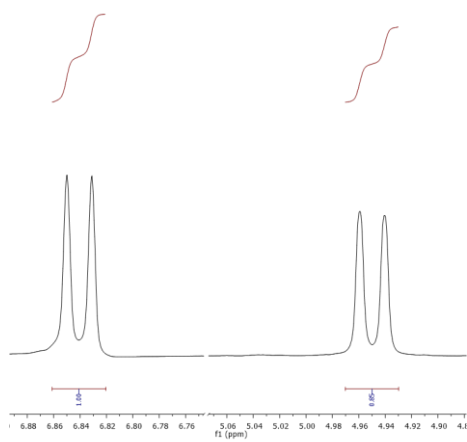




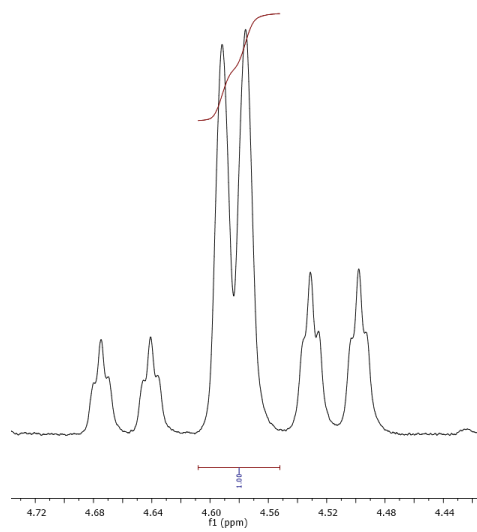
Angustifoline



Albine



Multiflorine



13-OH-lupanine

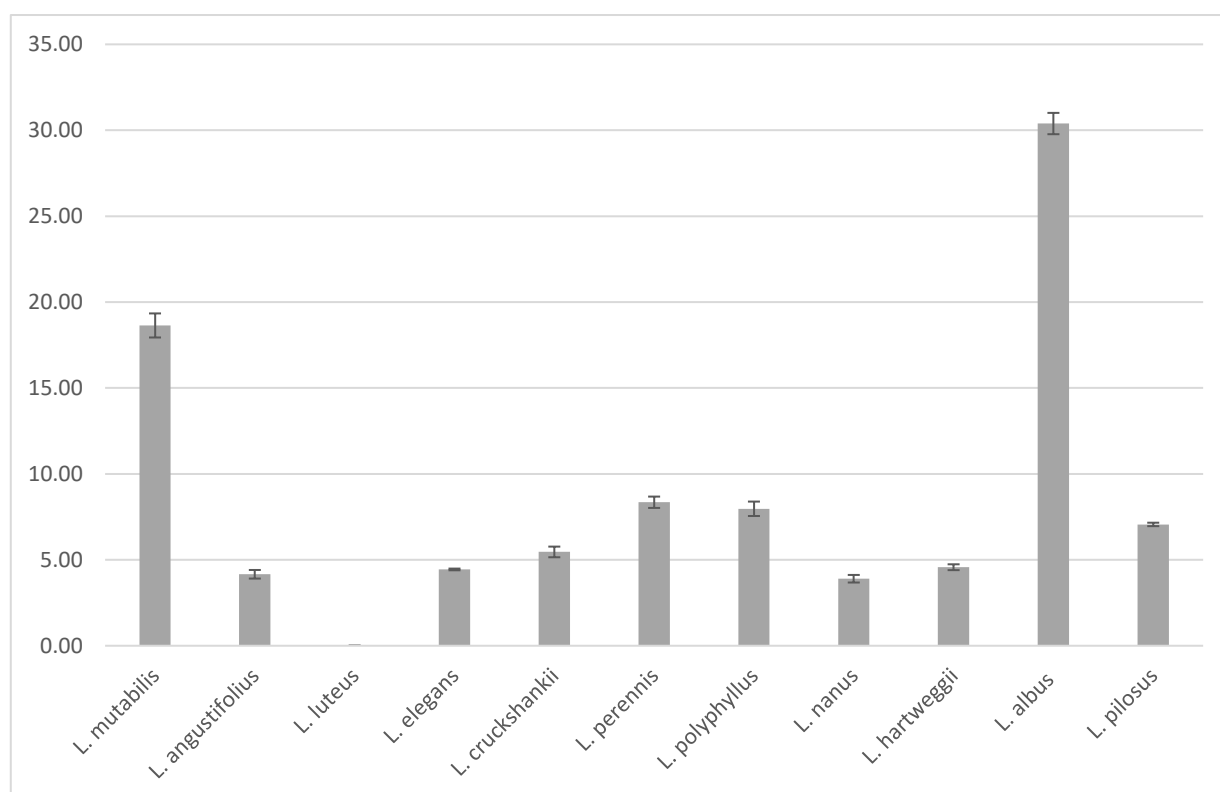
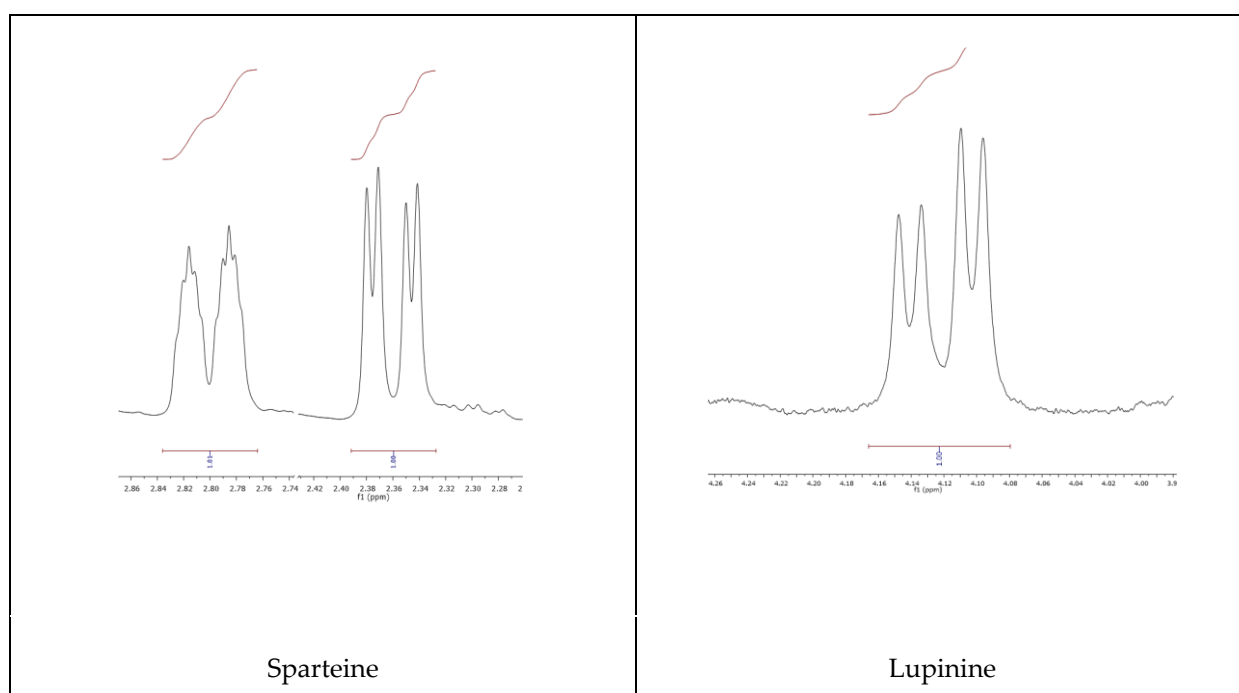


Figure S1. Quantitation results of QAs concentration in extracts of each of the studied species, expressed in mg/g DW.

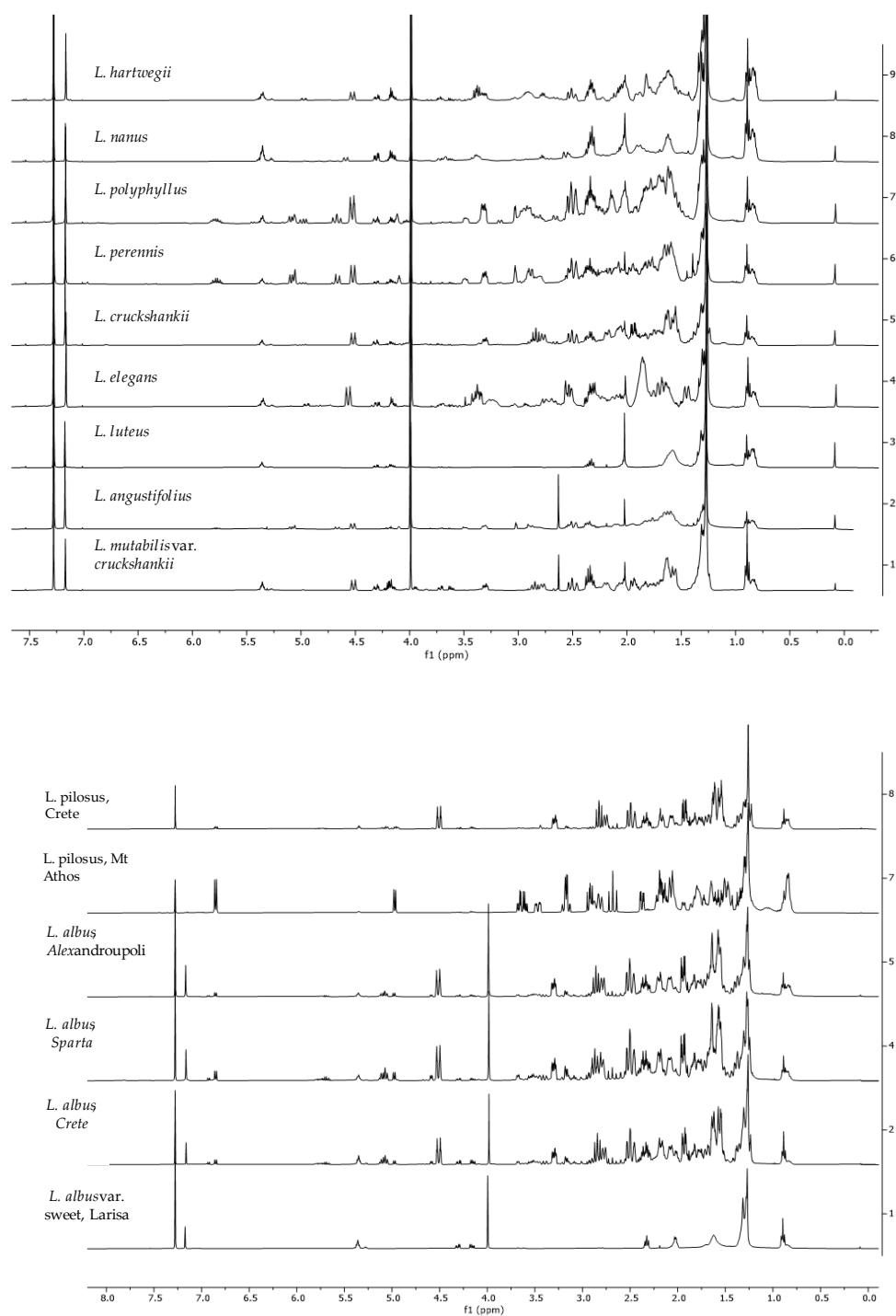


Figure S2. ¹H-NMR spectra (400 MHz, CDCl₃, δ-values in ppm) from all *Lupinus* spp. quantified.

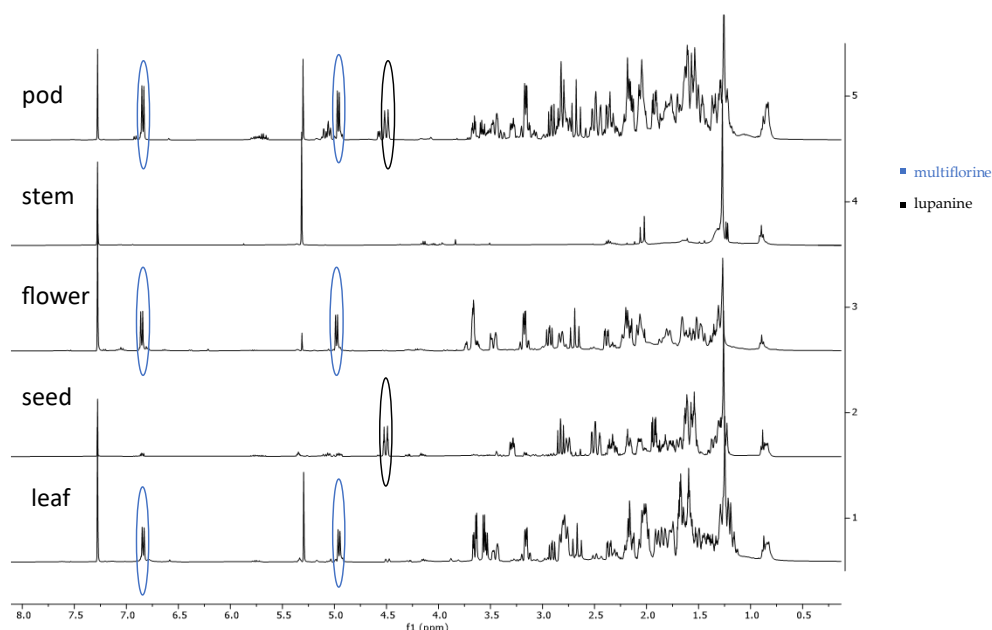


Figure S3. ^1H -NMR spectra (400 MHz, CDCl_3 , δ -values in ppm) from all aerial parts of *L. pilosus* from Crete in an early stage of development.

Table S2. Intraday precision data for the studied substances, expressed as relative standard deviations (%).

Species	N	Lupanine	13-OH-lupanine	Multiflorine	Lupanine
<i>L. albus</i> , Crete	3	1.16	2.19	6.99	-
<i>L. albus</i> , Alexandroupoli	3	1.80	5.81	5.17	-
<i>L. albus</i> , Sparta	3	1.59	2.54	2.00	-
<i>L. albus</i> var. sweet	3	-	-	6.25	-
<i>L. pilosus</i> Crete	3	2.06	6.25	2.57	-
<i>L. pilosus</i> , Mt. Athos	3	-	-	1.33	4.34
<i>L. angustifolius</i>	3	7.27	-	-	-
<i>L. cruckshankii</i>	3	4.43	-	-	-
<i>L. elegans</i>	3	1.12	-	-	-
<i>L. hartwegii</i>	3	3.71	-	-	-
<i>L. mutabilis</i> var. <i>cruckshankii</i>	3	6.41	4.34	-	-
<i>L. nanus</i>	3	5.64	-	-	-
<i>L. perennis</i>	3	5.17	7.54	-	-
<i>L. polyphyllus</i>	3	5.42	5.40	-	-
<i>L. luteus</i>	3	-	-	-	-

Species	N	11,12-seco-12,13-didehydromultiflorine	Angustifoline	Albine	Sparteine
<i>L. albus</i> , Crete	3	3.20	6.18	3.75	-
<i>L. albus</i> , Alexandroupoli	3	3.57	6.66	5.40	-
<i>L. albus</i> , Sparta	3	3.63	4.05	6.87	-
<i>L. albus</i> var. sweet	3	-	-	-	-

<i>L. pilosus</i> Crete	3	6.25	7.69	6.66	-
<i>L. pilosus</i> , Mt. Athos	3	-	-	-	-
<i>L. angustifolius</i>	3	-	2.00	-	-
<i>L. cruckshankii</i>	3	-	-	-	7.40
<i>L. elegans</i>	3	-	-	-	-
<i>L. hartwegii</i>	3	-	-	-	-
<i>L. mutabilis</i> var. <i>cruckshankii</i>	3	-	-	-	3.17
<i>L. nanus</i>	3	-	-	-	-
<i>L. perennis</i>	3	-	1.80	-	-
<i>L. polyphyllus</i>	3	-	3.84	-	-
<i>L. luteus</i>	3	-	-	-	-
