

SUPPLEMENTARY INFORMATION

A New Glucosyl Flavone with Inhibitory Activity of Cancer Cell Viability and Other Bioactive Constituents from the Traditional Kurdish Plant *Plantago loeflingii* L.

Hawraz Ibrahim M. Amin *, Kamaran Younis M. Amin, Chabaco Armijos, Faiq H. S. Hussain, Zanko Hassan Jawhar, Diego Caprioglio, Mariella Mella and Giovanni Vidari *

S1. ¹ H NMR spectrum (300 MHz, CD ₃ OD) of compound 1 .	Page 2
S2. ¹ H- ¹ H COSY spectrum of compound 1 .	Page 3
S3. ¹³ C NMR spectrum (75 MHz, CD ₃ OD) of compound 1 .	Page 4
S4. DEPT spectrum of compound 1 .	Page 5
S5. HSQC spectrum of compound 1 .	Page 6
S6. HSQC spectrum (enlargement) of compound 1 .	Page 7
S7. ESI-MS (negative ion mode) spectrum of compound 1	Page 8
S8. TLC chromatograms (RP 18 phase; eluent: MeOH-H ₂ O, 55:45) of subextract B3 and the fractions resulting from its MPLC separation. Circled spots were visualized under UV light (254 nm) after spraying with vanillin-sulfuric acid reagent (see <i>Section 3.1.</i> in Material and Methods). A: crude extract B3; B-C: fractions resulting from the MPLC separation of B3.	Pages 8-10

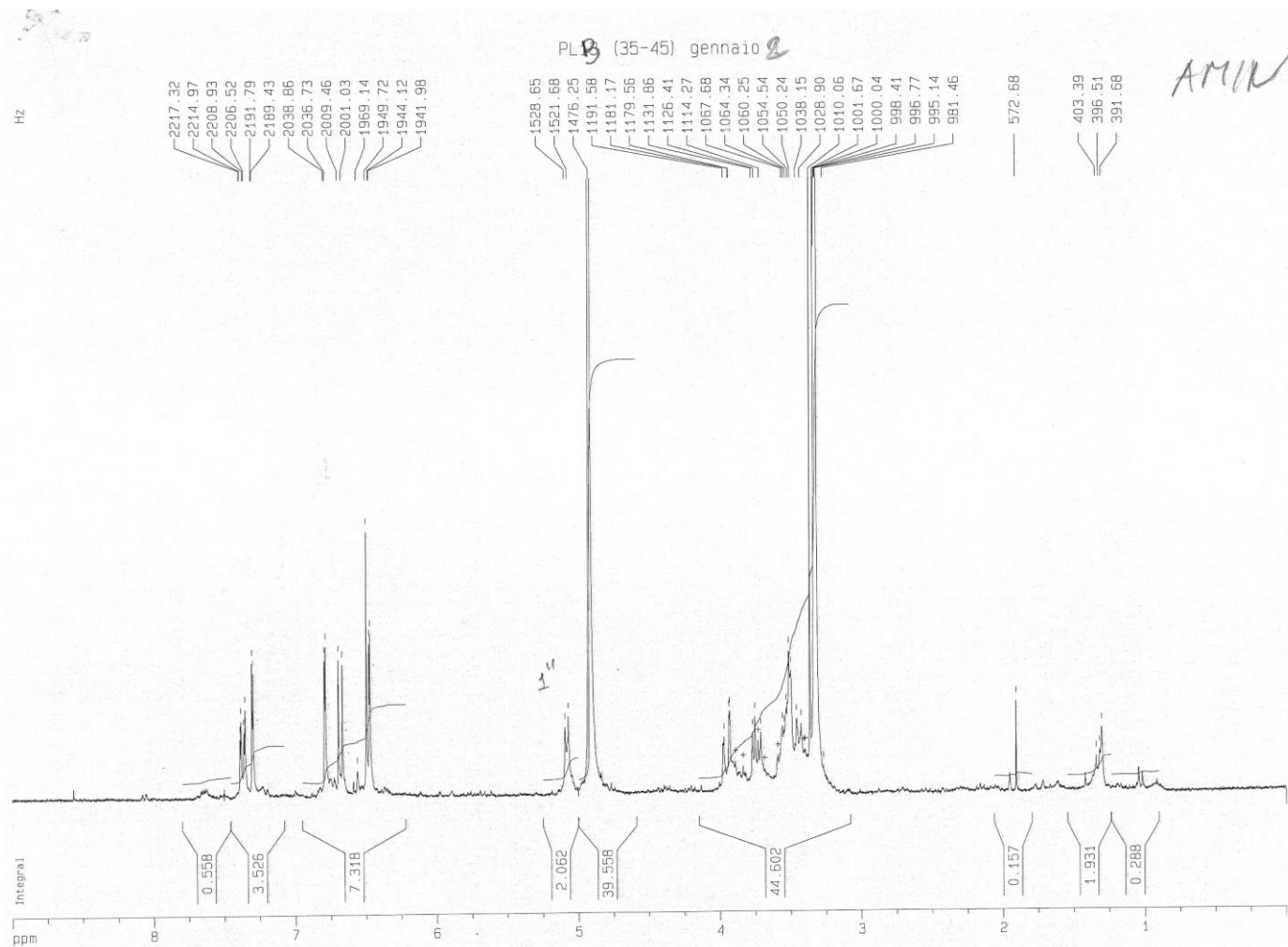


Figure S1. ^1H NMR spectrum (300 MHz, CD_3OD) of compound 1.

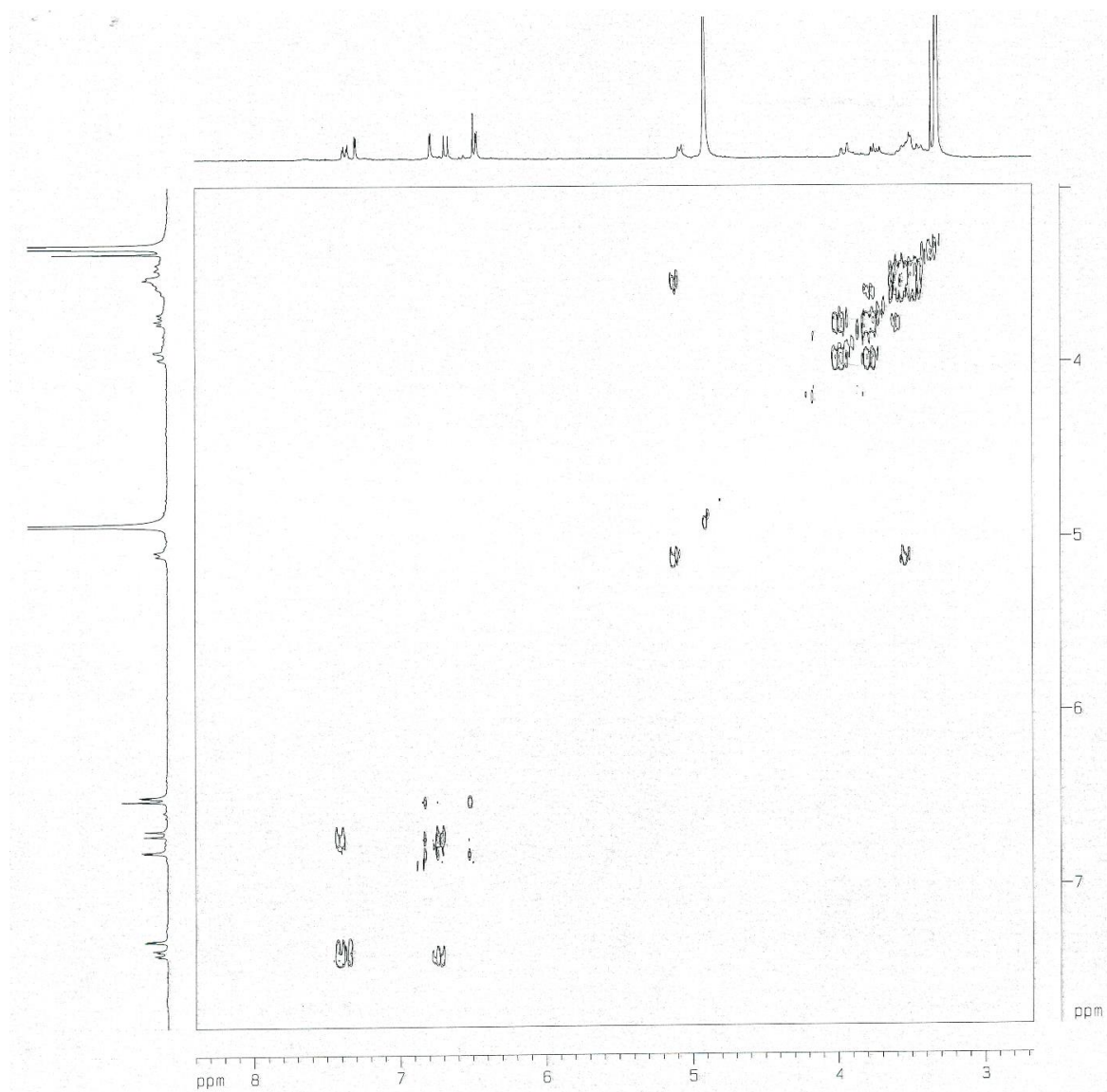


Figure S2. ^1H - ^1H COSY spectrum of compound **1**.

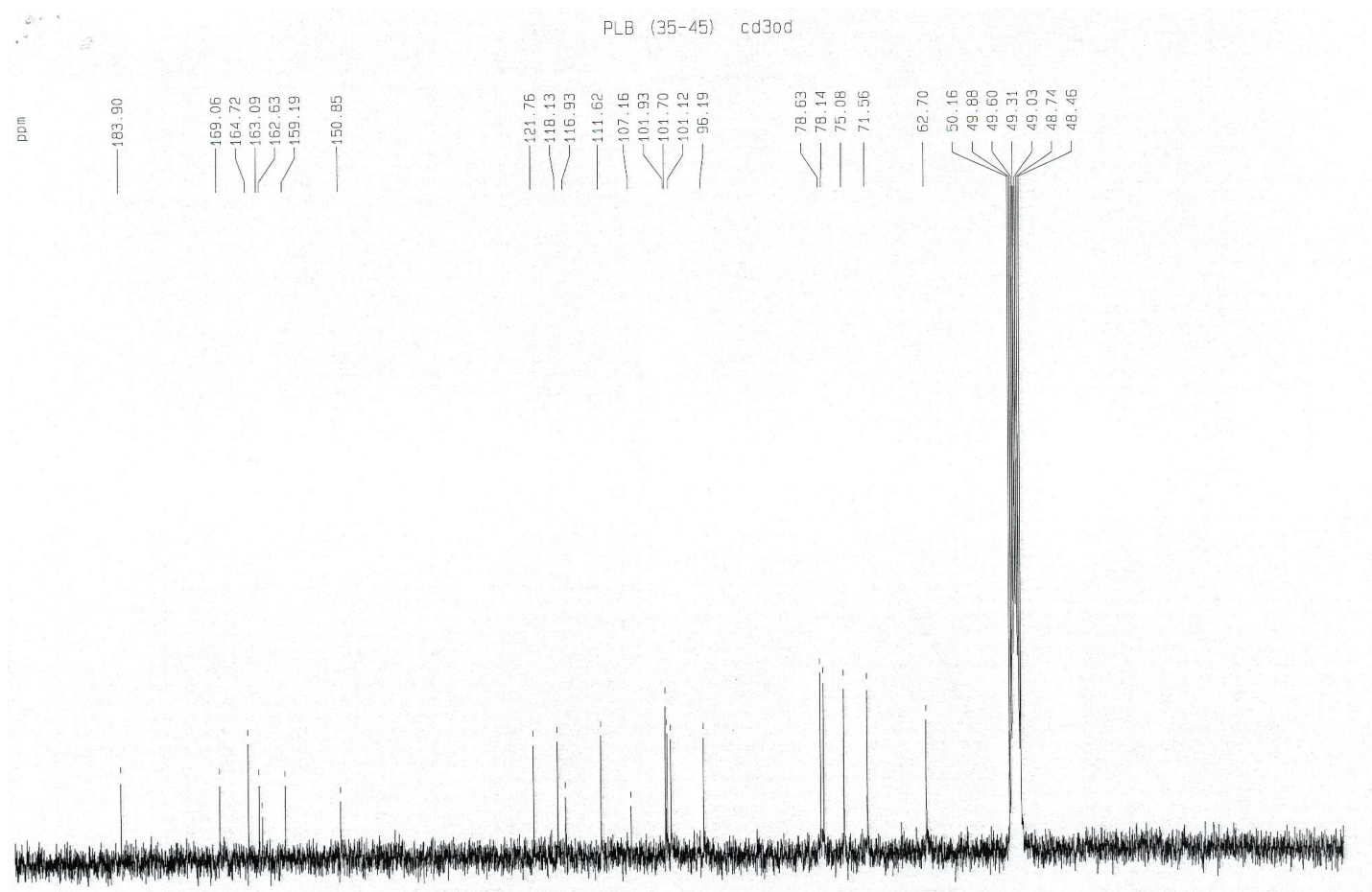


Figure S3. ^{13}C NMR spectrum (75 MHz, CD_3OD) of compound **1**.

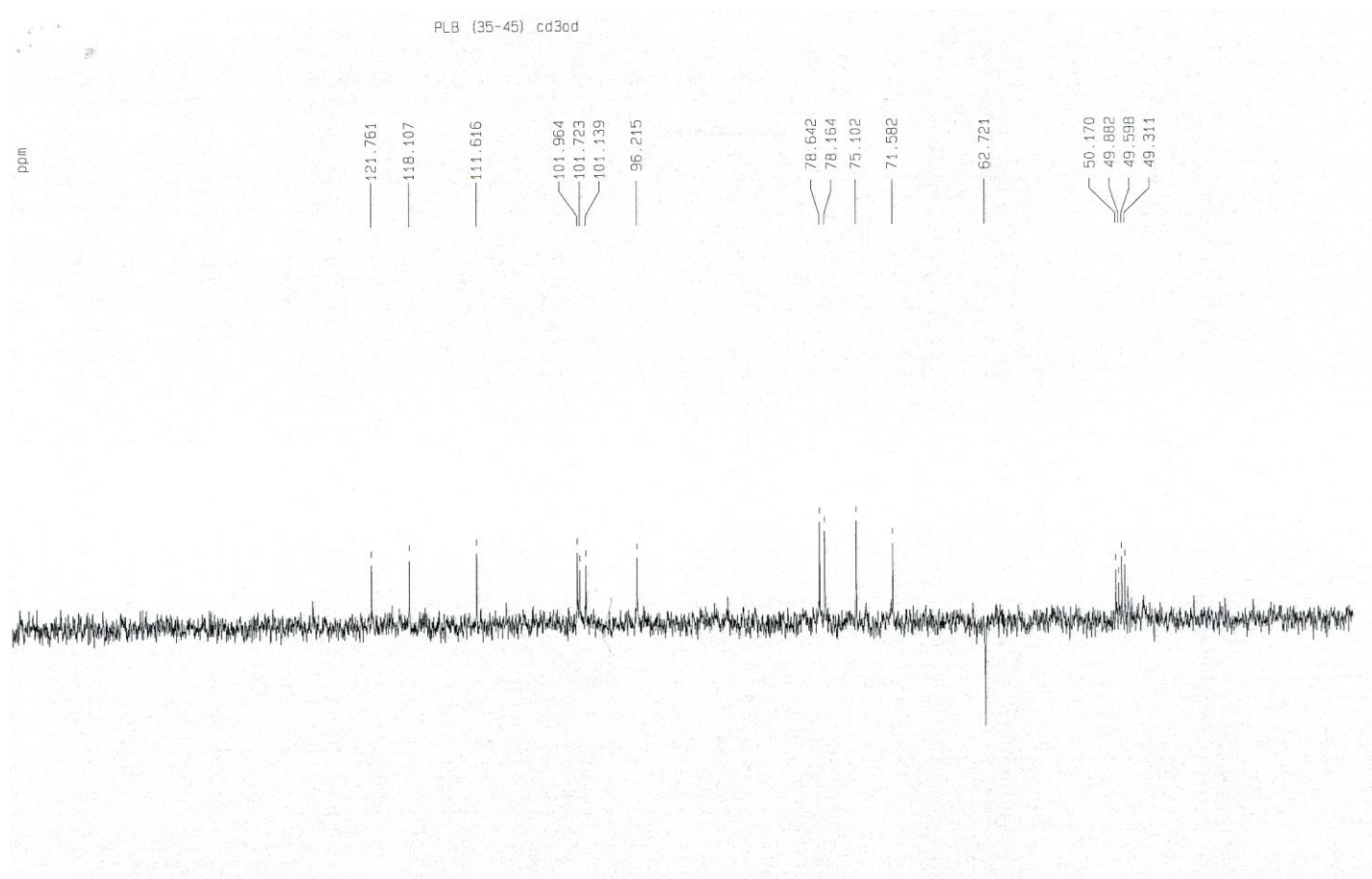


Figure S4. DEPT spectrum of compound **1**.

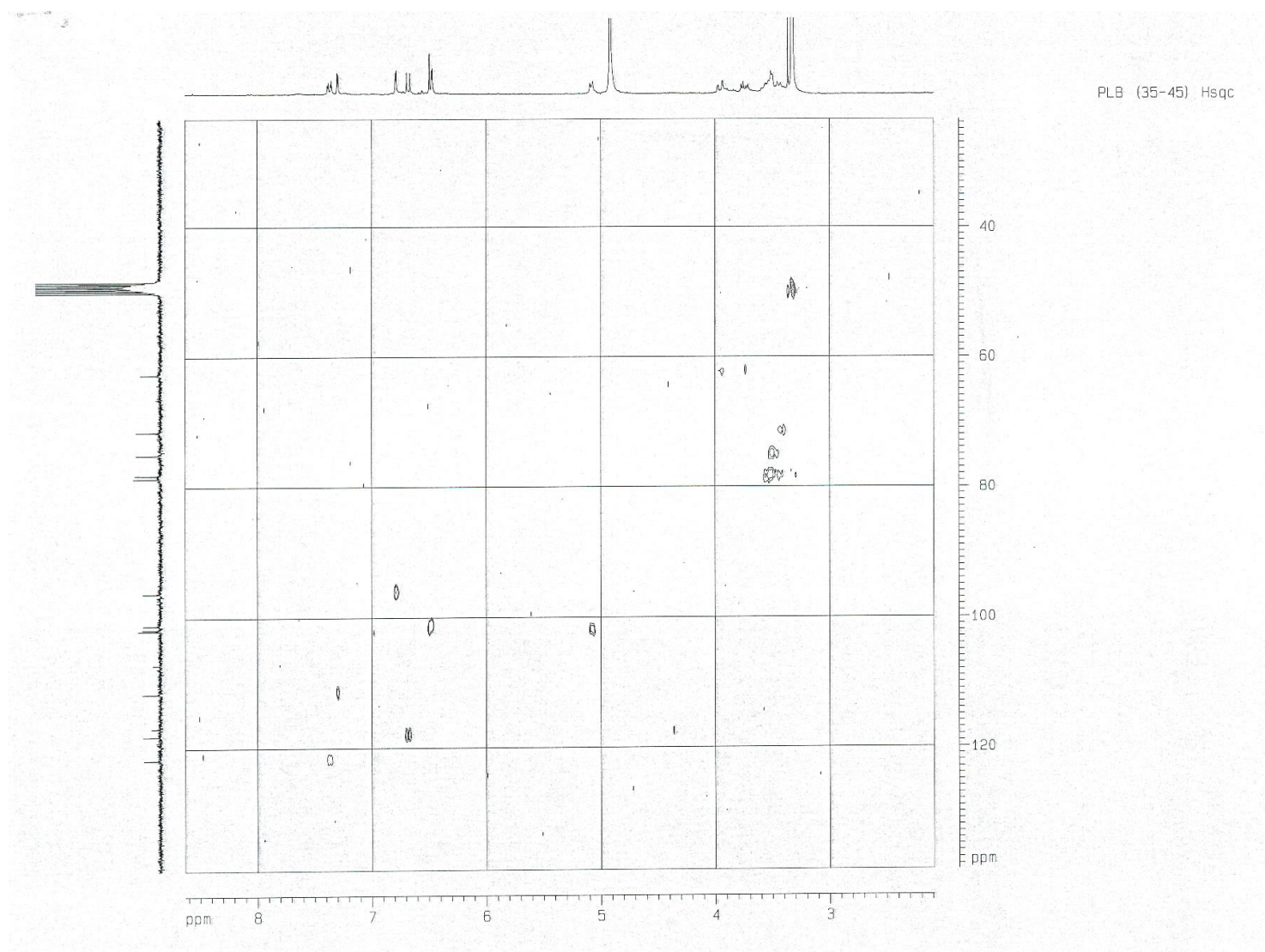


Figure S5. HSQC spectrum of compound **1**.

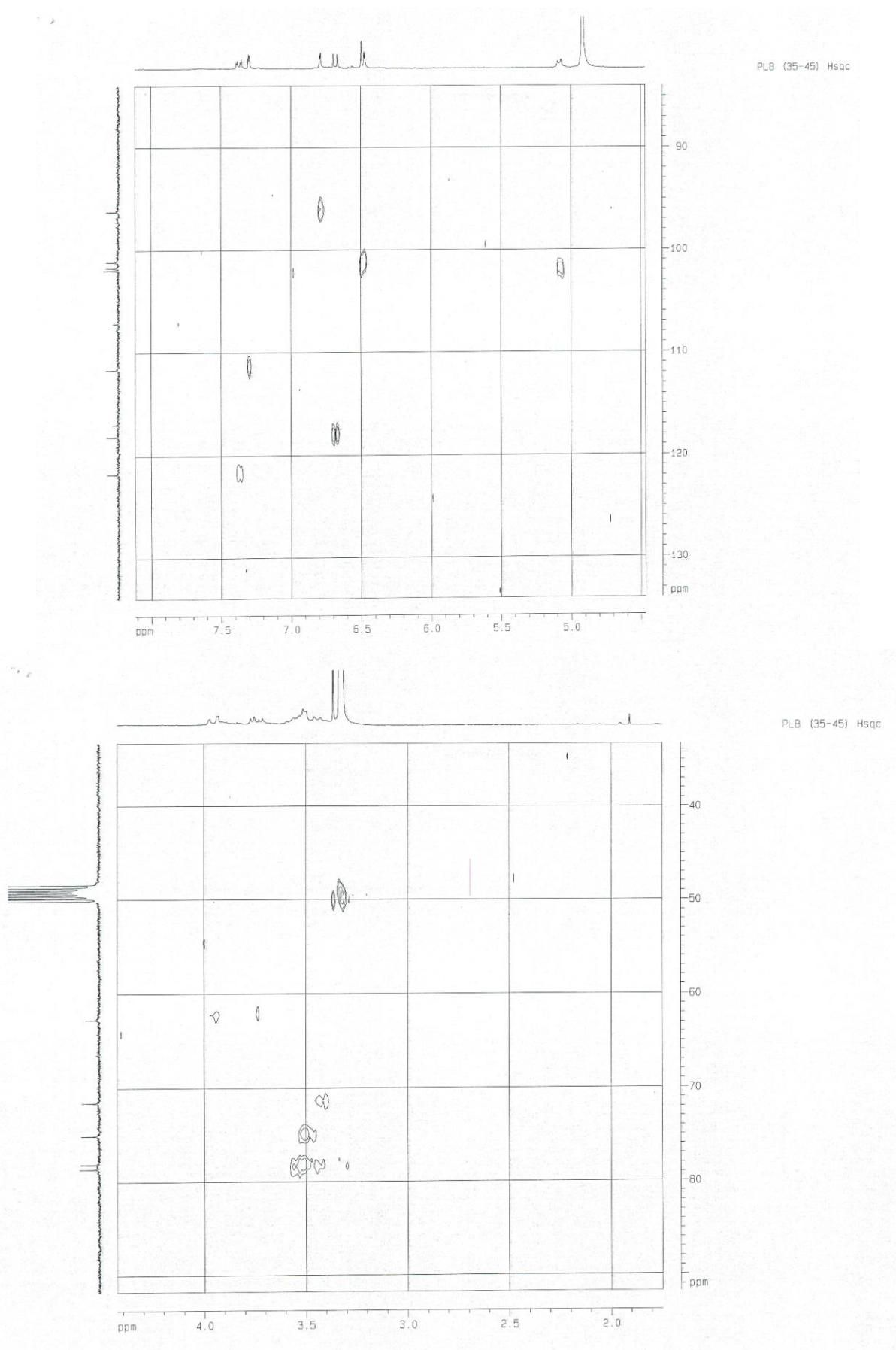


Figure S6. HSQC spectrum (enlargement) of compound **1**.

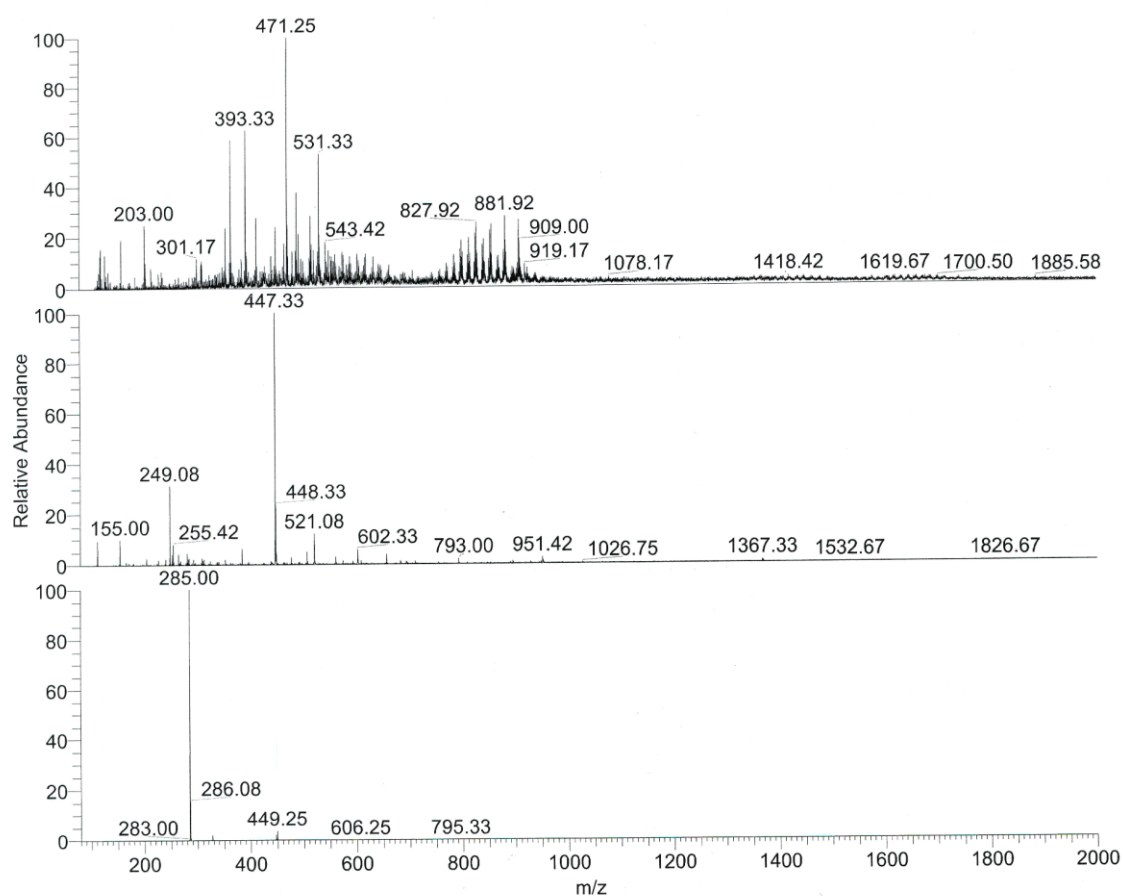
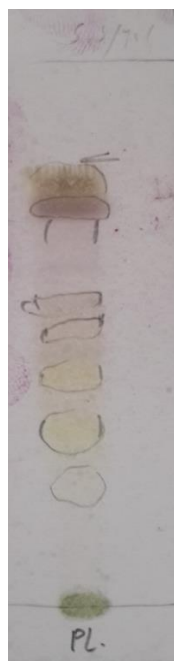
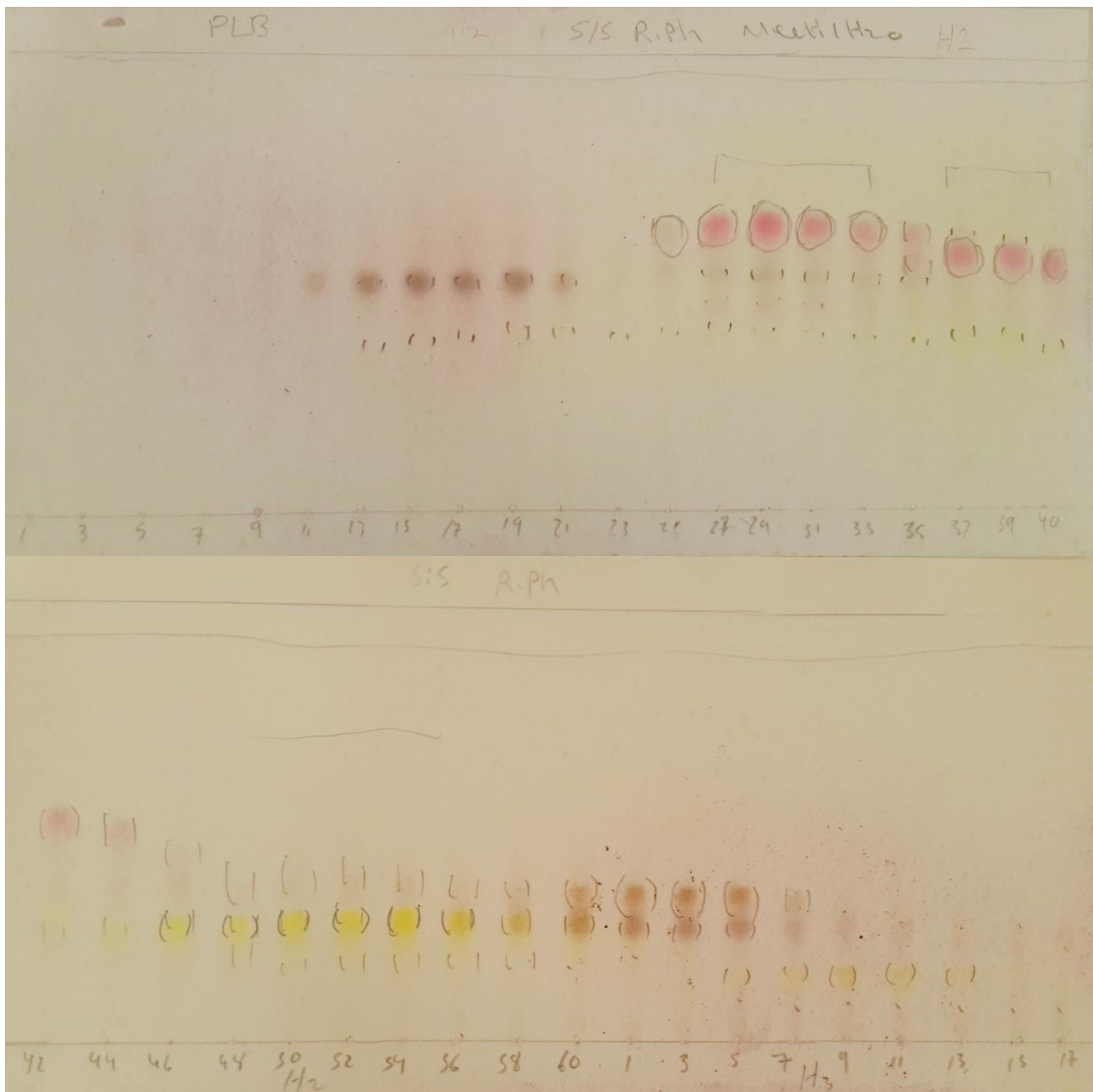
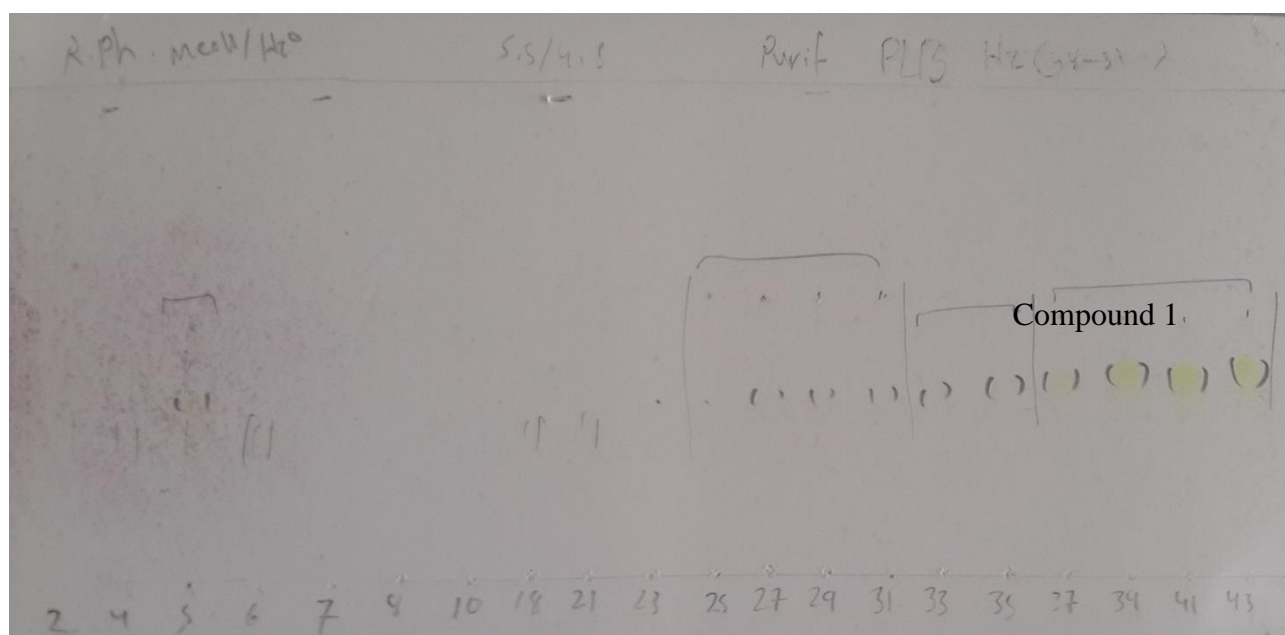


Figure S7. ESI-MS (negative ion mode) spectrum of compound **1**.





B



C

Figure S8. TLC chromatograms (RP 18 phase; eluent: MeOH-H₂O, 55:45) of subextract B3 and the fractions resulting from its MPLC separation. Circled spots were visualized under UV light (254 nm) after spraying with vanillin-sulfuric acid reagent (see *Section 3.1.* in Material and Methods). A: crude extract B3; B-C: fractions resulting from the MPLC separation of B3.