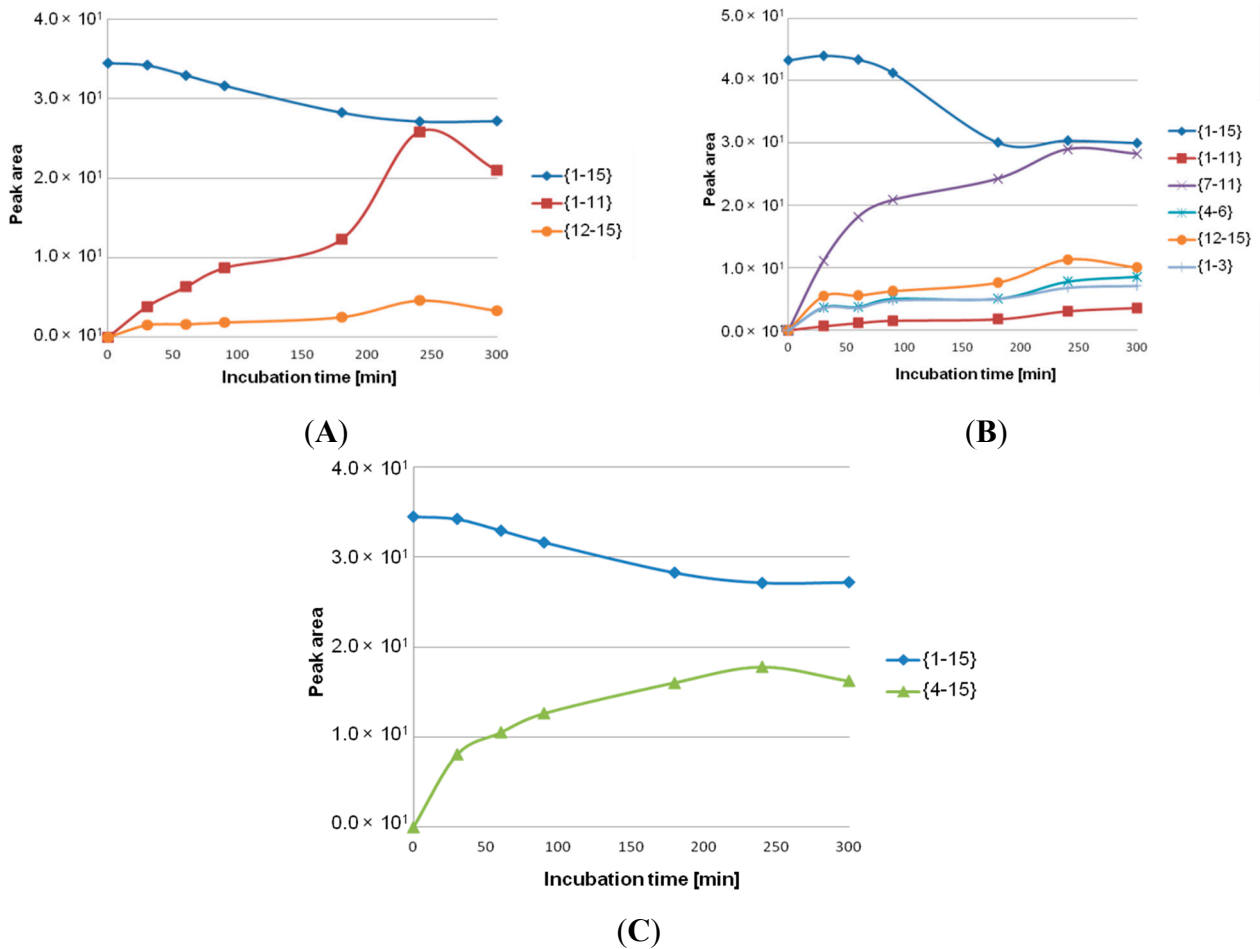
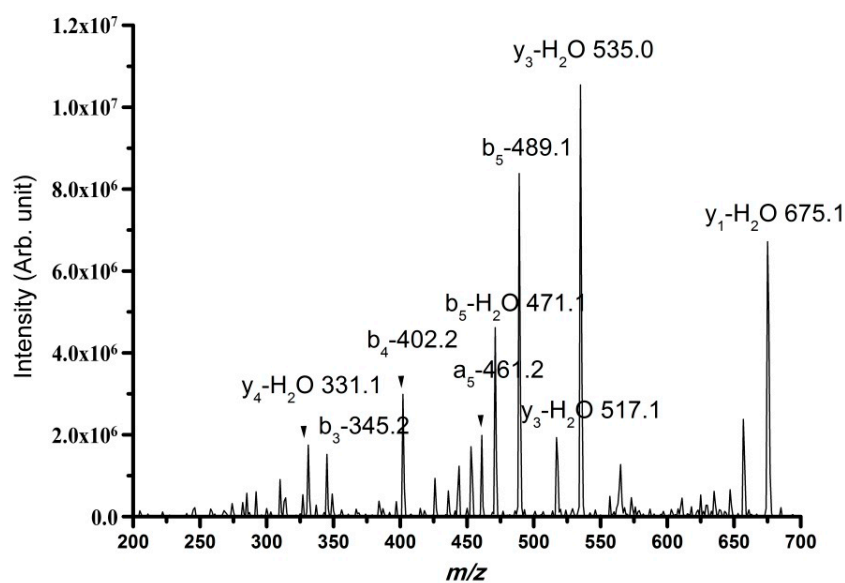


## Supplementary Information

**Figure S1.** Time dependent data: (A) Time dependent incubation of NPNA with enzymes from fraction number 23. The main product is created in the highest amount after 4 h, fragment 1–11 [NAWGPWSKEQL]; (B) Time dependent incubation of NPNA with enzymes from fraction number 26. The main product is fragment 7–11 [SKEQL]; (C) Time dependent incubation of NPNA with enzymes from fraction number 35. The only identified product is fragment 4–15 [GPWSKEQLSPQA].



**Figure S2.** MS/MS spectrum for the peak at  $m/z$  693.2, corresponding to peptide SAWGSW.



**Figure S3.** MS/MS spectrum for the peak at  $m/z$  1442.7, assigned to fragment WGPWSKEQLSPQ.

