

Supplementary Information

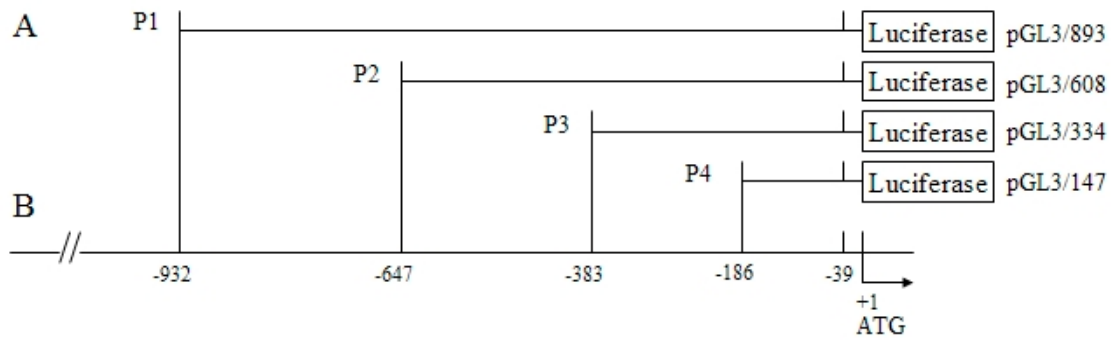


Figure S1. The primer design scheme for deletional analysis of the chicken *DAZL* gene promoter region.

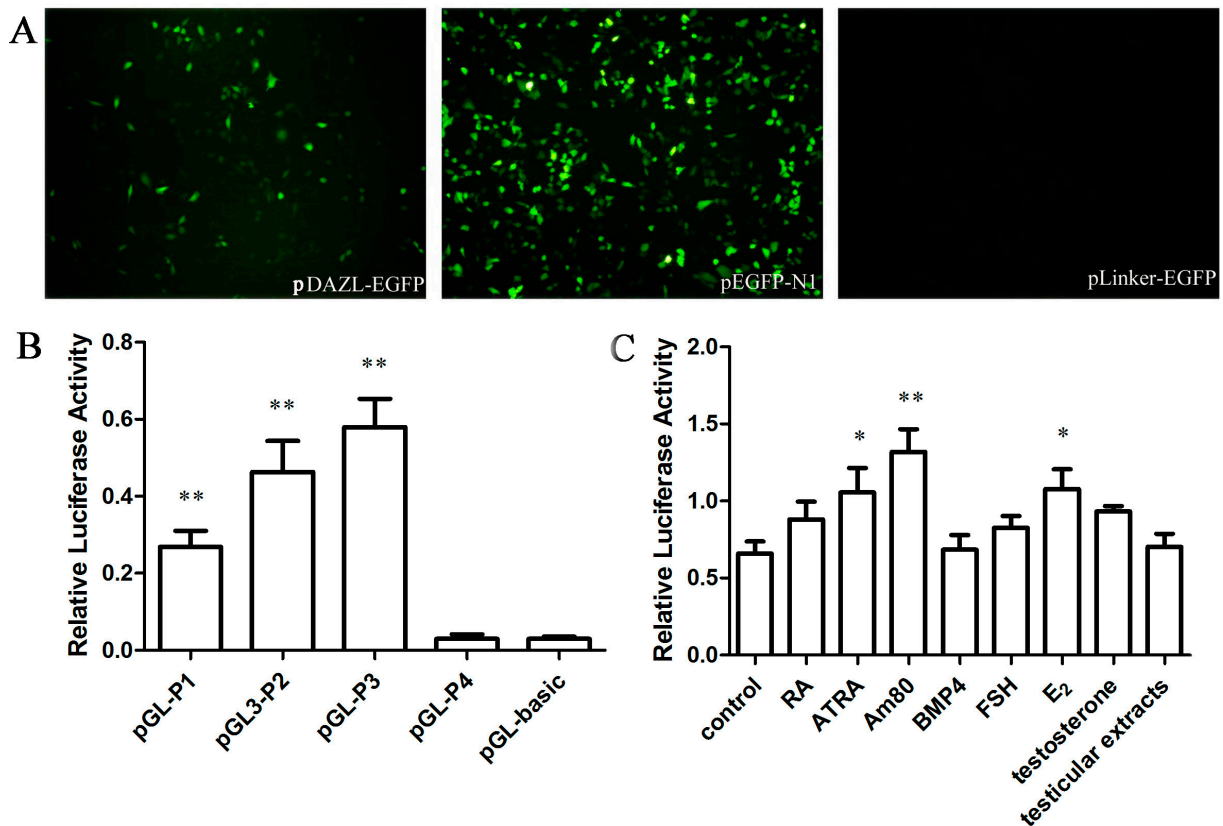


Figure S2. (A) The GFP detection of promoter activity of the chicken *DAZL* long promoter fragment in GC-1 cells transfected with positive control *pDAZL-EGFP*, *pEGFP-N1*, and negative control *pLinker-EGFP* (40× magnification); (B) The activity of different promoter regions of the chicken *DAZL* gene in GC-1 cells; (C) The effect of different inducers on the activity of the chicken *DAZL* core gene promoter in mouse GC-1 cells. * represents $p < 0.05$, ** represents $p < 0.01$.

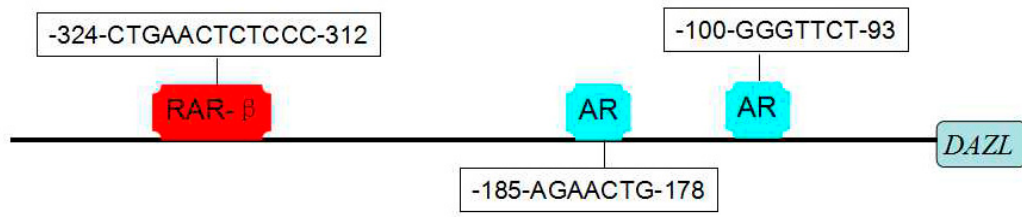


Figure S3. Prediction of regulatory elements binding sites at -383~-36 bp of chicken *DAZL* gene.