

Supplementary Material: miR-92a-3p Exerts Various Effects in Glioma and Glioma Stem-Like Cells Specifically Targeting CDH1/ β -Catenin and Notch-1/Akt Signaling Pathways

Hang Song, Yao Zhang, Na Liu, Sheng Zhao, Yan Kong and Liudi Yuan

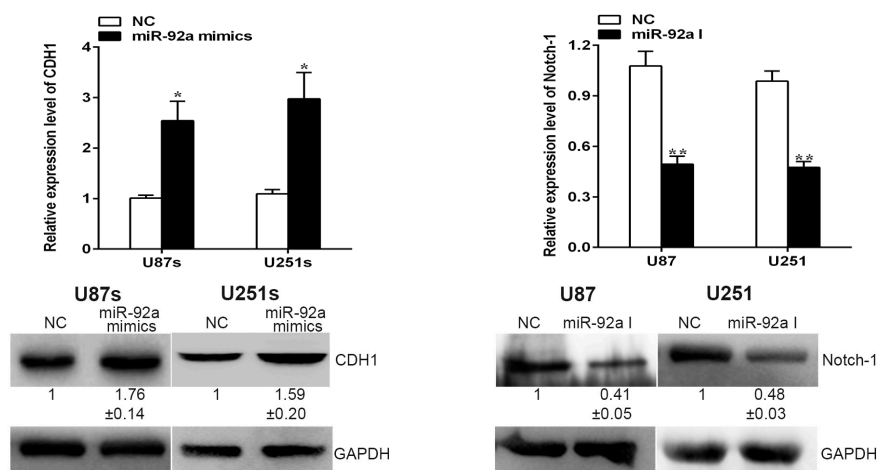


Figure S1. The mRNA and protein expression levels of CDH1 and Notch-1 were positively correlated with miR-92a in GSCs and glioma cells, respectively. * indicates $p < 0.05$, ** indicates $p < 0.01$.

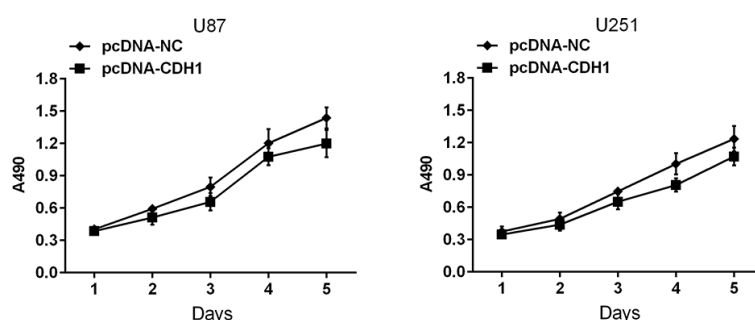


Figure S2. The effect of CDH1 on the proliferation of glioma cells in vitro.

Table S1. Top 10 miR-92a-3p's targets predicted by Targetscan and Microna.org. These genes are mostly involved in cell proliferation, migration, invasion, or self-renewal ability of stem cells.

MicroRNA	Gene ID	Gene
miR-92a-3p	1,0114	HIPK3
miR-92a-3p	1,0140	TOB1
miR-92a-3p	1028	CDKN1C
miR-92a-3p	999	CDH1
miR-92a-3p	1,0365	KLF2
miR-92a-3p	4581	NOTCH-1
miR-92a-3p	1,0579	TACC2
miR-92a-3p	109	ADCY3
miR-92a-3p	1008	CDH10
miR-92a-3p	1,0018	BCL2L11