

Supplementary Materials: Reduced Connexin26 in the Mature Cochlea Increases Susceptibility to Noise-Induced Hearing Loss in Mice

Xing-Xing Zhou, Sen Chen, Le Xie, Yu-Zi Ji, Xia Wu, Wen-Wen Wang, Qi Yang, Jin-Tao Yu, Yu Sun, Xi Lin and Wei-Jia Kong

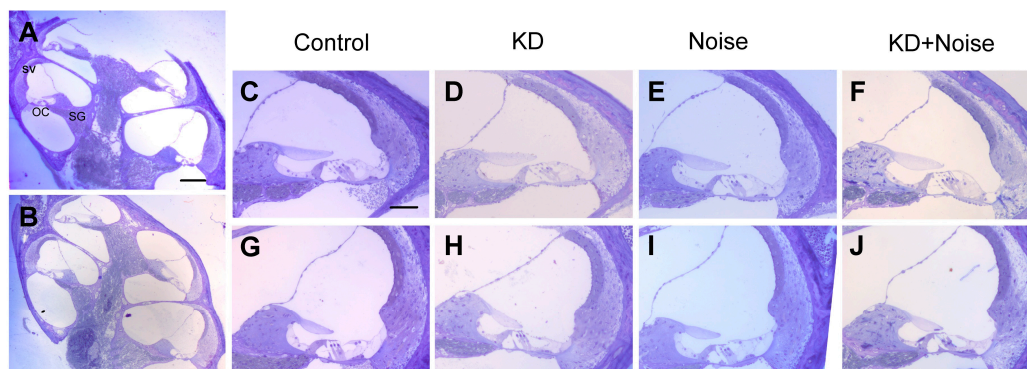


Figure S1. Cochlear morphology of the apical and middle turn in control, KD, noise and KN groups. A full view of a cochlea obtained from control (A) and KD group (B); Panels C, D, E and F show the morphology of the apical cochleae in control and experimental groups; Panels G, H, I and J show the middle cochleae in the control and experimental groups, respectively. The scale in panel A represents 200 μm , and scale in panel C represents approximately 40 μm . Abbreviations: SV: stria vascularis; OC: organ of Corti; SG: spiral ganglia.