

**Targeting Hodgkin and Reed-Sternberg cells with an inhibitor of heat-shock protein 90: Molecular pathways of response and potential mechanisms of resistance**

Priscilla Segges<sup>a</sup>, Stephany Corrêa<sup>b</sup>, Bárbara Du Rocher<sup>b,c</sup>, Gabriela Vera-Lozada<sup>a</sup>, Flavia Krsticevic<sup>a,d</sup>, Debora Arce<sup>d,e</sup>, Cinthya Sternberg<sup>f,g</sup>, Eliana Abdelhay<sup>b</sup>, Rocio Hassan<sup>a</sup>

<sup>a</sup>Oncovirology Laboratory, Bone Marrow Transplantation Center (CEMO), Instituto Nacional de Câncer (INCA), Rio de Janeiro, Brazil; <sup>b</sup>Laboratório Célula-Tronco, CEMO, Instituto Nacional de Câncer (INCA), Rio de Janeiro, Brazil; <sup>c</sup>Laboratório de Pesquisa sobre o Timo, FIOCRUZ, Rio de Janeiro, Brazil; <sup>d</sup>CIFASIS - Centro Internacional Franco Argentino de Ciencias de la Información y de Sistemas, Rosario, Argentina; <sup>e</sup>IIICAR-CONICET Instituto de Ciencias Agrarias de Rosario, Rosario, Argentina; <sup>f</sup>Laboratório de Pesquisa Translacional, Instituto Nacional de Câncer (INCA), Rio de Janeiro, Brazil; <sup>g</sup>current address: Programa de Pós-Graduação em Anatomia Patológica, Faculdade de Medicina da Universidade Federal do Rio de Janeiro, Brazil.

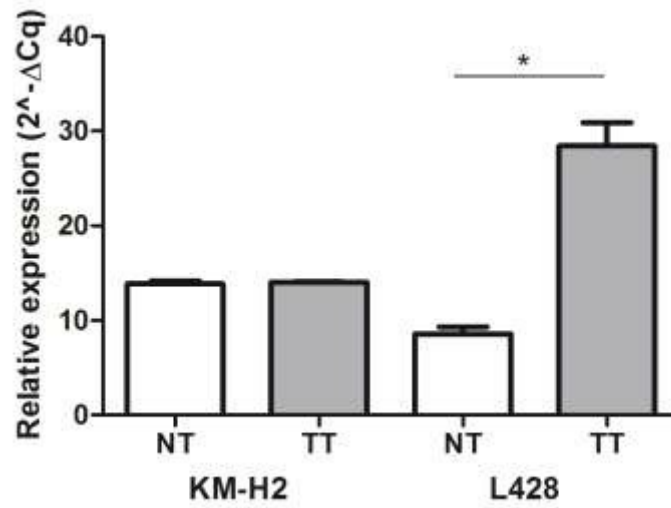
**CORRESPONDENCE TO:** Priscilla Segges.

Instituto Nacional de Câncer, Praça Cruz Vermelha, n° 23, 6° andar, ala C, CEMO, Laboratório de Oncovirologia, CEP: 20230130, Rio de Janeiro, RJ, Brazil.

Telephone: 5521-3207-1874 Fax: 5521-3207-2121

Email: psegges@inca.gov.br

### Supplementary Figure S2



**Figure S2:** Analysis of *HSP27* mRNA expression. NT: untreated and TT: treated. Bars represent standard error. \*  $P < 0.001$  (Student t test).