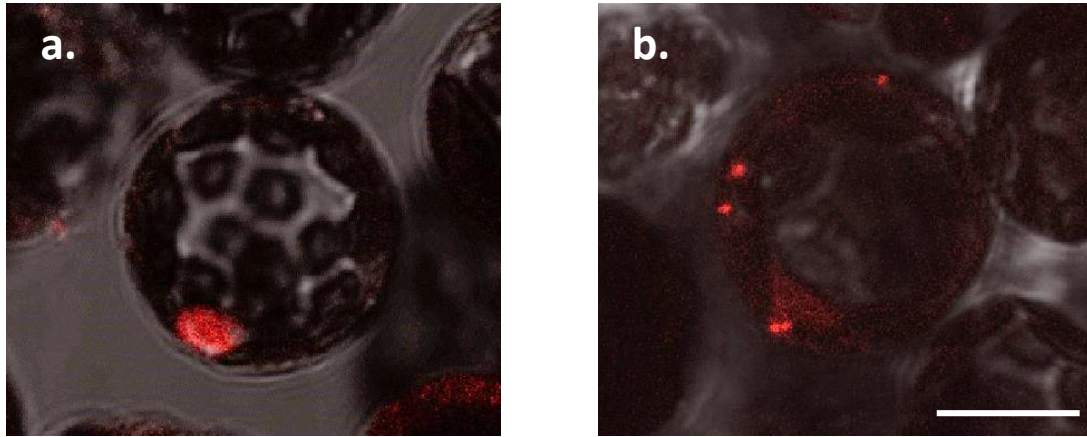
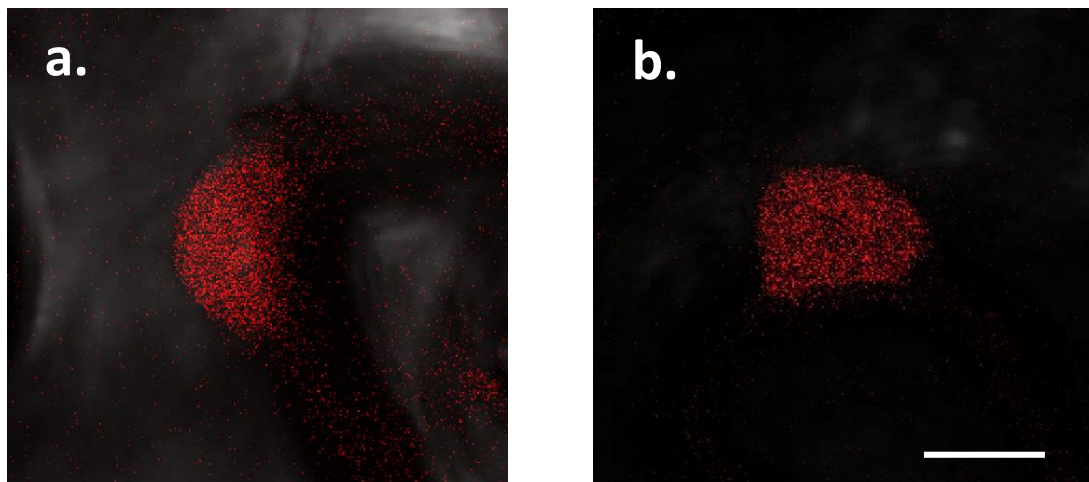


**Supplemental figure S1. Plasmids used in the study for dsT-DNA imaging.**  
 (a) pCambia 15mRL (b) p2alpha1 LacO (c) p2omega1 LacO eYFP.



**Supplemental figure S2. Plasmid DNA detection with the LacO-LacI system in *N. benthamiana* protoplasts.** Protoplasts were isolated from mRFP-LacI expressing *N. benthamiana* seedlings, subjected to PEG transformation and imaged 16 hours after transformation. (a) A single protoplast transformed with a double-stranded control plasmid lacking the lacO array ; (b) A single protoplast transformed with the LacOx256 double-stranded plasmid p2alpha1 LacO (Supplemental image S1b), Scale bar: 10µm.



**Supplemental figure S3. Time course of T-DNA foci detection in *N. benthamiana*.** Leaves stably expressing the mRFP-LacI protein were infected via infiltration using *Agrobacterium* strain GV3101 containing a control Ti-plasmid lacking the LacO array. (a) 50 hours post infiltration; (b) 72 hours post infiltration. Scale bar: 10 $\mu$ m.