

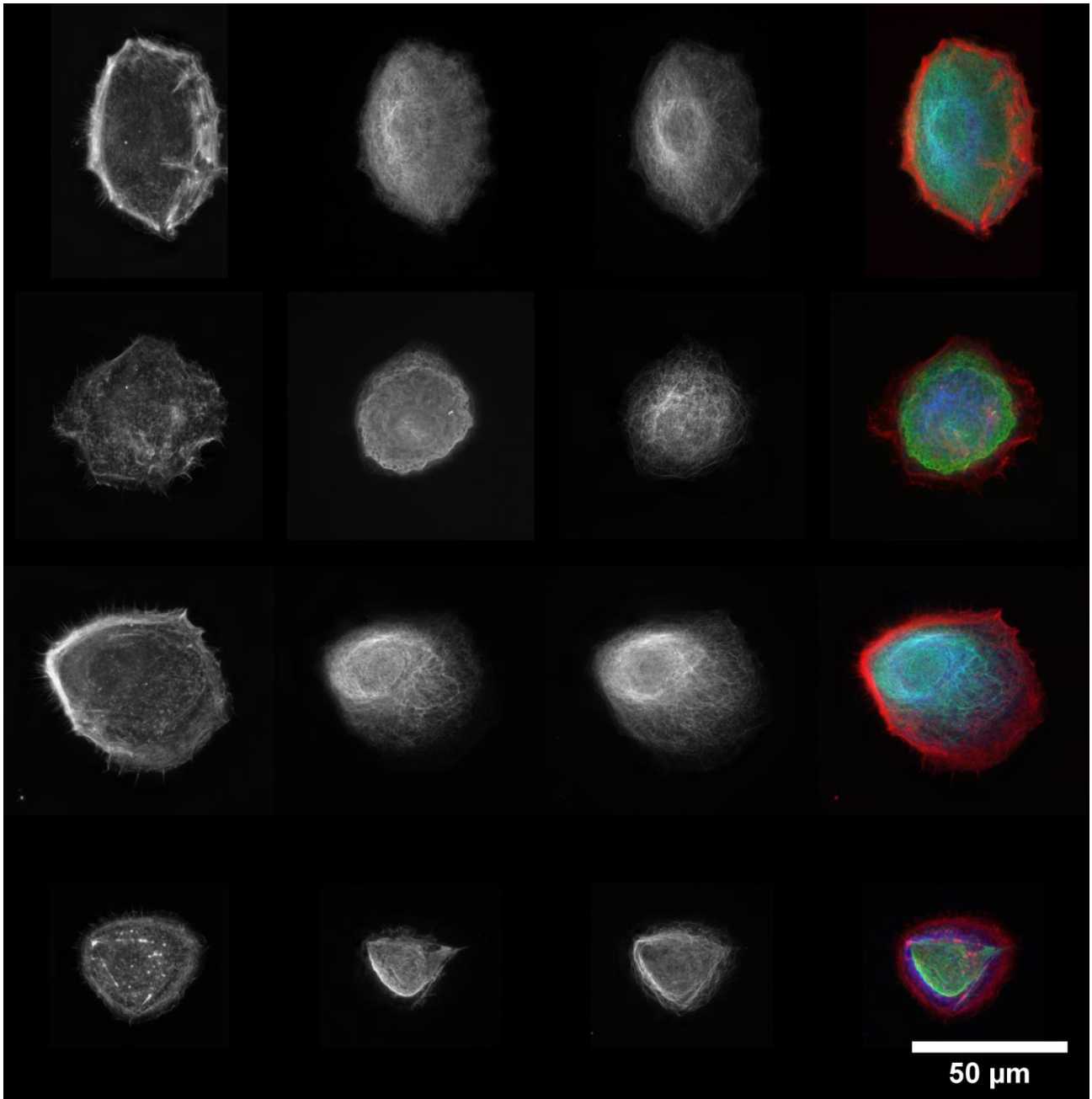
Actin**Keratin****Tubulin****Merge**

Figure 1. Individual CSKs and merge for control and 0.5-3 μ M WFA.

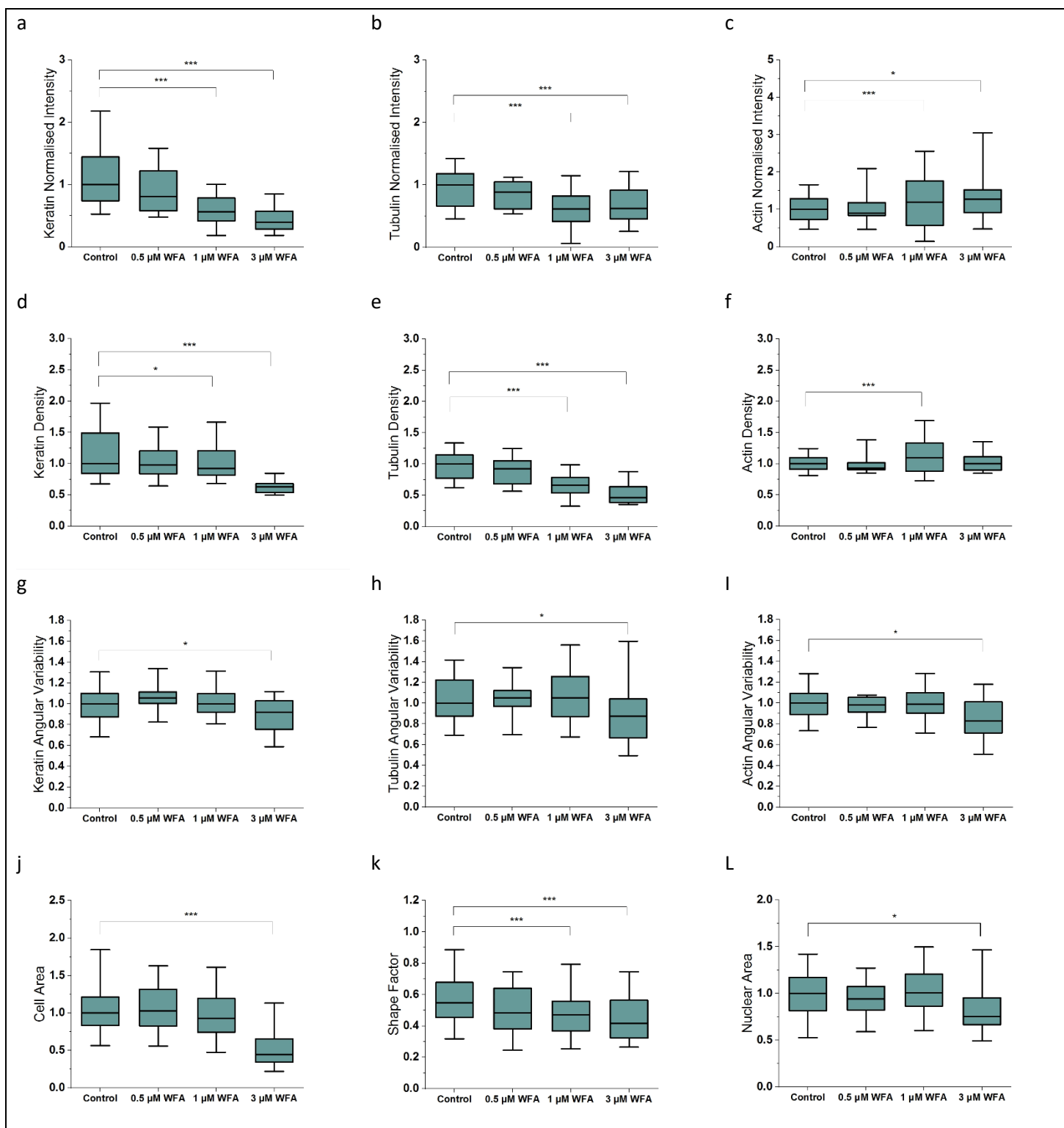


Figure 2. a-c CSK Intensity Normalised by Cell Area changes with WFA, d-f, CSK Network Density changes with WFA, g-l, CSK angular variability changes with WFA, j, Cell Area, k, shape factor and l, Nuclear Area change with WFA.

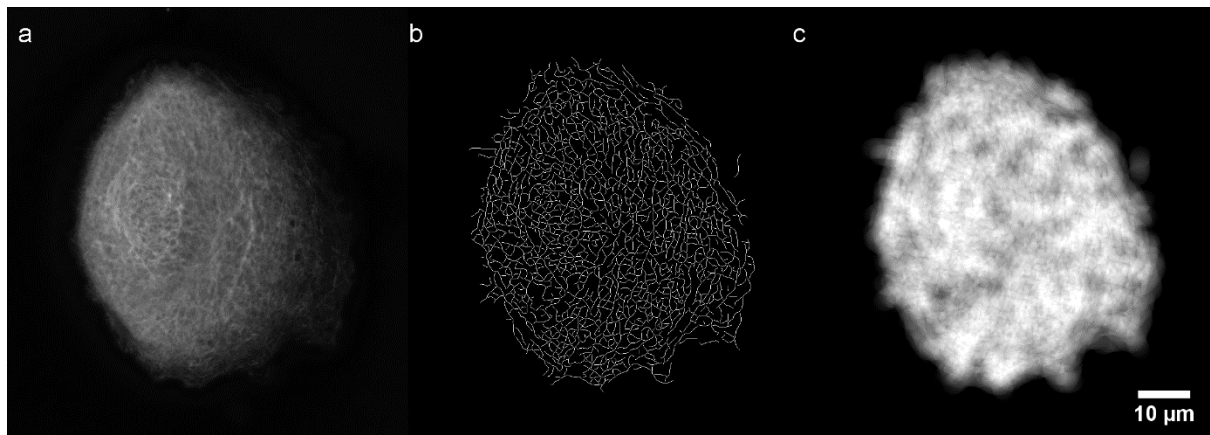


Figure 3. (a) Keratin Intensity image, (b) result of filament segmentation, (c) Self Proximity score using a disk-shaped filter. The mean of the score within the cell boundary gives the network density.

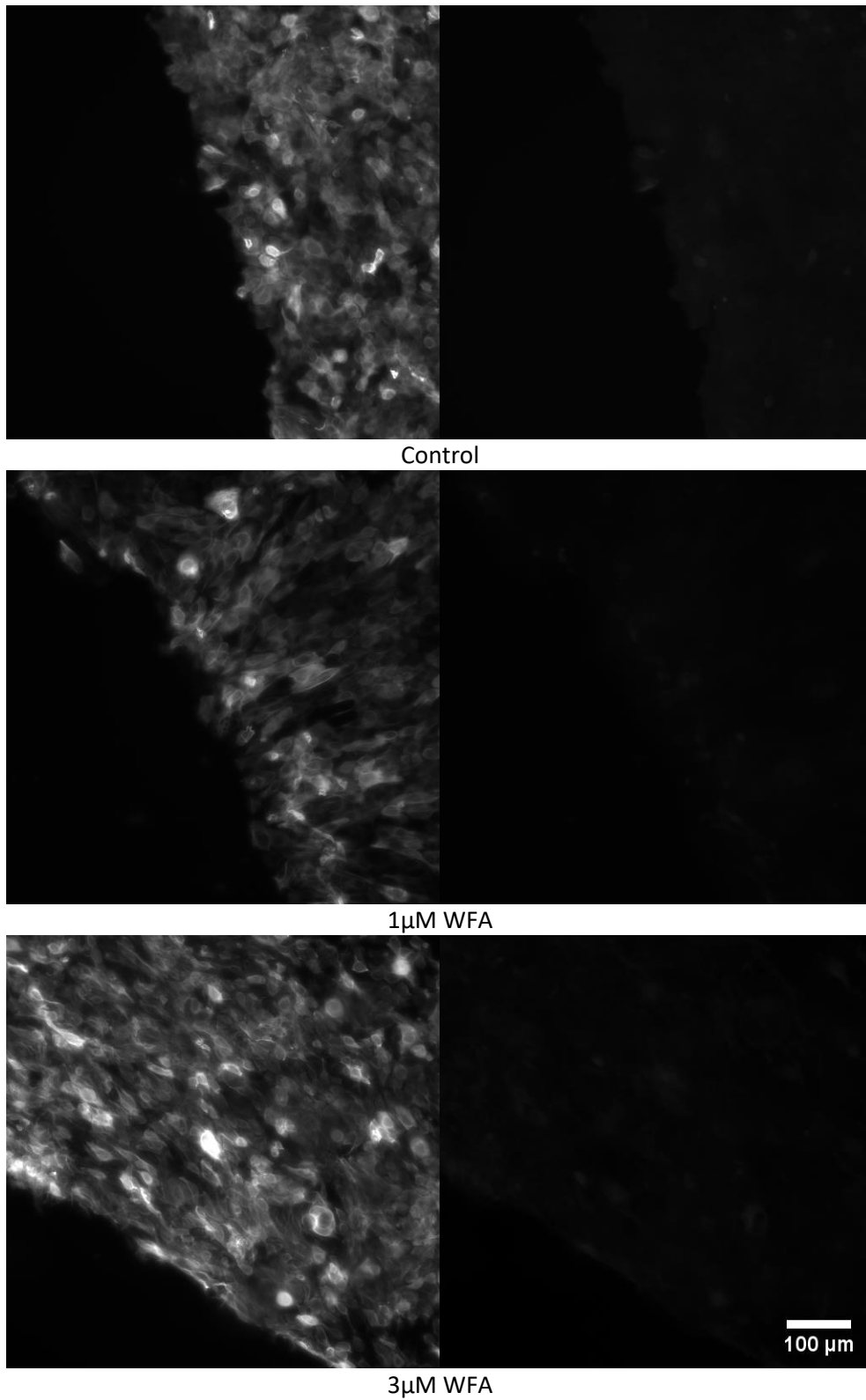


Figure 4. HaCaT cells with GP-K14 (left, exposure time=0.14 seconds) stained for vimentin (right, exposure time=1.8 seconds). Magnification 20x.