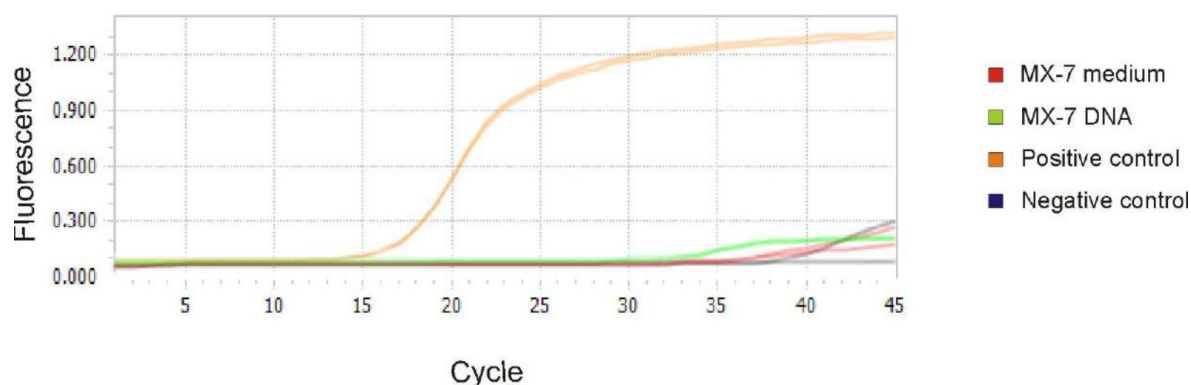
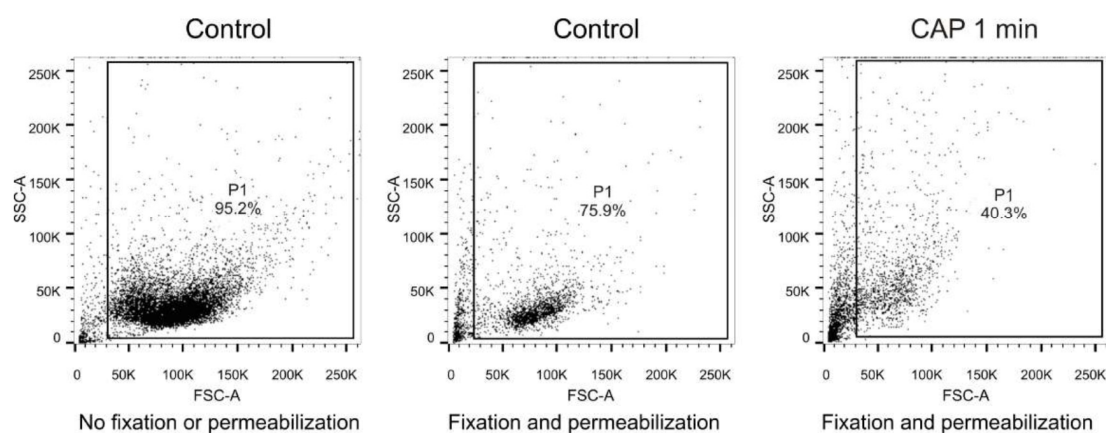


Mycoplasma test of MX-7 cells



Supplementary 1. Mycoplasma test of MX-7 cells. Reverse transcription polymerase chain reaction (RT-PCR) analysis was performed on Light Cycler 96 (Roche, Roche Diagnostics International, Switzerland) and used common models and algorithms for analysis of real-time PCR data with corresponding equipment software. RT-PCR was performed in the one-tube reaction mixture BioMaster RT-PCR SYBR Blue (Biolabmix Ltd., Novosibirsk, Russia, www.biolabmix.ru) with gene-specific primers: Myc-f: 5'GGCGAATGGGTAAGTAACACG3' and 5'CGATAACGCTTGCGACCTAT3'. These primers detected various Mycoplasmas and *Ureaplasma urealyticum*.



Supplementary 2. Analysis of MX-7 control and plasma-treated cells by flow cytometry in SSC/FSC graphs. These graphs were used to gate live cell population (P1) and to exclude debris.