

Figure S1: Basal MetAp2 expression in LECs compared with VECs. Western blot analyses for determining the expression of MetAp2 in HUVECs (VECs) and HMVEC-dLyAd (LECs) cells. qRT-PCR was used to quantify the MetAp2 mRNA levels in both cell lines revealing that the lymphatic cells expressed about 60% of the corresponding mRNA levels in VECs

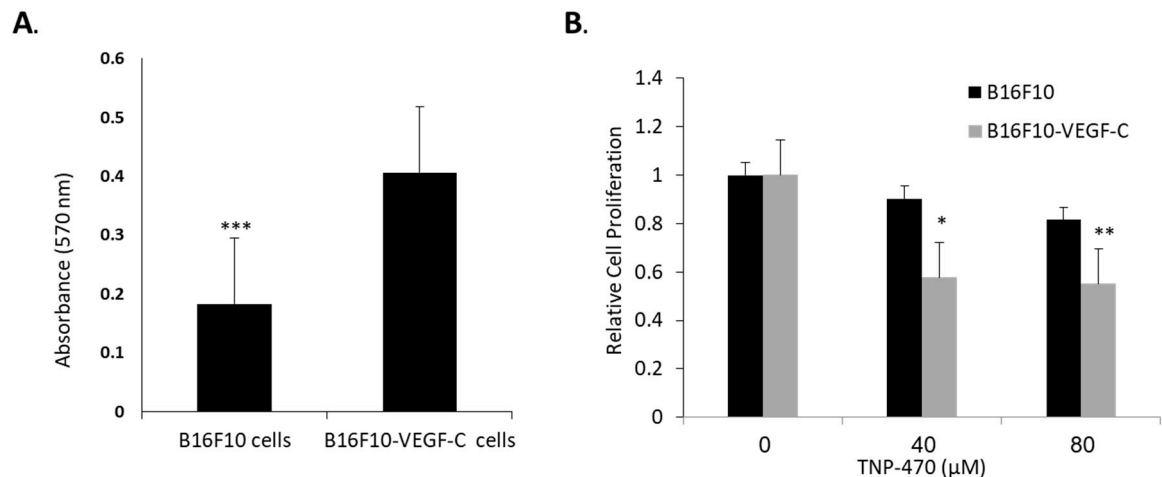


Figure S2: Relative cell division rate of B16F10 and B16F10-VEGF-C cells. (A) B16F10 and B16F10-VEGF-C cell proliferation was investigated after 72 h of incubation using an MTT assay. B16F10-VEGF-C cells show ~50% increase in cell proliferation compared with B16F10 cells. $n=7$. *** $p<0.005$. (B) Cells were treated with 0, 40 and 80 μM of TNP-470 for 72 h after which an MTT assay was conducted to quantify their relative proliferation. B16F10-VEGF-C cell proliferation is significantly reduced with 40 and 80 μM treatment of TNP-470 compared with B16F10 cells (~25-30% reduction). $n=6-7$. * $P<0.05$, ** $P<0.01$. Results are presented as mean \pm SEM.