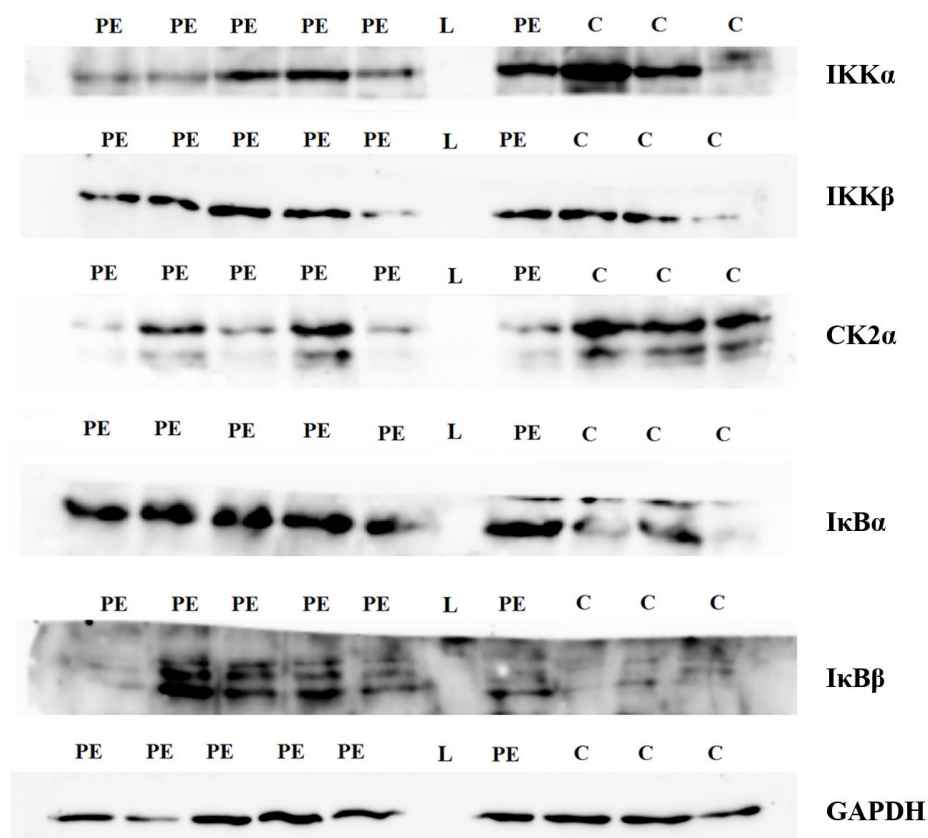


Supplementary Figures – Sakowicz et al.



Supp. Fig. S1. Activators and inhibitors of NFκB in Western blot visualisation. Total protein fraction isolated from preeclamptic and control placentas were separated on the SDS-PAGE. After electrophoresis and semi-dry transfer, the PVDF membranes were divided according to the protein ladder. Each fragment was blocked and, in the next step, incubated with the one of the following antibodies: IKKα, IKKβ, CK2α, IκBα, IκBβ and GAPDH. The monoclonal anti-GAPDH antibody was used as internal control. PE – preeclampsia; C – control samples, L – line reserved for protein ladder.