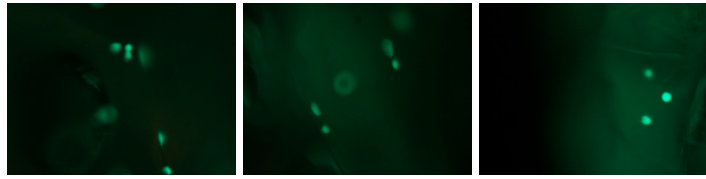
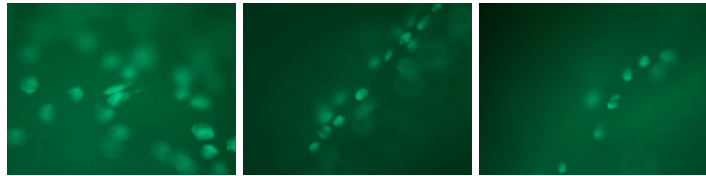


Membrane + bioadhesive
Specimen 1



Membrane + bioadhesive
Specimen 2



Supplemental Figure S1. L929 cells grown on the laser-welded membrane + bioadhesive. Vital and dead cells show green and red fluorescence, respectively. Three different areas of each of two specimens of the laser-welded membrane are shown to demonstrate that the cells are attached and alive in different focal planes of the membrane.