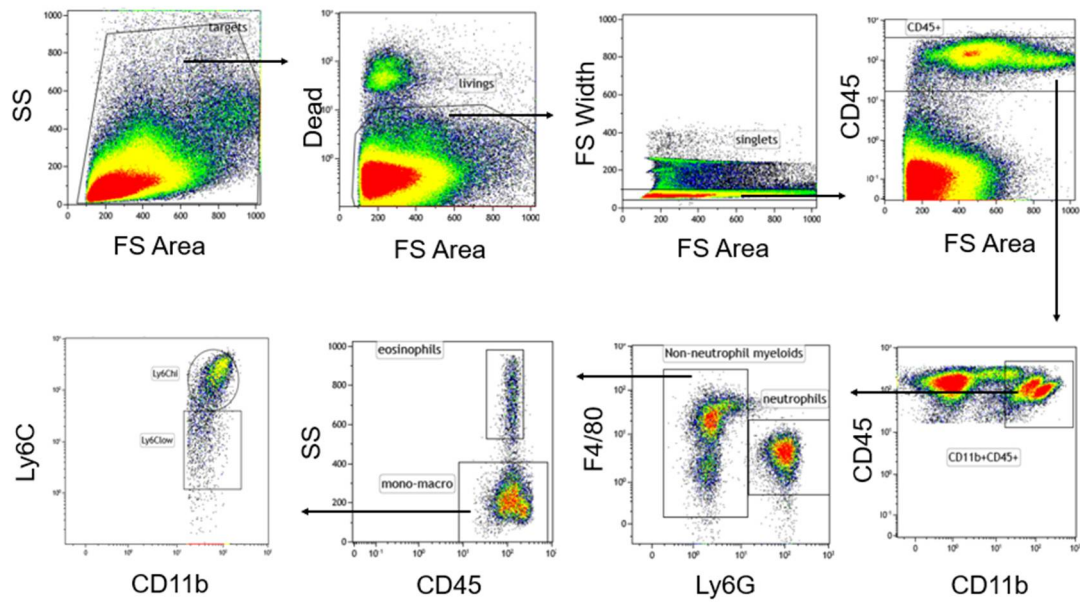
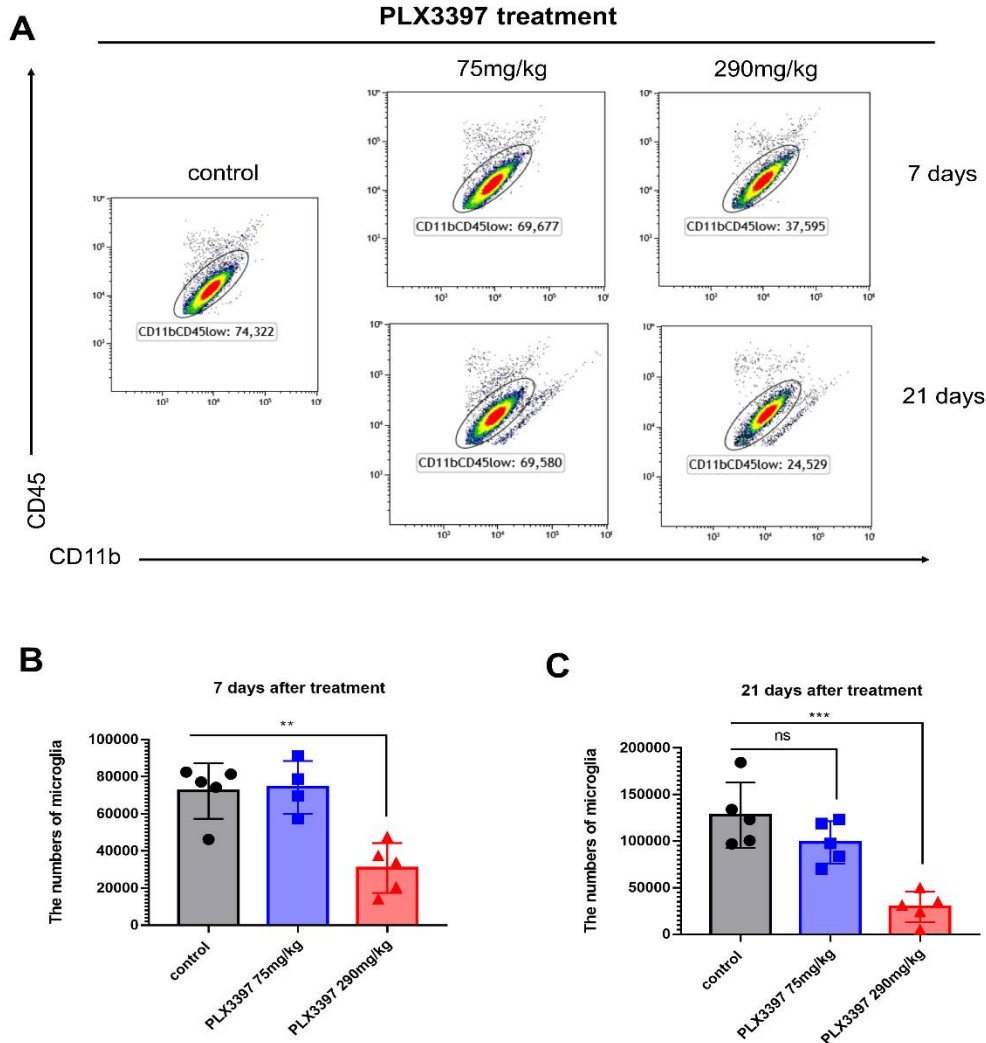


Supplementary Figure S1: Splenic flow cytometry gating strategy.

Gating strategy



Supplementary Figure S2: Gating strategy of monocytes in the circulation.



Supplementary Figure S3: Lower dose of PLX3397 treatment fails to effectively deplete microglia. (A) Representative flow cytometry plots of CD11b⁺CD45^{low}Ly6C⁻Ly6G⁻ microglia of the hemi-brains in *C57BL/6NTac* mice following consecutive PLX3397 diet (7 and 21 days) with two distinct doses of 75mg/kg and 290mg/kg, respectively. Control mice were treated with normal diet. (B) Total CD11b⁺CD45^{low}Ly6C⁻Ly6G⁻ microglial counts (\pm SEM) of the hemi-brains 7 days following PLX3397 treatment (control, black bars; PLX3397 treatment with the dose of 75mg/kg, blue bars; PLX3397 treatment with the dose of 290mg/kg, red bars). (C) Total CD11b⁺CD45^{low}Ly6C⁻Ly6G⁻ microglial counts (\pm SEM) of the hemi-brains 21 days following PLX3397 diet with a dose of 75mg/kg (control, black bars; PLX3397 treatment with the dose of 75mg/kg, blue bars; PLX3397 treatment with the dose of 290mg/kg, red bars). Statistical significance is indicated as * $p < 0.05$, ** $p < 0.01$ and *** $p < 0.001$.