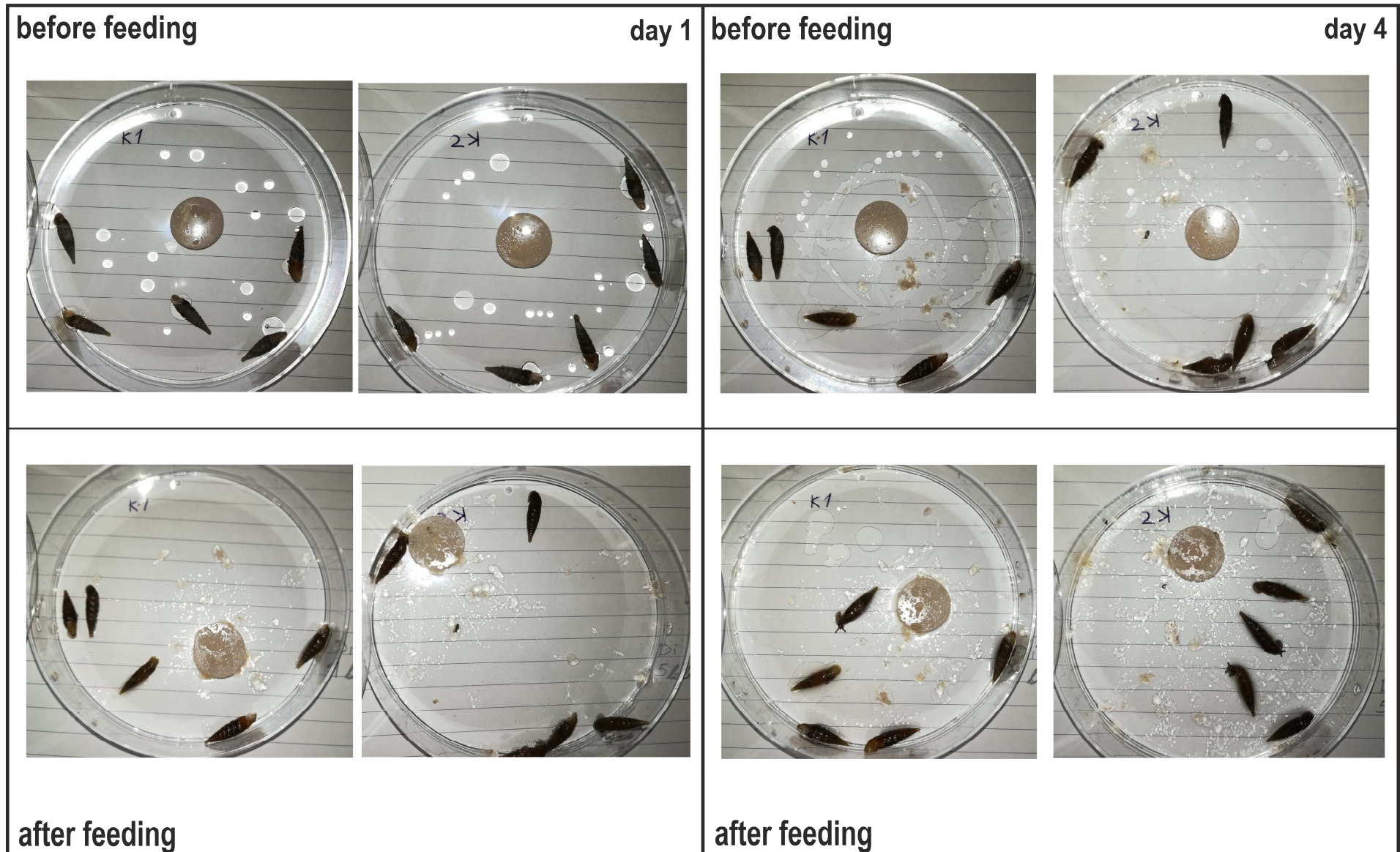


Figure S1: Documented feeding behaviour of controls (A) and snails exposed to increased concentrations of Cadmium (B - Cd1[38 μ g/g Cd]; C - Cd10[355.3 μ g/gCd]; D - Cd25[804.5 μ g/gCd]; E – Cd100[2692.6 μ g/gCd]; F – Cd200[6396.1 μ g/gCd]). Per treatment group two petridishes with five individuals each were used.

A - Controls



B - Cd1

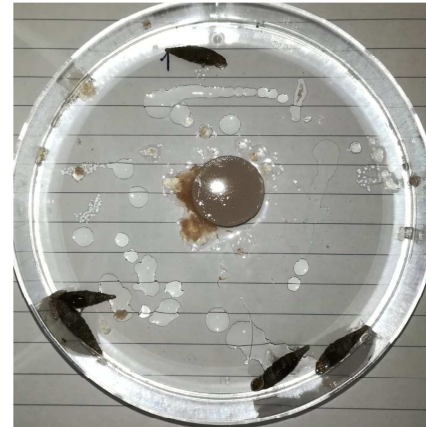
before feeding



day 1



before feeding



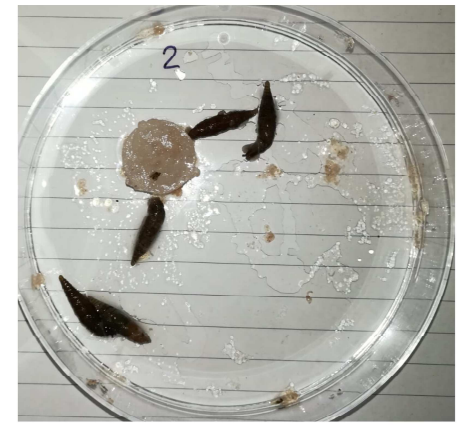
day 4



after feeding



after feeding



C - Cd10

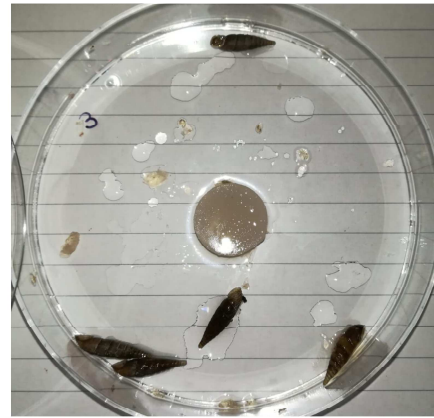
before feeding



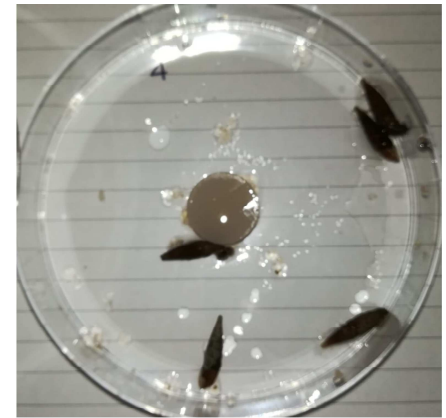
day 1



before feeding



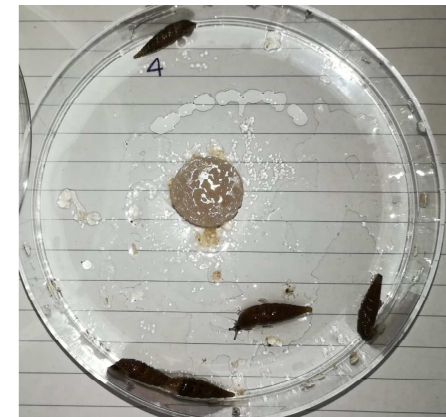
day 4



after feeding



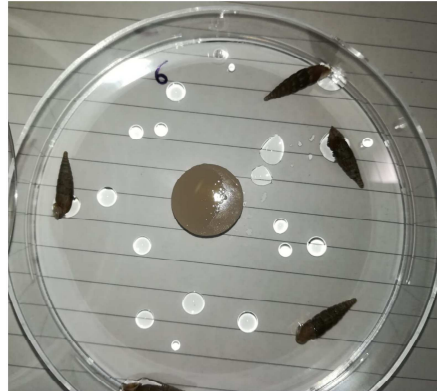
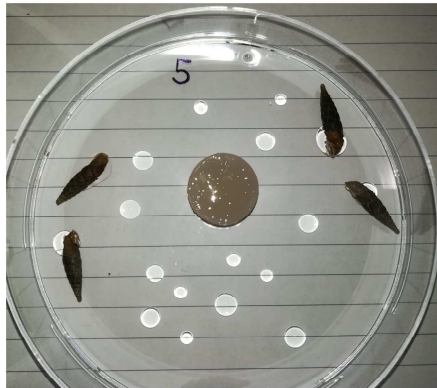
after feeding



D - Cd25

before feeding

day 1



before feeding

day 4



after feeding

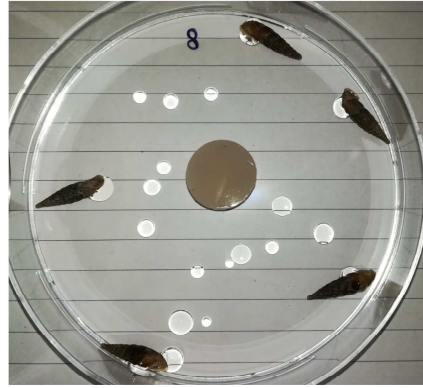
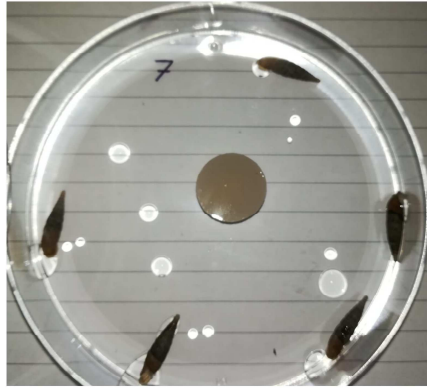


after feeding

E - Cd100

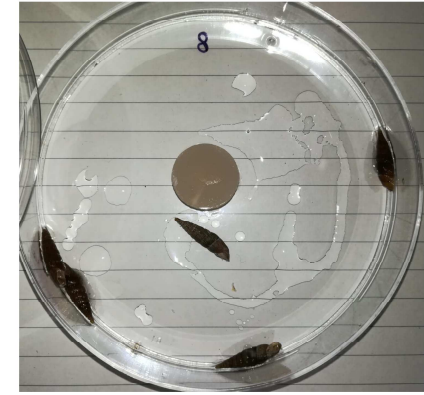
before feeding

day 1



before feeding

day 4



after feeding

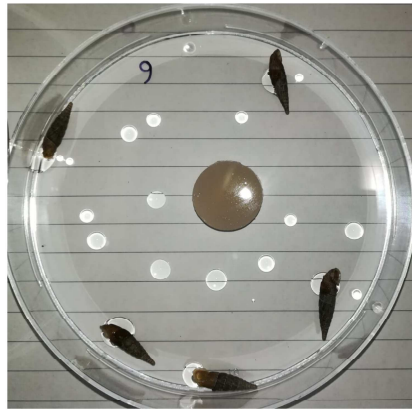


after feeding

F - Cd200

before feeding

day 1



before feeding

day 4



after feeding

after feeding



