

Figure 6 A: 16S – 18S rRNA gene

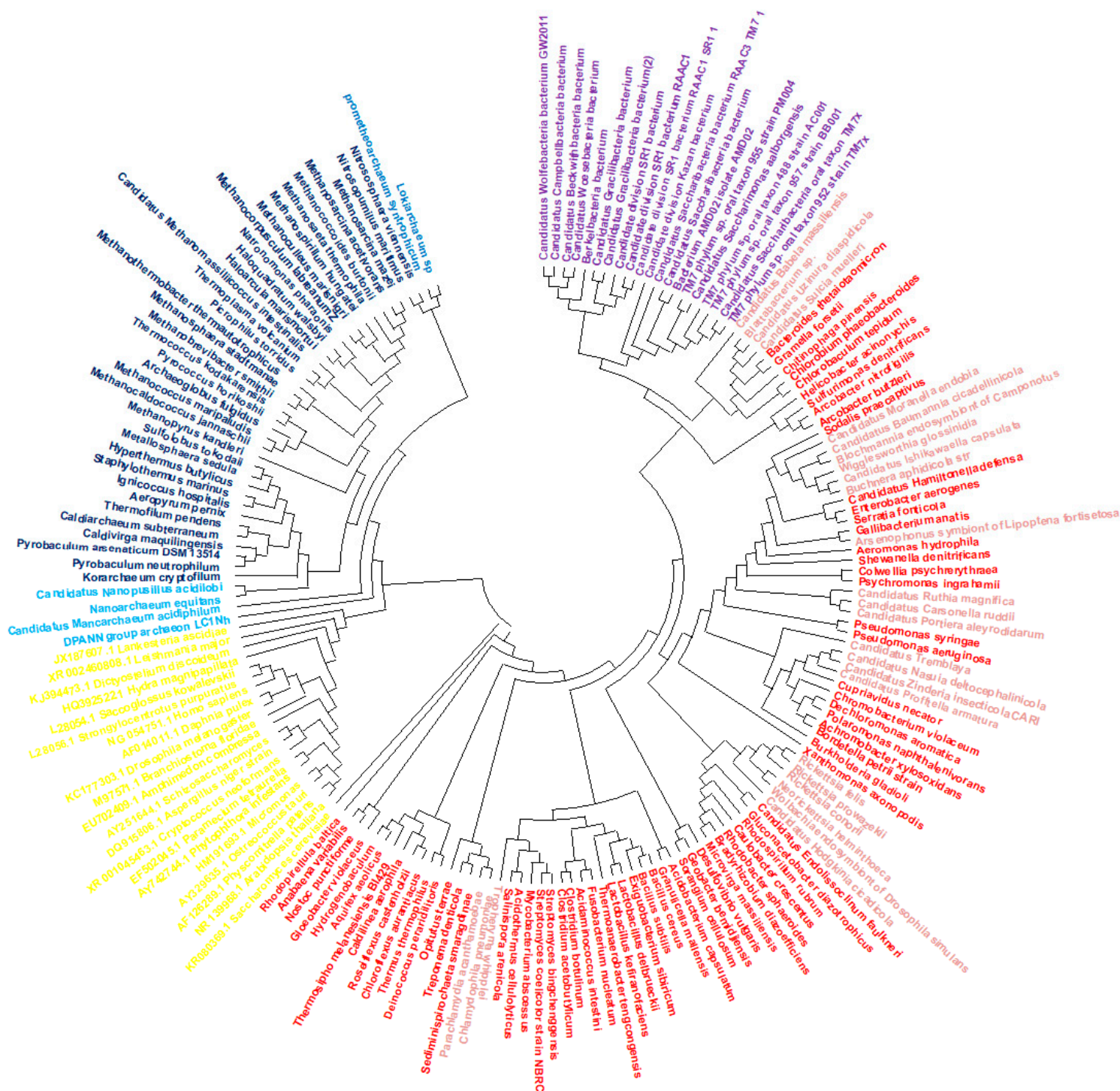


Figure 6 B: 23S – 28S rRNA gene



Figure 6 C: DNA Polymerase gene

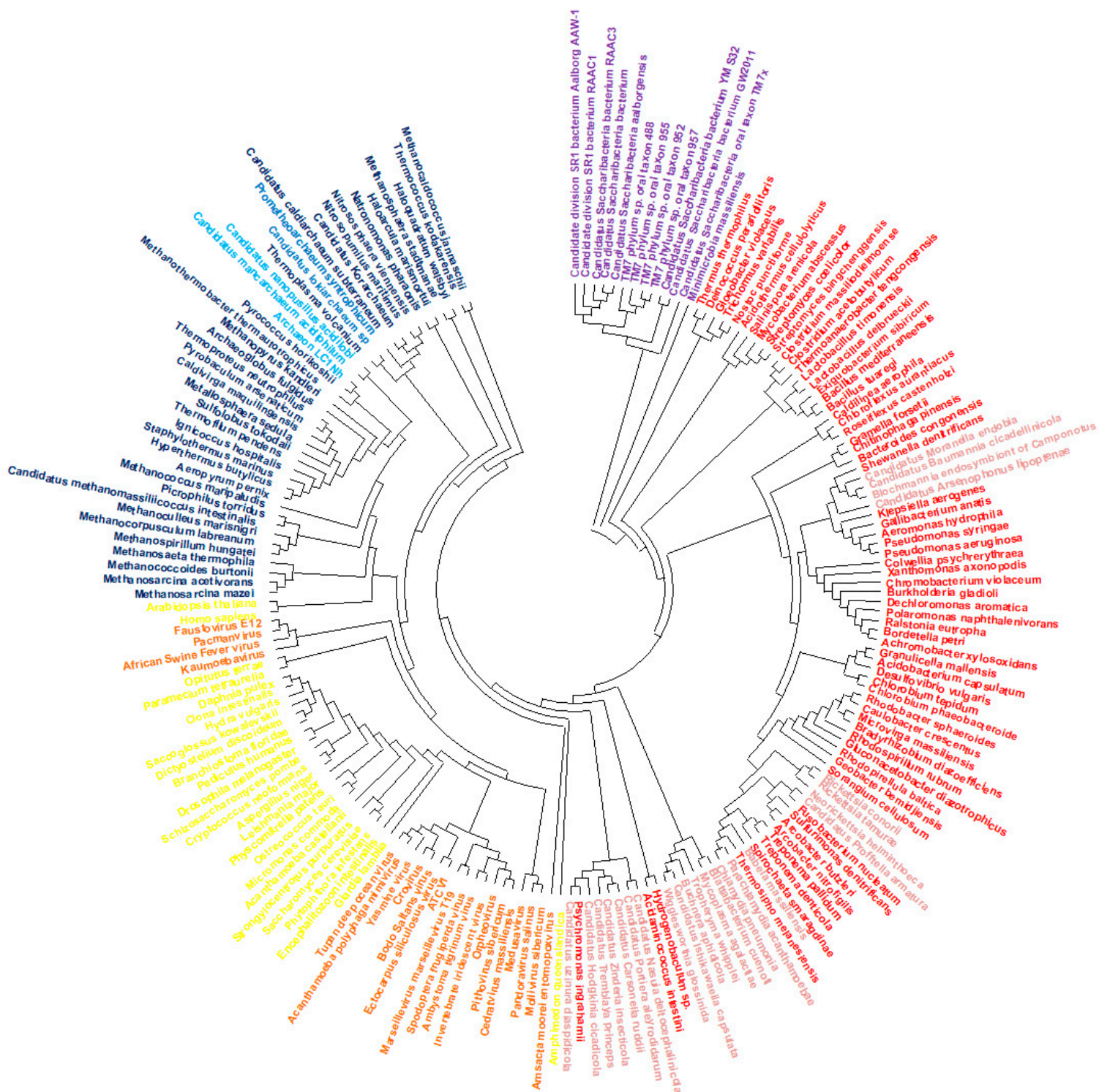


Figure 6 D: DNA-dependent RNA polymerase subunit II

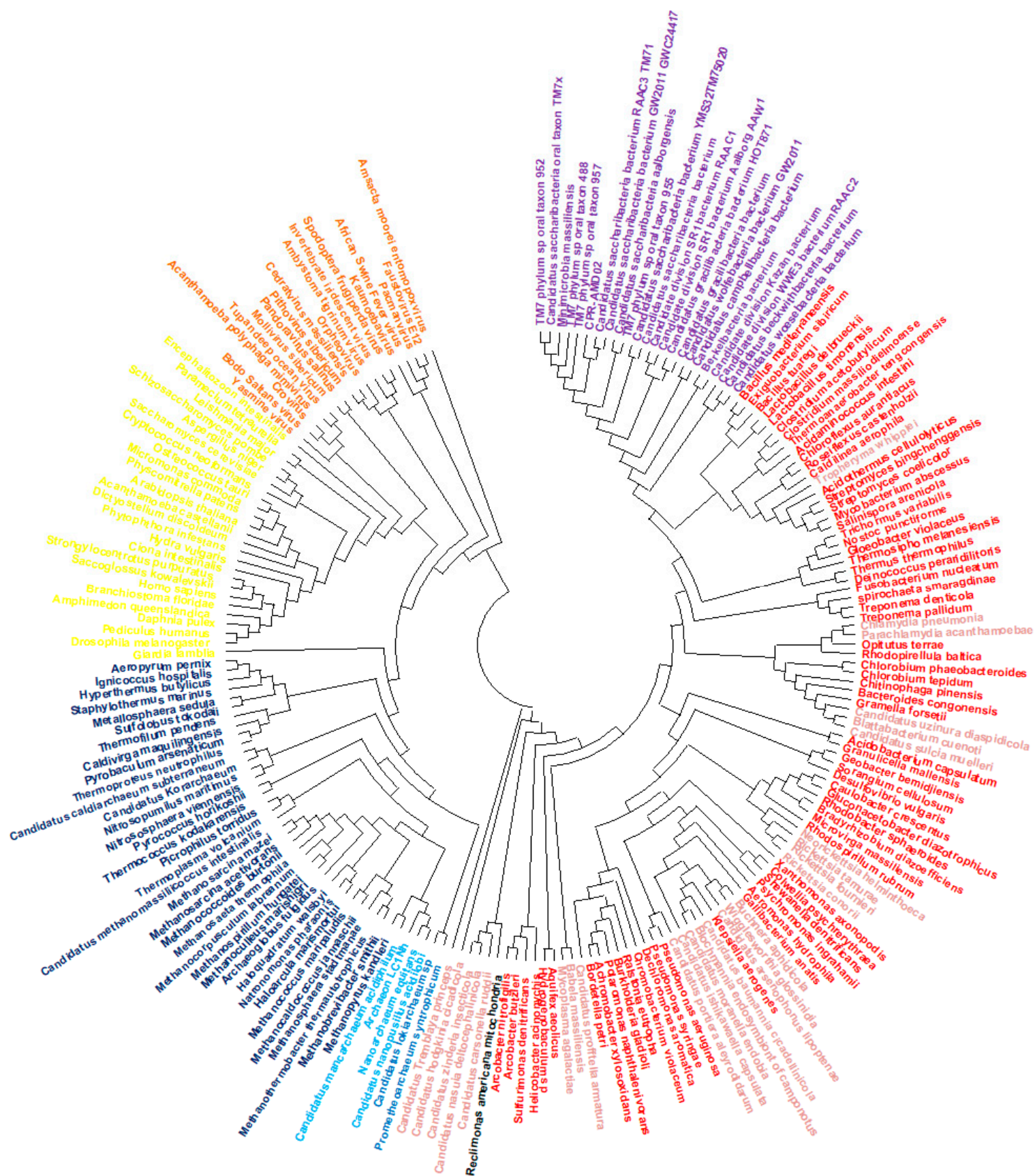


Figure 6 F: Ribonucleotide reductase

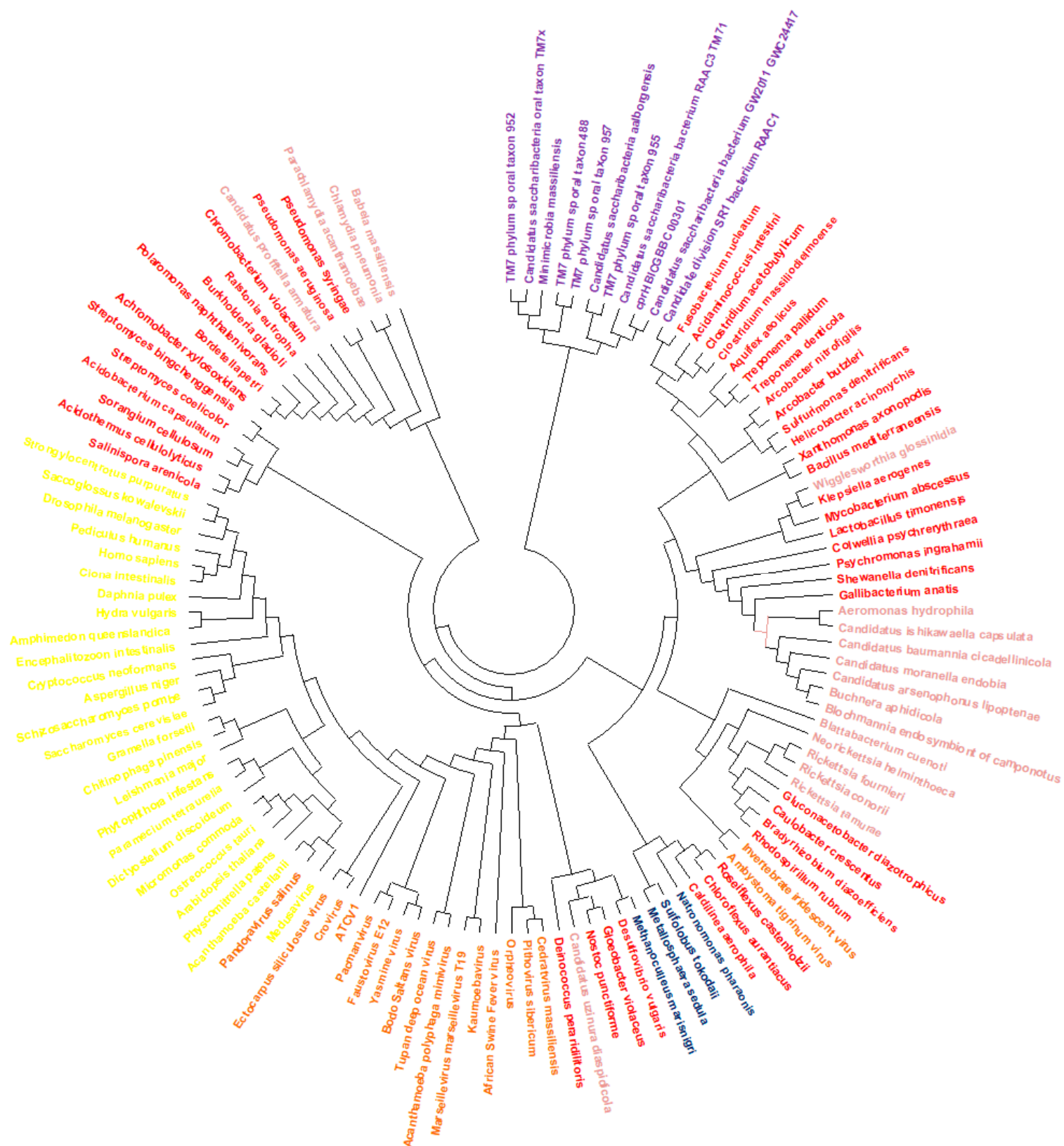


Figure 6 G: Thymidine synthase

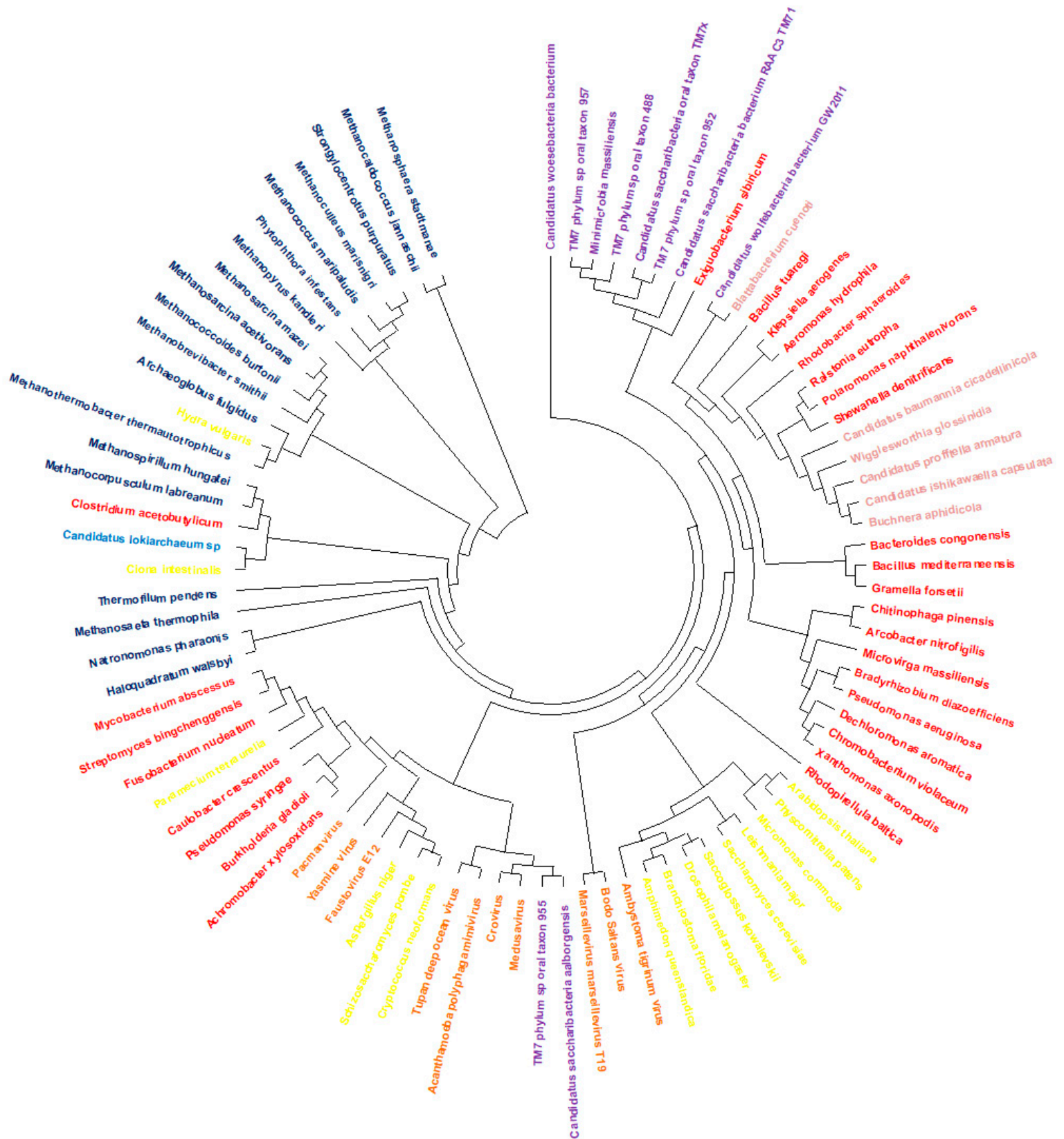


Figure 6 H: Topoisomerase IIA

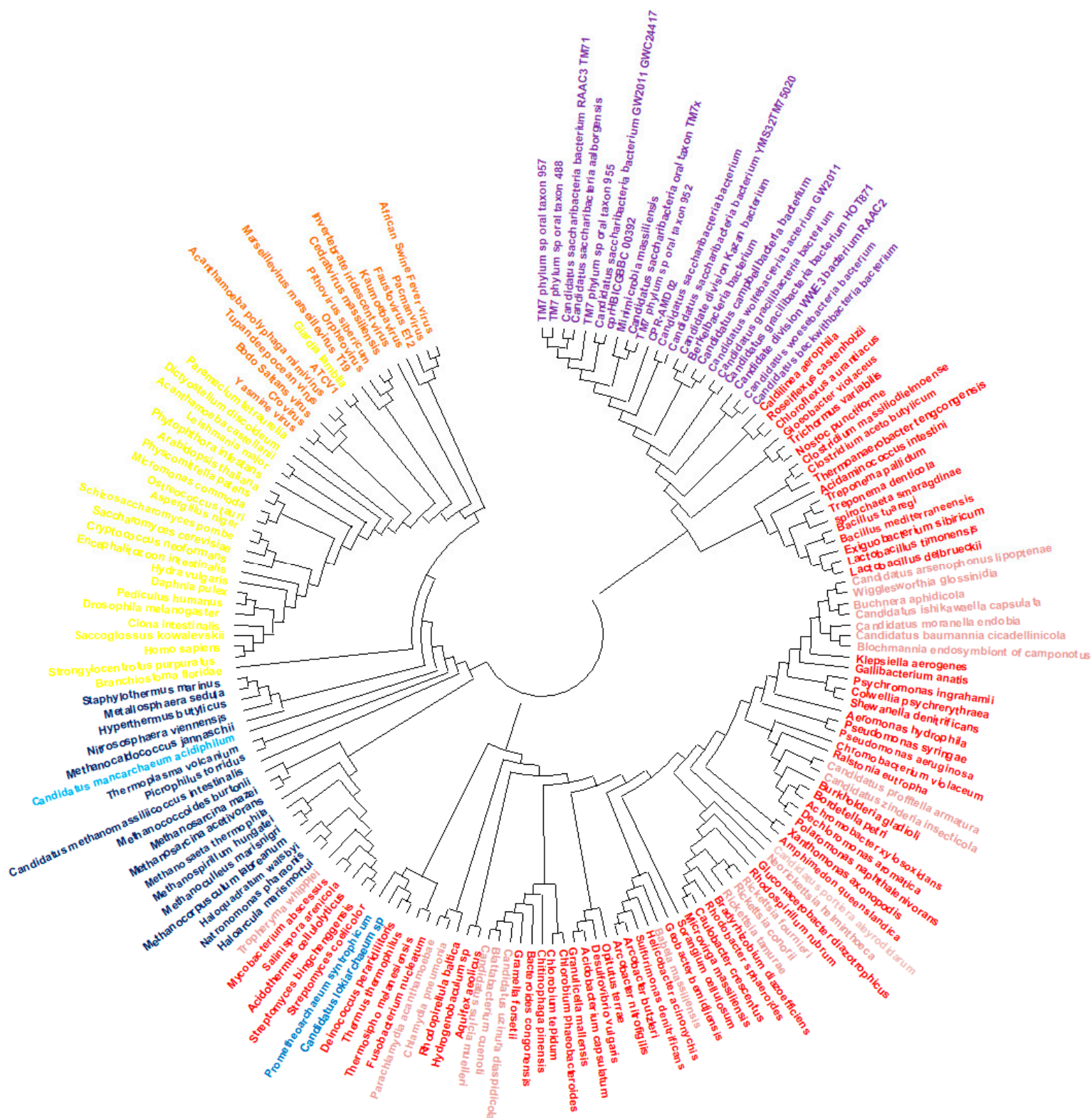


Figure 6 I: Flap endonuclease I

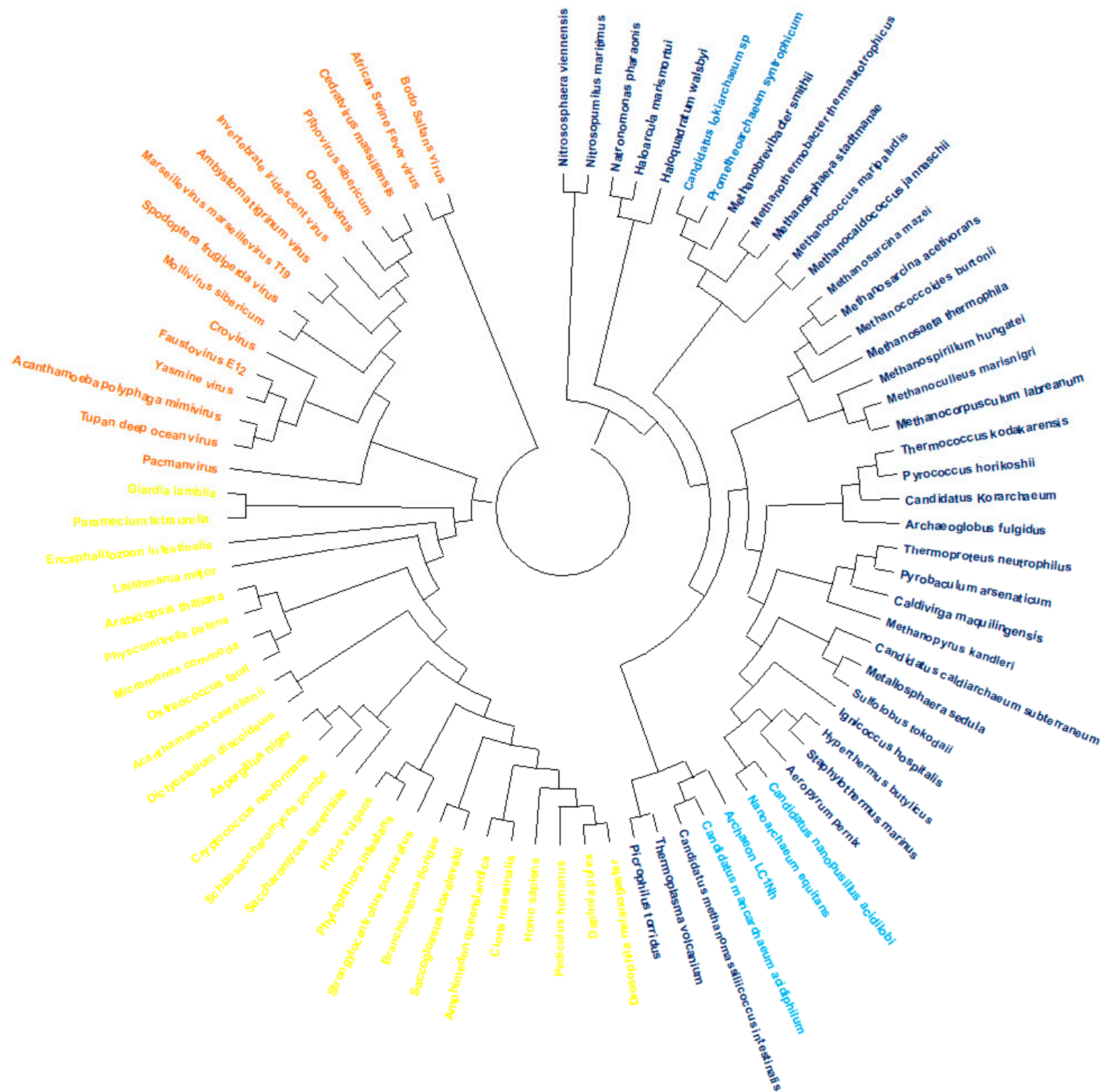


Figure 6 J: Proliferating Cell Nuclear Antigen

