

Reconfigurable Dual Peptide Tethered Polymer System Offers a Synergistic Solution for Next Generation Dental Adhesives

*Esra Yuca¹, Sheng-Xue Xie², Linyong Song³, Kyle Boone⁴, Sarah K. Woolfolk⁵, Nilan J.B. Kamathewatta⁶, Philip Elrod⁷, Paulette Spencer⁸, and Candan Tamerler⁹, **

¹ IBER Institute for Bioengineering Research, University of Kansas (KU), 1530 W. 15th St, Lawrence, KS 66045, USA; Department of Molecular Biology and Genetics, Yildiz Technical University, Istanbul, 34210, eyuca@yildiz.edu.tr

² IBER Institute for Bioengineering Research, University of Kansas (KU), 1530 W. 15th St, Lawrence, KS 66045, USA; sxie@ku.edu

³ IBER Institute for Bioengineering Research, University of Kansas (KU), 1530 W. 15th St, Lawrence, KS 66045, USA; leonsong@ku.edu

⁴ IBER Institute for Bioengineering Research, University of Kansas (KU), 1530 W. 15th St, Lawrence, KS 66045, USA; k097b443@ku.edu

⁵ IBER Institute for Bioengineering Research, Bioengineering Program, University of Kansas (KU), 1530 W. 15th St, Lawrence, KS 66045, USA; sarah.vanoosten@ku.edu

⁶ IBER Institute for Bioengineering Research, University of Kansas (KU), 1530 W. 15th St, Lawrence, KS 66045, USA; nilan_jayabahu@ku.edu

⁷ Bioengineering Program, University of Kansas (KU), 1530 W. 15th St, Lawrence, KS 66045; philip.m.elrod@ku.edu

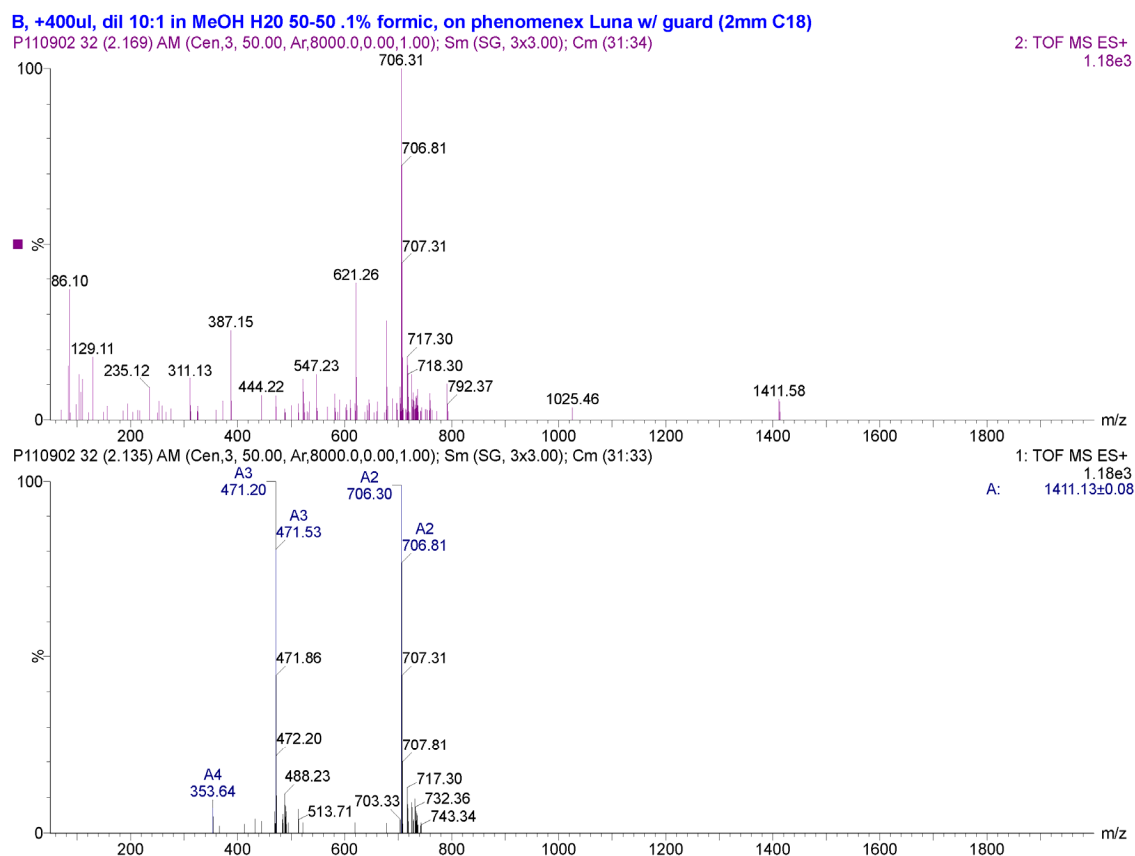
⁸ IBER Institute for Bioengineering Research, Department of Mechanical Engineering, Bioengineering Program, University of Kansas (KU), 1530 W. 15th St, Lawrence, KS 66045, USA; pspencer@ku.edu

⁹ IBER Institute for Bioengineering Research, Department of Mechanical Engineering, Bioengineering Program, University of Kansas (KU), 1530 W. 15th St, Lawrence, KS 66045, USA; ctamerler@ku.edu

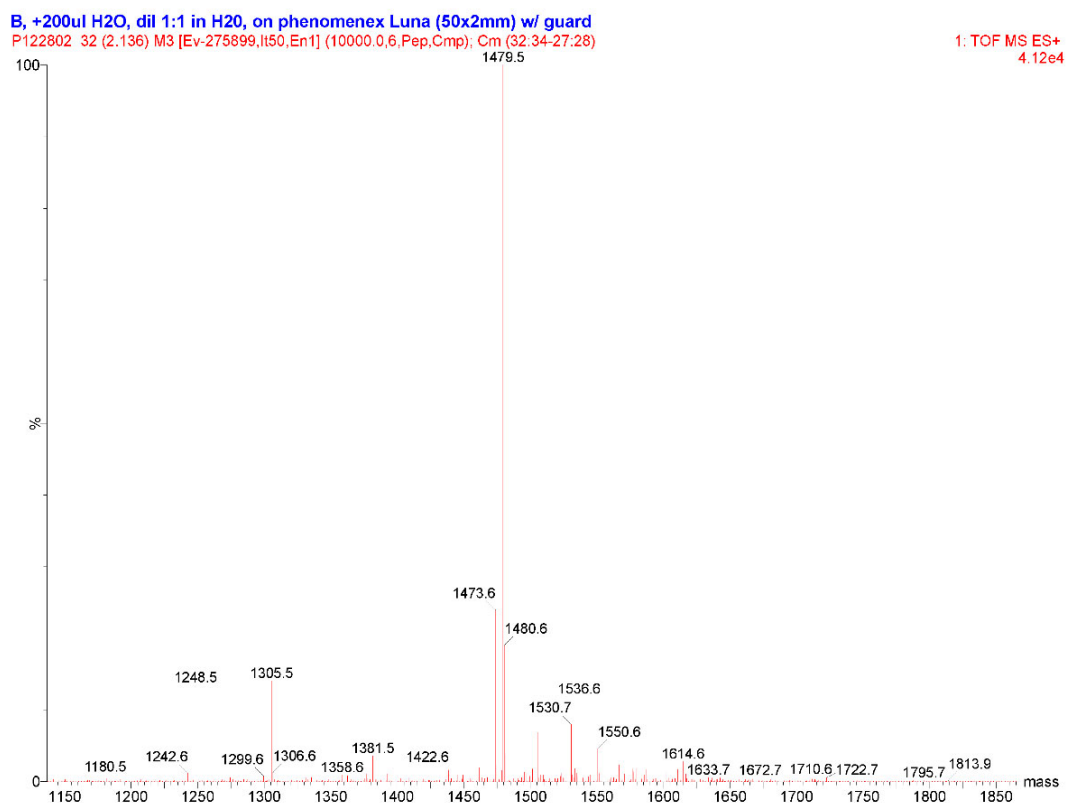
* Correspondence: Candan Tamerler; ctamerler@ku.edu

Supplemental Table S1. Molecular weights of peptides synthesized and peptide-monomer conjugates with sequences.

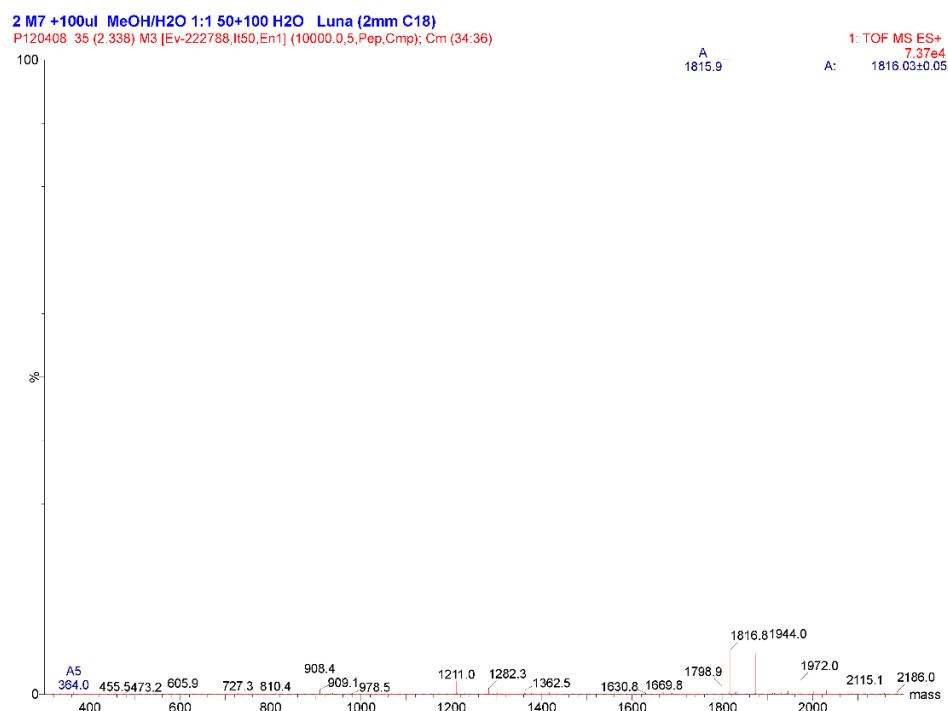
Peptide Conjugate	Sequence	Calculated MW (Da)	Observed MW (Da)
K-GSGGGK-HABP	K-GSGGG-CMLPHHGAC	1411.6	1411.1
MA-K-GSGGG-HABP	MA-K-GSGGG-CMLPHHGAC	1479.7	1479.5
AMPM7	K-GGG-KWKRWWWWR-NH ₂	1816.1	1816.0
MA-AMPM7	MA-K-GGG-KWKRWWWWR-NH ₂	1884.2	1884.1



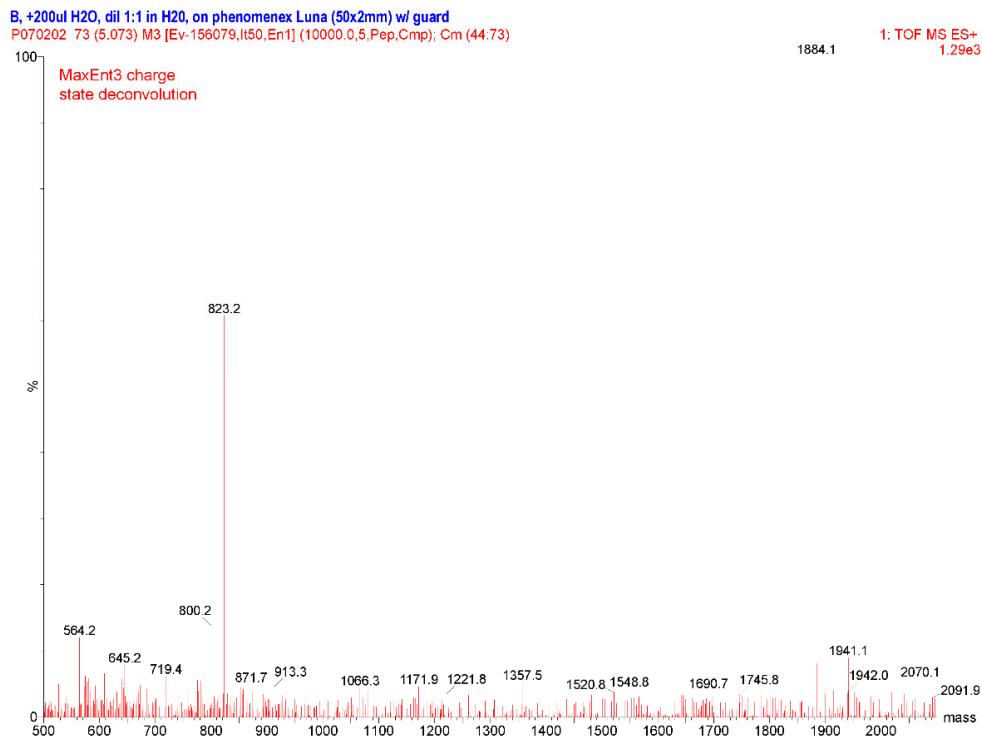
Supplemental Figure S1. MALDI-TOF MS results for K-GSGGGK-HABP



Supplemental Figure S2. MALDI-TOF MS results for MA-K-GSGGGK-HABP



Supplemental Figure S3. MALDI-TOF MS results for AMPM7

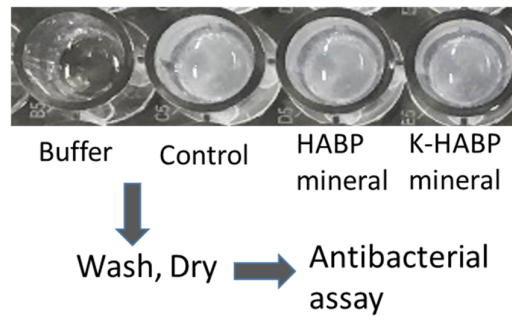


Supplemental Figure S4. MALDI-TOF MS results for MA-AMPM7

Supplemental Table S2. Minimum inhibitory concentration (MIC) of peptides synthesized and peptide-monomer conjugates against 10^4 CFU *S. mutans*.

Peptide	Sequence	MIC ($\mu\text{g/mL}$)
AMPM7	KGGGKWKRWWWR-NH ₂	7.8
MA-AMPM7	MA-KGGGKWKRWWWR-NH ₂	15.6
MA-K-GSGGG-HABP	MA-KGSGGGCMLPHHGAC	>250
MA (monomer)	C ₄ H ₆ O ₂	>1250

Sample	MIC (μg/mL)
Mineral Control	>1000
K-GSGGG-HABP integrated mineral	>1000
AMPM7+ K-GSGGG-HABP integrated mineral	31.3



Supplemental Figure S5: Activity of dental adhesive components and mineral against *S. mutans* at 10^4 CFU/mL