

Activated alpha-2 Macroglobulin via LRP1 improves insulin response in lipid-loaded HL-1 cardiomyocytes.

Actis Dato Virginia, Chiabrando Gustavo A

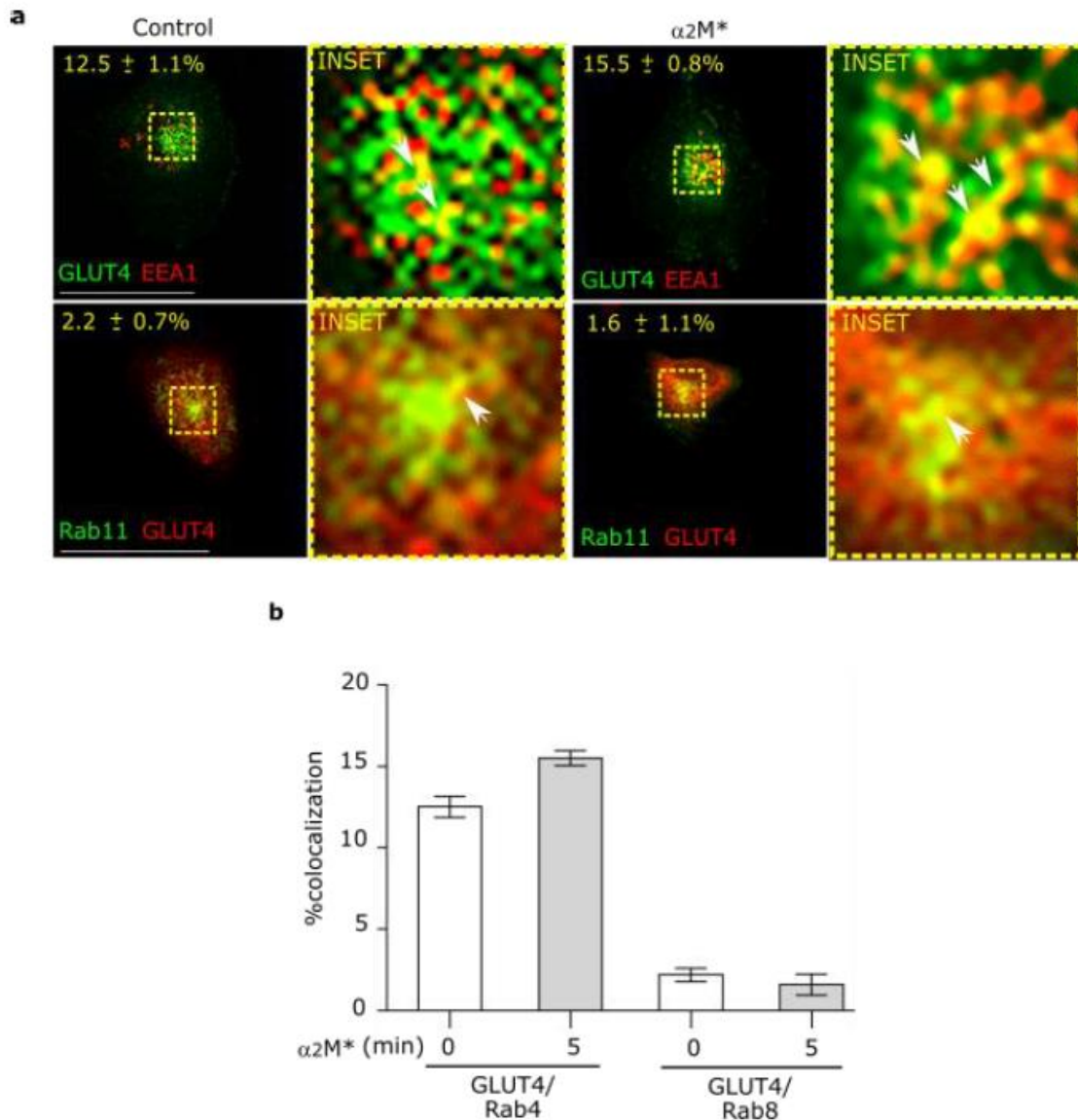


Figure S1. (a) Confocal microscopy in cells treated with $\alpha 2M^*$ (60nM) for 5 min at 37°C. Images show colocalization between GLUT4 and EEA1 (red) or Rab11 (green). INSET represents magnification 4X of framed regions in dotted lines. White arrowheads indicate colocalization sectors. Scale bar= 10 μ m. (b) Quantitative analysis of colocalization between GLUT4 and different markers by Manders' coefficients expressed as mean \pm SD (%). At least 20 cells per condition were analyzed (n=20).