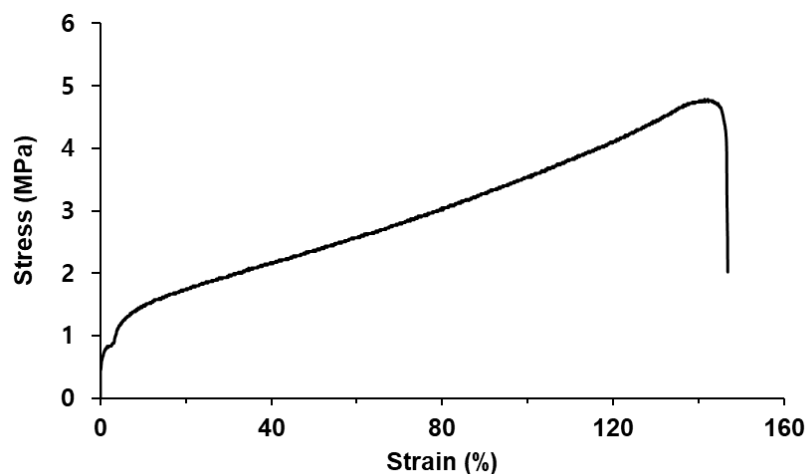




Supplementary Materials

# Super-Toughened Fumed-Silica-Reinforced Thiol-Epoxy Composites Containing Epoxide-Terminated Polydimethylsiloxanes



**Figure S1.** A stress-strain curve of BPDGE/thiol/MI.

**Table S1.** Mechanical properties of the BPDGE/thiol/MI system and control composite.

	BPDGE/thiol/MI	Control composite
Tensile strength (MPa)	$5.2 \pm 0.4$	$5.8 \pm 0.3$
Elongation at break (%)	$143 \pm 3.8$	$93 \pm 5.9$
Young's modulus (MPa)	$12.8 \pm 0.4$	$25.9 \pm 0.3$
Toughness (MJ/m <sup>3</sup> )	$4.48 \pm 0.16$	$3.37 \pm 0.55$
Impact strength (KJ/m <sup>2</sup> )	$40.2 \pm 2.0$	$26.0 \pm 1.2$

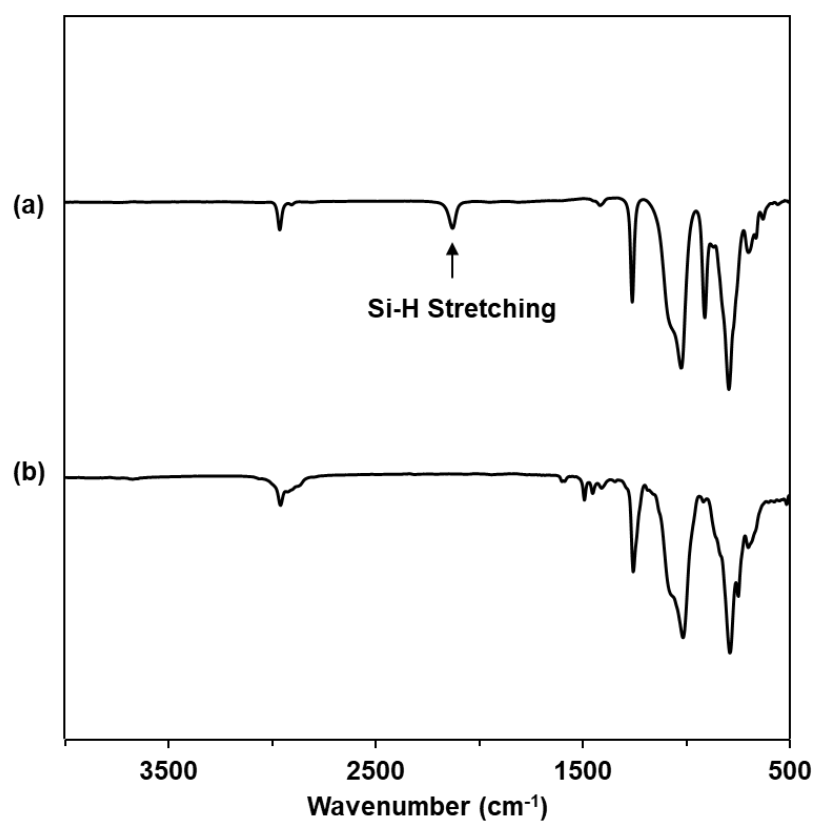


Figure S2. FTIR spectra of (a) h-PDMS and (b) ep-PDMS.

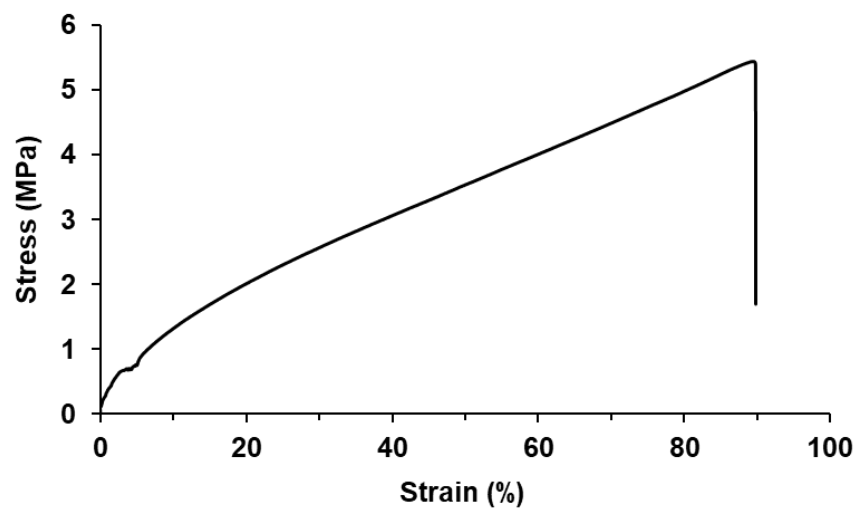
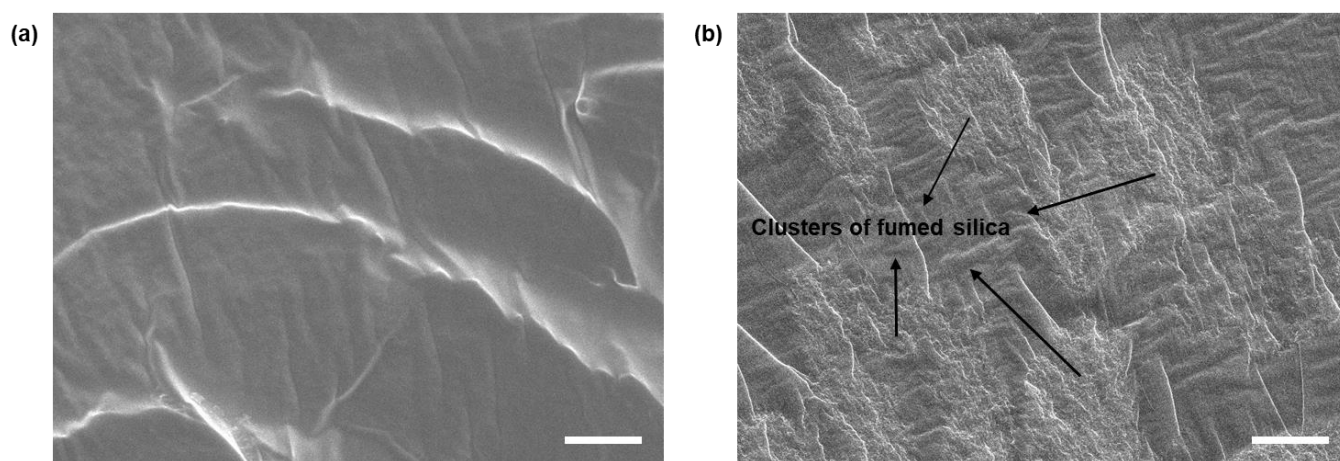
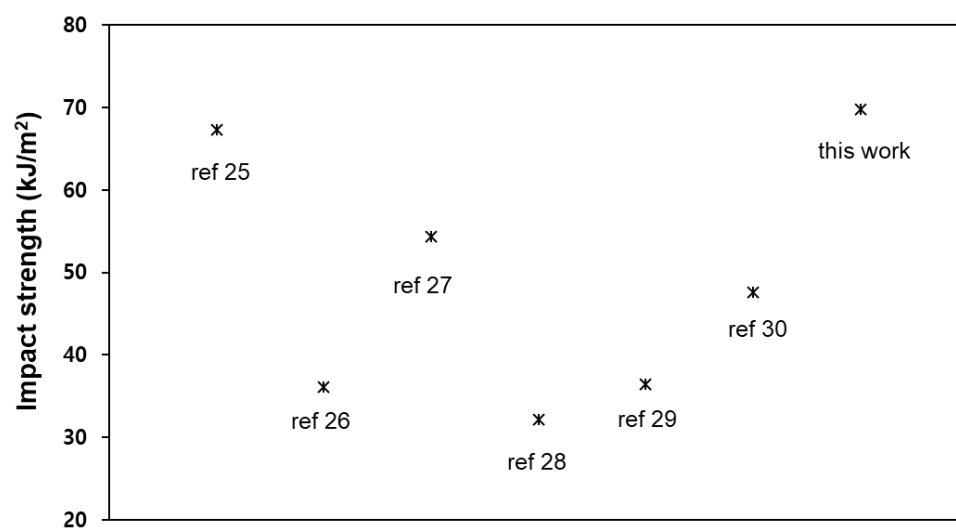


Figure S3. A stress-strain curve of the control composite.



**Figure S4.** FESEM images of the fractured surfaces of (a) NC-3 and (b) the control composite. A scale bar represents 10 µm.



**Figure S5.** Selected reinforced epoxy composites and their maximum impact strength.