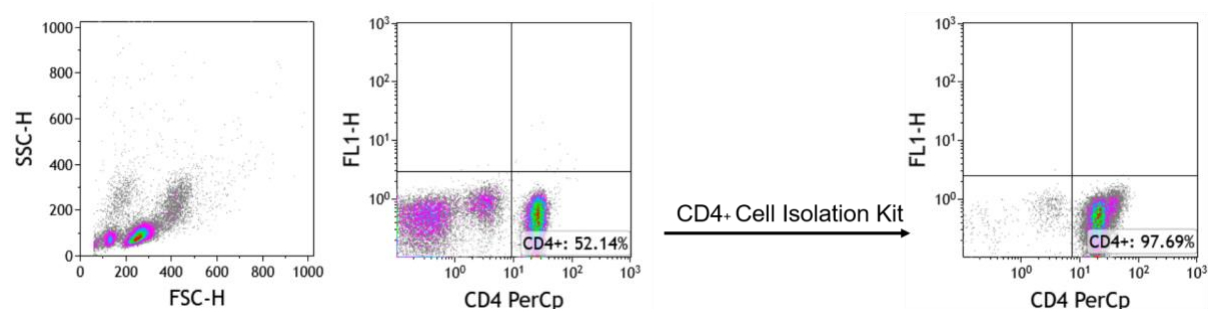
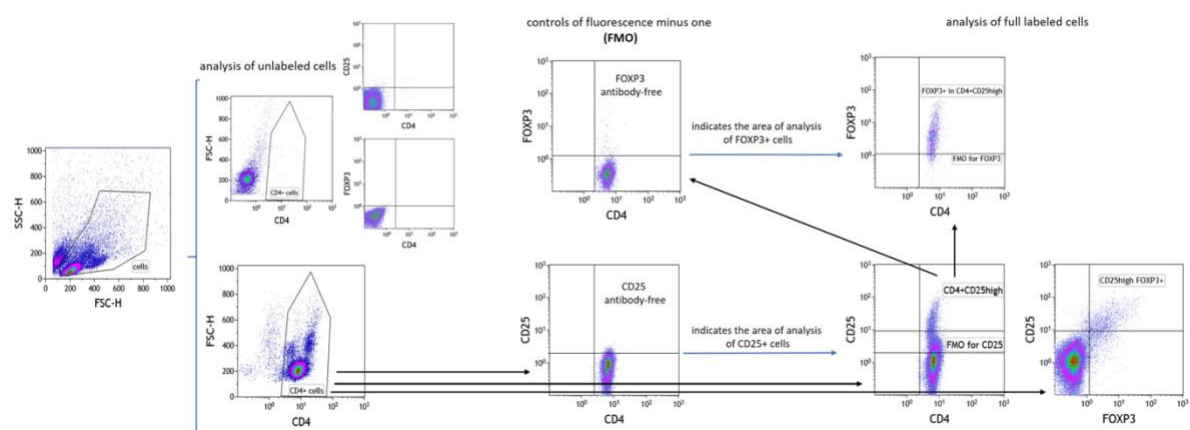


SUPPLEMENTARY FIGURES

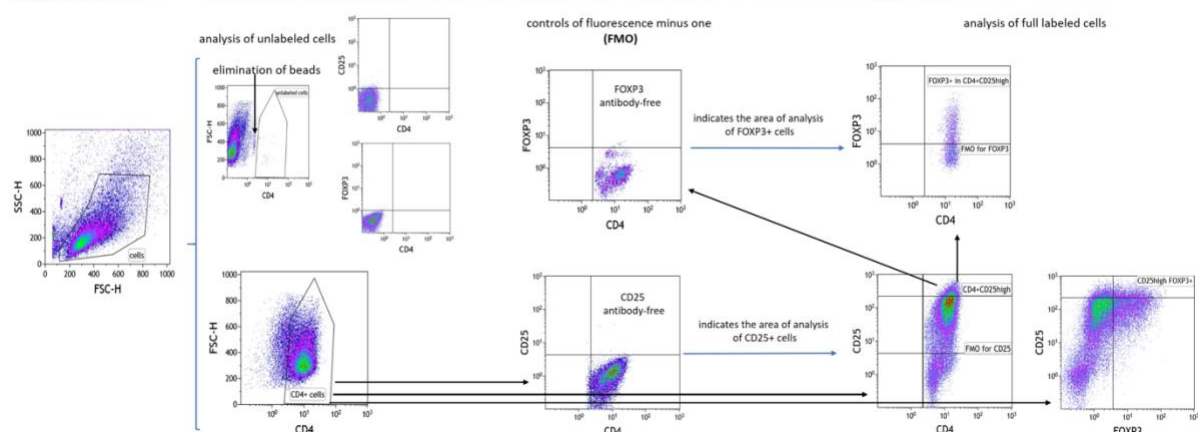


Supplementary Figure S1. A representative flow cytometry analysis of the purity of CD4⁺ T cell populations obtained following isolation using magnetic beads CD4⁺ cell isolation kit.

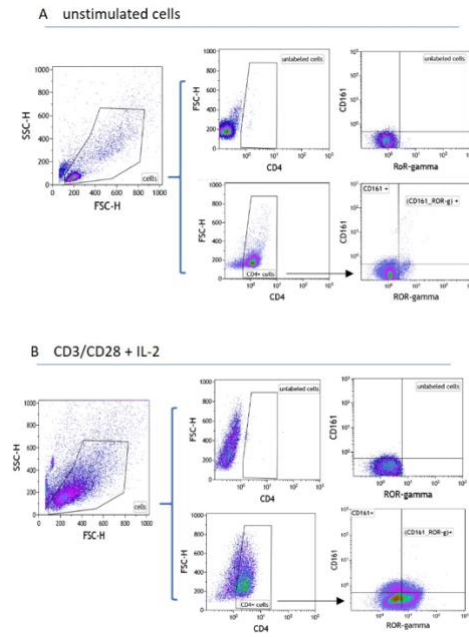
A unstimulated cells



B CD3/CD28+IL-2



Supplementary Figure S2. Gating strategy for flow cytometry identification and evaluation of CD25^{high} and CD25^{high} FOXP3⁺ Treg cells in (A) unstimulated control and (B) CD3/CD28 beads+IL-2-stimulated cultures.



Supplementary Figure S3. Gating strategy for flow cytometry identification and evaluation of CD161⁺ and CD161⁺ RORγ⁺ Th17 cells in (A) unstimulated control and (B) CD3/CD28 beads+IL-2-stimulated cultures.