

Error bars indicate + / - 1 standard error of the mean

Included Files

F1 F5 2021-09-16 14-08-45

Details

NTA Version: NTA 3.4 Build 3.4.003
 Script Used: SOP Standard Measurement 02-08-03PM 16Sep2021.txt
 Time Captured: 14:08:03 16/09/2021
 Operator:
 Pre-treatment:
 Sample Name:
 Diluent:
 Remarks:

Capture Settings

Camera Type: sCMOS
 Laser Type: Green
 Camera Level: 14
 Slider Shutter: 1259
 Slider Gain: 366
 FPS: 25.0
 Number of Frames: 749
 Temperature: 21.7 °C
 Viscosity: (Water) 1.0 cP
 Dilution factor: 1 x 10e2
 Syringe Pump Speed: 25

Analysis Settings

Detect Threshold: 7
 Blur Size: Auto
 Max Jump Distance: Auto: 24.5 pix

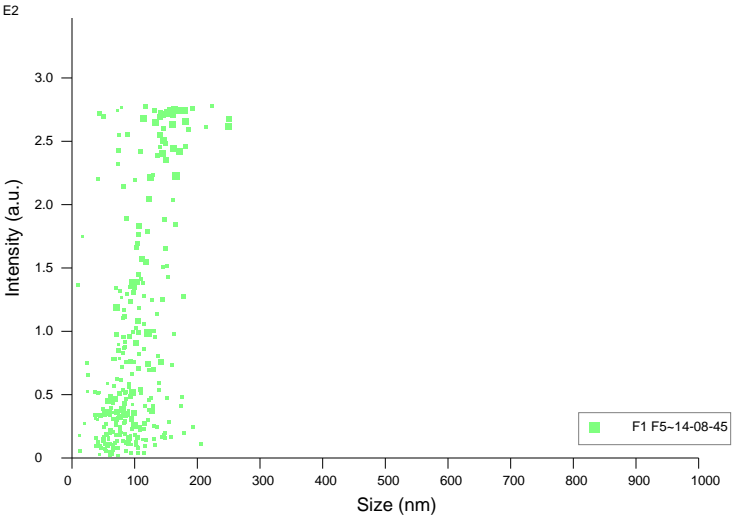
Results

Stats: Merged Data

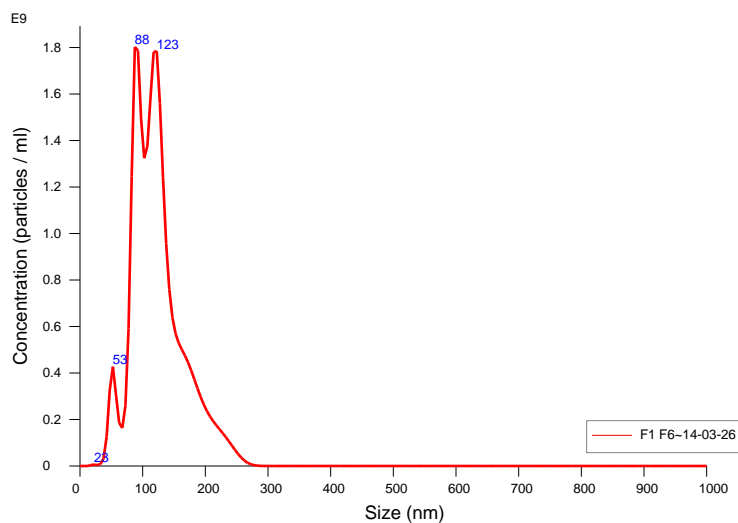
Mean: 114.9 nm
 Mode: 98.3 nm
 SD: 38.9 nm
 D10: 65.9 nm
 D50: 111.9 nm
 D90: 162.6 nm

Stats: Mean +/- Standard Error

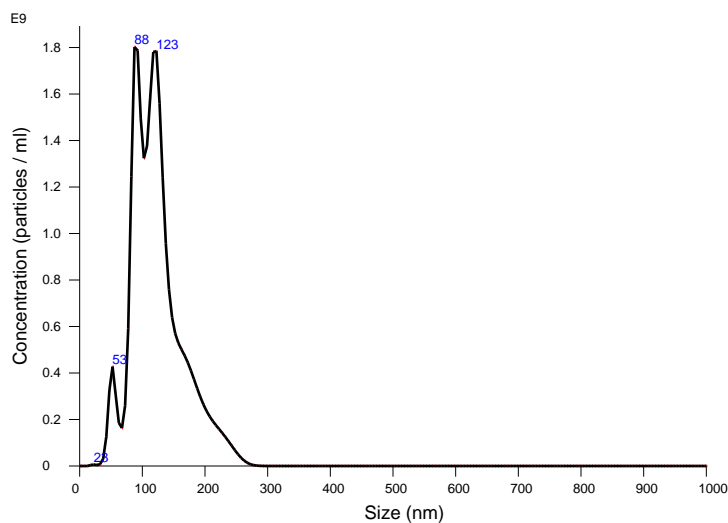
Mean: 114.9 +/- 0.0 nm
 Mode: 98.3 +/- 0.0 nm
 SD: 38.9 +/- 0.0 nm
 D10: 65.9 +/- 0.0 nm
 D50: 111.9 +/- 0.0 nm
 D90: 162.6 +/- 0.0 nm
 Concentration: 2.00e+10 +/- 0.00e+00 particles/ml
 10.9 +/- 0.0 particles/frame
 15.9 +/- 0.0 centres/frame



Intensity / Size graph for Experiment:
F1 F5 2021-09-16 14-08-03



FTLA Concentration / Size graph for Experiment:
F1 F6 2021-09-16 14-02-43



Averaged FTLA Concentration / Size for Experiment:
F1 F6 2021-09-16 14-02-43
Error bars indicate + / - 1 standard error of the mean

Included Files

F1 F6 2021-09-16 14-03-26

Details

NTA Version: NTA 3.4 Build 3.4.003
Script Used: SOP Standard Measurement 02-02-43PM 16Sep2021.txt
Time Captured: 14:02:43 16/09/2021
Operator:
Pre-treatment:
Sample Name:
Diluent:
Remarks:

Capture Settings

Camera Type: sCMOS
Laser Type: Green
Camera Level: 14
Slider Shutter: 1259
Slider Gain: 366
FPS: 25.0
Number of Frames: 749
Temperature: 21.5 °C
Viscosity: (Water) 1.0 cP
Dilution factor: 1 x 10e2
Syringe Pump Speed: 25

Analysis Settings

Detect Threshold: 7
Blur Size: Auto
Max Jump Distance: Auto: 22.0 pix

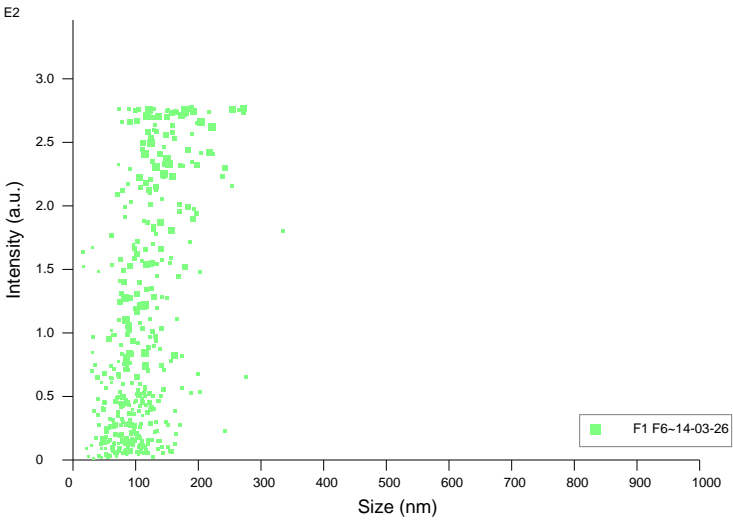
Results

Stats: Merged Data

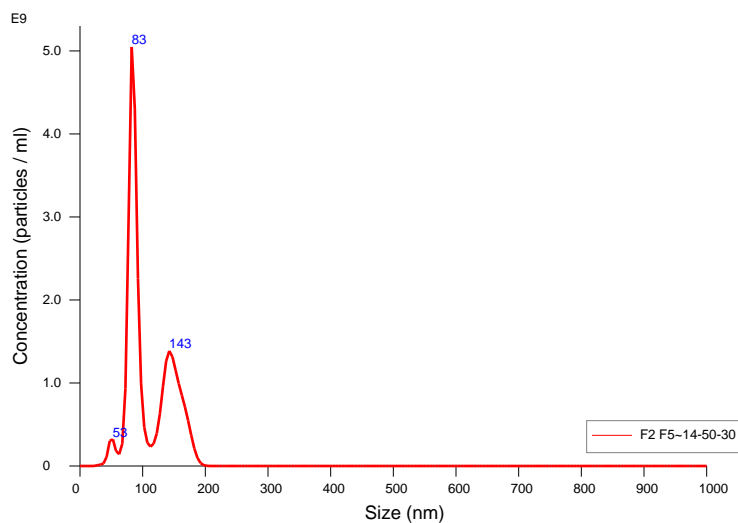
Mean: 123.0 nm
Mode: 89.9 nm
SD: 41.0 nm
D10: 81.3 nm
D50: 117.1 nm
D90: 182.0 nm

Stats: Mean +/- Standard Error

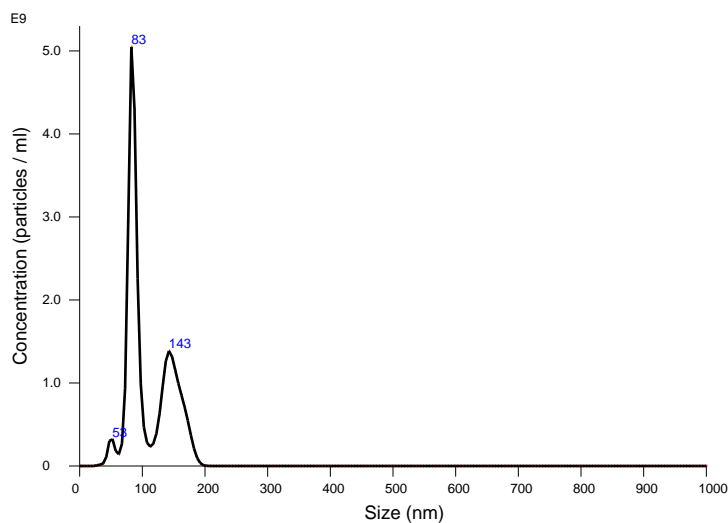
Mean: 123.0 +/- 0.0 nm
Mode: 89.9 +/- 0.0 nm
SD: 41.0 +/- 0.0 nm
D10: 81.3 +/- 0.0 nm
D50: 117.1 +/- 0.0 nm
D90: 182.0 +/- 0.0 nm
Concentration: 2.76e+10 +/- 0.00e+00 particles/ml
15.1 +/- 0.0 particles/frame
17.6 +/- 0.0 centres/frame



Intensity / Size graph for Experiment:
F1 F6 2021-09-16 14-02-43



FTLA Concentration / Size graph for Experiment:
F2 F5 2021-09-16 14-49-47



Averaged FTLA Concentration / Size for Experiment:
F2 F5 2021-09-16 14-49-47
Error bars indicate + / - 1 standard error of the mean

Included Files

F2 F5 2021-09-16 14-50-30

Details

NTA Version: NTA 3.4 Build 3.4.003
Script Used: SOP Standard Measurement 02-49-47PM 16Sep2021.txt
Time Captured: 14:49:47 16/09/2021
Operator:
Pre-treatment:
Sample Name:
Diluent:
Remarks:

Capture Settings

Camera Type: sCMOS
Laser Type: Green
Camera Level: 14
Slider Shutter: 1259
Slider Gain: 366
FPS: 25.0
Number of Frames: 749
Temperature: 22.6 °C
Viscosity: (Water) 0.9 cP
Dilution factor: 1 x 10e2
Syringe Pump Speed: 25

Analysis Settings

Detect Threshold: 7
Blur Size: Auto
Max Jump Distance: Auto: 23.1 pix

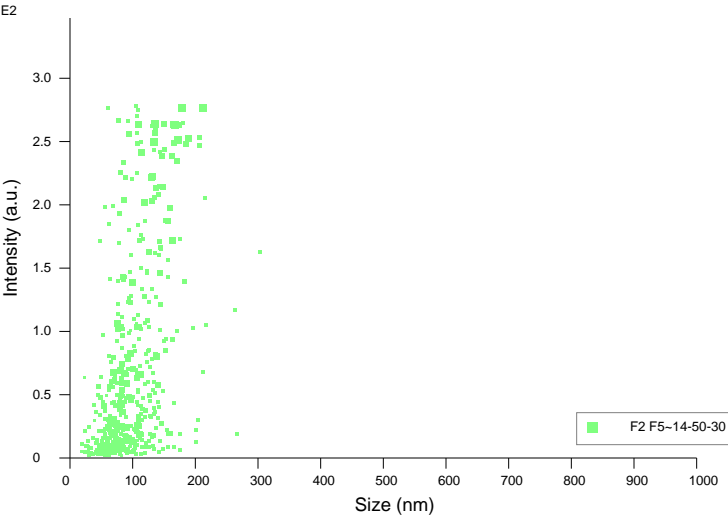
Results

Stats: Merged Data

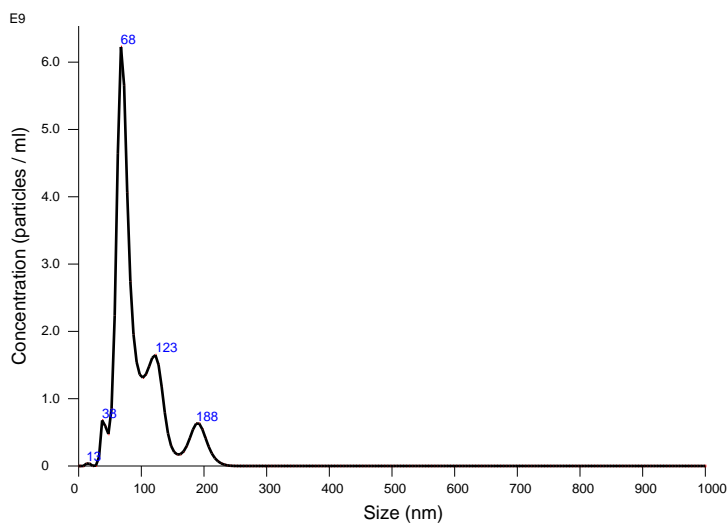
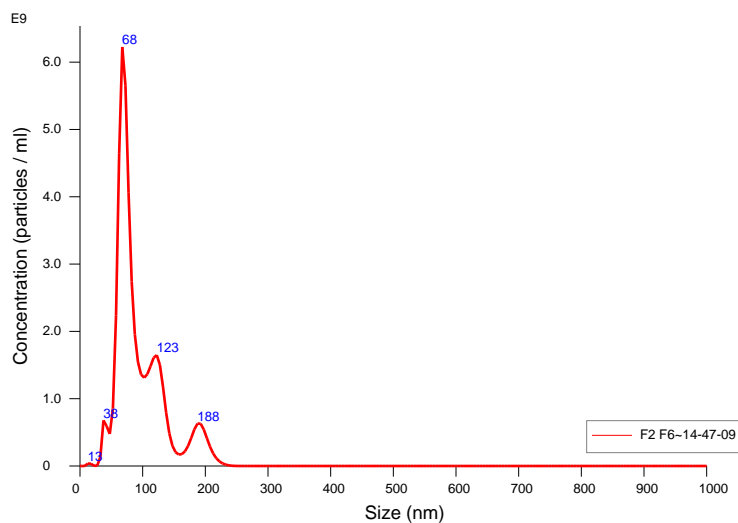
Mean: 107.9 nm
Mode: 83.7 nm
SD: 34.3 nm
D10: 76.2 nm
D50: 90.9 nm
D90: 159.1 nm

Stats: Mean +/- Standard Error

Mean: 107.9 +/- 0.0 nm
Mode: 83.7 +/- 0.0 nm
SD: 34.3 +/- 0.0 nm
D10: 76.2 +/- 0.0 nm
D50: 90.9 +/- 0.0 nm
D90: 159.1 +/- 0.0 nm
Concentration: 3.00e+10 +/- 0.00e+00 particles/ml
16.4 +/- 0.0 particles/frame
19.0 +/- 0.0 centres/frame



Intensity / Size graph for Experiment:
F2 F5 2021-09-16 14-49-47



Error bars indicate + / - 1 standard error of the mean

Included Files

F2 F6 2021-09-16 14-47-09

Details

NTA Version: NTA 3.4 Build 3.4.003
Script Used: SOP Standard Measurement 02-46-27PM 16Sep2021.txt
Time Captured: 14:46:27 16/09/2021
Operator:
Pre-treatment:
Sample Name:
Diluent:
Remarks:

Capture Settings

Camera Type: sCMOS
Laser Type: Green
Camera Level: 14
Slider Shutter: 1259
Slider Gain: 366
FPS: 25.0
Number of Frames: 749
Temperature: 22.6 °C
Viscosity: (Water) 0.9 cP
Dilution factor: 1 x 10e2
Syringe Pump Speed: 25

Analysis Settings

Detect Threshold: 7
Blur Size: Auto
Max Jump Distance: Auto: 23.2 pix

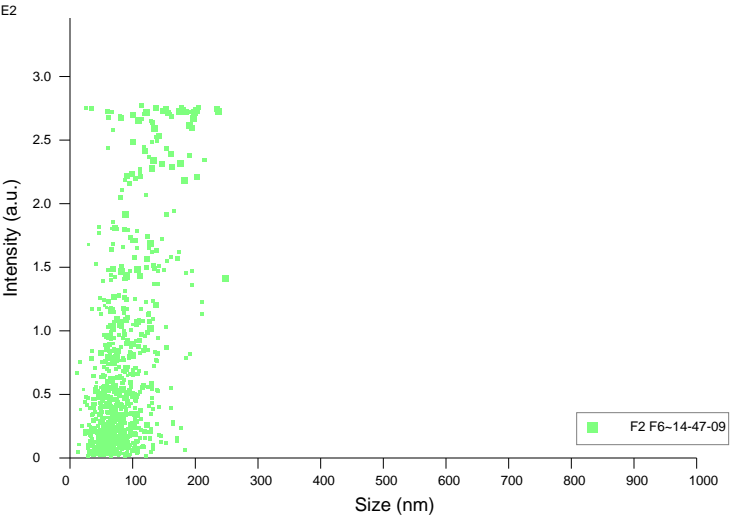
Results

Stats: Merged Data

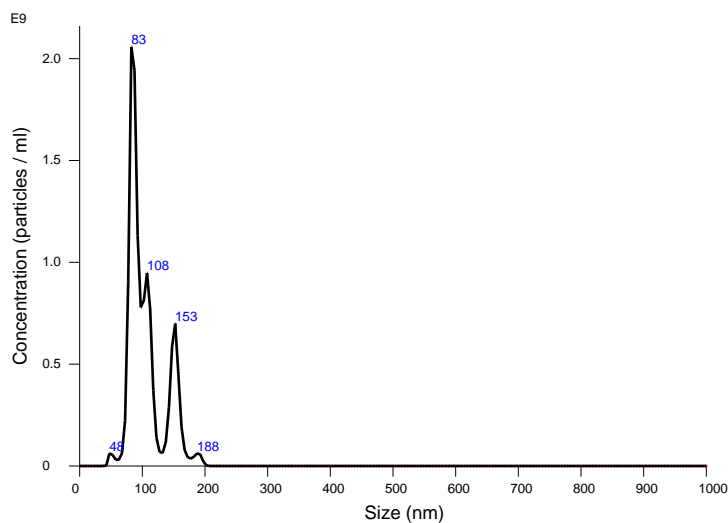
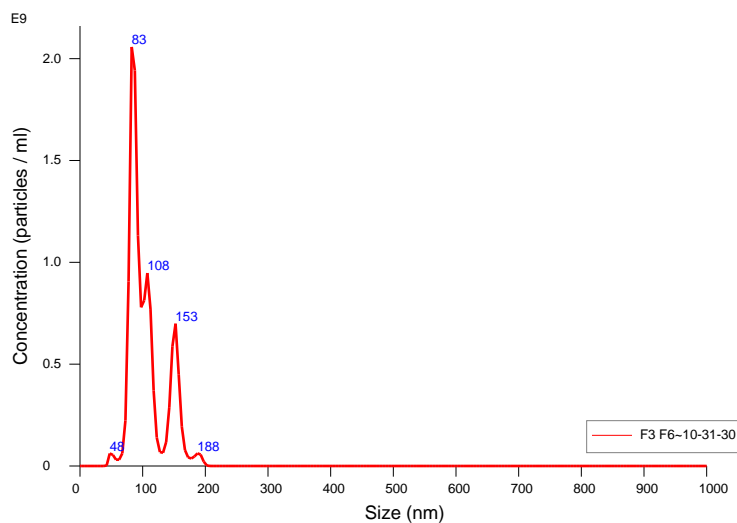
Mean: 94.3 nm
Mode: 68.7 nm
SD: 39.7 nm
D10: 59.9 nm
D50: 79.1 nm
D90: 149.8 nm

Stats: Mean +/- Standard Error

Mean: 94.3 +/- 0.0 nm
Mode: 68.7 +/- 0.0 nm
SD: 39.7 +/- 0.0 nm
D10: 59.9 +/- 0.0 nm
D50: 79.1 +/- 0.0 nm
D90: 149.8 +/- 0.0 nm
Concentration: 4.99e+10 +/- 0.00e+00 particles/ml
27.2 +/- 0.0 particles/frame
31.2 +/- 0.0 centres/frame



Intensity / Size graph for Experiment:
F2 F6 2021-09-16 14-46-27



Error bars indicate + / - 1 standard error of the mean

Included Files

F3 F6 2021-06-22 10-31-30

Details

NTA Version: NTA 3.4 Build 3.4.003
Script Used: SOP Standard Measurement 10-30-49AM 22Jun2021.txt
Time Captured: 10:30:49 22/06/2021
Operator:
Pre-treatment:
Sample Name:
Diluent:
Remarks:

Capture Settings

Camera Type: sCMOS
Laser Type: Green
Camera Level: 14
Slider Shutter: 1259
Slider Gain: 366
FPS: 25.0
Number of Frames: 749
Temperature: 23.6 °C
Viscosity: (Water) 0.9 cP
Dilution factor: 1 x 10e2
Syringe Pump Speed: 25

Analysis Settings

Detect Threshold: 7
Blur Size: Auto
Max Jump Distance: Auto: 14.2 pix

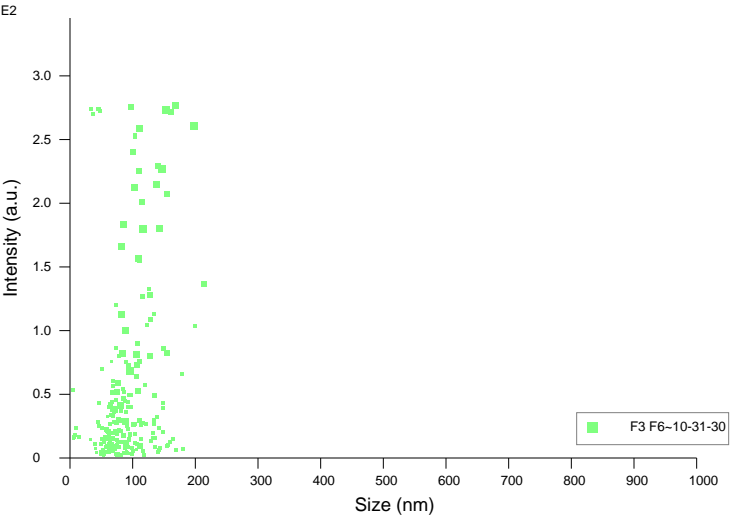
Results

Stats: Merged Data

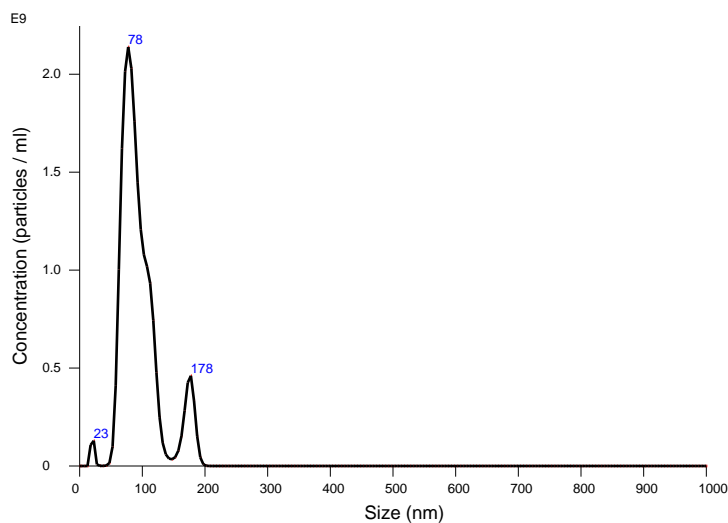
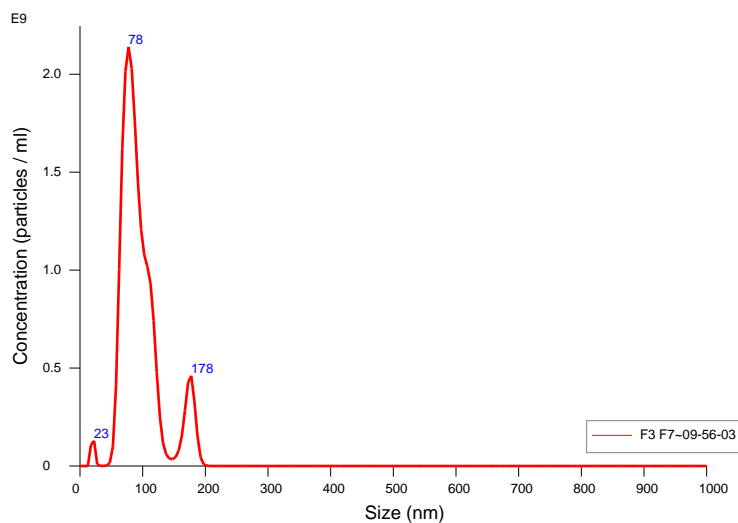
Mean: 105.5 nm
Mode: 84.5 nm
SD: 28.5 nm
D10: 79.7 nm
D50: 95.4 nm
D90: 152.7 nm

Stats: Mean +/- Standard Error

Mean: 105.5 +/- 0.0 nm
Mode: 84.5 +/- 0.0 nm
SD: 28.5 +/- 0.0 nm
D10: 79.7 +/- 0.0 nm
D50: 95.4 +/- 0.0 nm
D90: 152.7 +/- 0.0 nm
Concentration: 1.31e+10 +/- 0.00e+00 particles/ml
7.2 +/- 0.0 particles/frame
9.1 +/- 0.0 centres/frame



Intensity / Size graph for Experiment:
F3 F6 2021-06-22 10-30-49



Included Files

F3 F7 2021-06-22 09-56-03

Details

NTA Version: NTA 3.4 Build 3.4.003
Script Used: SOP Standard Measurement 09-55-20AM 22Jun2021.txt
Time Captured: 09:55:20 22/06/2021
Operator:
Pre-treatment:
Sample Name:
Diluent:
Remarks:

Capture Settings

Camera Type: sCMOS
Laser Type: Green
Camera Level: 14
Slider Shutter: 1259
Slider Gain: 366
FPS: 25.0
Number of Frames: 749
Temperature: 21.9 °C
Viscosity: (Water) 1.0 cP
Dilution factor: 1 x 10e2
Syringe Pump Speed: 25

Analysis Settings

Detect Threshold: 7
Blur Size: Auto
Max Jump Distance: Auto: 27.9 pix

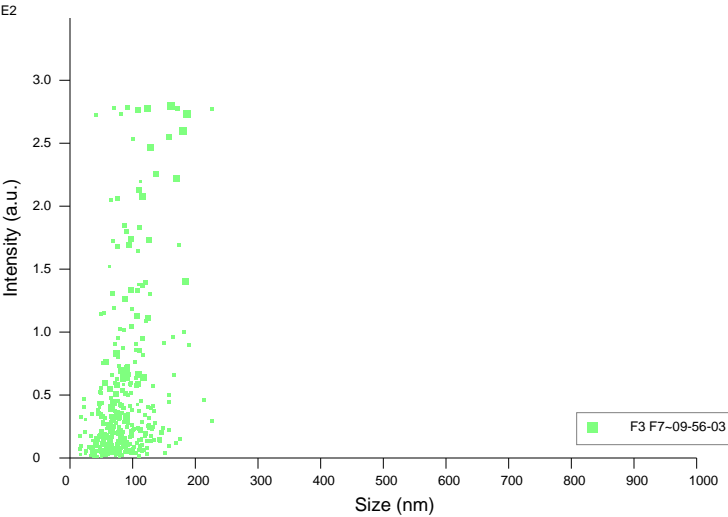
Results

Stats: Merged Data

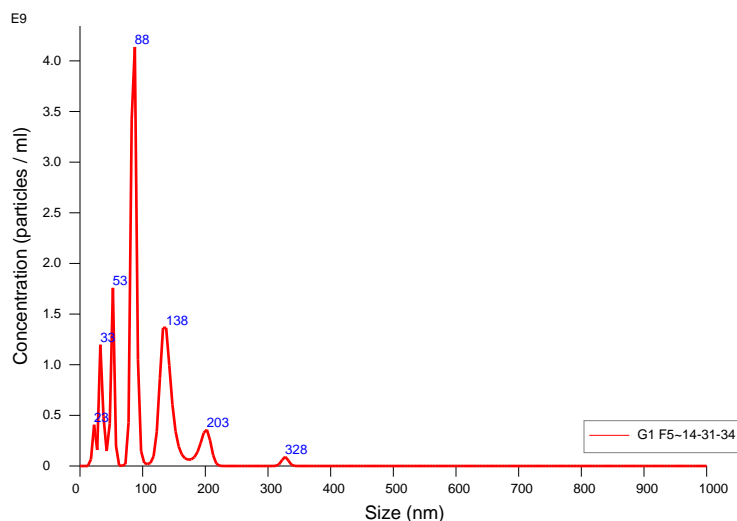
Mean: 95.3 nm
Mode: 77.7 nm
SD: 32.0 nm
D10: 65.9 nm
D50: 87.2 nm
D90: 138.7 nm

Stats: Mean +/- Standard Error

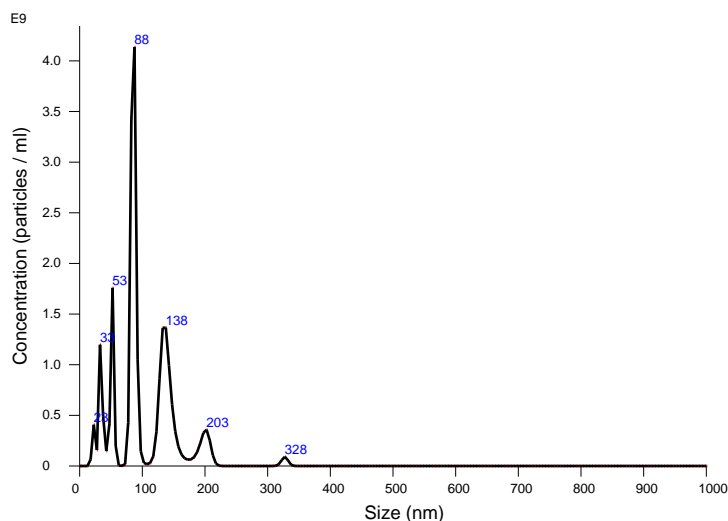
Mean: 95.3 +/- 0.0 nm
Mode: 77.7 +/- 0.0 nm
SD: 32.0 +/- 0.0 nm
D10: 65.9 +/- 0.0 nm
D50: 87.2 +/- 0.0 nm
D90: 138.7 +/- 0.0 nm
Concentration: 2.07e+10 +/- 0.00e+00 particles/ml
11.3 +/- 0.0 particles/frame
14.0 +/- 0.0 centres/frame



Intensity / Size graph for Experiment:
F3 F7 2021-06-22 09-55-20



FTLA Concentration / Size graph for Experiment:
G1 F5 2021-09-16 14-30-52



Averaged FTLA Concentration / Size for Experiment:
G1 F5 2021-09-16 14-30-52
Error bars indicate + / - 1 standard error of the mean

Included Files

G1 F5 2021-09-16 14-31-34

Details

NTA Version: NTA 3.4 Build 3.4.003
Script Used: SOP Standard Measurement 02-30-52PM 16Sep2021.txt
Time Captured: 14:30:52 16/09/2021
Operator:
Pre-treatment:
Sample Name:
Diluent:
Remarks:

Capture Settings

Camera Type: sCMOS
Laser Type: Green
Camera Level: 14
Slider Shutter: 1259
Slider Gain: 366
FPS: 25.0
Number of Frames: 749
Temperature: 22.3 °C
Viscosity: (Water) 0.9 cP
Dilution factor: 1 x 10e2
Syringe Pump Speed: 25

Analysis Settings

Detect Threshold: 7
Blur Size: Auto
Max Jump Distance: Auto: 22.8 pix

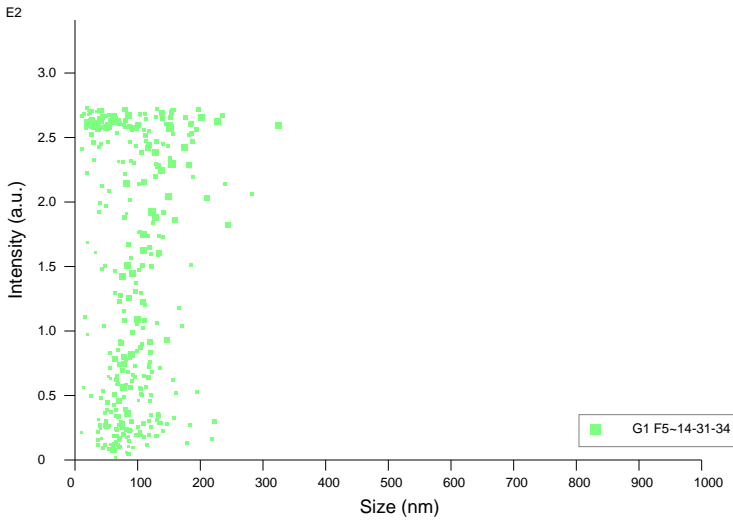
Results

Stats: Merged Data

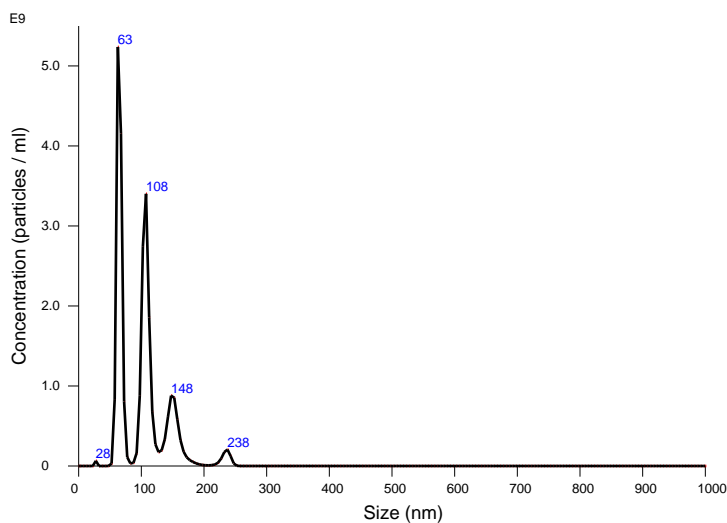
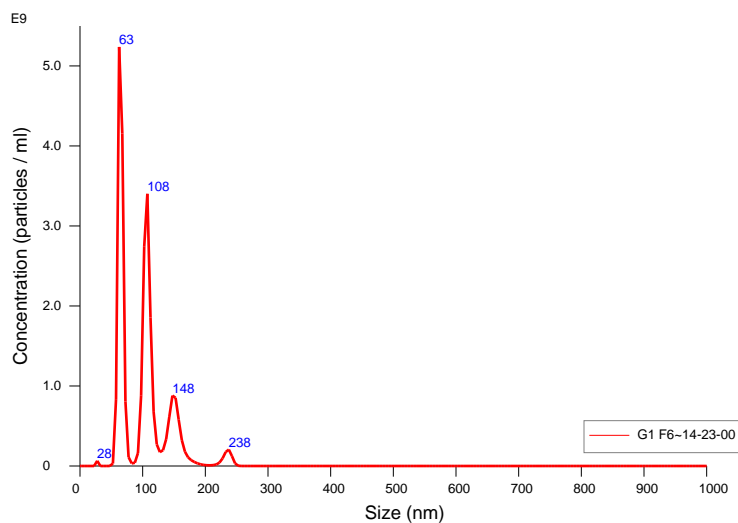
Mean: 101.9 nm
Mode: 85.9 nm
SD: 50.3 nm
D10: 39.2 nm
D50: 88.0 nm
D90: 155.9 nm

Stats: Mean +/- Standard Error

Mean: 101.9 +/- 0.0 nm
Mode: 85.9 +/- 0.0 nm
SD: 50.3 +/- 0.0 nm
D10: 39.2 +/- 0.0 nm
D50: 88.0 +/- 0.0 nm
D90: 155.9 +/- 0.0 nm
Concentration: 2.24e+10 +/- 0.00e+00 particles/ml
12.2 +/- 0.0 particles/frame
15.9 +/- 0.0 centres/frame



Intensity / Size graph for Experiment:
G1 F5 2021-09-16 14-30-52



Error bars indicate + / - 1 standard error of the mean

Included Files

G1 F6 2021-09-16 14-23-00

Details

NTA Version: NTA 3.4 Build 3.4.003
Script Used: SOP Standard Measurement 02-22-18PM 16Sep2021.txt
Time Captured: 14:22:18 16/09/2021
Operator:
Pre-treatment:
Sample Name:
Diluent:
Remarks:

Capture Settings

Camera Type: sCMOS
Laser Type: Green
Camera Level: 14
Slider Shutter: 1259
Slider Gain: 366
FPS: 25.0
Number of Frames: 749
Temperature: 22.0 °C
Viscosity: (Water) 1.0 cP
Dilution factor: 1 x 10e2
Syringe Pump Speed: 25

Analysis Settings

Detect Threshold: 7
Blur Size: Auto
Max Jump Distance: Auto: 24.3 pix

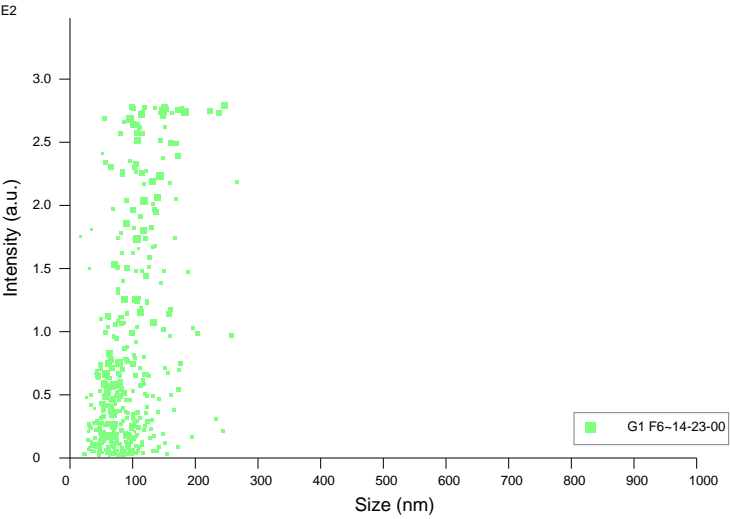
Results

Stats: Merged Data

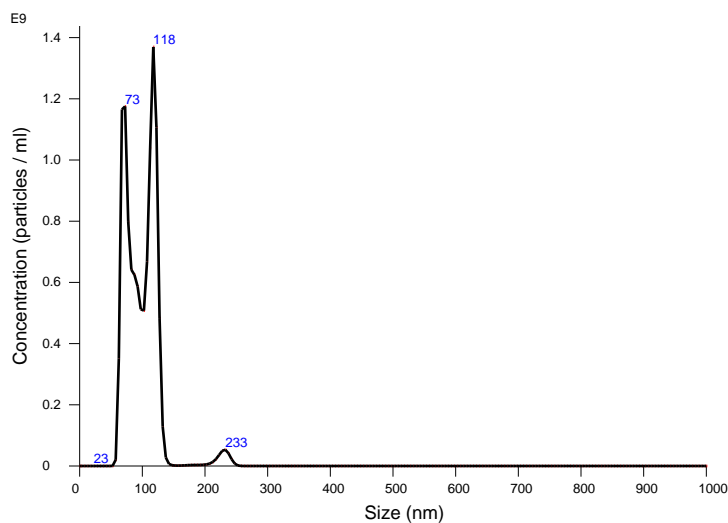
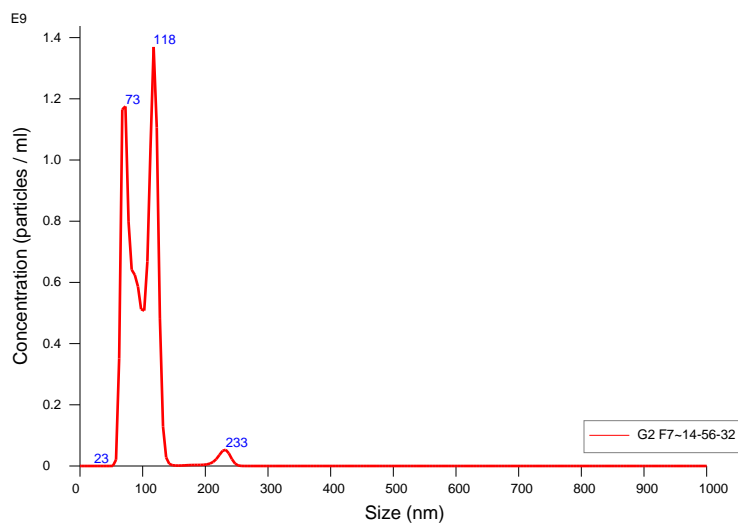
Mean: 99.8 nm
Mode: 64.0 nm
SD: 39.1 nm
D10: 61.6 nm
D50: 101.6 nm
D90: 151.8 nm

Stats: Mean +/- Standard Error

Mean: 99.8 +/- 0.0 nm
Mode: 64.0 +/- 0.0 nm
SD: 39.1 +/- 0.0 nm
D10: 61.6 +/- 0.0 nm
D50: 101.6 +/- 0.0 nm
D90: 151.8 +/- 0.0 nm
Concentration: 2.65e+10 +/- 0.00e+00 particles/ml
14.5 +/- 0.0 particles/frame
17.2 +/- 0.0 centres/frame



Intensity / Size graph for Experiment:
G1 F6 2021-09-16 14-22-18



Error bars indicate + / - 1 standard error of the mean

Included Files

G2 F7 2021-09-16 14-56-32

Details

NTA Version: NTA 3.4 Build 3.4.003
Script Used: SOP Standard Measurement 02-55-50PM 16Sep2021.txt
Time Captured: 14:55:50 16/09/2021
Operator:
Pre-treatment:
Sample Name:
Diluent:
Remarks:

Capture Settings

Camera Type: sCMOS
Laser Type: Green
Camera Level: 14
Slider Shutter: 1259
Slider Gain: 366
FPS: 25.0
Number of Frames: 749
Temperature: 22.7 °C
Viscosity: (Water) 0.9 cP
Dilution factor: 1 x 10e2
Syringe Pump Speed: 25

Analysis Settings

Detect Threshold: 7
Blur Size: Auto
Max Jump Distance: Auto: 14.2 pix

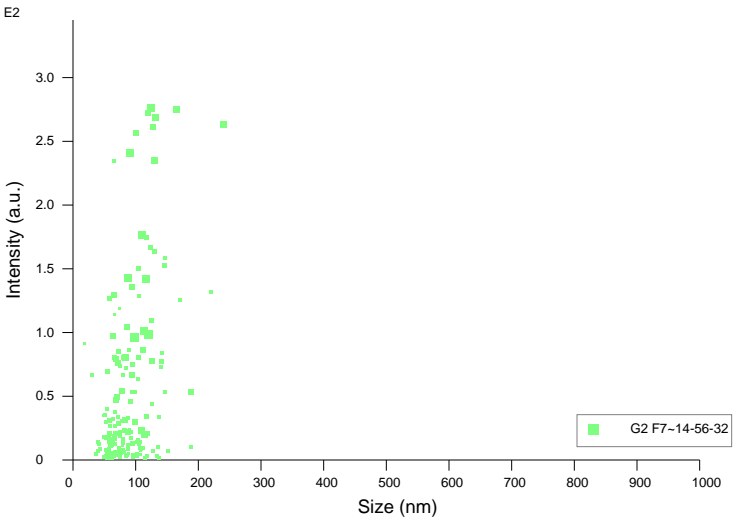
Results

Stats: Merged Data

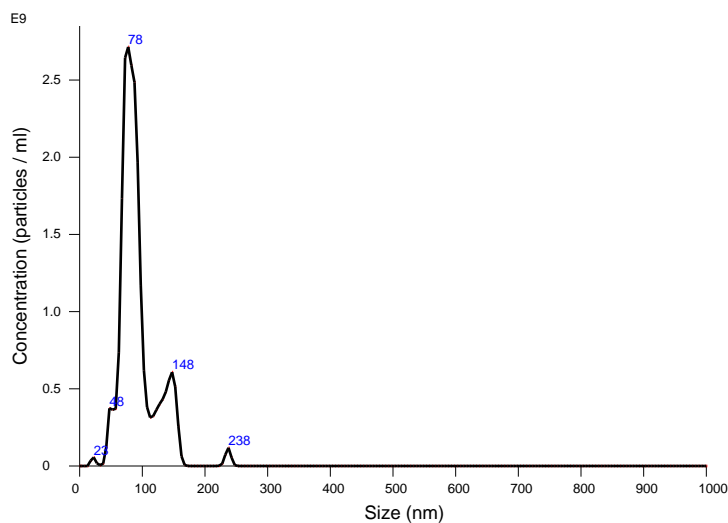
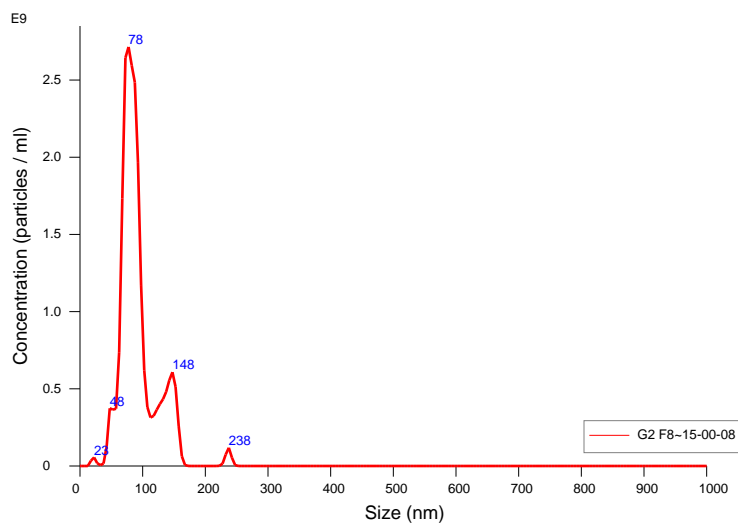
Mean: 99.6 nm
Mode: 117.8 nm
SD: 29.0 nm
D10: 68.3 nm
D50: 98.8 nm
D90: 124.0 nm

Stats: Mean +/- Standard Error

Mean: 99.6 +/- 0.0 nm
Mode: 117.8 +/- 0.0 nm
SD: 29.0 +/- 0.0 nm
D10: 68.3 +/- 0.0 nm
D50: 98.8 +/- 0.0 nm
D90: 124.0 +/- 0.0 nm
Concentration: 1.15e+10 +/- 0.00e+00 particles/ml
6.3 +/- 0.0 particles/frame
8.0 +/- 0.0 centres/frame



Intensity / Size graph for Experiment:
G2 F7 2021-09-16 14-55-50



Error bars indicate + / - 1 standard error of the mean

Included Files

G2 F8 2021-09-16 15-00-08

Details

NTA Version: NTA 3.4 Build 3.4.003
Script Used: SOP Standard Measurement 02-59-27PM 16Sep2021.txt
Time Captured: 14:59:27 16/09/2021
Operator:
Pre-treatment:
Sample Name:
Diluent:
Remarks:

Capture Settings

Camera Type: sCMOS
Laser Type: Green
Camera Level: 14
Slider Shutter: 1259
Slider Gain: 366
FPS: 25.0
Number of Frames: 749
Temperature: 22.7 °C
Viscosity: (Water) 0.9 cP
Dilution factor: 1 x 10e2
Syringe Pump Speed: 25

Analysis Settings

Detect Threshold: 7
Blur Size: Auto
Max Jump Distance: Auto: 25.5 pix

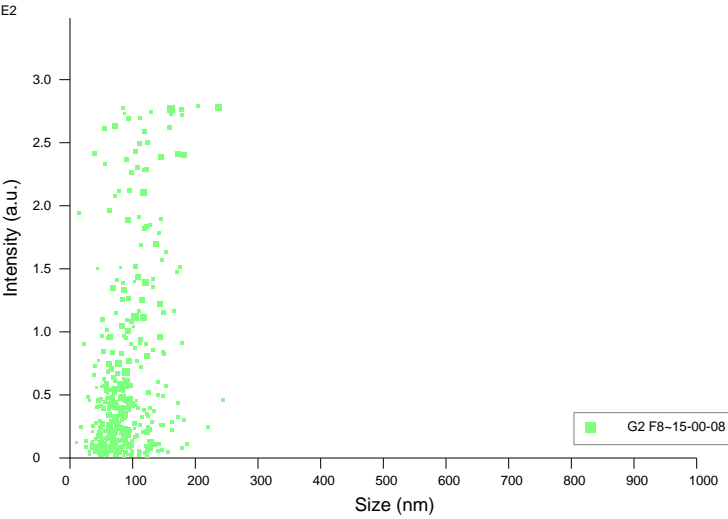
Results

Stats: Merged Data

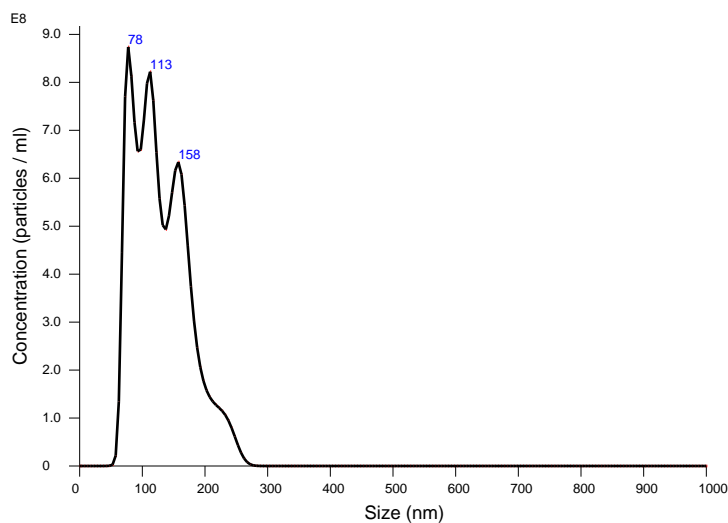
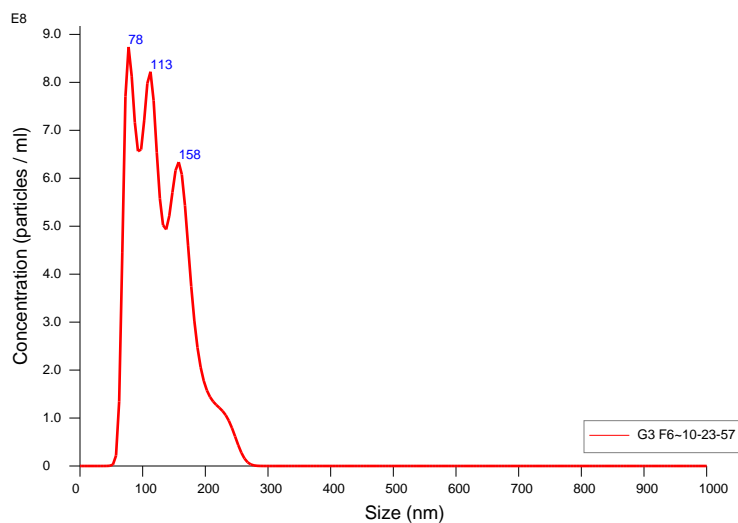
Mean: 92.1 nm
Mode: 76.9 nm
SD: 30.6 nm
D10: 65.6 nm
D50: 84.5 nm
D90: 139.7 nm

Stats: Mean +/- Standard Error

Mean: 92.1 +/- 0.0 nm
Mode: 76.9 +/- 0.0 nm
SD: 30.6 +/- 0.0 nm
D10: 65.6 +/- 0.0 nm
D50: 84.5 +/- 0.0 nm
D90: 139.7 +/- 0.0 nm
Concentration: 2.30e+10 +/- 0.00e+00 particles/ml
12.6 +/- 0.0 particles/frame
14.7 +/- 0.0 centres/frame



Intensity / Size graph for Experiment:
G2 F8 2021-09-16 14-59-27



Error bars indicate + / - 1 standard error of the mean

Included Files

G3 F6 2021-06-22 10-23-57

Details

NTA Version: NTA 3.4 Build 3.4.003
Script Used: SOP Standard Measurement 10-23-15AM 22Jun2021.txt
Time Captured: 10:23:15 22/06/2021
Operator:
Pre-treatment:
Sample Name:
Diluent:
Remarks:

Capture Settings

Camera Type: sCMOS
Laser Type: Green
Camera Level: 14
Slider Shutter: 1259
Slider Gain: 366
FPS: 25.0
Number of Frames: 749
Temperature: 23.3 °C
Viscosity: (Water) 0.9 cP
Dilution factor: 1 x 10e2
Syringe Pump Speed: 25

Analysis Settings

Detect Threshold: 7
Blur Size: Auto
Max Jump Distance: Auto: 15.2 pix

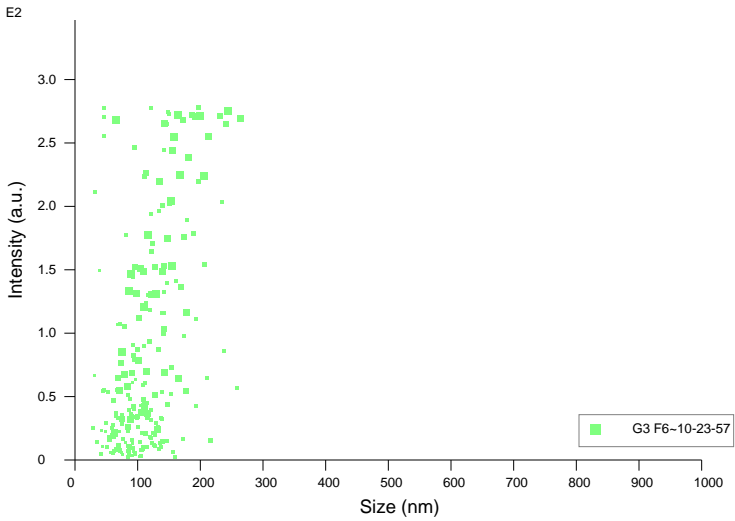
Results

Stats: Merged Data

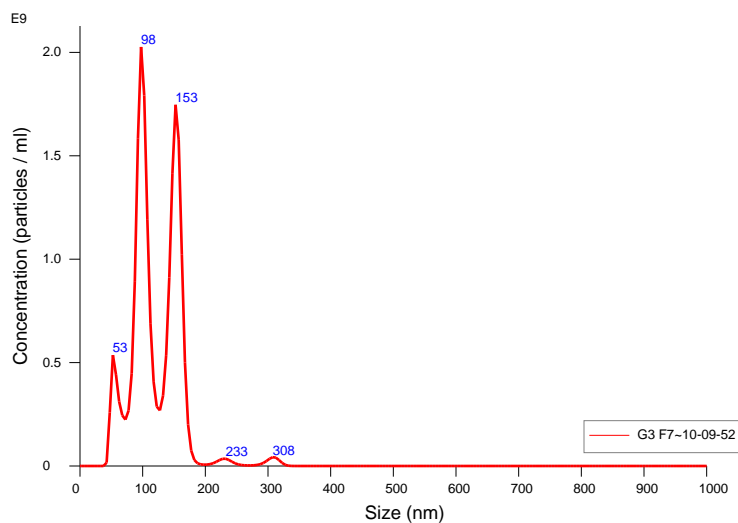
Mean: 129.4 nm
Mode: 78.2 nm
SD: 43.8 nm
D10: 76.8 nm
D50: 122.0 nm
D90: 188.7 nm

Stats: Mean +/- Standard Error

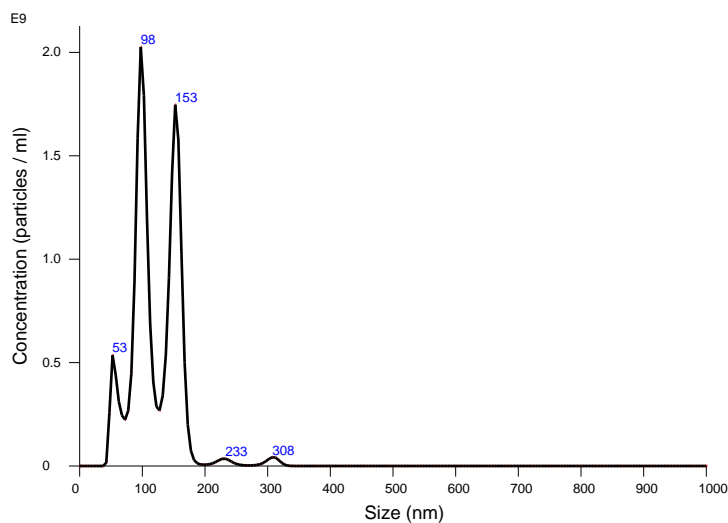
Mean: 129.4 +/- 0.0 nm
Mode: 78.2 +/- 0.0 nm
SD: 43.8 +/- 0.0 nm
D10: 76.8 +/- 0.0 nm
D50: 122.0 +/- 0.0 nm
D90: 188.7 +/- 0.0 nm
Concentration: 1.69e+10 +/- 0.00e+00 particles/ml
9.2 +/- 0.0 particles/frame
10.1 +/- 0.0 centres/frame



Intensity / Size graph for Experiment:
G3 F6 2021-06-22 10-23-15



FTLA Concentration / Size graph for Experiment:
G3 F7 2021-06-22 10-09-10



Averaged FTLA Concentration / Size for Experiment:
G3 F7 2021-06-22 10-09-10
Error bars indicate + / - 1 standard error of the mean

Included Files

G3 F7 2021-06-22 10-09-52

Details

NTA Version: NTA 3.4 Build 3.4.003
Script Used: SOP Standard Measurement 10-09-10AM 22Jun2021.txt
Time Captured: 10:09:10 22/06/2021
Operator:
Pre-treatment:
Sample Name:
Diluent:
Remarks:

Capture Settings

Camera Type: sCMOS
Laser Type: Green
Camera Level: 14
Slider Shutter: 1259
Slider Gain: 366
FPS: 25.0
Number of Frames: 749
Temperature: 22.8 °C
Viscosity: (Water) 0.9 cP
Dilution factor: 1 x 10e2
Syringe Pump Speed: 25

Analysis Settings

Detect Threshold: 7
Blur Size: Auto
Max Jump Distance: Auto: 21.5 pix

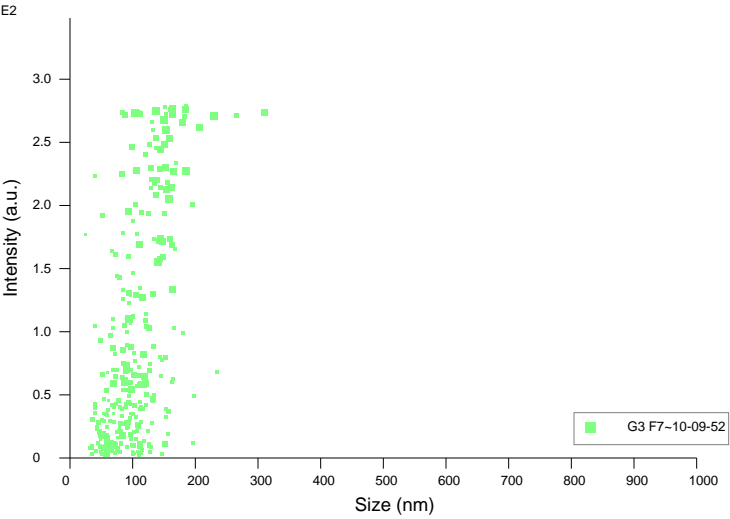
Results

Stats: Merged Data

Mean: 121.0 nm
Mode: 98.3 nm
SD: 40.2 nm
D10: 75.8 nm
D50: 110.9 nm
D90: 161.2 nm

Stats: Mean +/- Standard Error

Mean: 121.0 +/- 0.0 nm
Mode: 98.3 +/- 0.0 nm
SD: 40.2 +/- 0.0 nm
D10: 75.8 +/- 0.0 nm
D50: 110.9 +/- 0.0 nm
D90: 161.2 +/- 0.0 nm
Concentration: 2.07e+10 +/- 0.00e+00 particles/ml
11.3 +/- 0.0 particles/frame
12.3 +/- 0.0 centres/frame



Intensity / Size graph for Experiment:
G3 F7 2021-06-22 10-09-10