

GENE	PRIMER
<i>GAPDH (Glyceraldehyde-3-Phosphate Dehydrogenase)</i>	FW: 5'-CCTCTGACTTCAACAGCGACAC-3' RW: 5'-CACCACCCTGTTGCTGTAGCCA-3'
<i>TNF-α (Tumor necrosis factor α)</i>	FW: 5'-CCTGGTATGAGCCCATCTAT-3' RW: 5'-ACAGGGCAATGATCCCAAAGTA-3'
<i>IL8 (Interleukin 8)</i>	FW: 5'-ACTTAGATGTCAGTGCATAAAGAC-3' RW: 5'-TTATGAATTCTCAGCCCTCTTCAA-3'
<i>IL6 (Interleukin 6)</i>	FW: 5'-CCACTCACCTCTTCAGAACG-3' RW: 5'-CATCTTTGGAAGGTTTCAGGTTG-3'
<i>SOD2 (Superoxide Dismutase 2)</i>	FW: 5'-CTGATTTGGACAAGCAGCAA-3' RW: 5'-CTGGACAAACCTCAGCCCTA-3'
<i>p53 (Tumor Protein 53)</i>	FW: 5'-AGAGTCTATAGGCCCAACCC-3' RW: 5'-GCTCGACGCTAGGATCTGAC-3'
	PROBE
<i>FPR1 (Formyl Peptide Receptor 1)</i>	Hs04235426_s1
<i>FPR2 (Formyl Peptide Receptor 2)</i>	Hs02759175_s1
<i>FPR3 (Formyl Peptide Receptor 3)</i>	Hs00266666_s1
<i>GAPDH (Glyceraldehyde-3-Phosphate Dehydrogenase)</i>	Hs02786624_g1
<i>CCL2 (C-C Motif Chemokine Ligand 2)</i>	Hs00234140_m1
<i>CCL3 (C-C Motif Chemokine Ligand 3)</i>	Hs00234142_m1
<i>CCL5 (C-C Motif Chemokine Ligand 5)</i>	Hs99999048_m1
<i>CCL7 (C-C Motif Chemokine Ligand 7)</i>	Hs00171147_m1
<i>CXCL2 (C-X-C Motif Chemokine Ligand 2)</i>	Hs00601975_m1

Table S1. Primers and probes used for RT-qPCR.

Primary Antibodies	Company	Dilution
Vinculin	Santa Cruz Biotechnology; mouse monoclonal antibody	1:10000
pI κ B- α (ser32/36) (phospho Inhibitor of Nuclear Factor Kappa B α)	Cell Signaling; rabbit monoclonal antibody	1:250
I κ B- α (C-21) (Inhibitor of Nuclear Factor Kappa B)	Santa Cruz biotechnology; mouse monoclonal antibody	1:250
pERK1/2 (th202/tyr204) (phospho Extracellular signal-Regulated Kinases)	Cell Signaling; rabbit monoclonal antibody	1:1000
ERK1/2 (C-9): sc-514302 (Extracellular signal-Regulated Kinases)	Santa Cruz biotechnology; rabbit monoclonal antibody	1:1000
pAkt (ser473) (phospho protein kinase B)	Santa Cruz biotechnology; rabbit monoclonal antibody	1:500
Akt1 (Protein kinase B)	Millipore cat 07416 Lot 28745; mouse monoclonal antibody	1:500
pSTAT3 (tyr705) (phosphor Signal Transducer and Activator of Transcription 3)	Cell Signaling; rabbit monoclonal antibody	1:500
STAT3 (F-2): sc-8019 (Signal Transducer and Activator of Transcription 3)	Santa Cruz biotechnology	1:500
Secondary Antibodies	Company	Dilution
Goat Anti-Rabbit HRP	sc-2027 Santa Cruz Biotechnology	1:5000
Goat Anti-Mouse HRP	sc-2025 Santa Cruz Biotechnology	1:5000

Table S2. Antibodies used for Western Blot analysis.

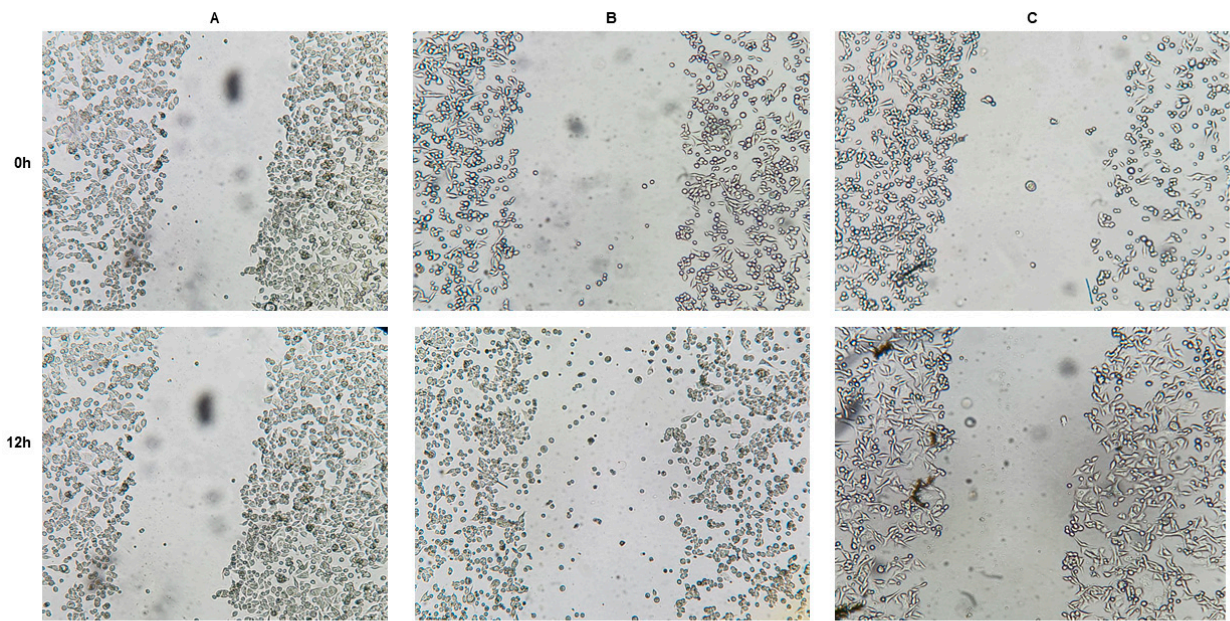


Figure S1. *Cau* prevents *Hp*(2-20)-induced cell migration. Cell migration by in vitro scratch assay was performed on AGS cells differently treated: (A) untreated; (B) *Hp*(2-20) 25 μ M; (C) *Cau* 15 μ M for 30 minutes and then *Hp*(2-20) 25 μ M. Cells were incubated for 12 hours and pictures were captured before and after cell incubation.

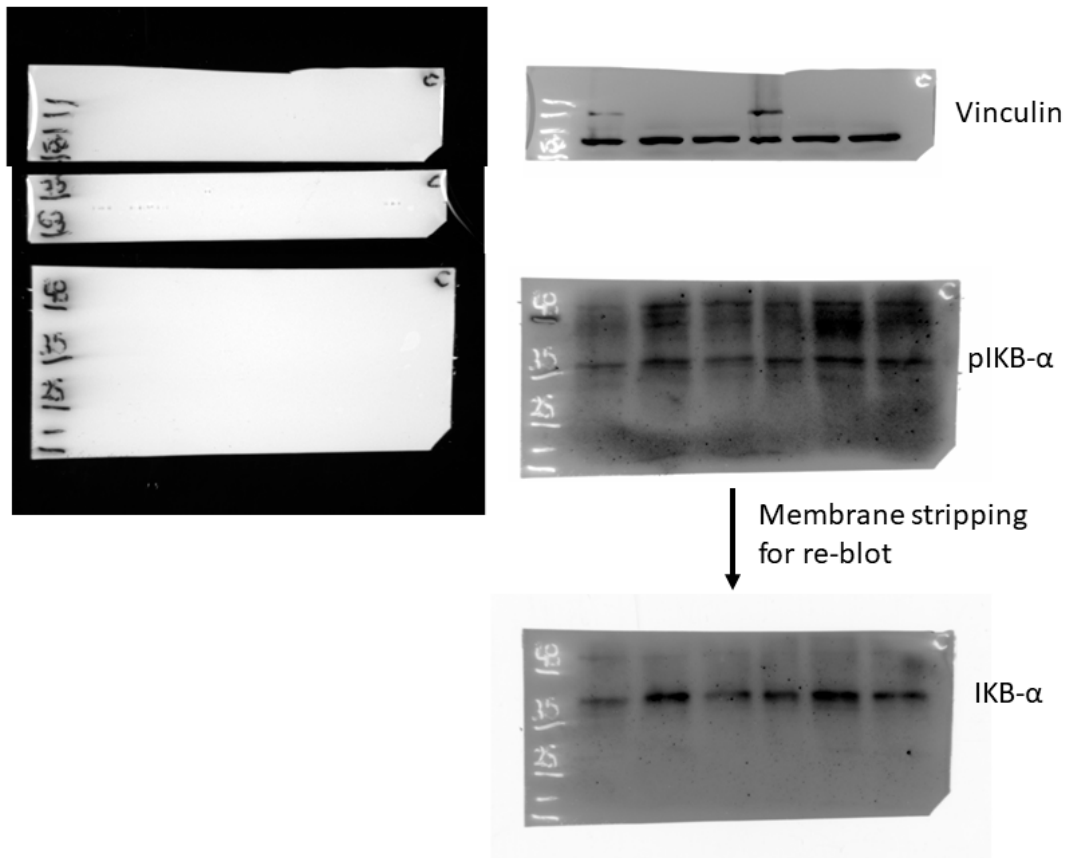


Figure S2. Uncropped and unadjusted Western Blot images corresponding to Figure 2B

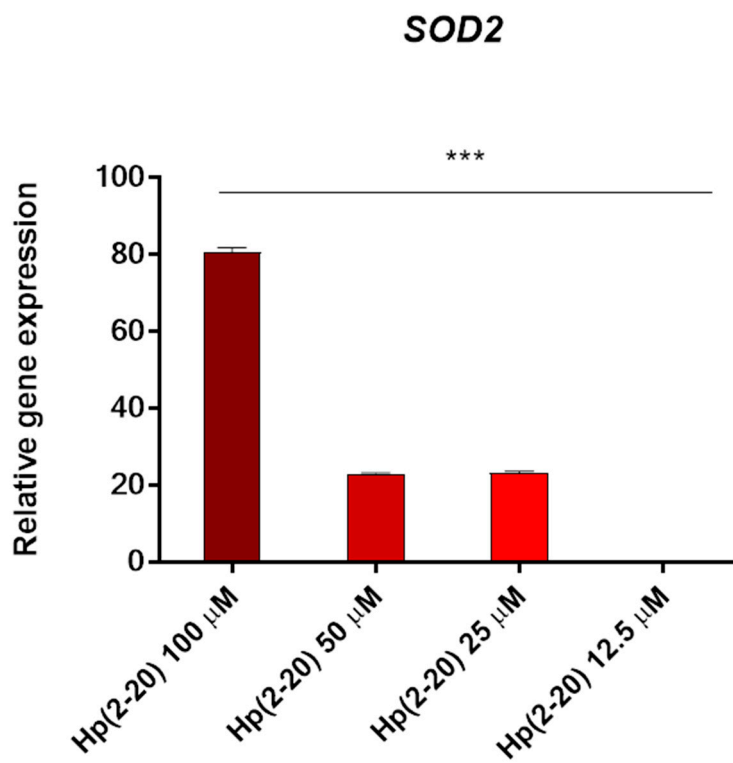


Figure S3. *Hp(2-20)* increases *SOD2* gene in a dose-dependent manner. Relative gene expression of *SOD2* by quantitative real-time PCR (qPCR) in cells treated with *Hp(2-20)* at different concentrations, as indicated. All samples were normalized to GAPDH as reference housekeeping gene. Furthermore, relative gene expression was normalized to basal activity (untreated control), in order to obtain relative fold expression. Graphs report the results of at least three independent experiments, represented as means \pm SD. Statistical analysis was performed by GraphPad Prisma software, using one-way ANOVA followed by Bonferroni post-hoc correction. *** $p < 0.0001$.