

Figure S1. The effect of nutrient concentration in the inoculum on (a) curvature and (b) intensity of fluorescence of germ tubes of *B. squamosa* at 8 HPI on the onion leaf surface. Error bars representing standard error, unpaired *t*-test, * $p < 0.05$.

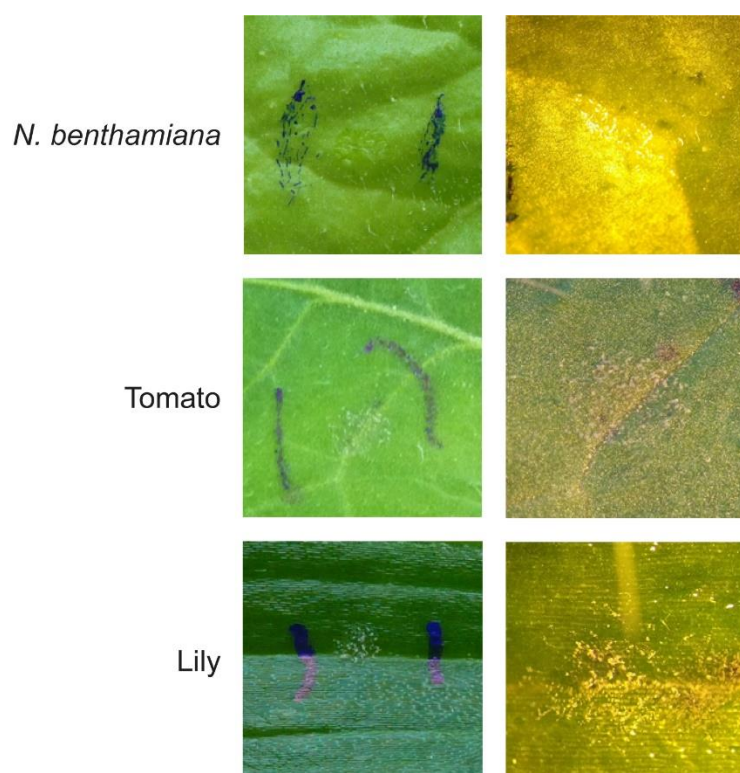


Figure S2. Different plant species inoculated with *B. aclada* at 72 HPI. Not only onion but also non-host plants tomato and lily show sporulation.

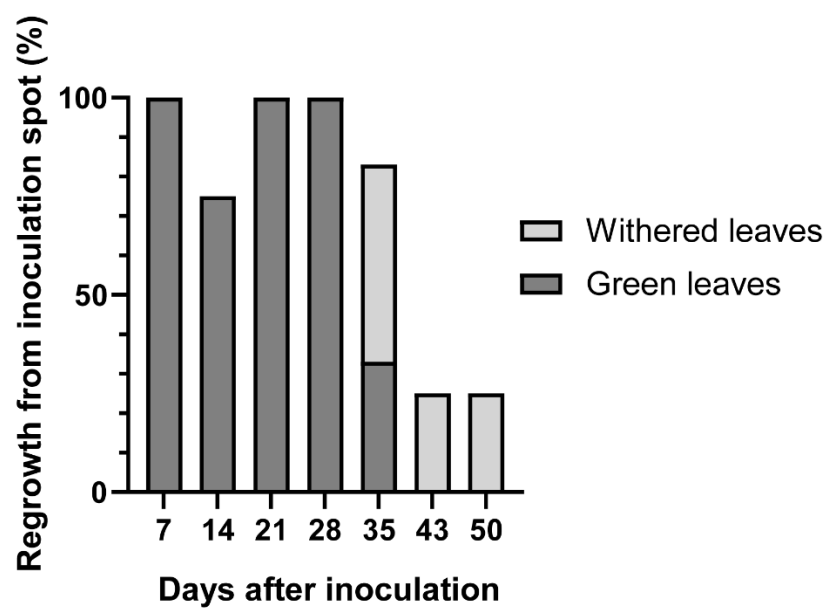


Figure S3. *B. aclada* long term infection assay. Regrowth from inoculated leaf segments over time.