

Supplementary figure

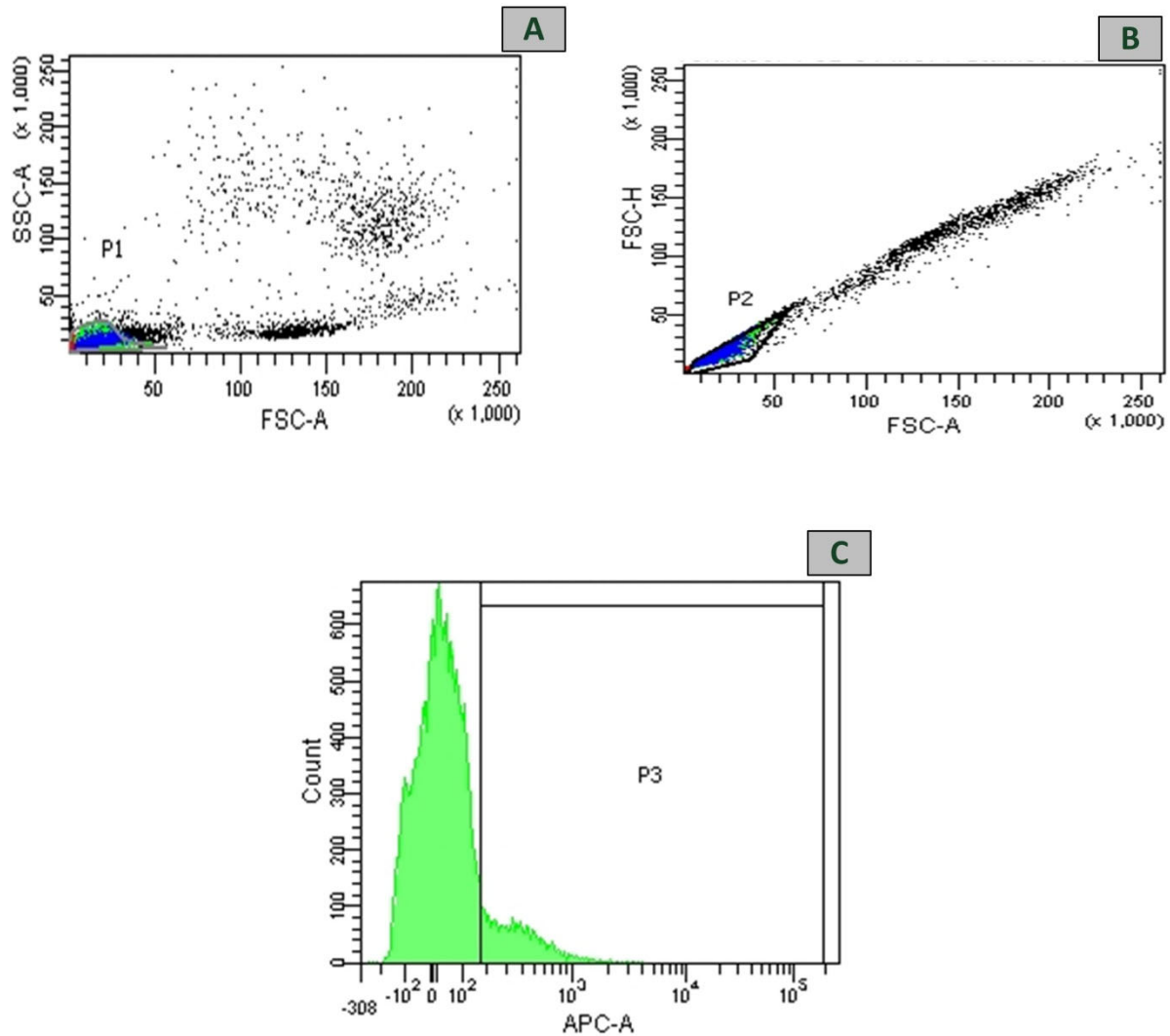


Figure S1. Representative scatter plots and histogram depicting the spread of whole blood. A) Platelets were gated on forward (FSC-A) and side scatter (SSC-A) properties. Due to their small size and less internal complexity platelets aggregate at the bottom left corner in the scatter plot (P1). B) The singlet population was gated (P2) using forward scatter area and height. Thus aggregated cells were excluded from the analysis in order to accurately analyse data. C) The histogram shows platelet population gated (P3) based on the expression of CD41a⁺ events.