

Figure S1. Cytokine expression pattern of monocytes cultivated on the different bone substitutes. The graphs show the cytokine concentration (y -axis) in relation to the granular size (x -axis), pore size (z -axis) and granular shape. The granular shape is displayed as the shape of each individual value: round shape – round value points, polygonal – square shaped value points. (A) I-CAM, (B) V-CAM, (C) VEGF, (D) TNF- α , (E) IL-6, (F) IL-4, (G) IL-1 β , (H) IL-10, (I) IL-12, (J) RANTES, (K) MIP-1 α and (L) GM-CSF.

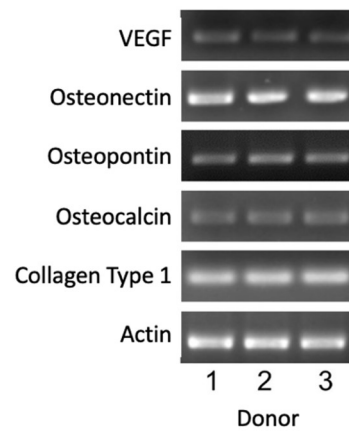


Figure S2. Characterization of the gene expression of the three osteoblast donors using RNA obtained from cells at passage 3.