

Supplementary Information

Supplementary Figures

Figure S1

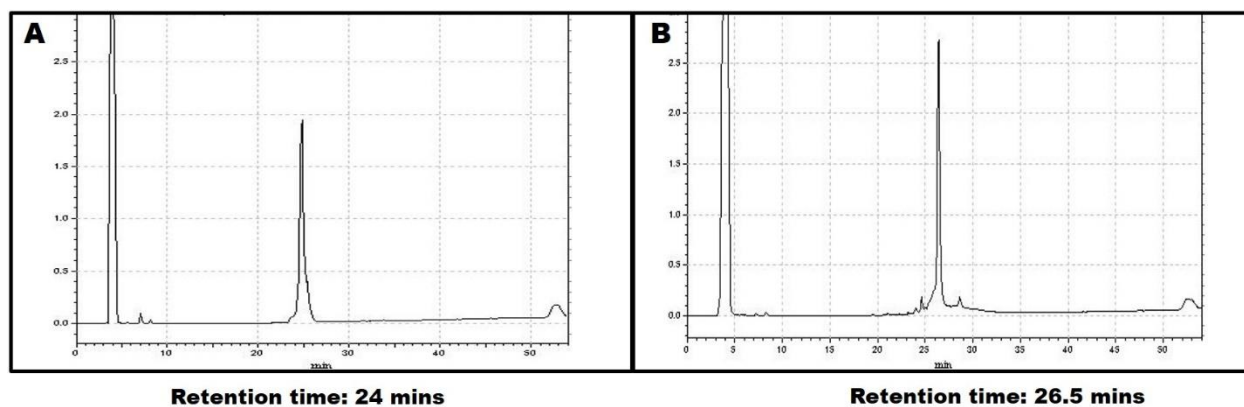


Figure S1: RP-HPLC purification: Elution profile of SARS-CoV-2-C9R (A) and reduced SARS-CoV-2-C9R [reduced with 100mM DTT].

Figure S2

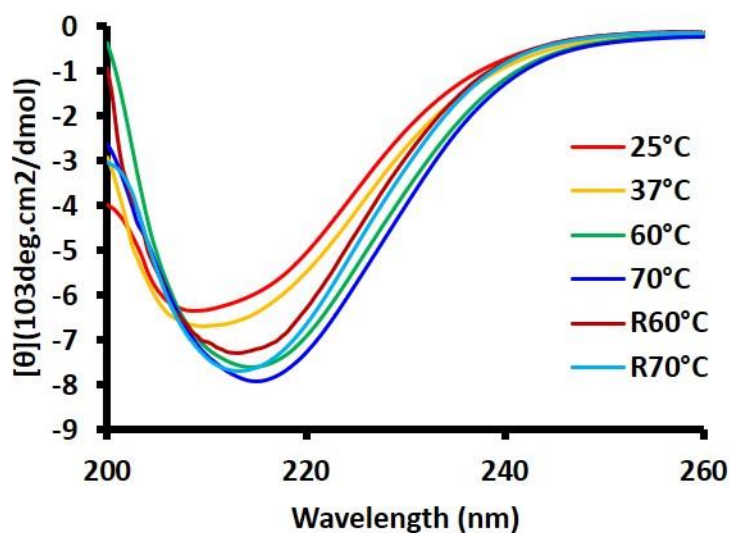


Figure S2: The secondary structures of SARS-CoV-2 were analyzed using far-UV CD region (200–260 nm) at a protein concentration of 0.3 mg/mL in 10mM Hepes buffer, pH 8.0.

Table S1: Estimation of EC50 values based on the reciprocal dilutions of the 5th tail bleeding RBD-C9R serum and immobilized antigens (Native spike (S1) protein and RBD-C9R protein).

| | EC 50 Value | | | |
|---|-------------|--------|--------|--------|
| | Mice 1 | Mice 2 | Mice 3 | Mice 4 |
| Log 10 Reciprocal serum dilution (Spike S1 protein as coating antigen) | 2.68 | 2.70 | 2.87 | 3.00 |
| Log 10 Reciprocal serum dilution (RBD-C9R protein as coating antigen) | 3.98 | 3.24 | 2.98 | 3.59 |