

Figure S1. Schematic comparison of human menstrual cycle and mouse menstrual-like model.

Upper panel depicts a schematic of the human endometrium and its changes through the menstrual cycle consequent upon circulating concentrations of estradiol (E_2) and progesterone (P_4). Lower panel depicts a schematic protocol of the mouse menstrual-like model. Prepubertal (day 19) C57BL/6J female mice were pulse labeled with BrdU (50 mg/g of body weight) twice daily for 4 days. After chasing for 5-6 weeks, female mice were mated with vasectomized male mice (day 0). Pseudo pregnant female mice were identified by vaginal plugs on the next day (day 1). On day 4, endometrial decidualization was induced by intrauterine injection of sesame oil. Tissue was collected at day 4 (before decidualization, denoted by I), day 7 (decidualization, denoted by II), day 9 (breakdown, denoted by III), day 10 (early repair, as denoted by IV), and day 12 (late repair, denoted by V).

Figure S2. Uncropped scans of western blots (Figure 4A). The representative western blotting images is highlighted with the red boxes. N: normoxia; H: hypoxia

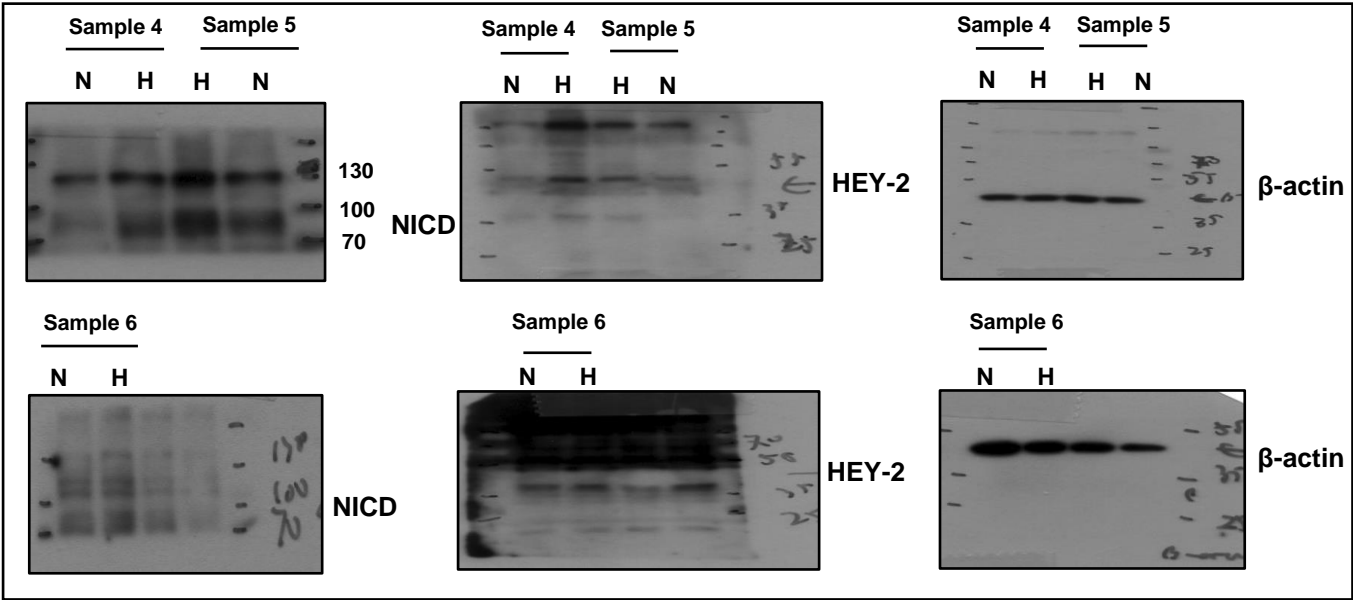
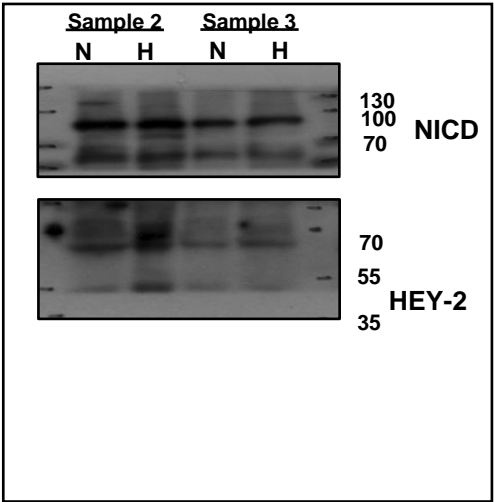
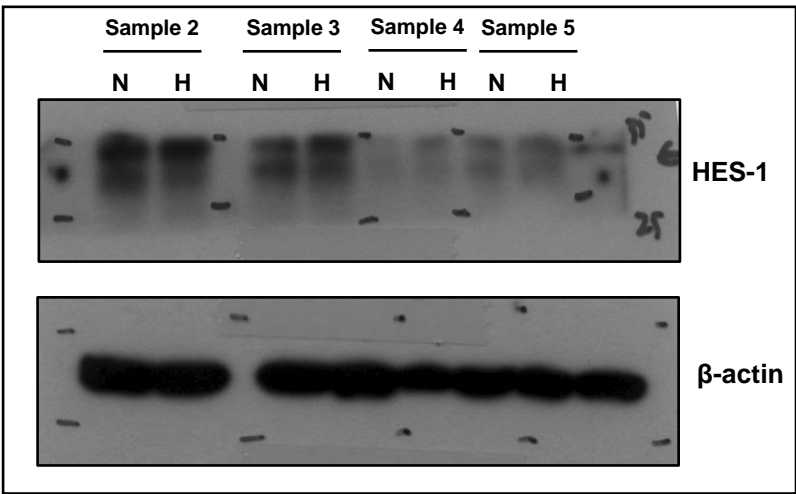
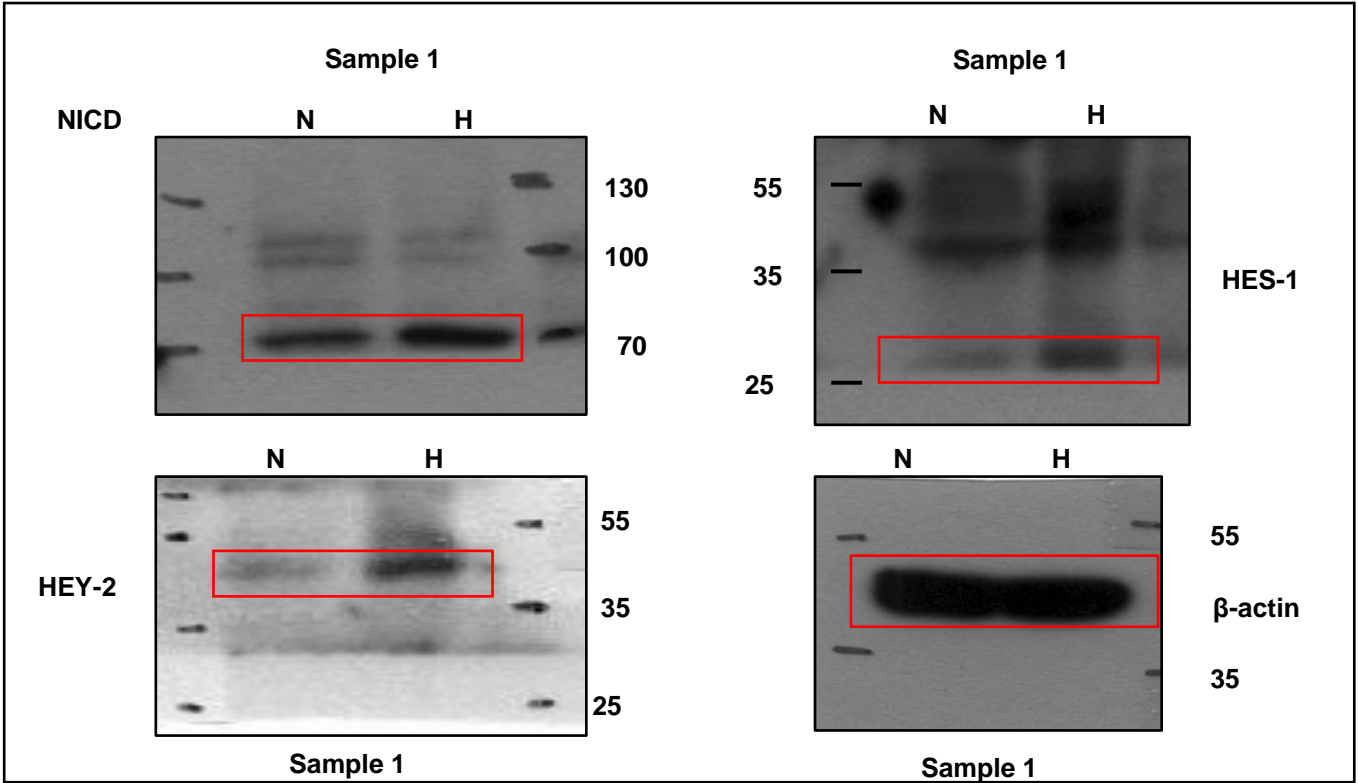


Figure S3. Uncropped scans of western blots (Figure 4E). The representative western blotting images is highlighted with the red boxes.

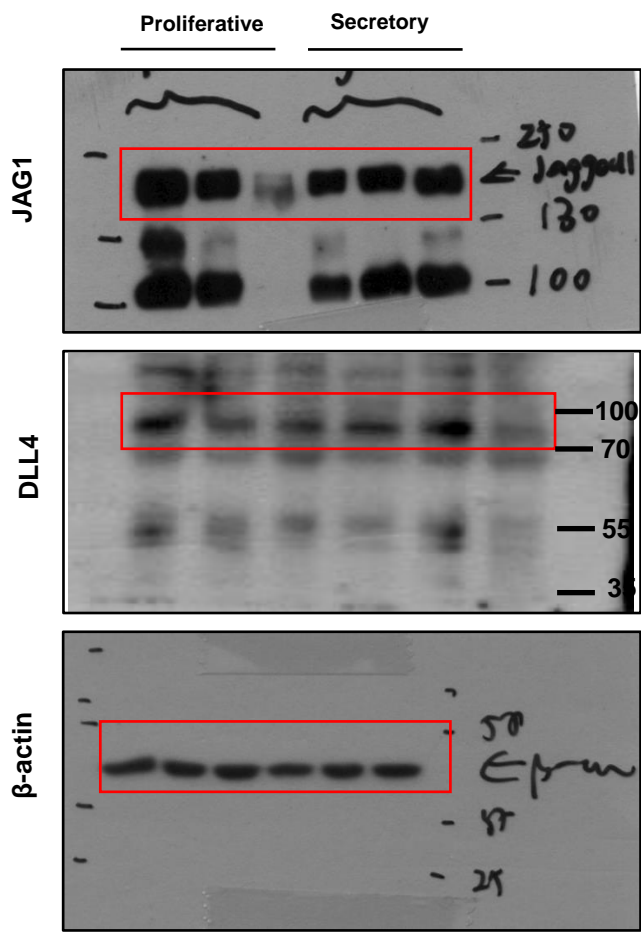
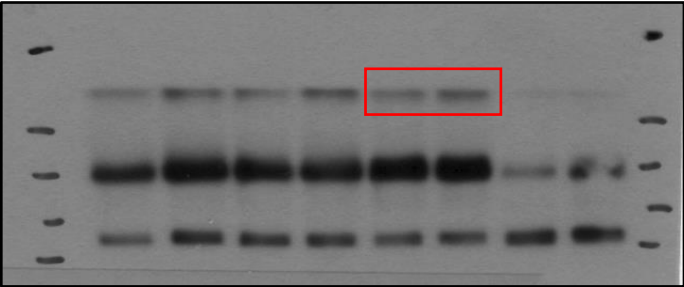


Figure S4. Uncropped scans of western blots (Figure 4H). The representative western blotting images is highlighted with the red boxes. N: normoxia; H: hypoxia

Sample 1 Sample 2 Sample 3 Sample 4

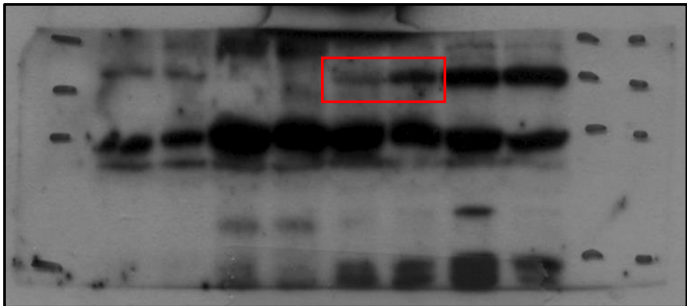
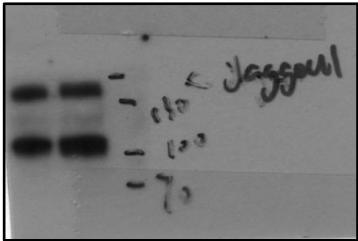
N H N H N H N H



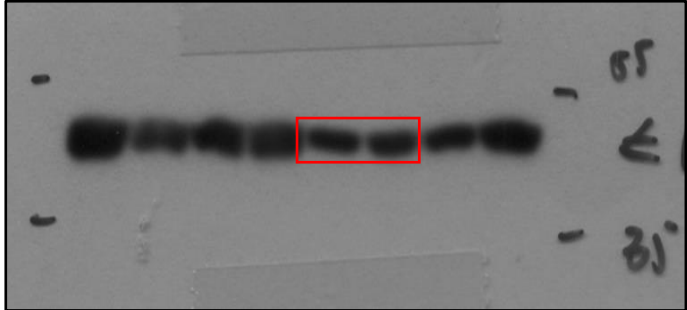
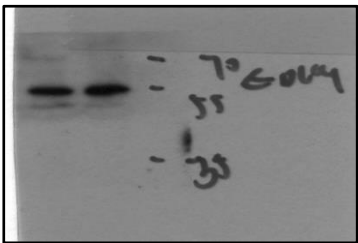
JAG1

Sample 5

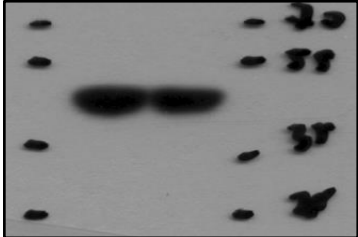
N H



DLL4

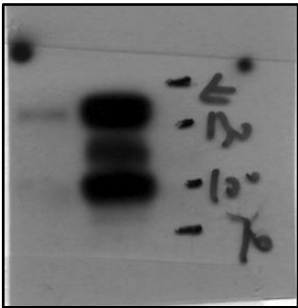


β-actin



Sample 6

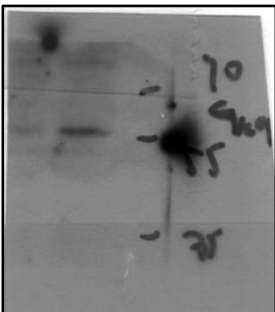
N H



JAG1

Sample 6

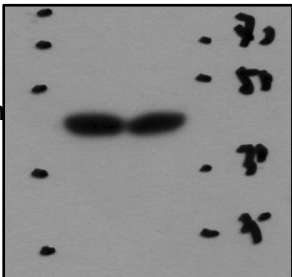
N H



DLL4

Sample 6

N H



β-actin

Figure S5. Uncropped scans of western blots (Figure 6A). The representative western blotting images is highlighted with the red boxes. N: normoxia; H: hypoxia; D: hypoxia+DAPT

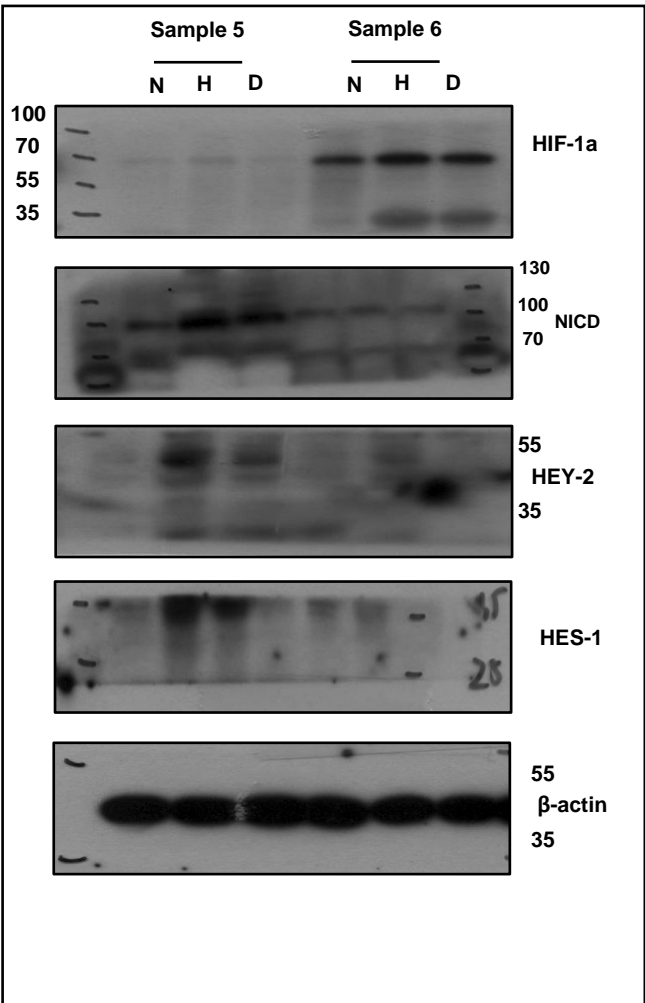
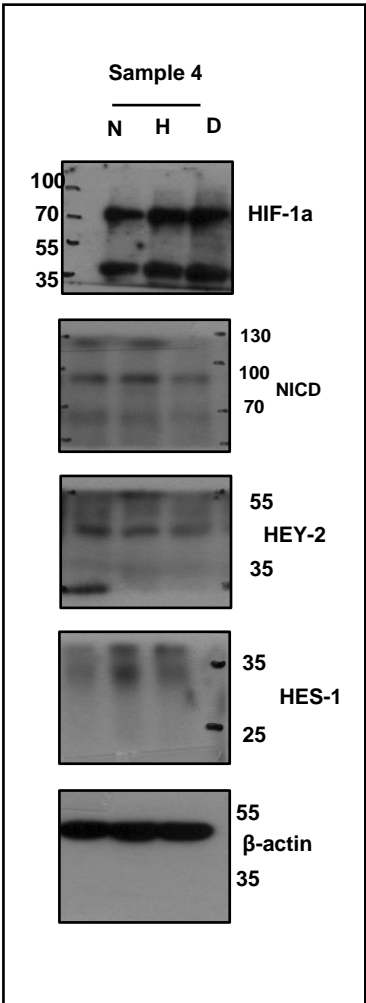
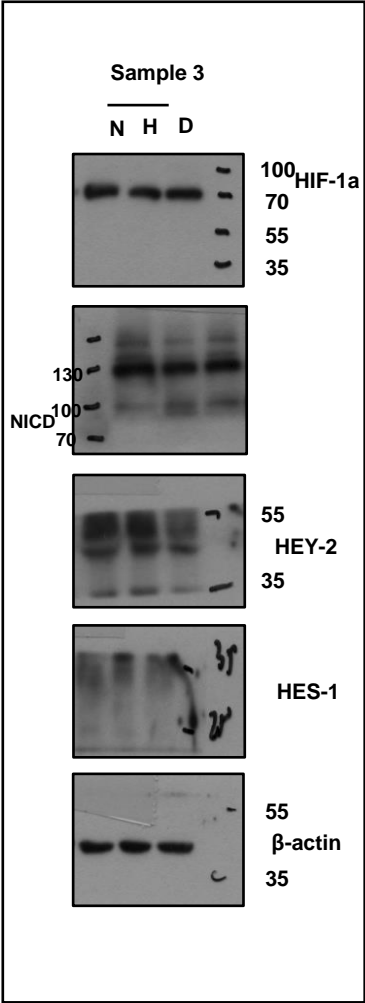
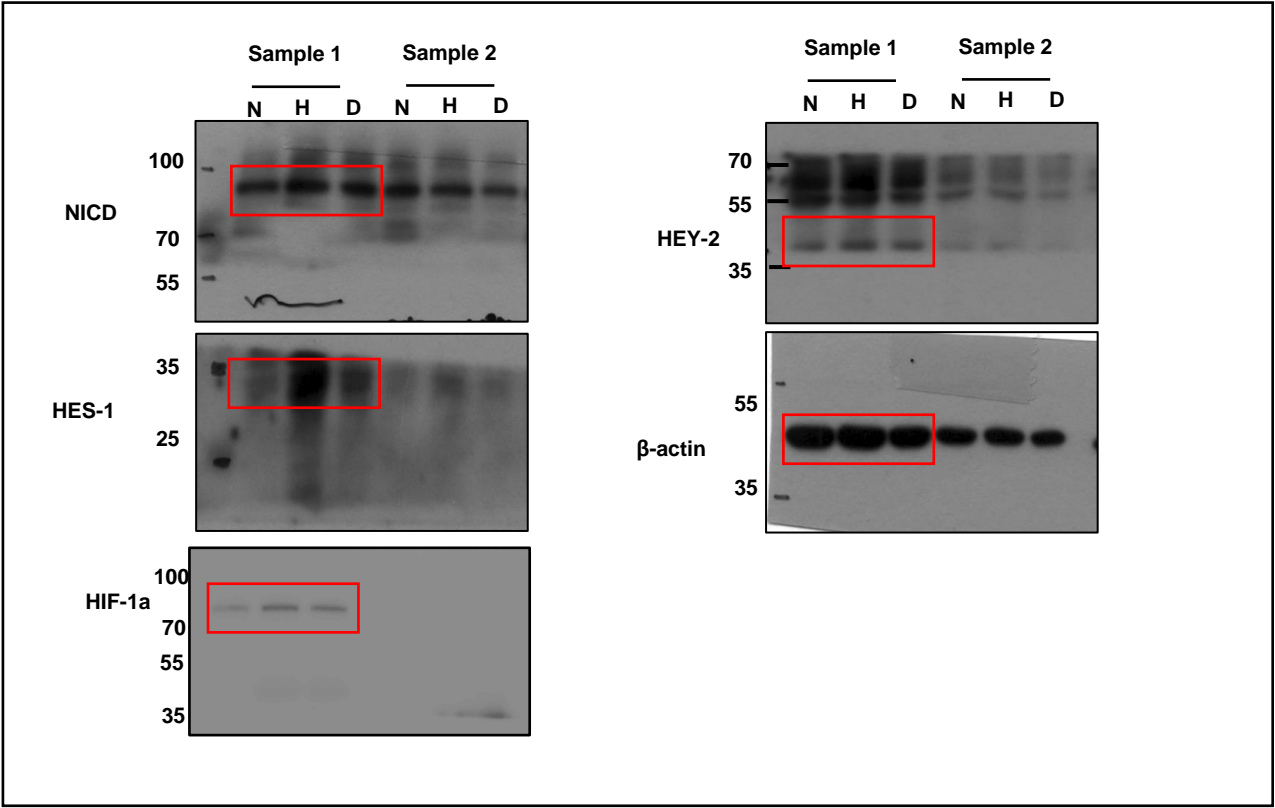


Figure S6. Uncropped scans of western blots (Figure 7C). The representative western blotting images is highlighted with the red boxes. N: normoxia; H: hypoxia; Y: hypoxia+YC-1

