

Video S1. OSCA-32 cells circulating within the CAM vessels' bloodstream, immediately after the intravenous injection.

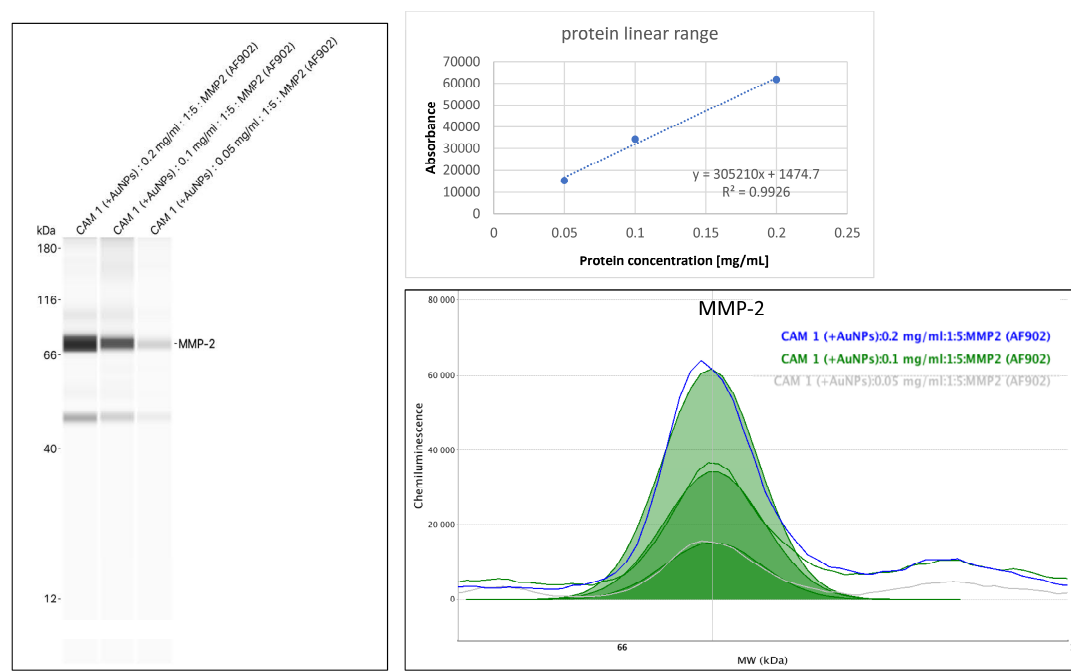


Figure S1. Optimization for automated capillary electrophoretic-based immunoassay method for quantitative MMP-2 expression in the CAM injected with OSCA-8 and OSCA-32 cell lines with or without Au-GSH NPs. Protein linearity.

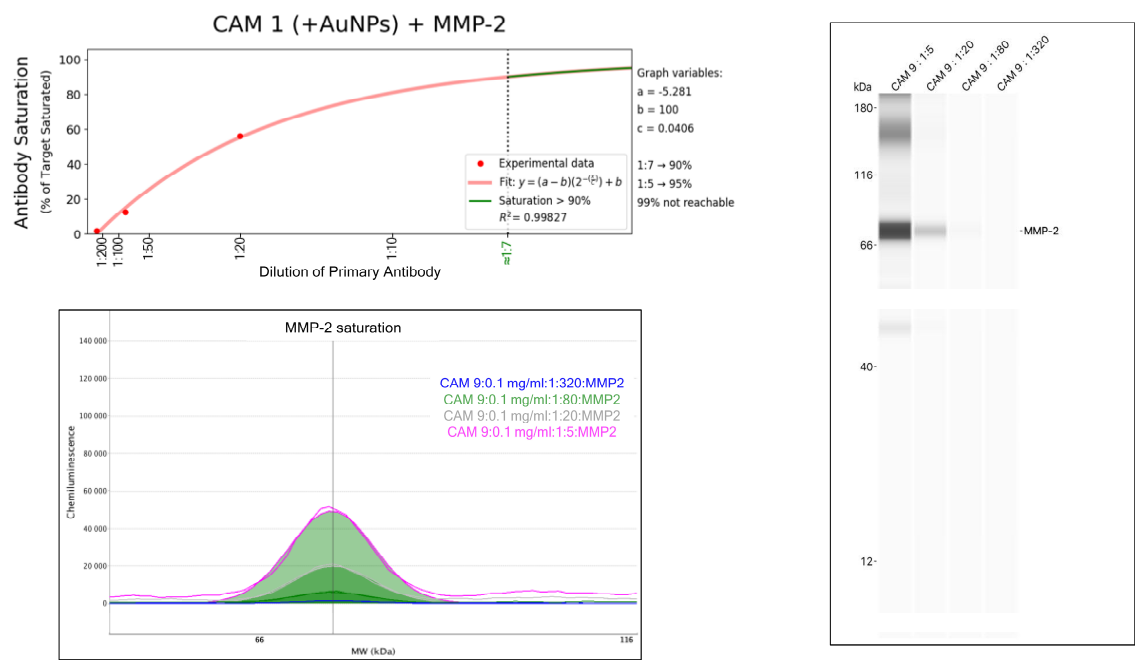


Figure S2. Optimization for automated capillary electrophoretic-based immunoassay method for quantitative MMP-2 expression in the CAM injected with OSCA-8 and OSCA-32 cell lines with or without Au-GSH NPs. Antibody saturation.

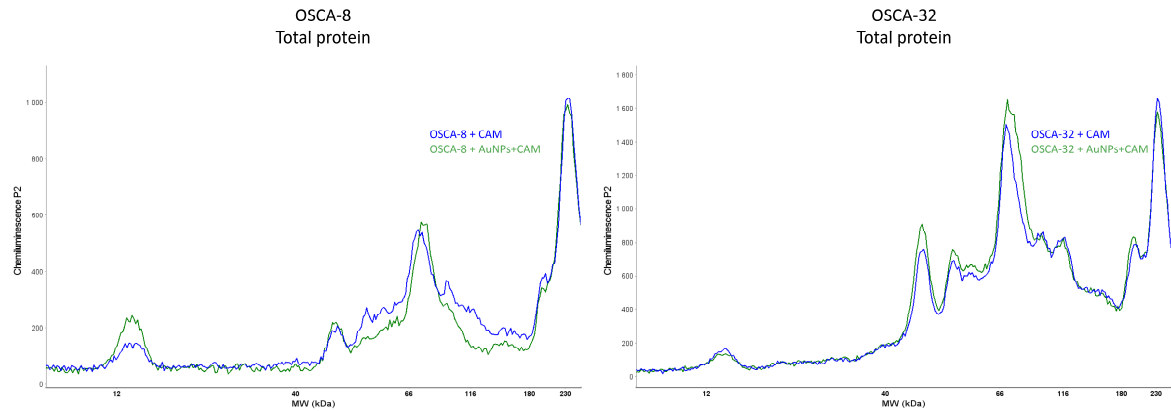


Figure S3. Optimization for automated capillary electrophoretic-based immunoassay method for quantitative MMP-2 expression in the CAM injected with OSCA-8 and OSCA-32 cell lines with or without Au-GSH NPs. Total protein normalization.

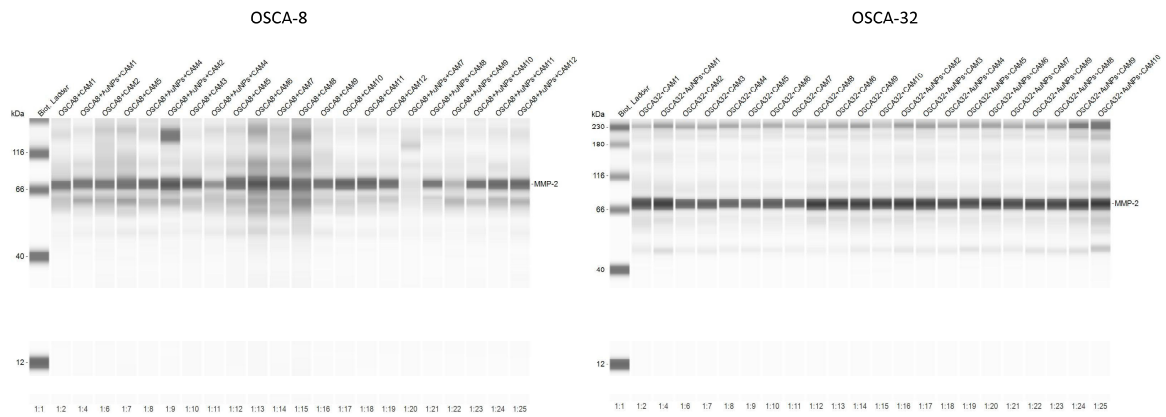


Figure S4. MMP-2 expression.