

Figure S1. Compound **14** 400 MHz Proton NMR (CDCl₃) Full Spectrum 0-12 ppm

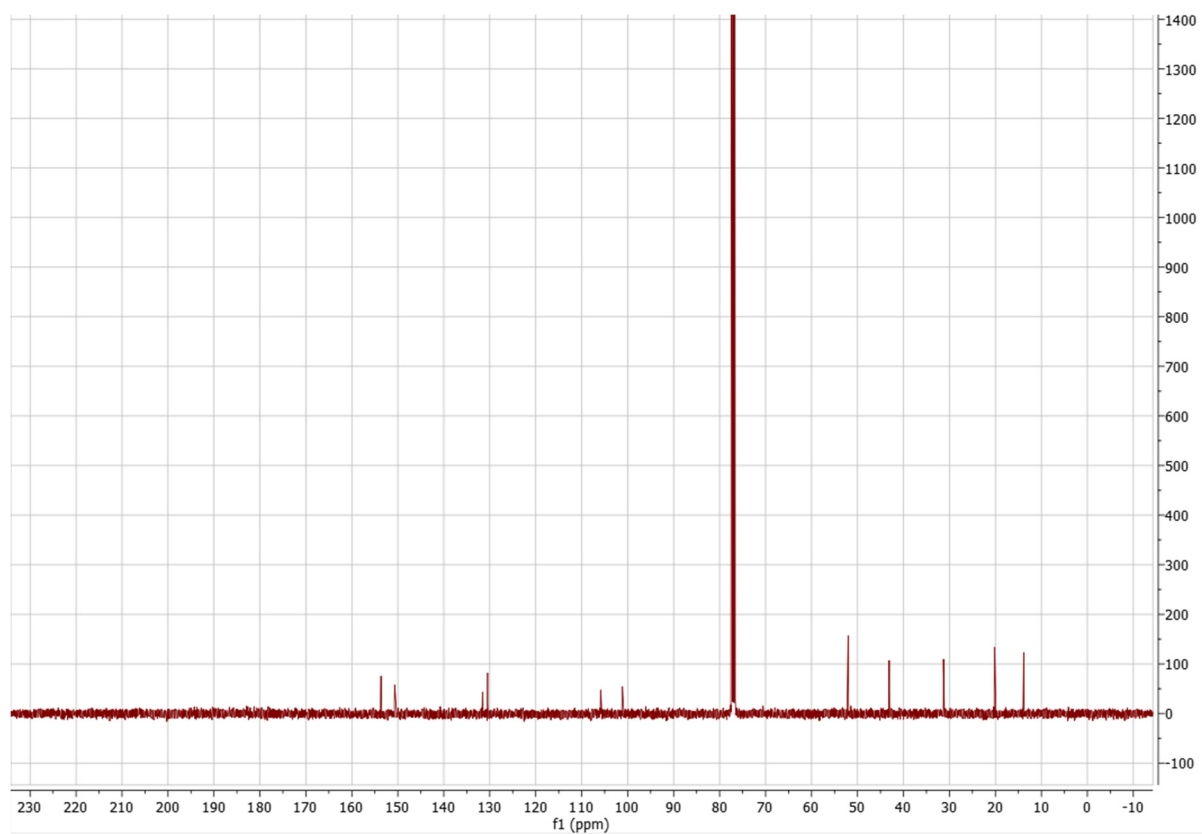


Figure S2. Compound **14** 400 MHz Carbon 13 NMR (CDCl₃)

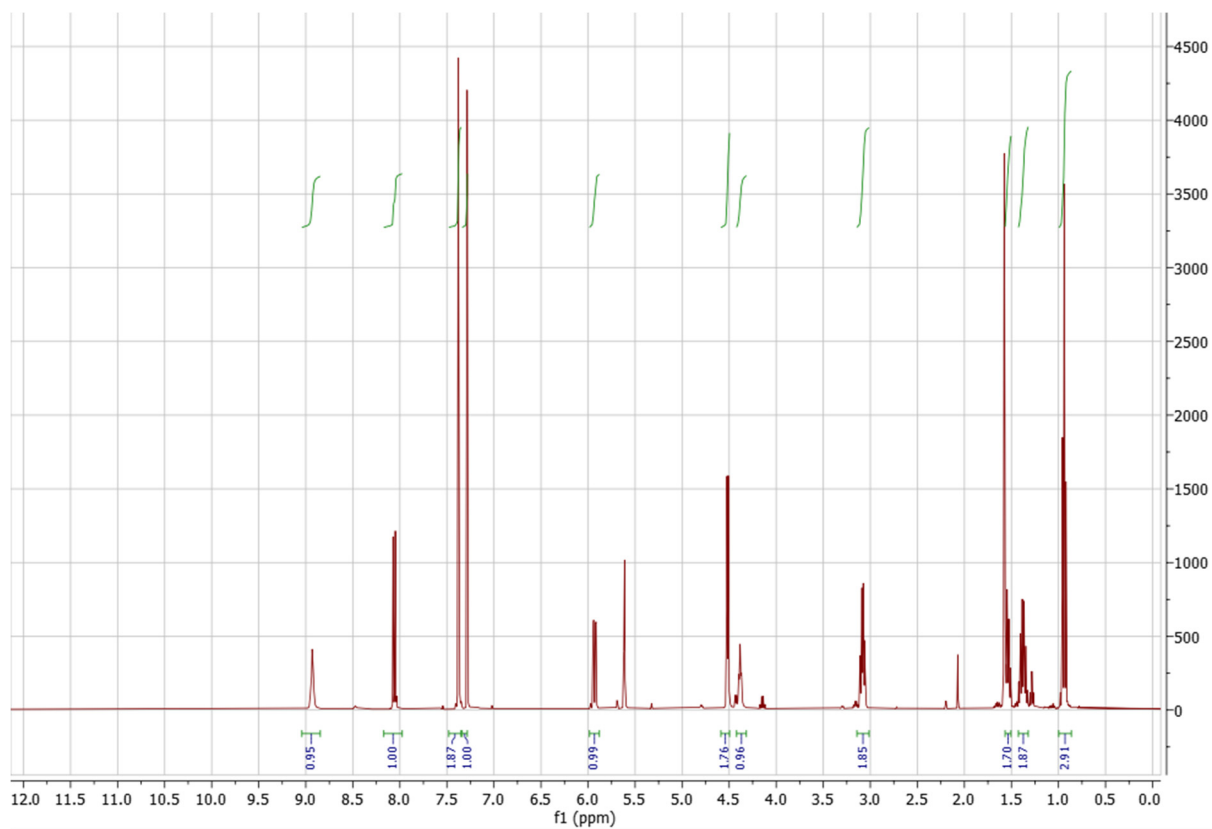


Figure S3. Compound **16** 400 MHz Proton NMR (CDCl₃) Full Spectrum 0-12 ppm

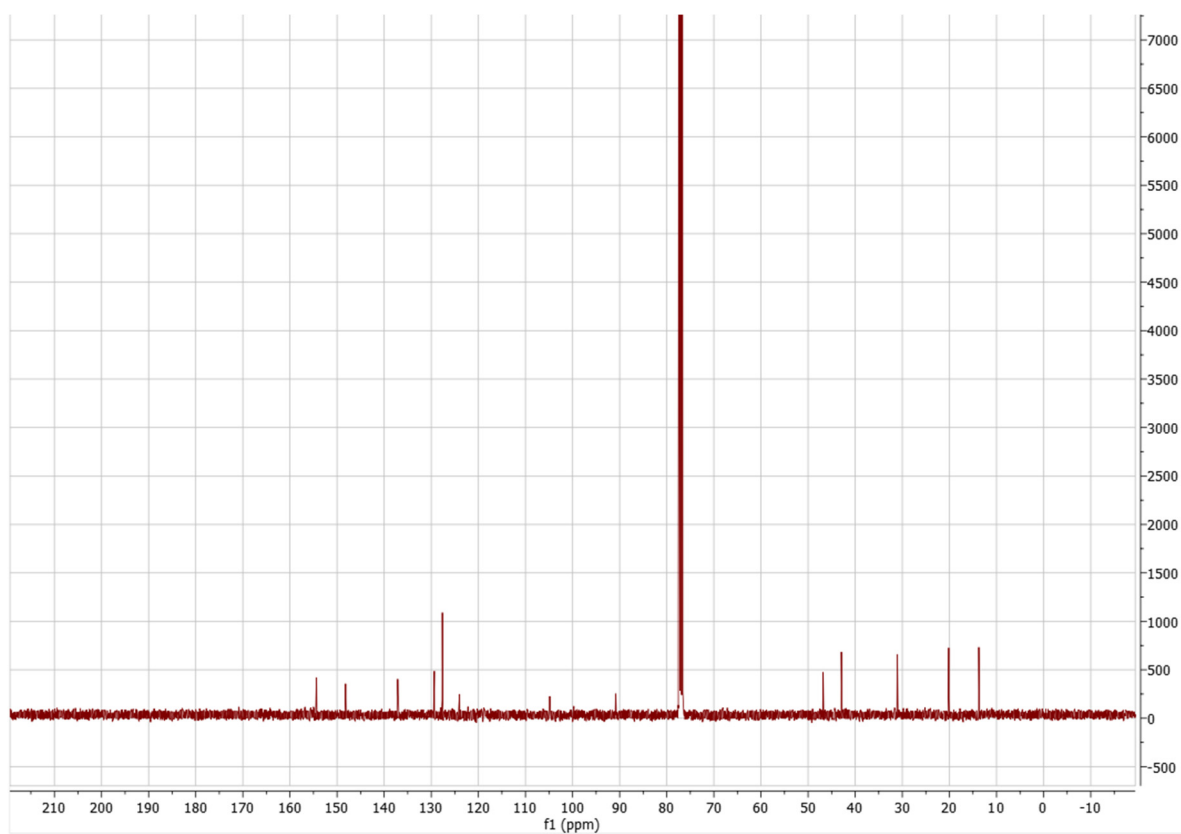


Figure S4. Compound **16** 400 MHz Carbon 13 NMR (CDCl₃)