

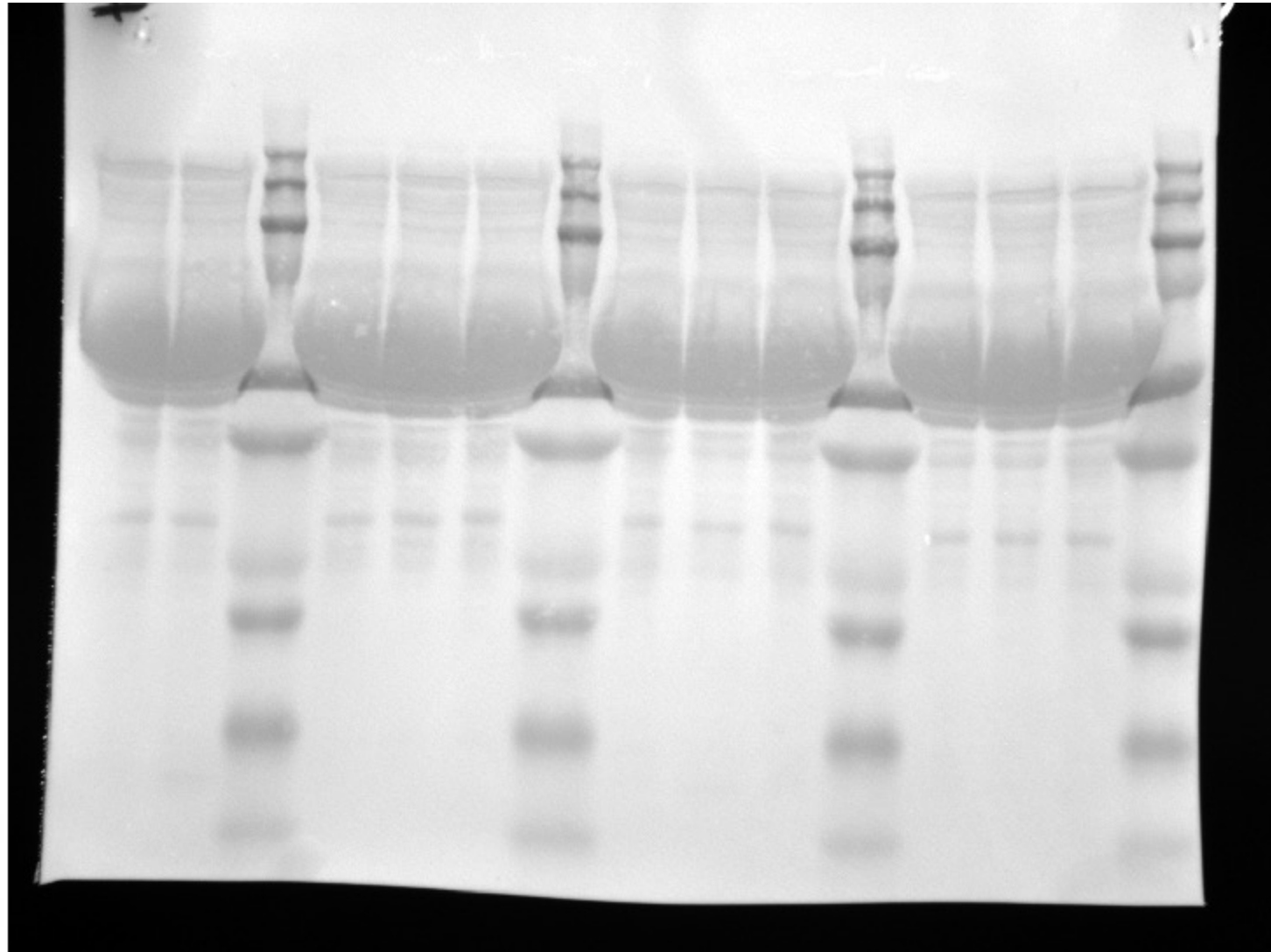
Legend:

C = control

S = sham

F = FXR

St = standard



**Ponceau S
staining**

Blot 1

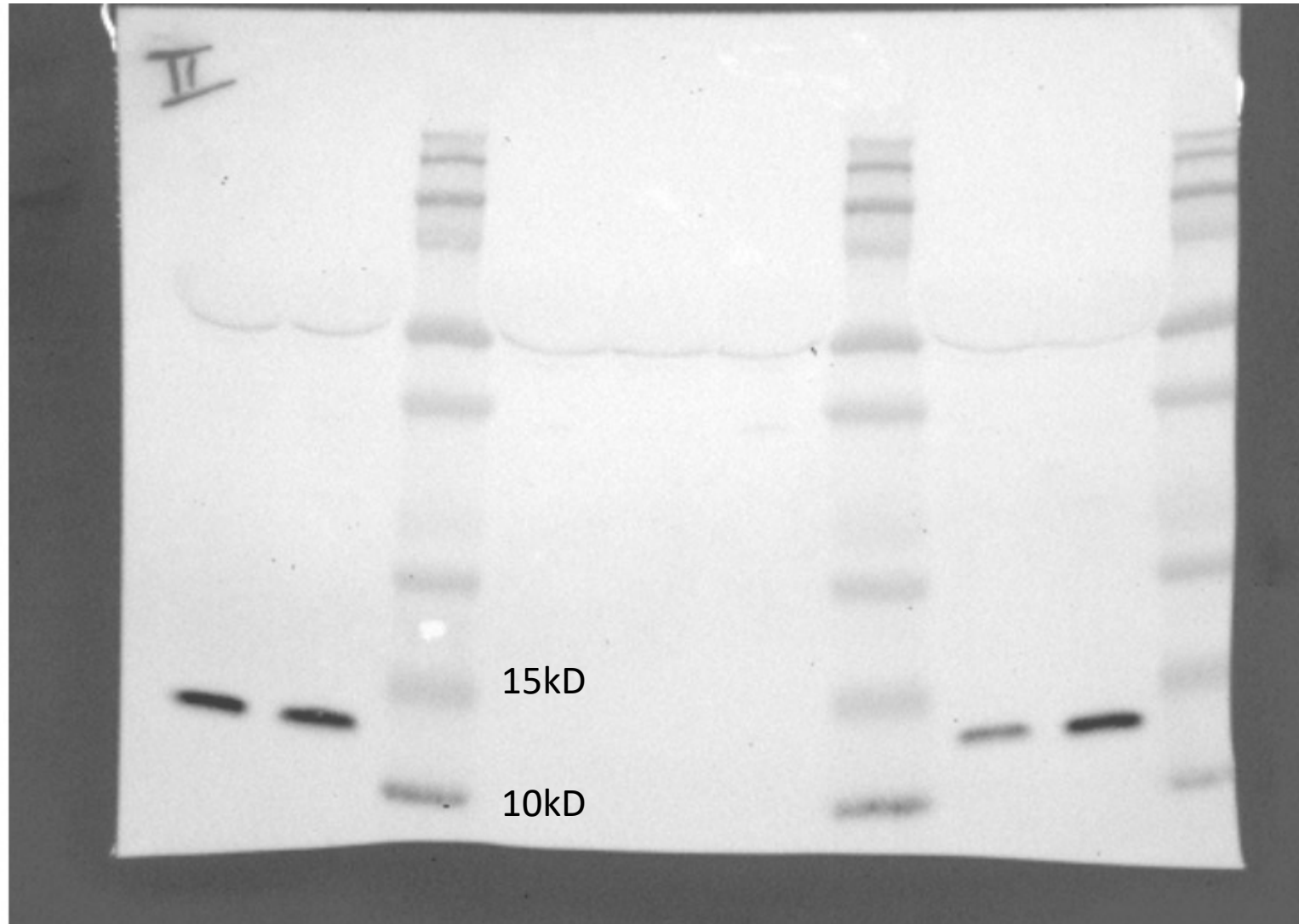
C = control

S = sham

F = FXR

St = standard

C1 C2 St S1 S2 S3 St C1 C2 C3 St F1 F2 F3 St



Legend:

C = control

S = sham

F = FXR

St = standard

C1

C2

St

S4

S5

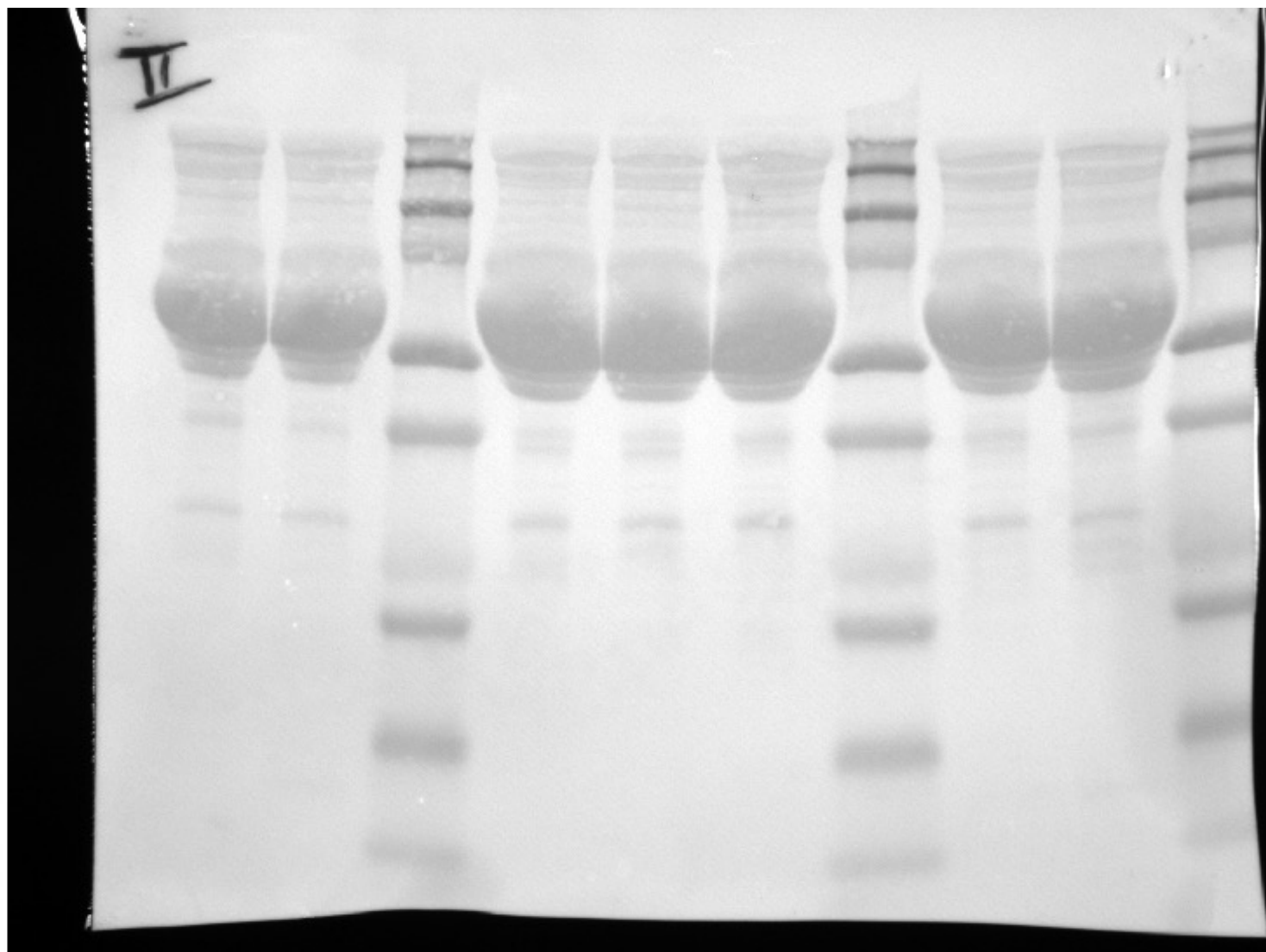
S6

St

C4

C5.

St



**Ponceau S
staining**

Blot 2

C = control

S = sham

F = FXR

St = standard

C1

C2

St

S4

S5

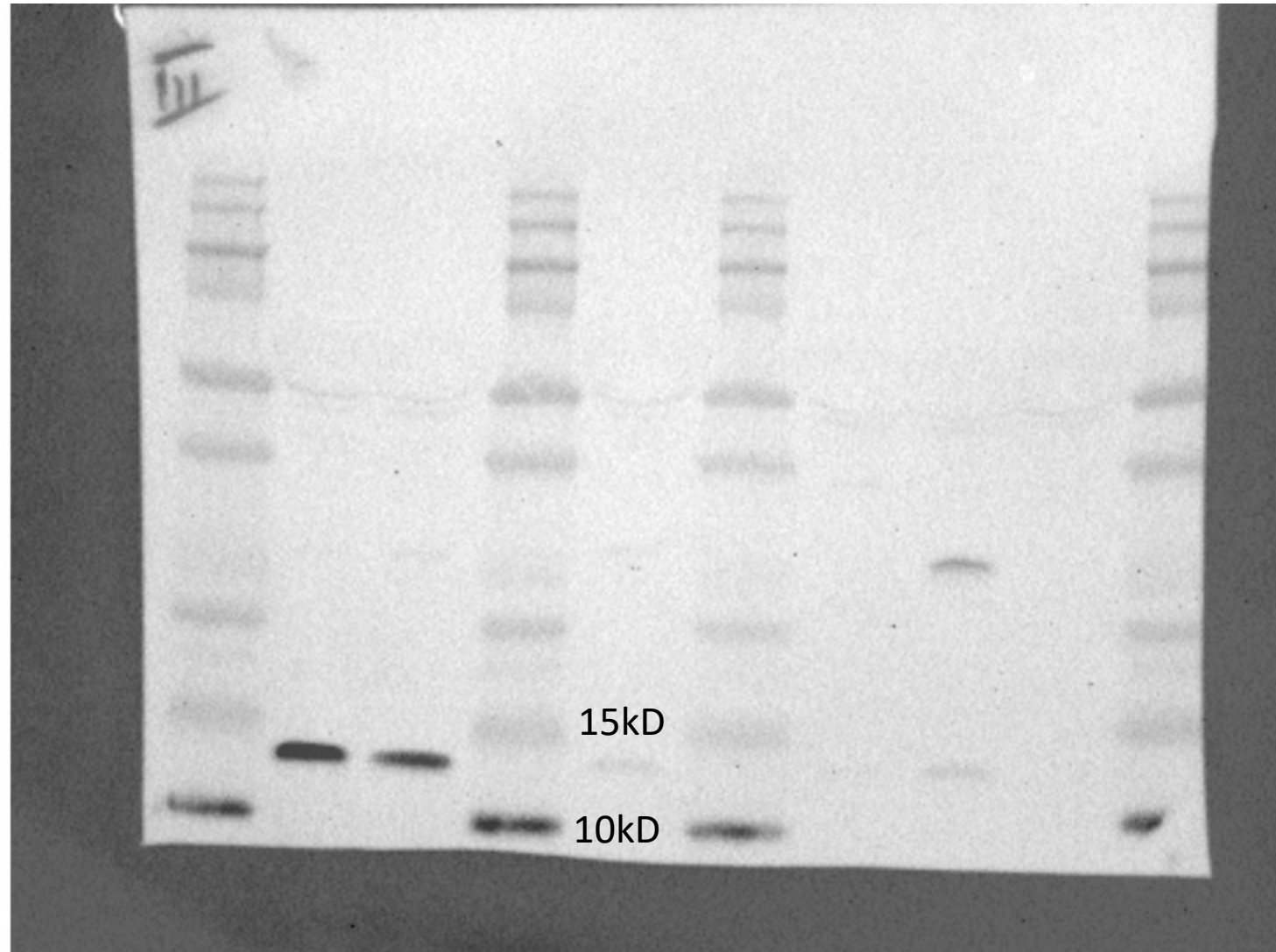
S6

St

C4

C5.

St



Legend:

C = control

S = sham

F = FXR

St = standard

St

C1

C2

St

C6

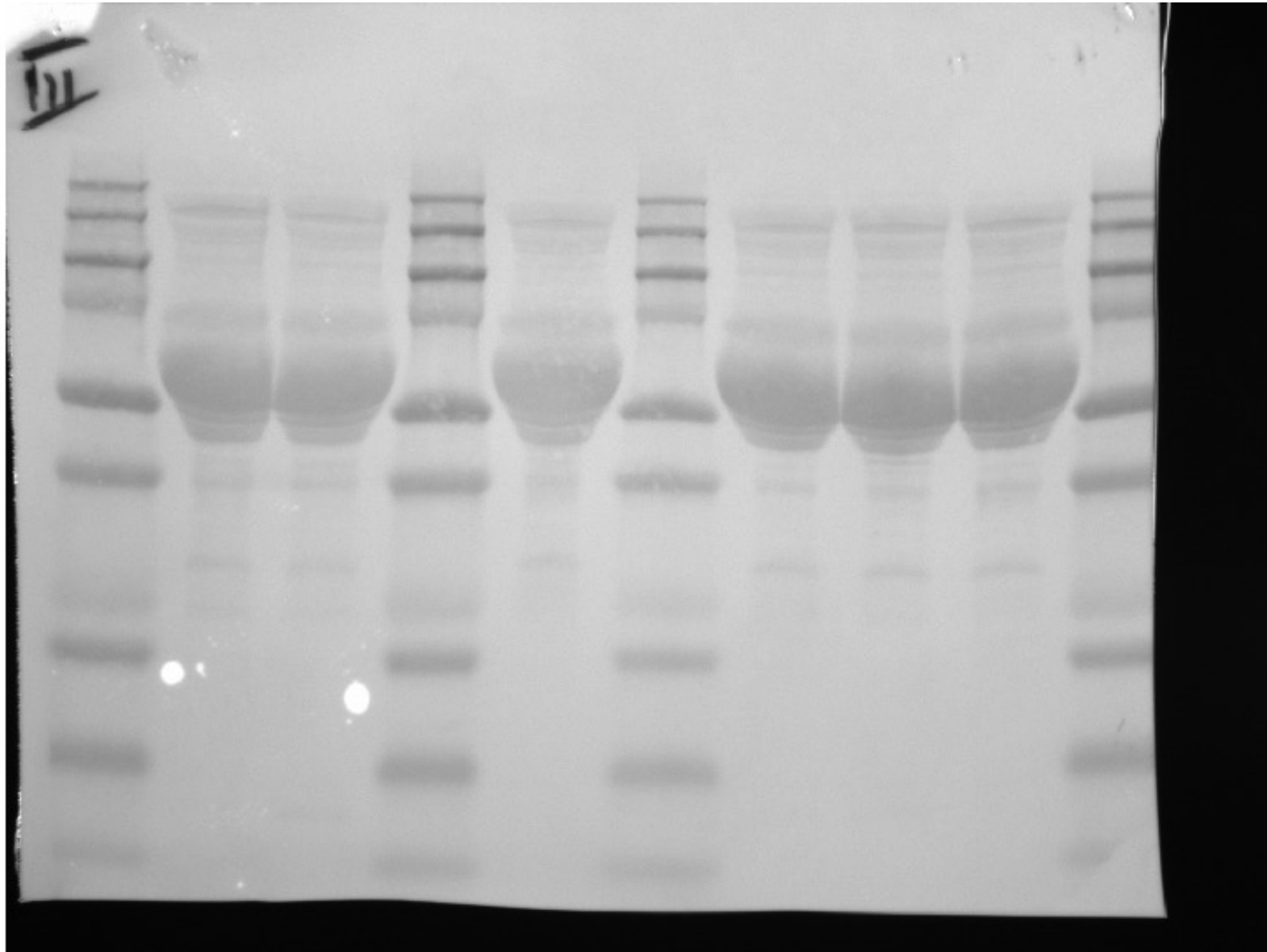
St

F4

F5

F6

St



**Ponceau S
staining**

Blot 3

C = control

S = sham

F = FXR

St = standard

St

C1

C2

St

C6

St

F4

F5

F6

St