

Figure S1. Dephosphorylation of γ -H2AX in line #1 and line #83 after the dose of 20 Gy at 2, 4 and 24 h from irradiation. * $p < 0.01$

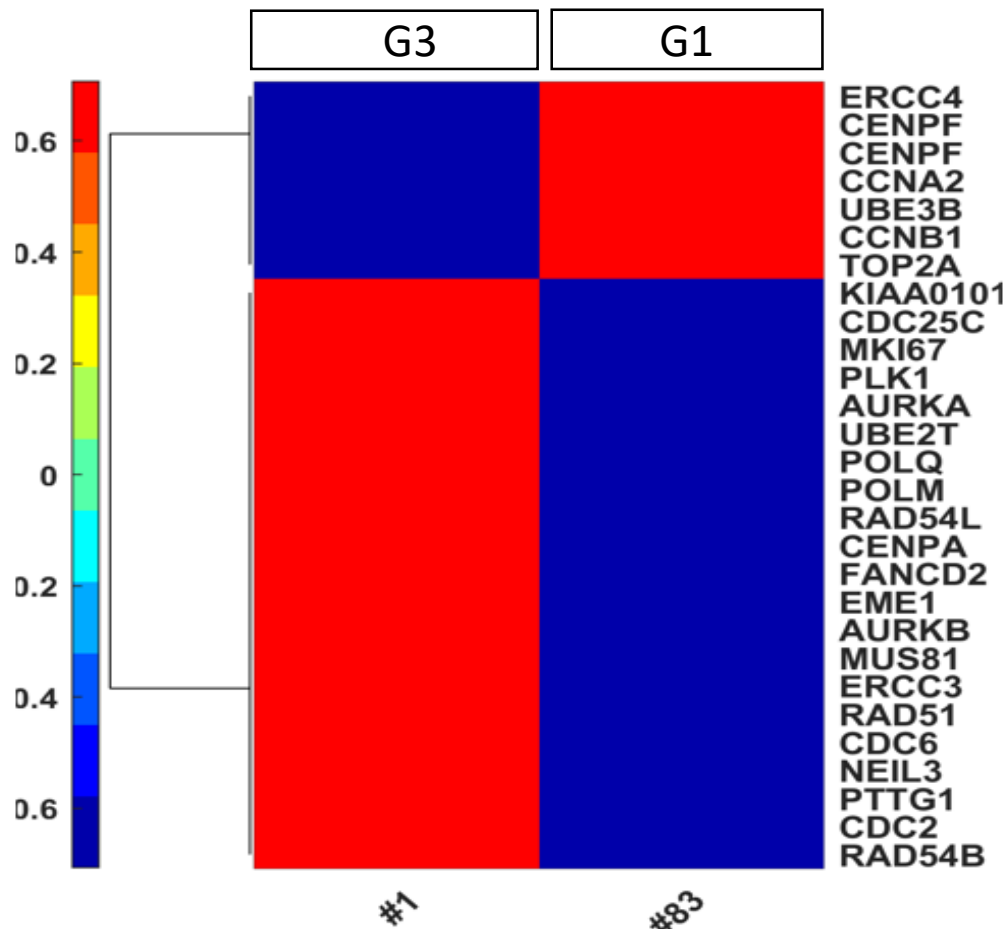


Figure S2. Heatmap of cell lines #1 and #83 illustrating the 2 components as defined by Gobin et al. Standardized expression values are depicted using a red (high) to green (low) color key.

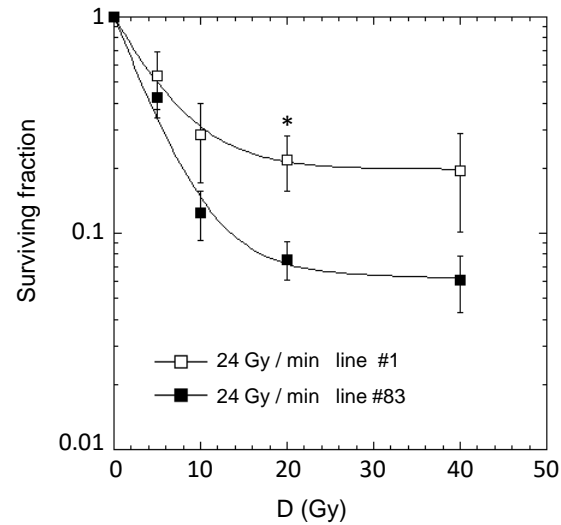
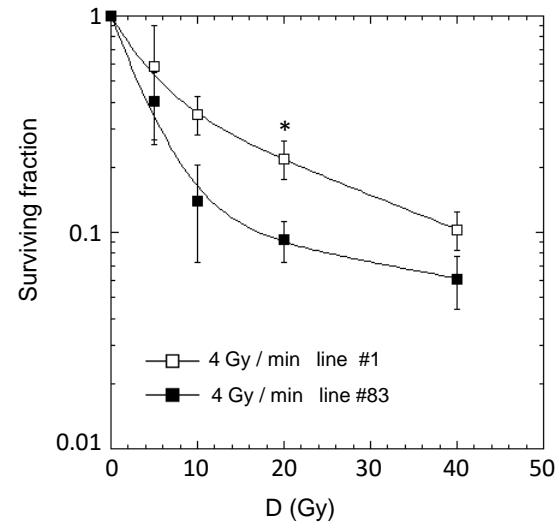


Figure S3: Dose-response curves for GSC cells irradiated in FFF conditions at different dose rates. The error bar represents the standard error of the mean (SEM) coming from at least 2 independent experiments for each irradiation condition used. * $p < 0.01$

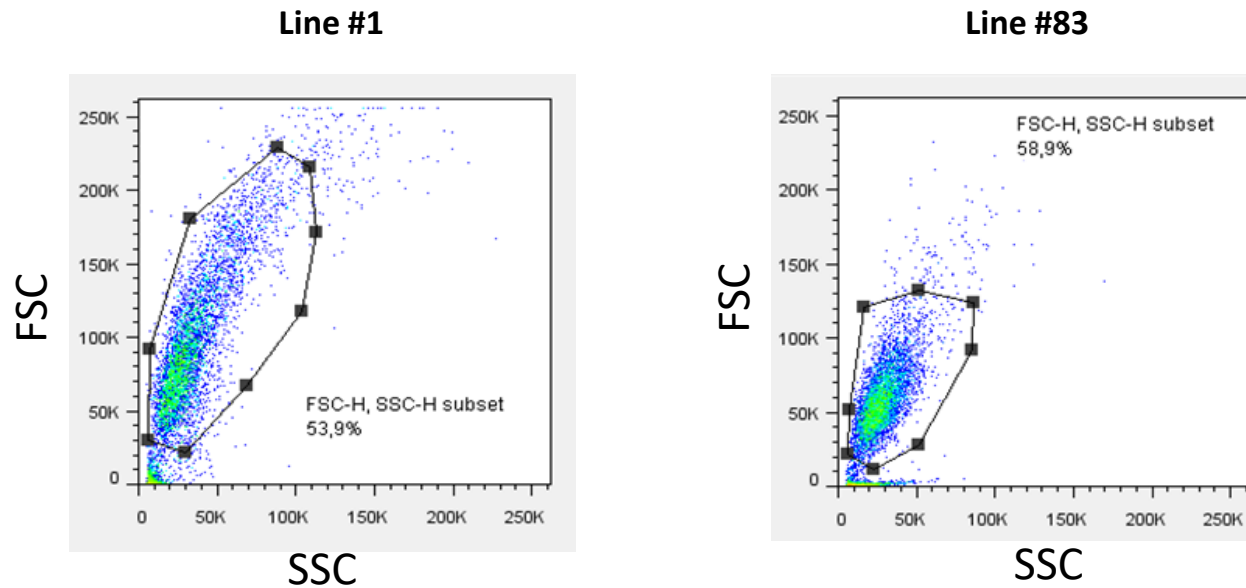


Figure S4. Flow Cytometry forward scatter (FSC) versus side scatter (SSC) of GSCs line #1 and line #83 cells. The former detects scatter along the path of the laser and indicates cell size. The latter detects scatter at a ninety-degree angle relative to the laser and provides information about a cell's internal complexity (i.e. granularity).

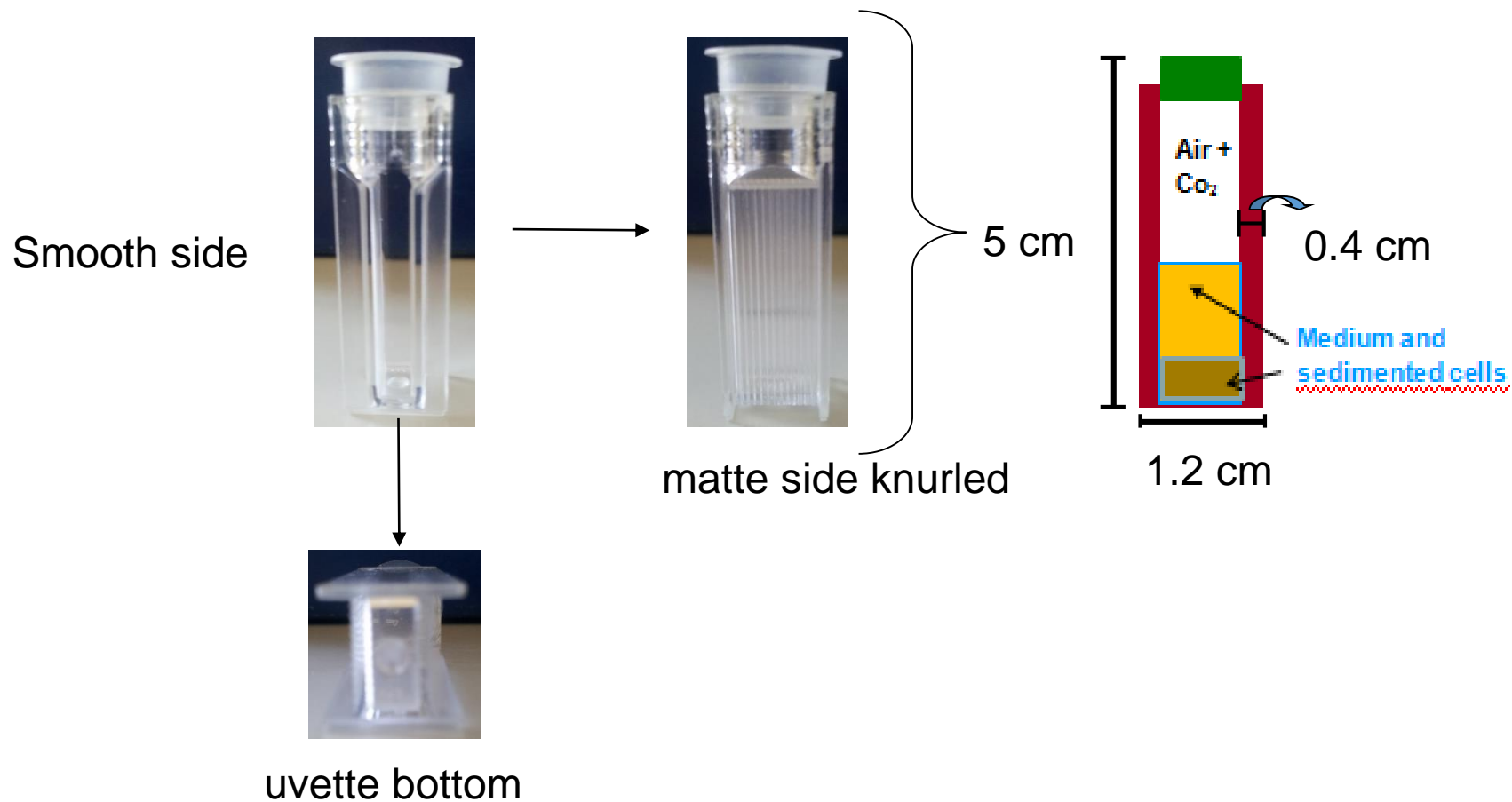


Figure S5. Uvettes used for irradiations at 10 MV TrueBeam™ linear accelerator located at the Regina Elena National Cancer Institute (Rome)