

# Supplementary data

## Microwave irradiation vs structural, physicochemical and biological features of porous environmentally active silver-silica nanocomposites

Aleksandra Strach <sup>1</sup>, Mateusz Dulski <sup>2,\*</sup>, Daniel Wasilkowski <sup>3</sup>, Oliwia Metryka <sup>1</sup>, Anna Nowak <sup>3</sup>, Krzysztof Matus <sup>4</sup>, Karolina Dudek <sup>5</sup>, Patrycja Rawicka <sup>6</sup>, Jerzy Kubacki <sup>6</sup>, Natalia Waloszczyk <sup>7</sup>, Agnieszka Mroziak <sup>3</sup> and Sylwia Golba <sup>2</sup>

<sup>1</sup> Doctoral School, University of Silesia, Bankowa 14, 40-032 Katowice, Poland; aleksandra.strach@us.edu.pl (A.S.); oliwia.metryka@us.edu.pl (O.M.)

<sup>2</sup> Institute of Materials Engineering, and Silesian Center for Education and Interdisciplinary Research, 75 Pulku Piechoty 1A, 41-500 Chorzow, Poland; sylwia.golba@us.edu.pl

<sup>3</sup> Institute of Biology, Biotechnology, and Environmental Protection, Faculty of Natural Sciences, University of Silesia, Jagiellońska 28, 40-032 Katowice, Poland; daniel.wasilkowski@us.edu.pl (D.W.); anna.m.nowak@us.edu.pl (A.N.); agnieszka.mroziak@us.edu.pl (A.M.)

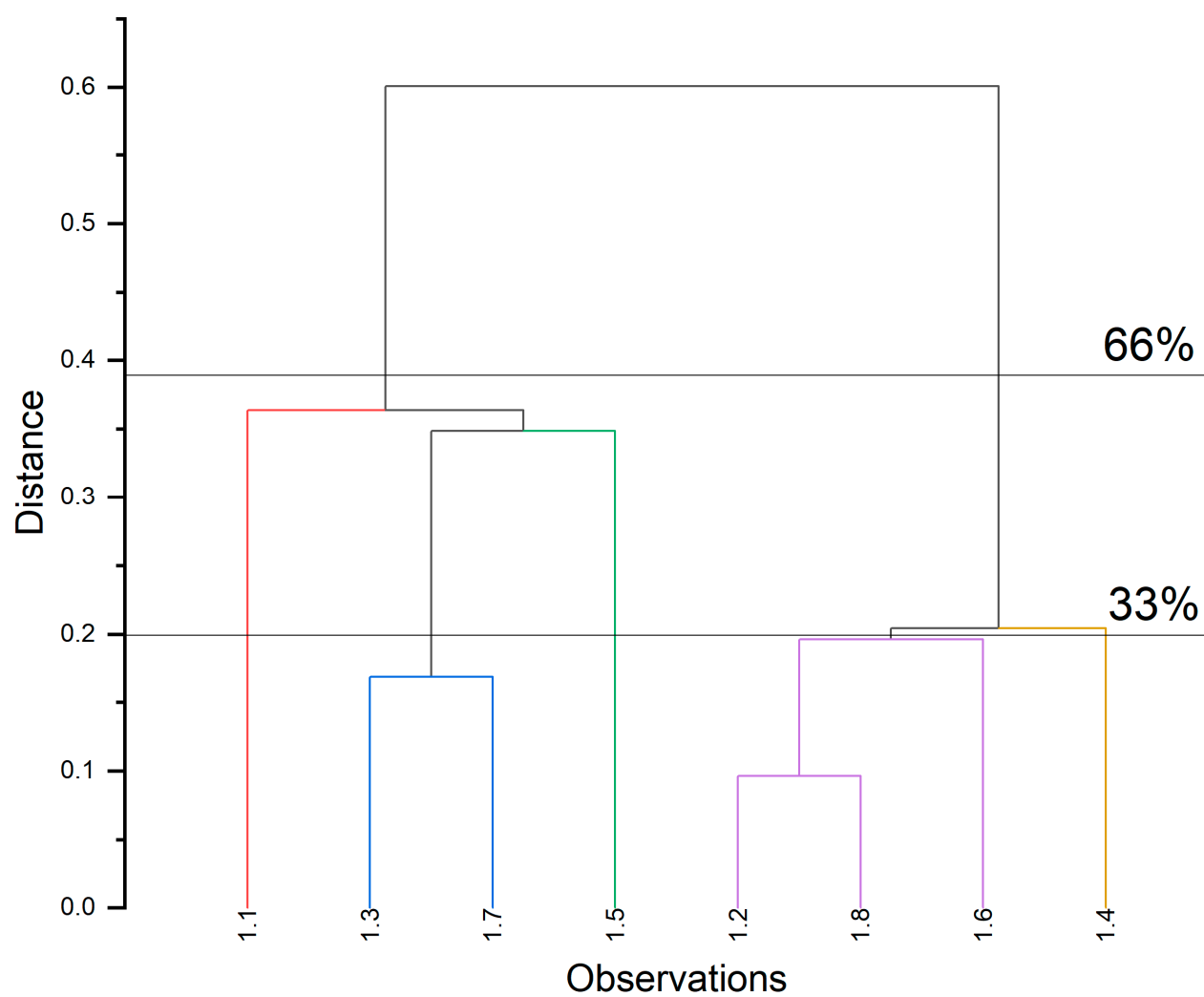
<sup>4</sup> Materials Research Laboratory, Silesian University of Technology, Konarskiego 18A, 44-100 Gliwice, Poland; krzysztof.matus@polsl.pl

<sup>5</sup> Łukasiewicz Research Network, Institute of Ceramics and Building Materials, Cementowa 8, 31-938 Cracow, Poland; karolina.dudek@icimb.lukasiewicz.gov.pl

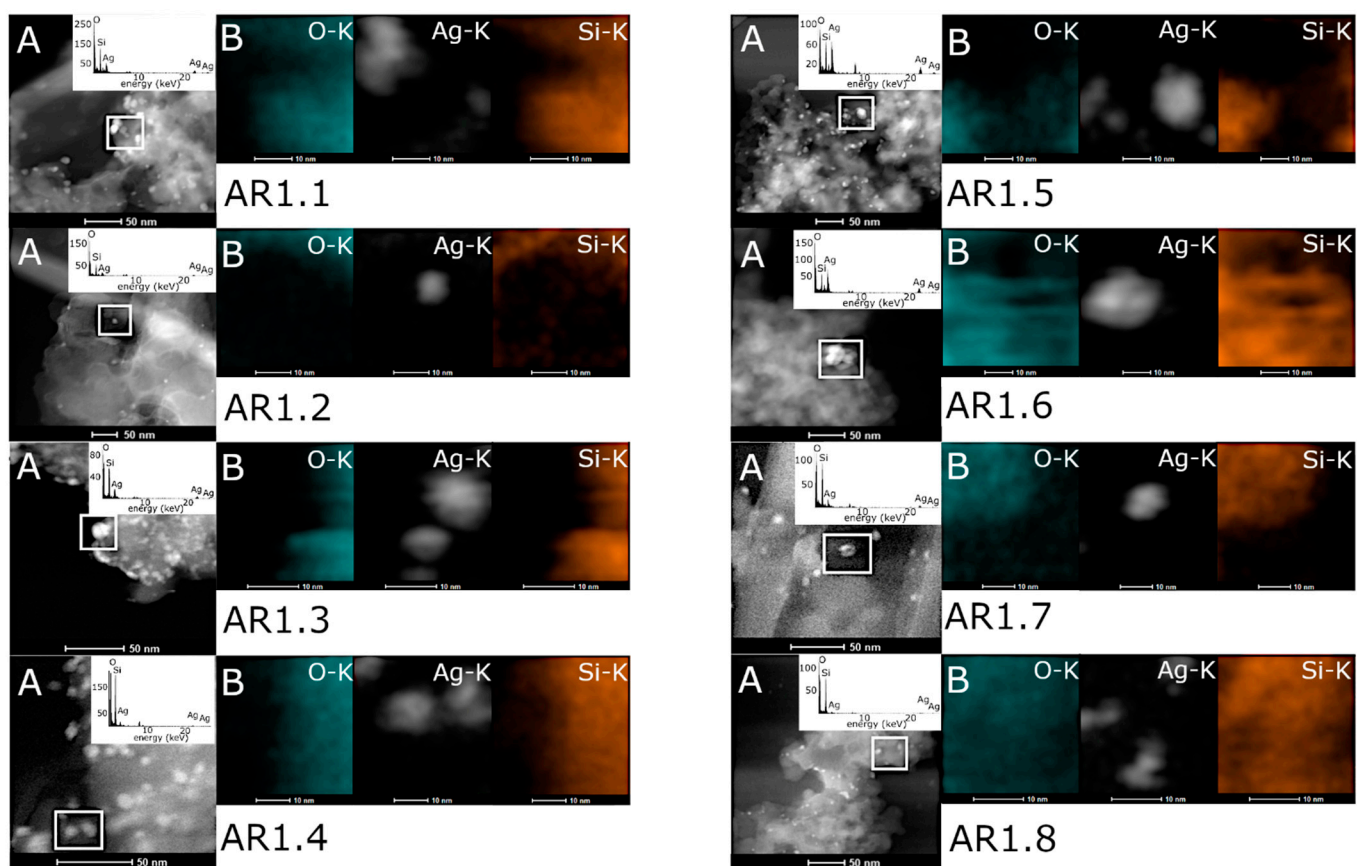
<sup>6</sup> A. Chełkowski Institute of Physics, University of Silesia, 75 Pulku Piechoty 1, 41-500 Chorzow, Poland; patrycja.rawicka@us.edu.pl (P.R.); jerzy.kubacki@us.edu.pl (J.K.)

<sup>7</sup> Faculty of Chemistry, Silesian University of Technology, 44-100 Gliwice, Poland; natalia.szulc@polsl.pl

\* Correspondence: mateusz.dulski@us.edu.pl



**Figure S1.** Hierarchical cluster analysis performed between  $SSA_{BET}$  and  $D_{pore}$  with Sneath criteria grouped samples Ag-S1 and Ag-S2 into individual clusters.



**Figure S2.** (A) HRTEM micro images with TEM-EDS spectrum in the inset. (B) HRTEM chemical mapping around the white-rectangular highlighted place performed for Ag-SiO<sub>2</sub> nanocomposites (left panels refer to S1 Silica, right panel to S2 Silica). .