

Supplementary information

Supplementary data: The ^1H , ^{13}C NMR and LC-MS spectra of compound **3** and ^1H NMR and LC-MS spectra of compound **2**.

Table of Contents

Copies of ^1H , ^{13}C NMR and LC-MS spectra of compound 3	S2-3
Copies of ^1H NMR and LC-MS spectra of compound 2	S4-5

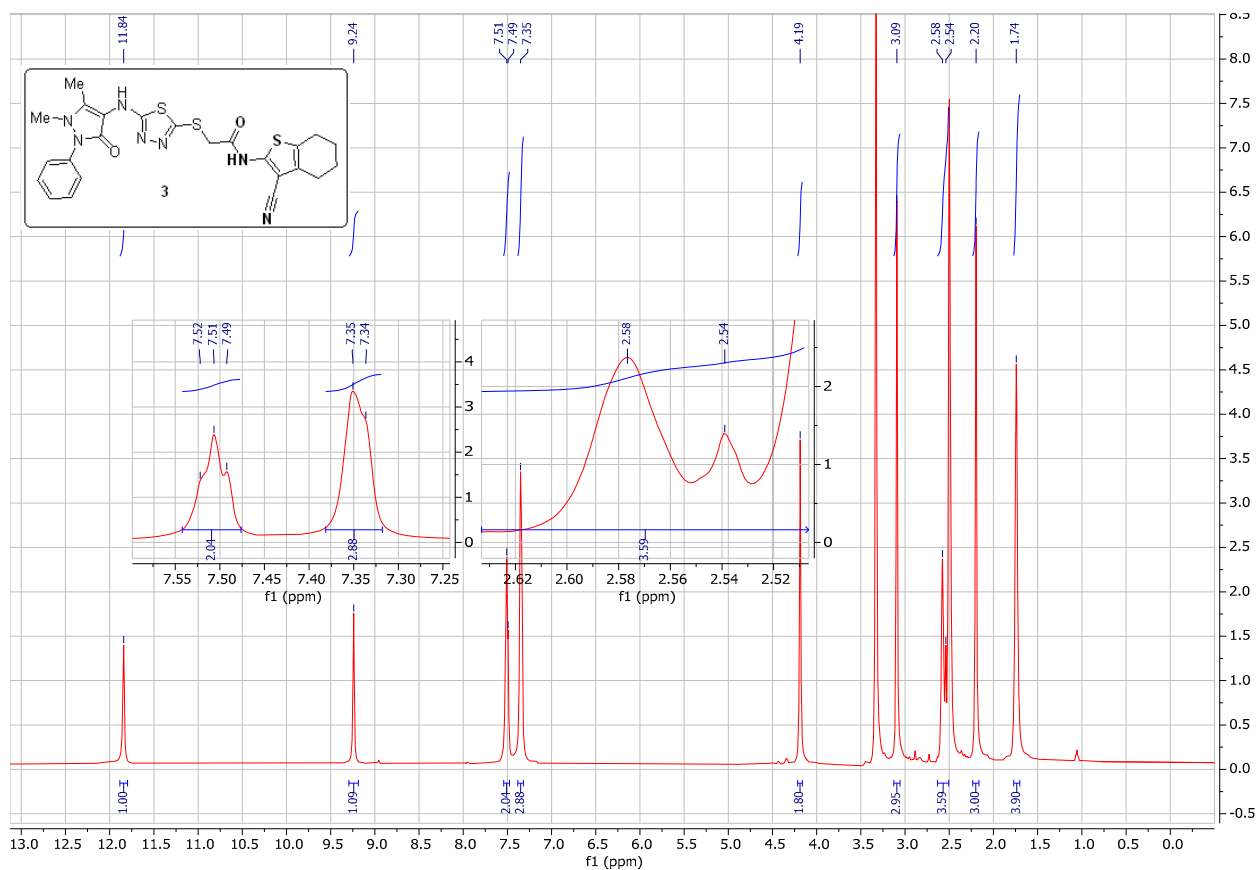


Figure S1. ¹H NMR spectrum of compound **3**

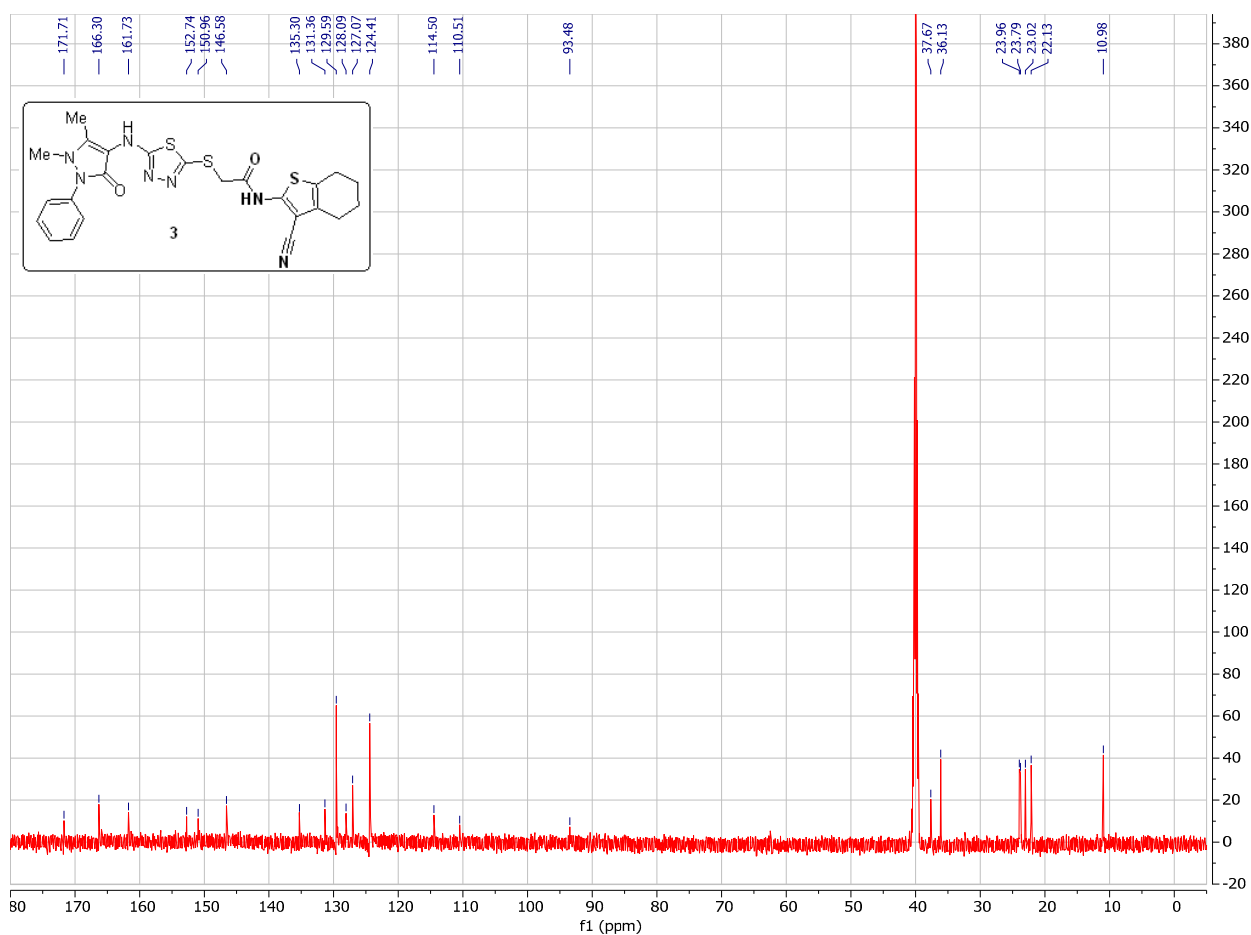


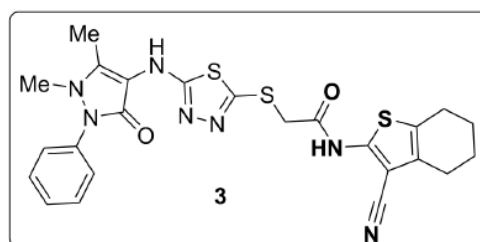
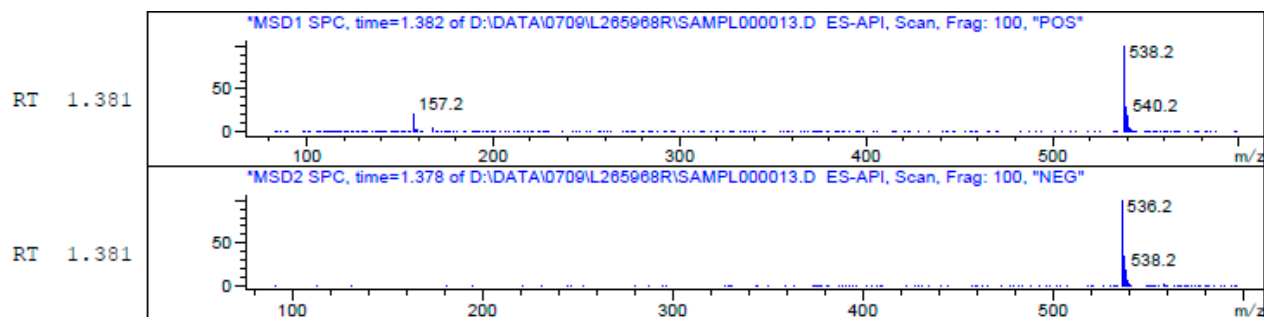
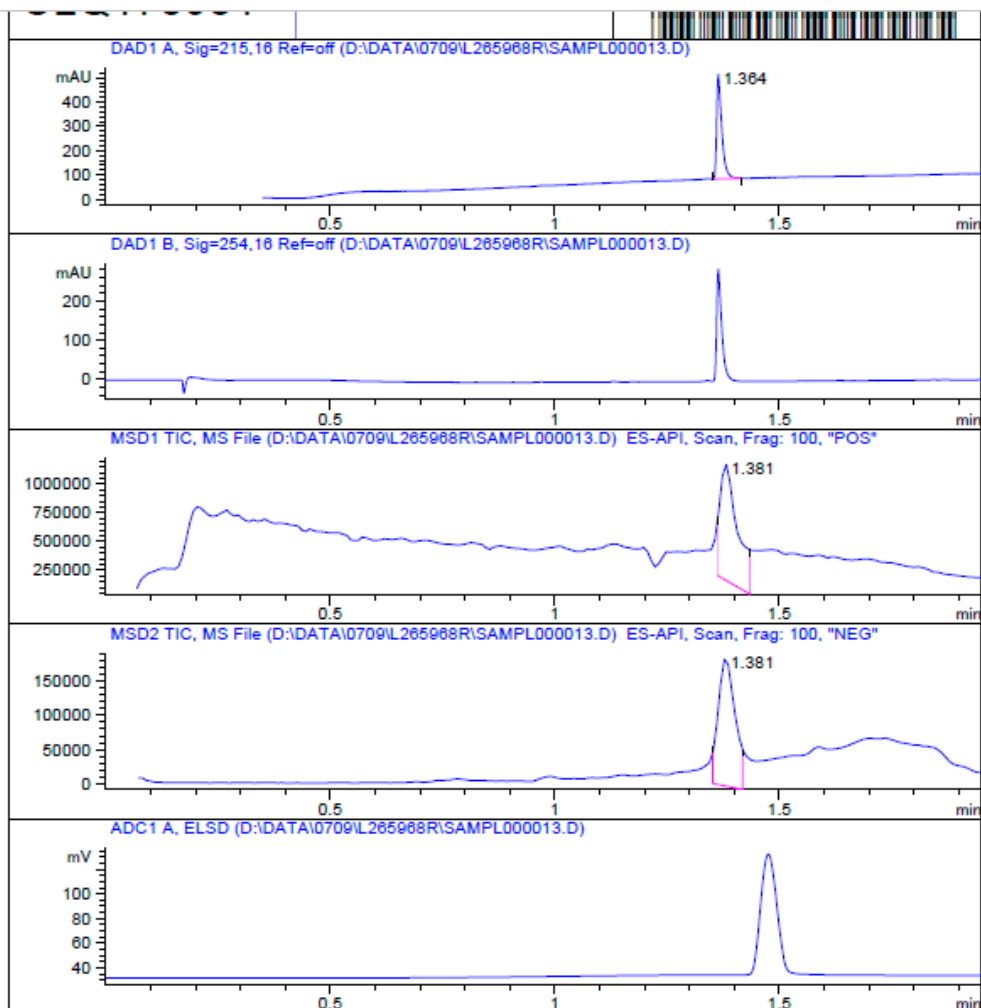
Figure S2. ¹³C NMR spectrum of compound **3**

MaxPeak: 100.00%
Ret_Time: 1.364 min

Mol Wt
Exact Mass

#	Time	Area%
1	1.364	100.00

0



Molecular Weight: 537,68

Figure S3. LC-MS spectrum of compound 3

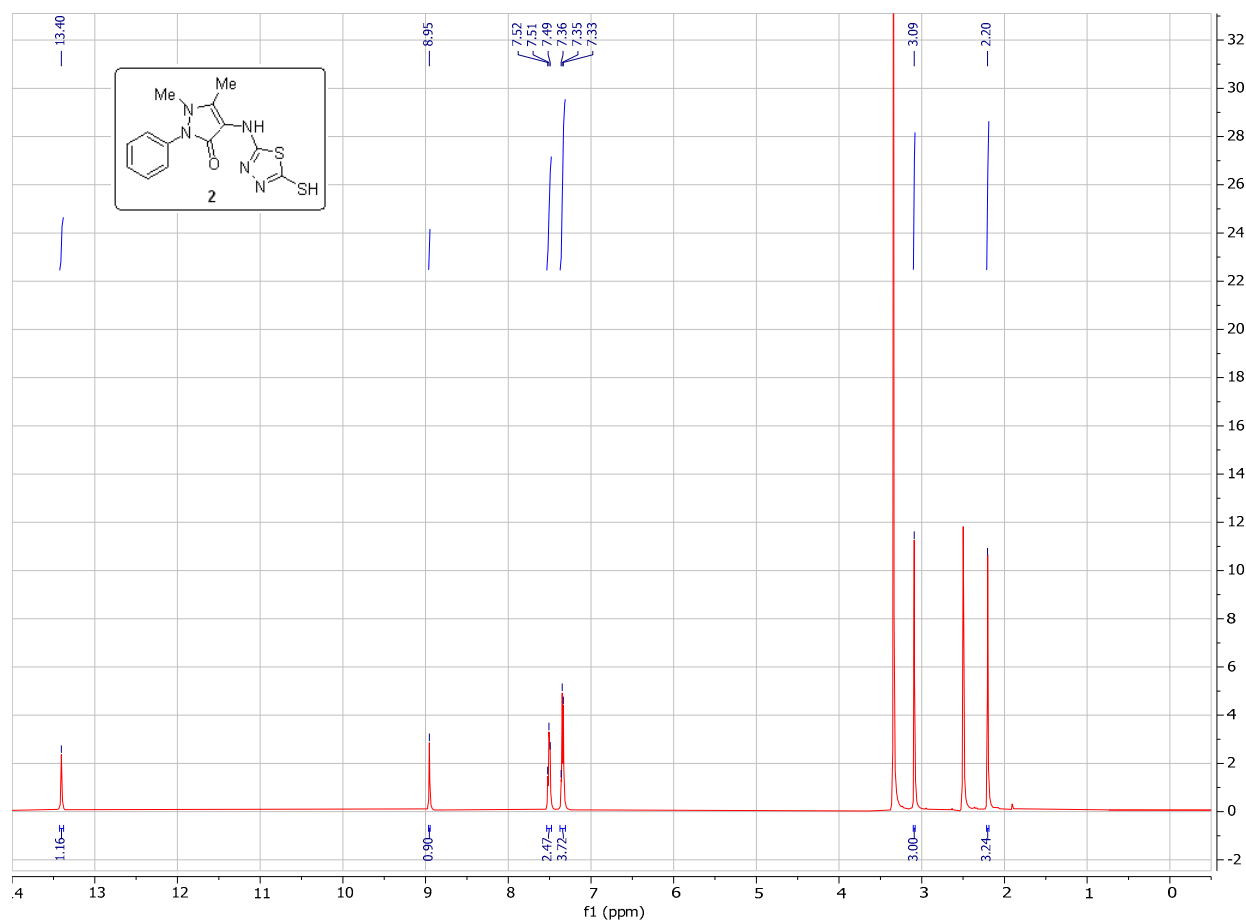


Figure S4. ^1H NMR spectrum of compound **2**

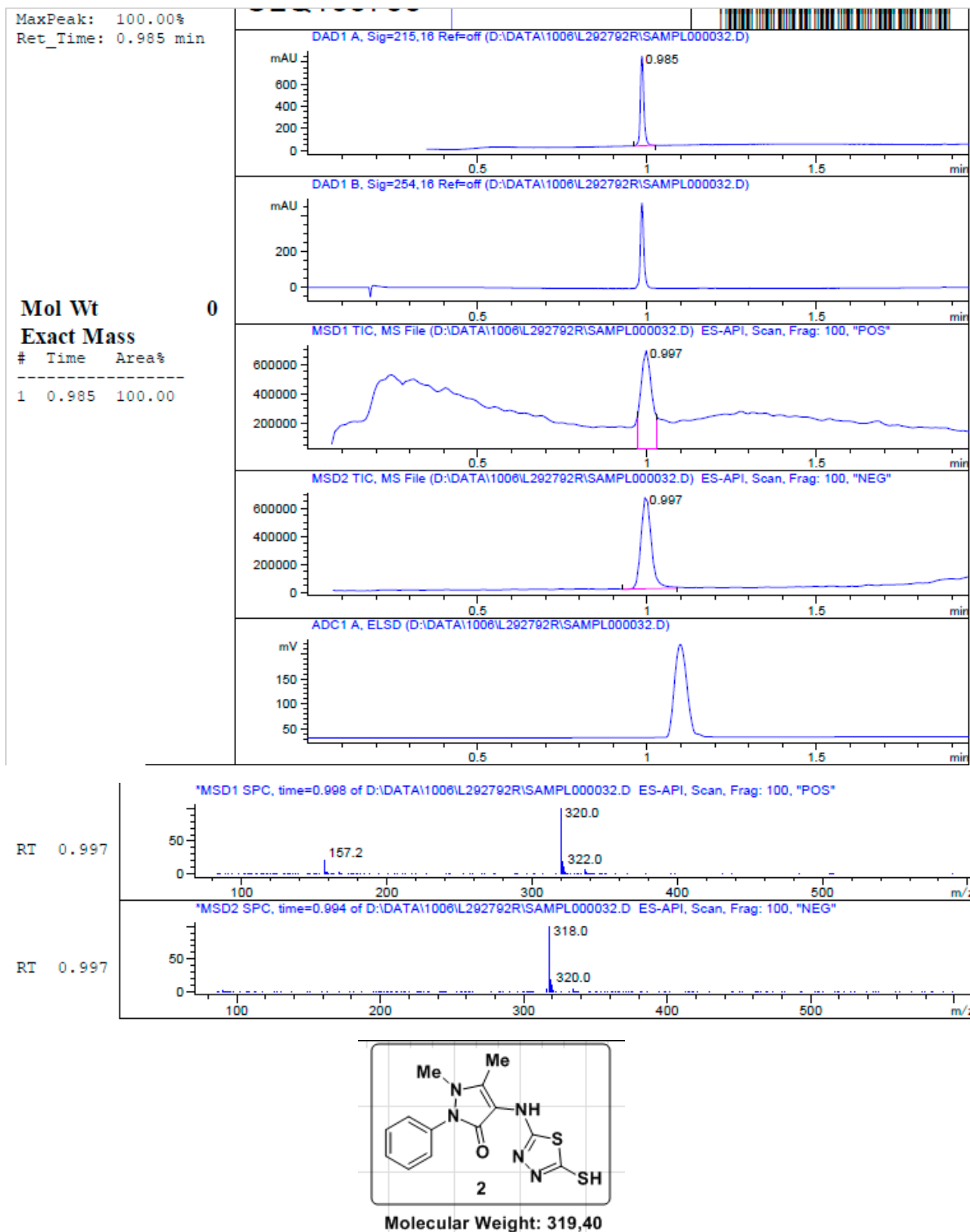


Figure S5. LC-MS spectrum of compound 2