

Supplementary Materials

(*N,N'*-Di-*tert*-butyl-*S*-phenylsulfonimidamido- $\kappa N, \kappa N'$)-chlorogermanium- κGe -chloro(η^2, η^2 -cycloocta-1,5-diene)rhodium

Narimo Hosoda, Akihiko Ishii, and Norio Nakata *

Department of Chemistry, Graduate School of Science and Engineering,
Saitama University, 255 Shimo-okubo, Sakura-ku, Saitama 338-8570, Japan

Table of Contents

Figure S1. ^1H NMR spectrum of complex 2 .	S2
Figure S2. $^{13}\text{C}\{^1\text{H}\}$ NMR spectrum of complex 2 .	S2
Figure S3. $^{29}\text{Si}\{^1\text{H}\}$ NMR spectrum of complex 2 .	S3
Figure S4. $^{31}\text{P}\{^1\text{H}\}$ NMR spectrum of complex 2 .	S3
Figure S5. IR spectrum of complex 3 .	S4

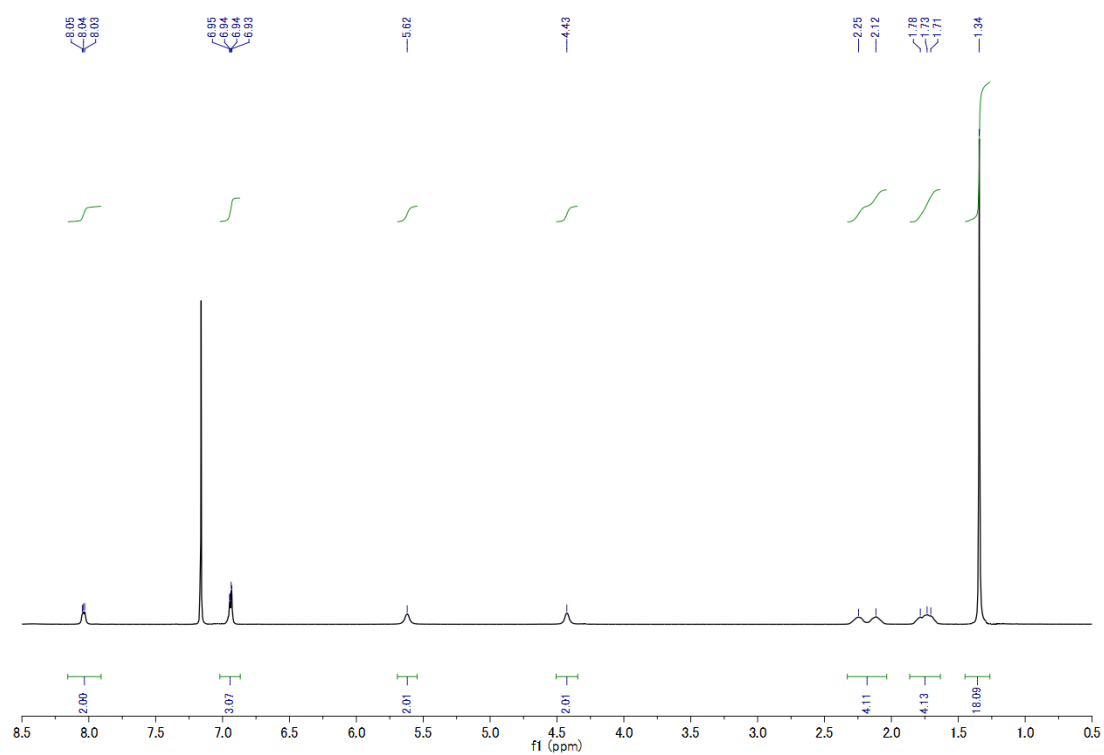


Figure S1. ¹H NMR spectrum of complex 2.

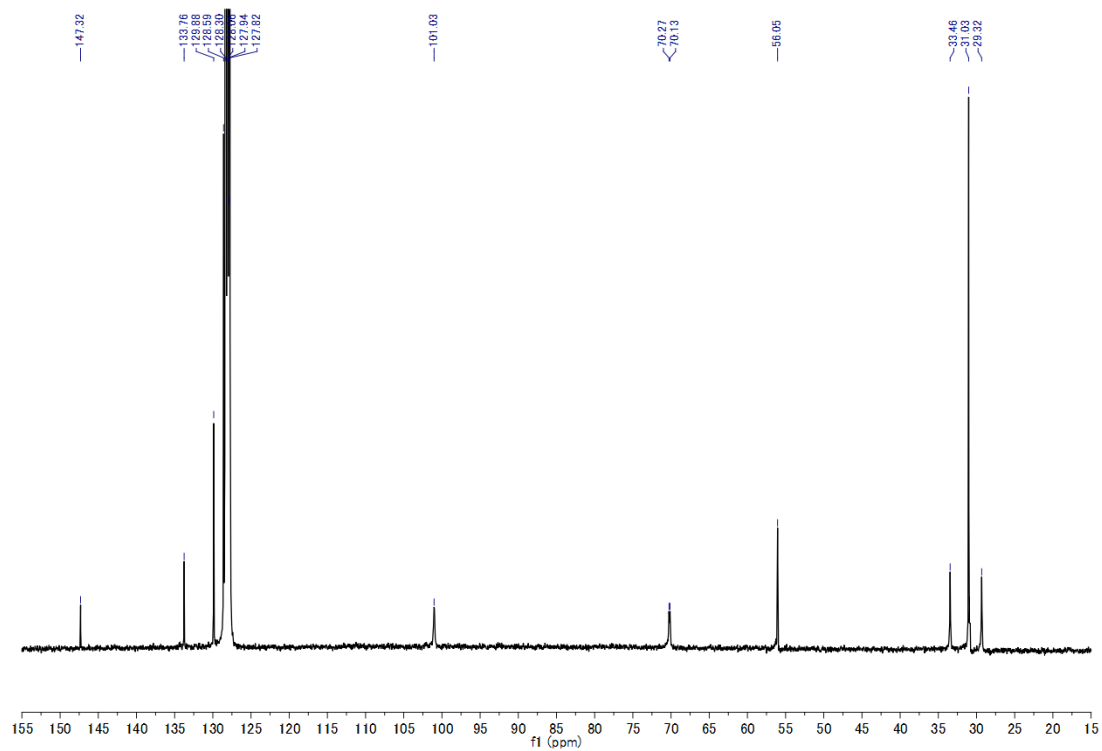


Figure S2. ¹³C {¹H} NMR spectrum of complex 2.

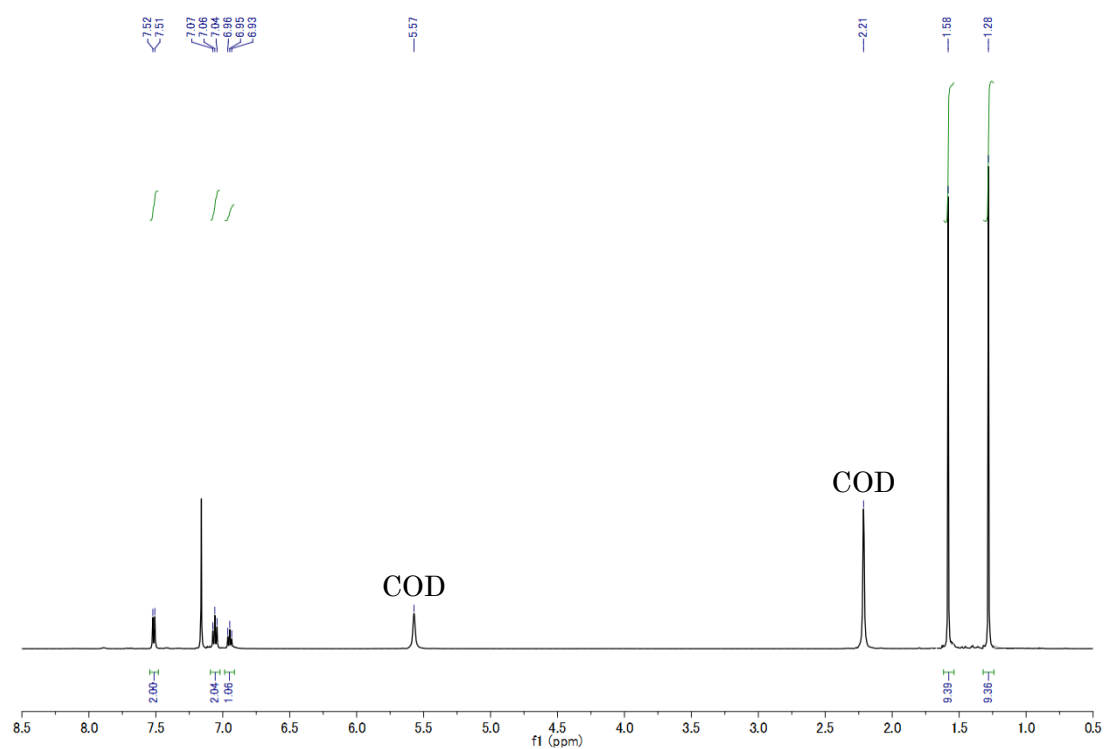


Figure S3. ¹H NMR spectrum of complex 3.

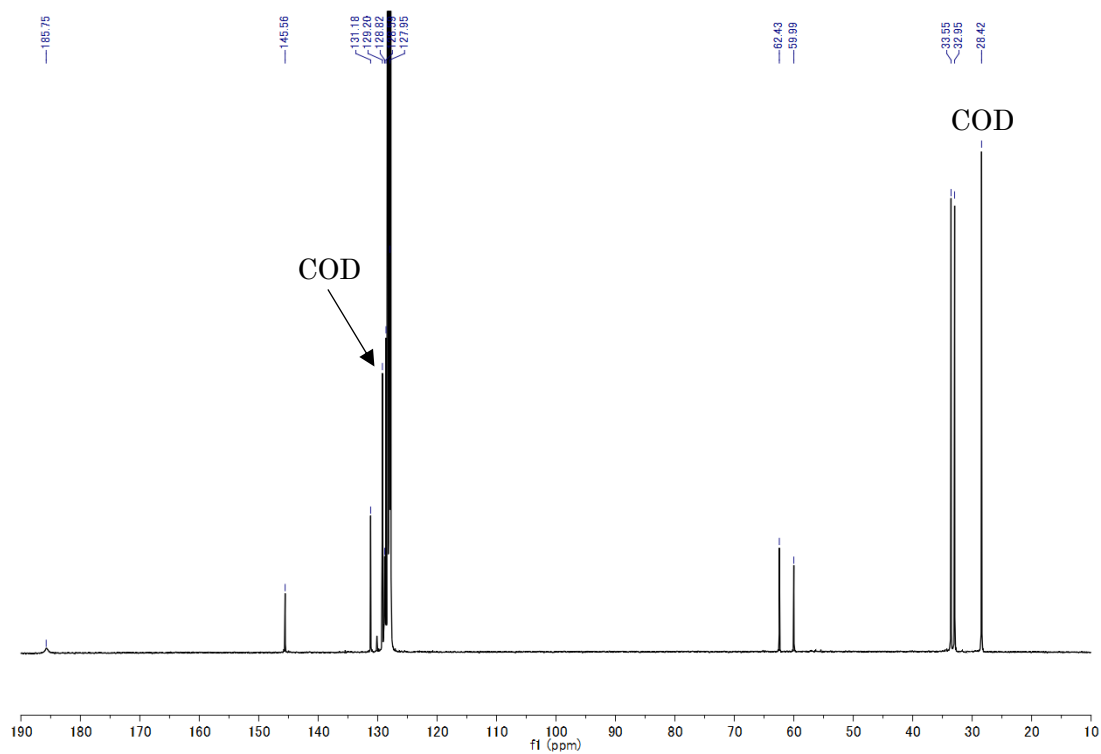


Figure S4. ¹³C{¹H} NMR spectrum of complex 2.

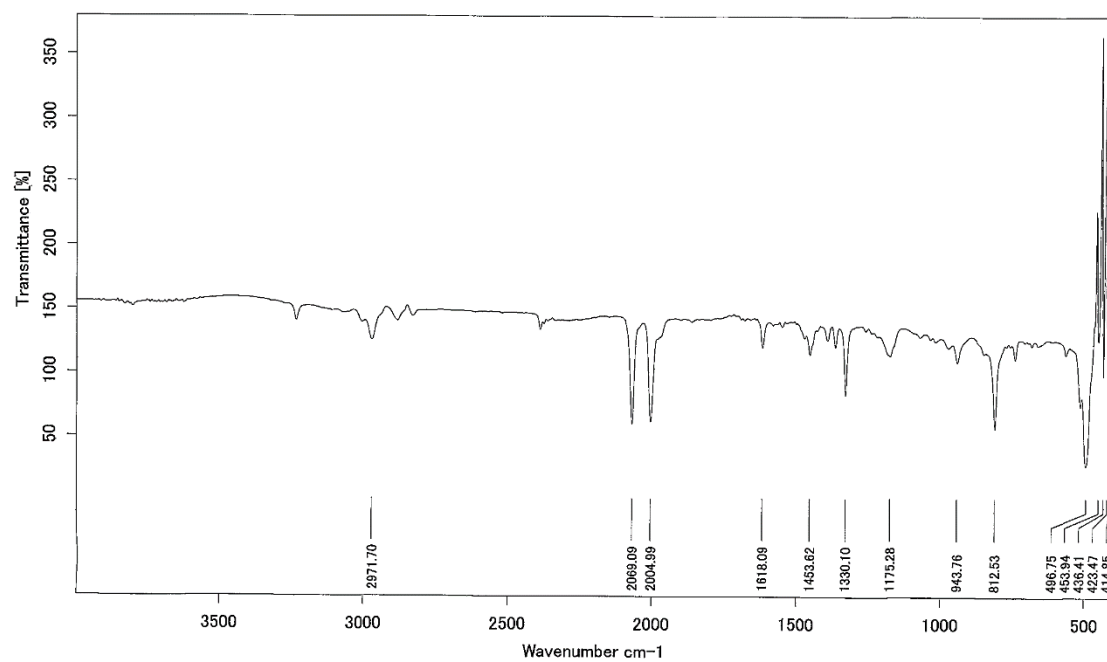


Figure S5. IR spectrum (KBr) of complex **3**.