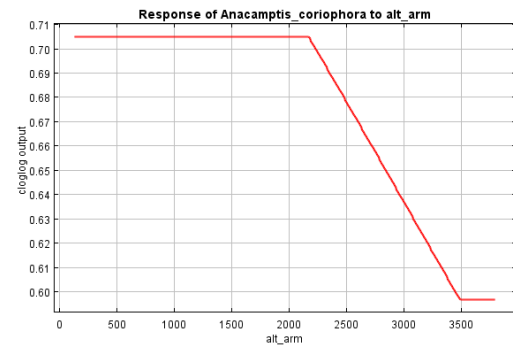
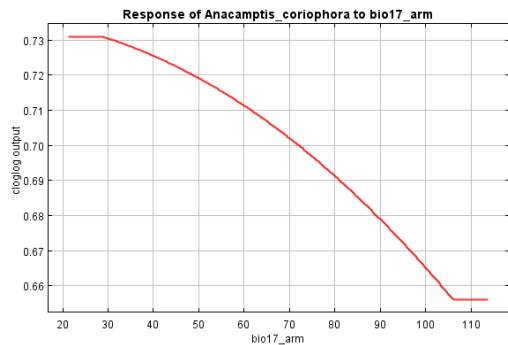
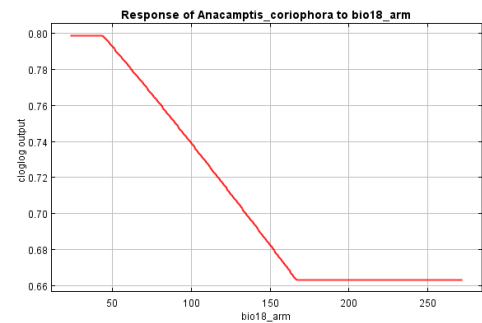
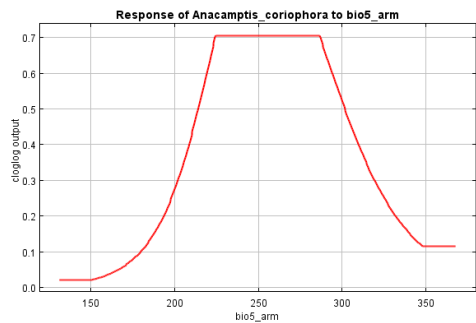
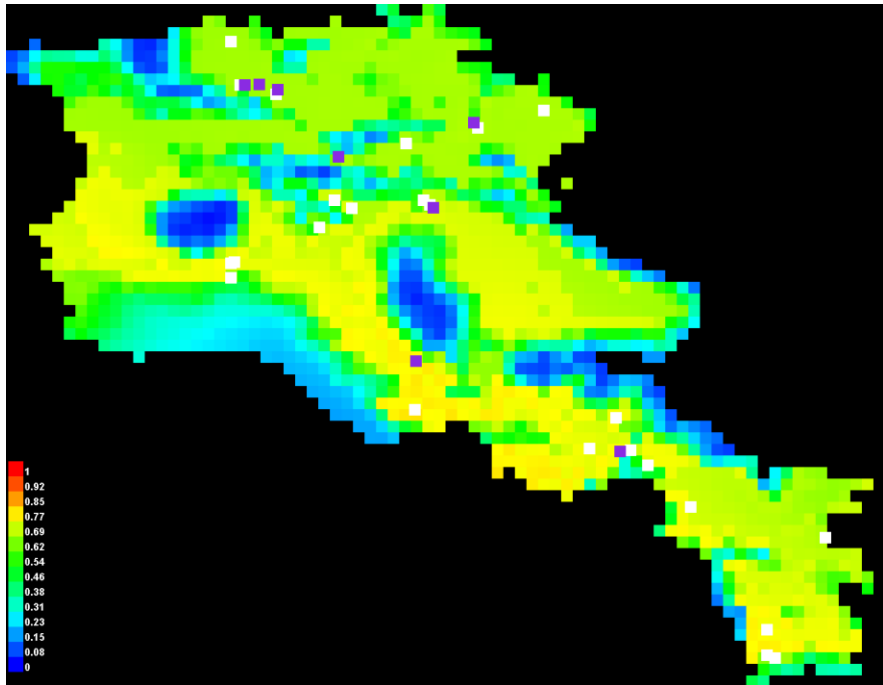
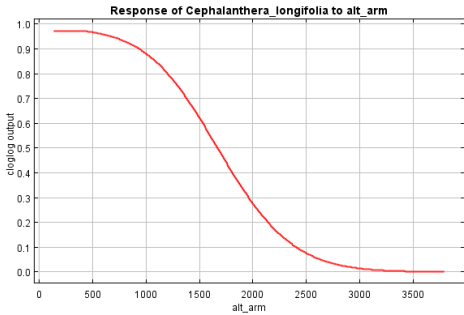
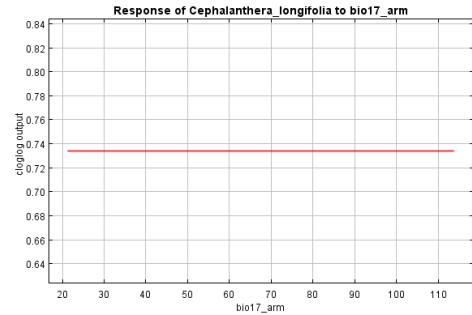
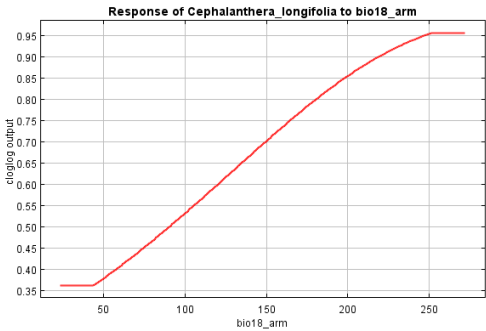
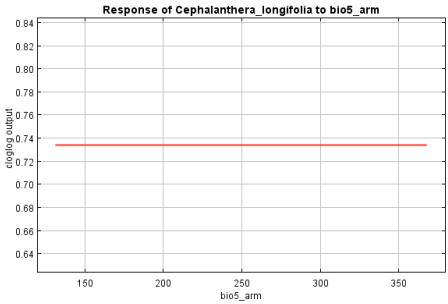
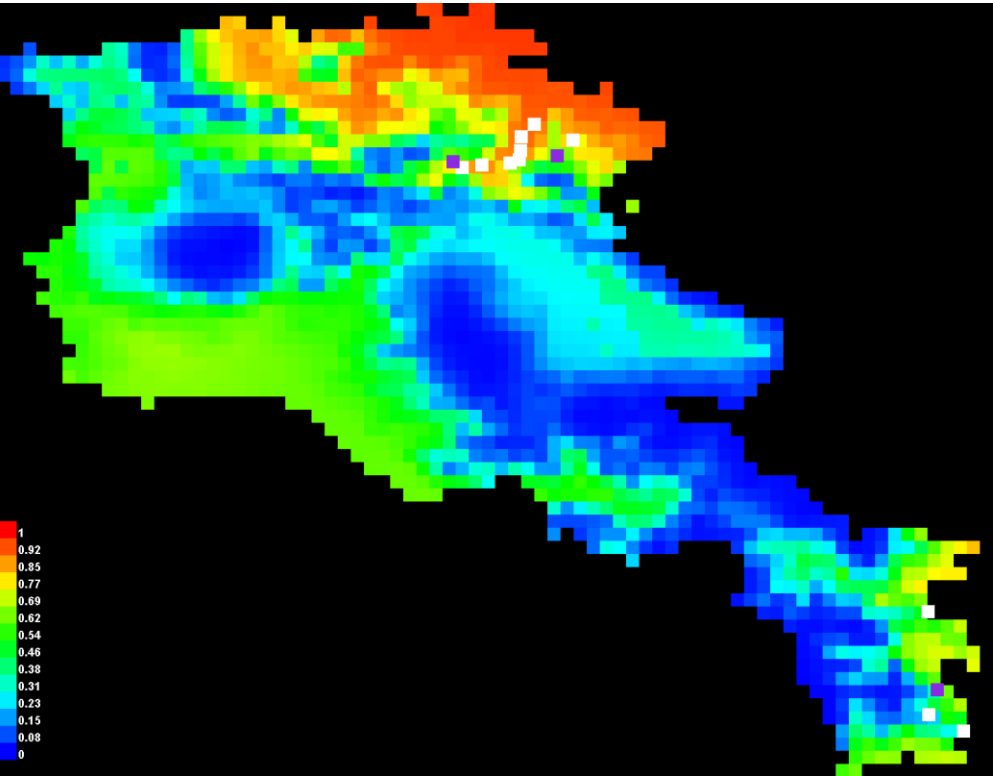


Figure S3 Predicted species distribution of orchids found in Armenia using the MaxEnt model. Warmer colours show areas with better predicted conditions. White dots are presence locations used for training, while violet dots are points used for testing. Response curves are shown for each species. Bio5 = Max temperature of warmest month; Bio17 = Precipitation of driest quarter; Bio18 = Precipitation of warmest quarter and Alt = altitude

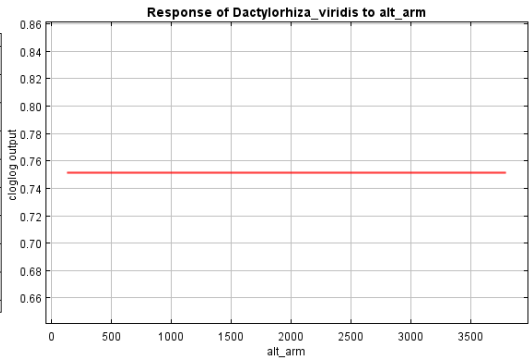
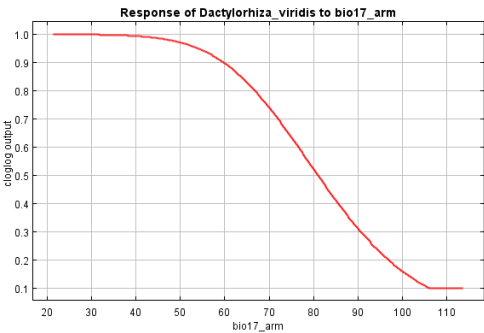
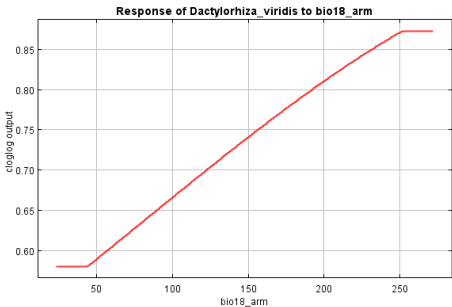
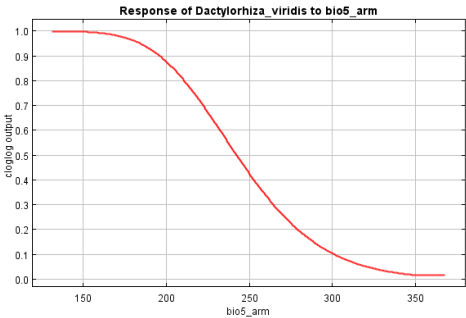
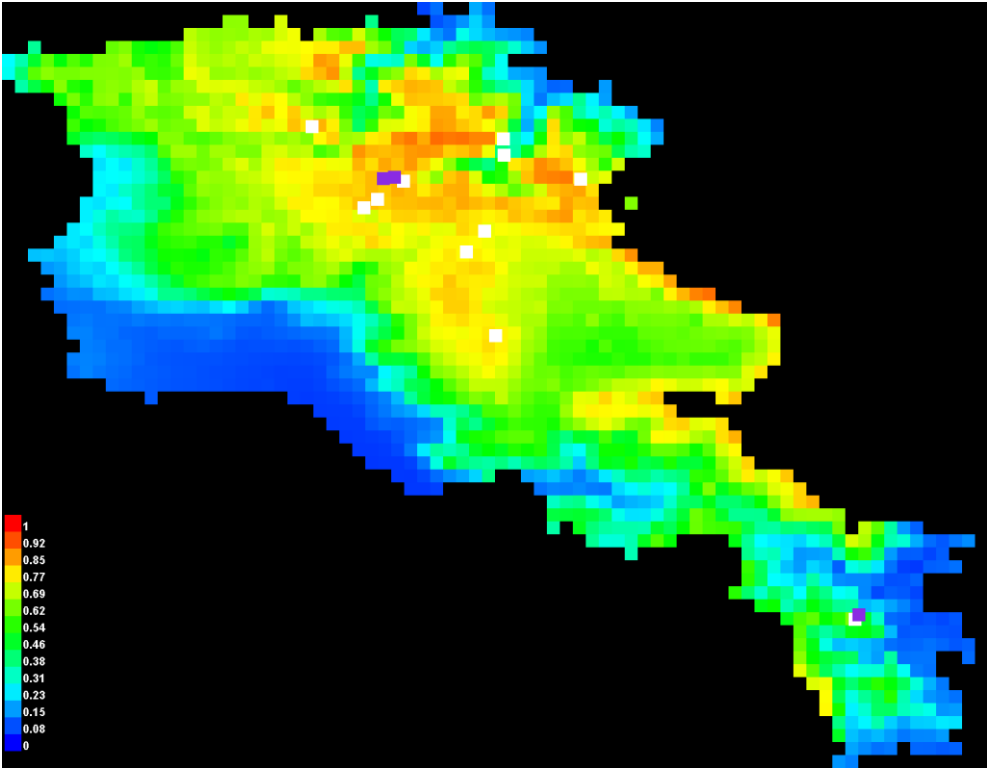
Anacamptis coriophora



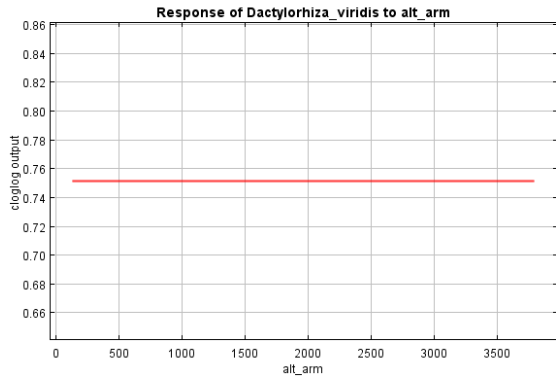
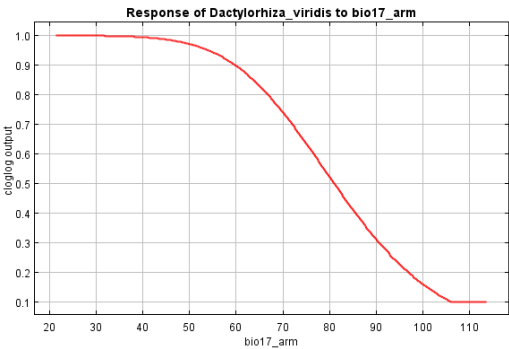
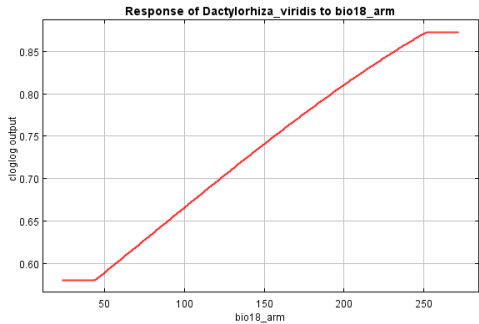
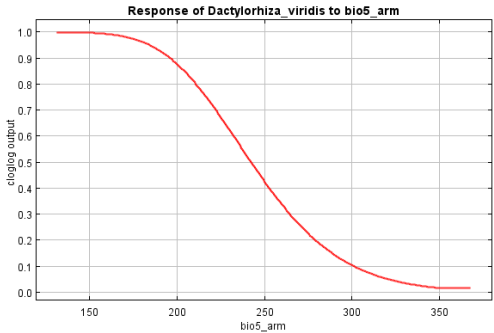
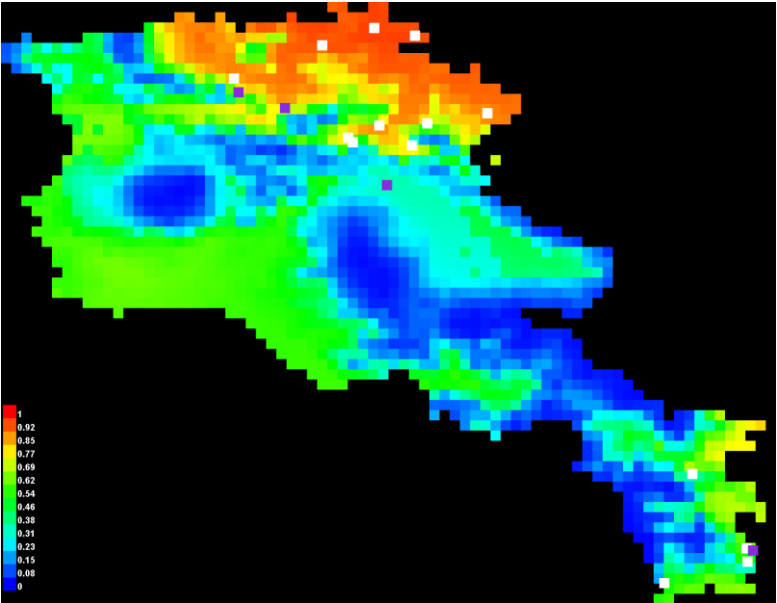
Cephalanthera longifolia



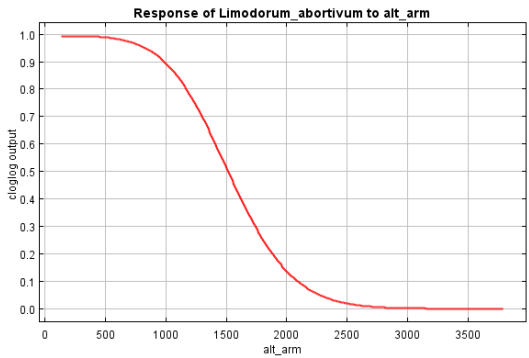
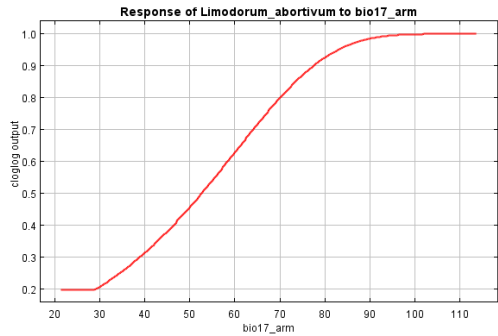
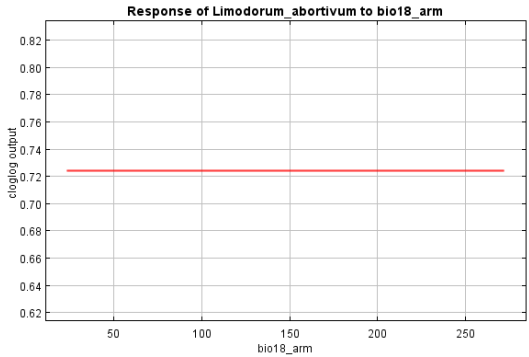
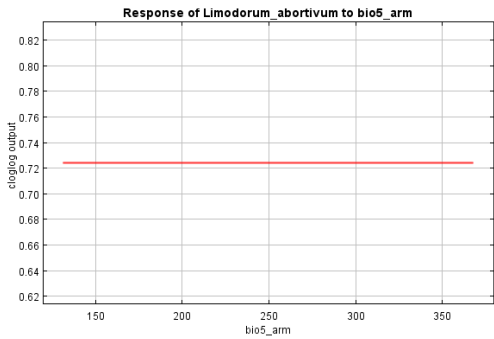
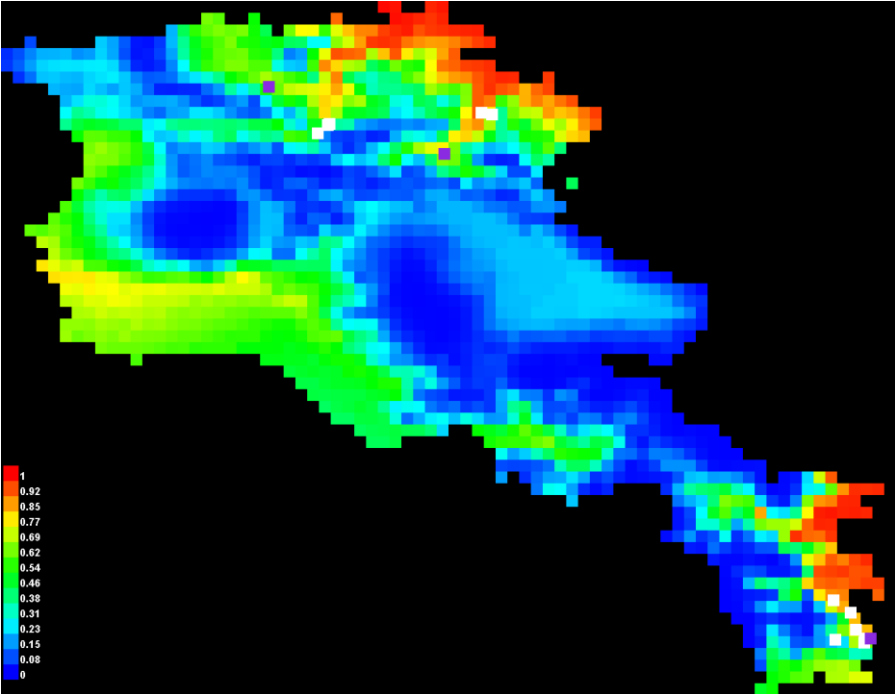
Dactylorhiza viridis



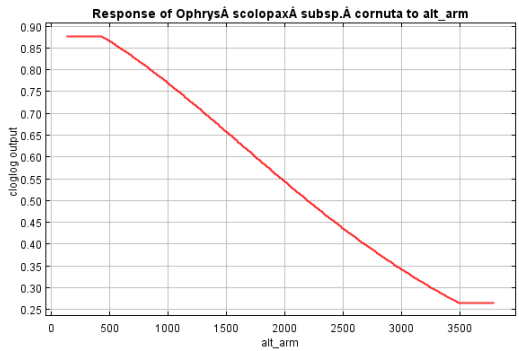
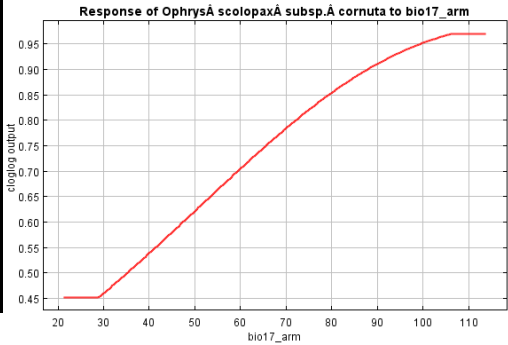
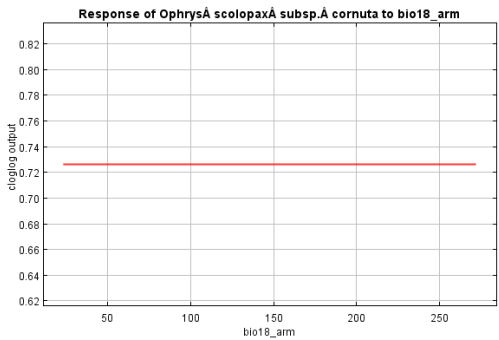
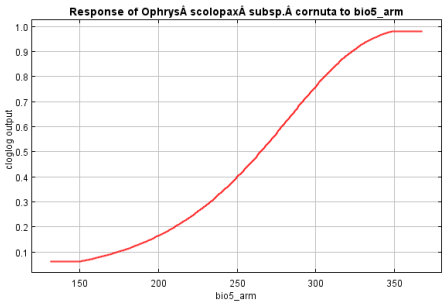
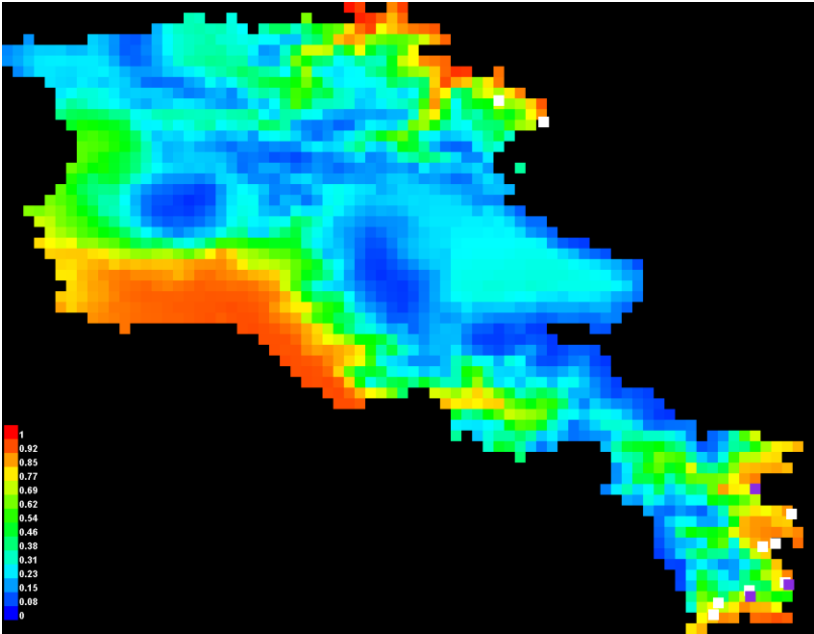
Epipactis helleborine



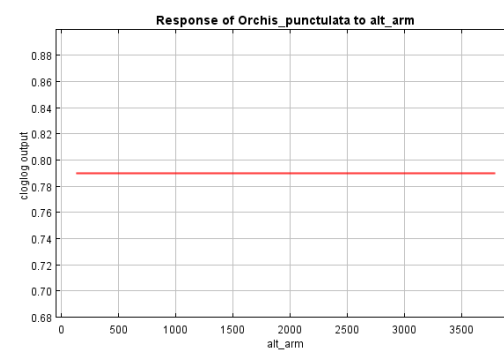
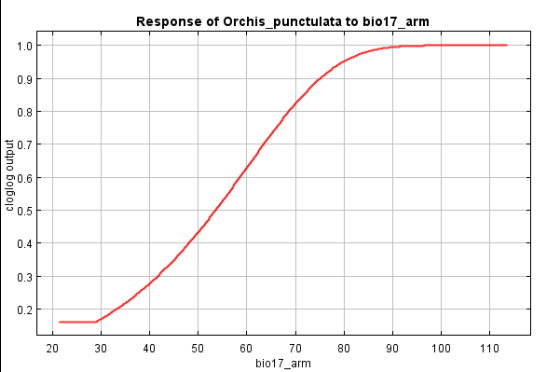
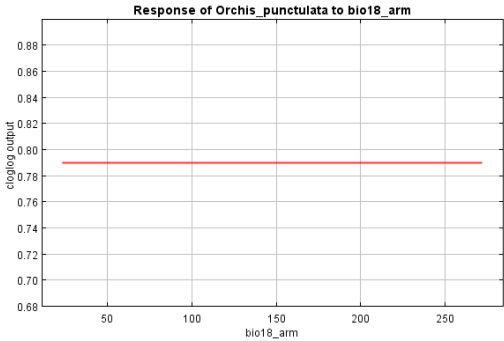
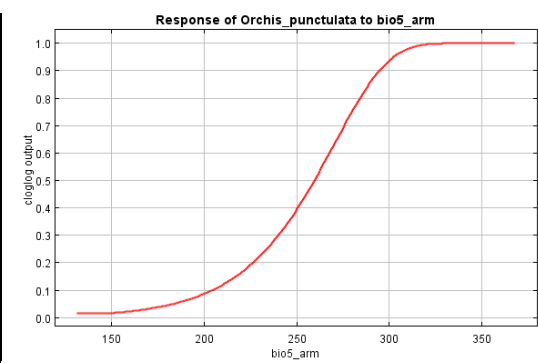
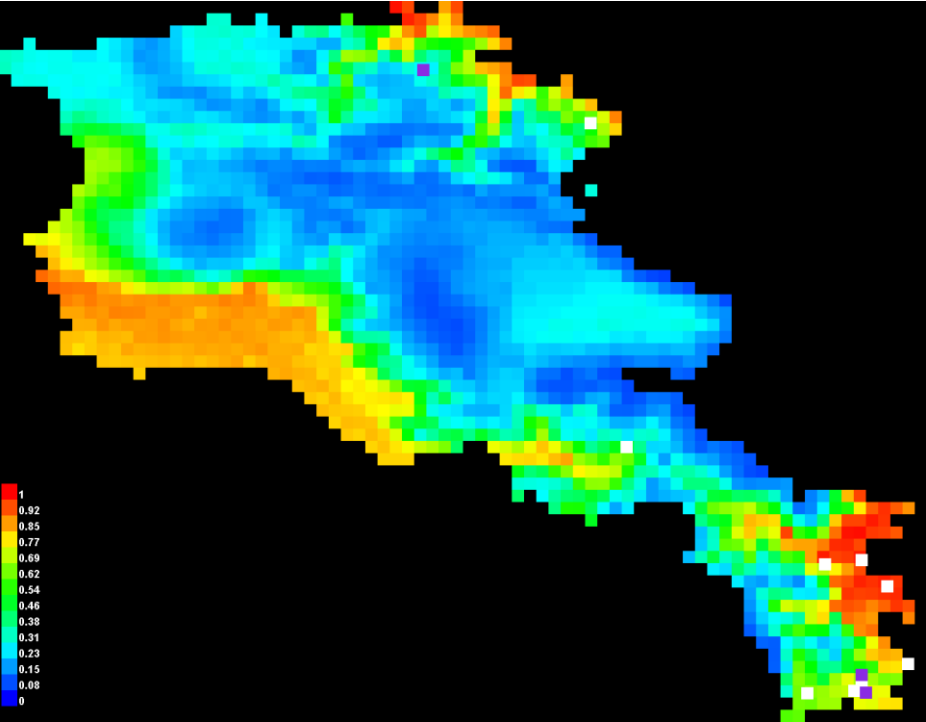
Limodorum abortivum



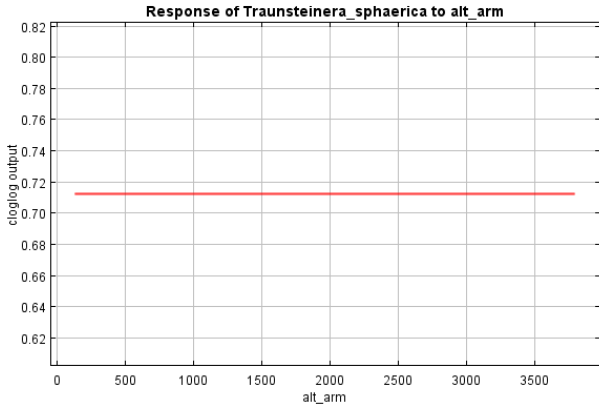
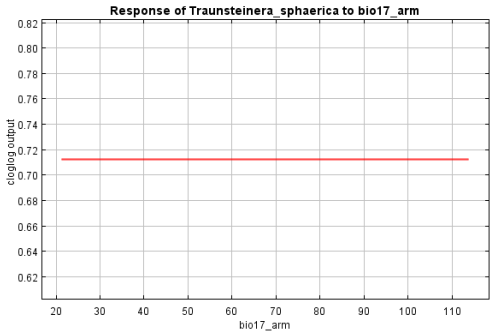
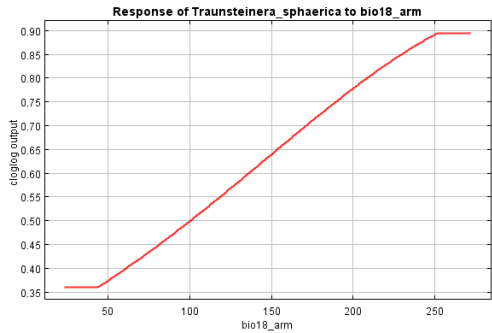
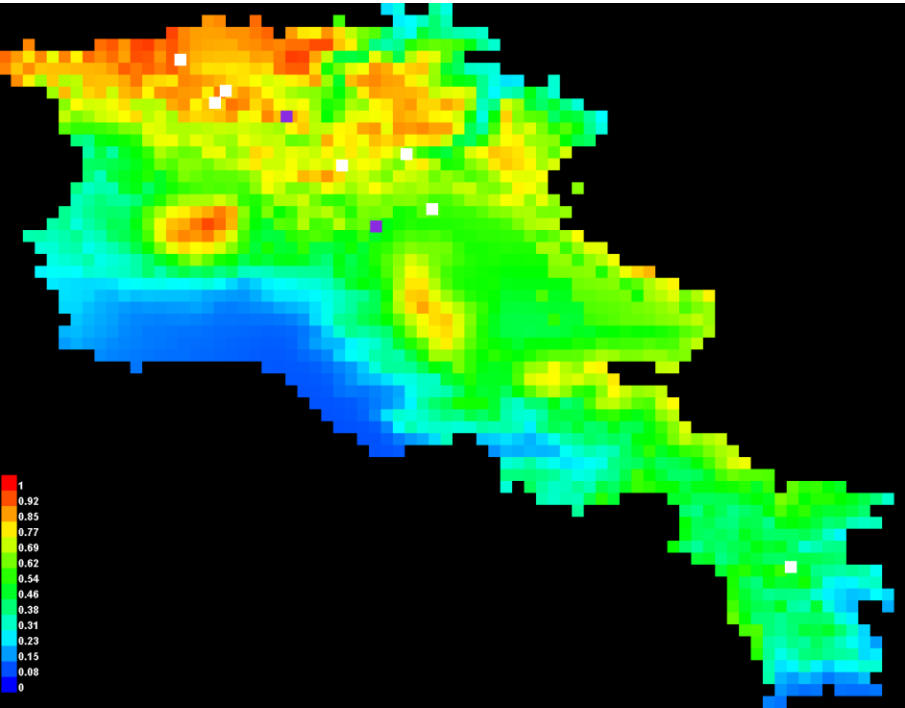
Ophrys scolopax subsp. cornuta



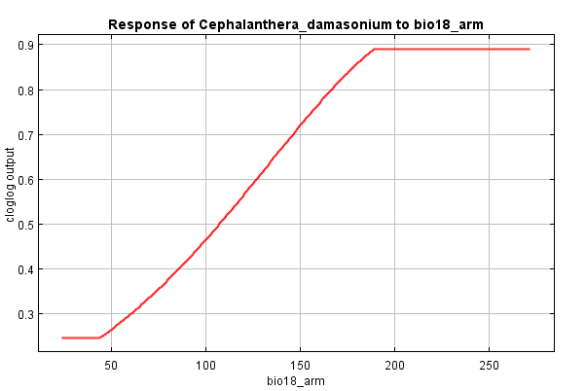
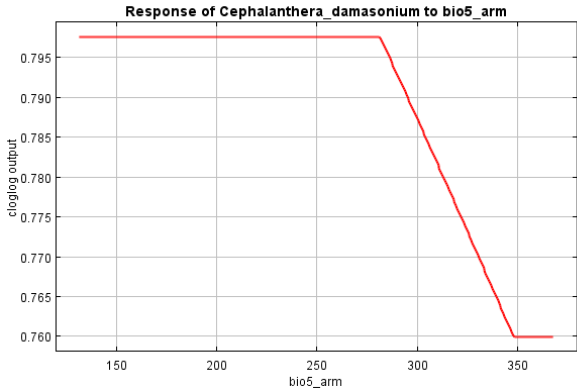
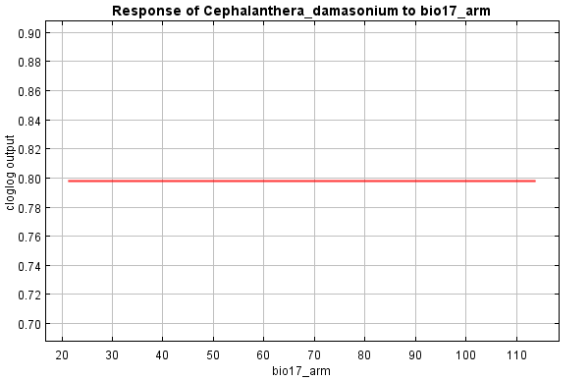
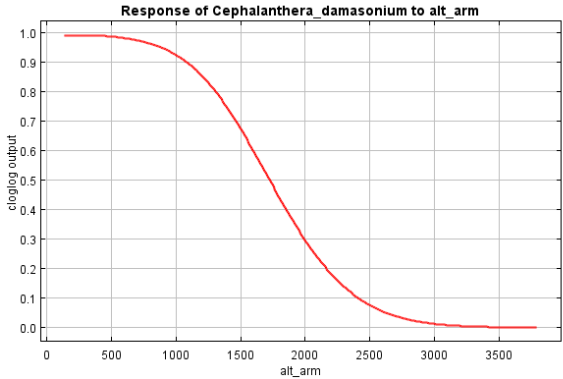
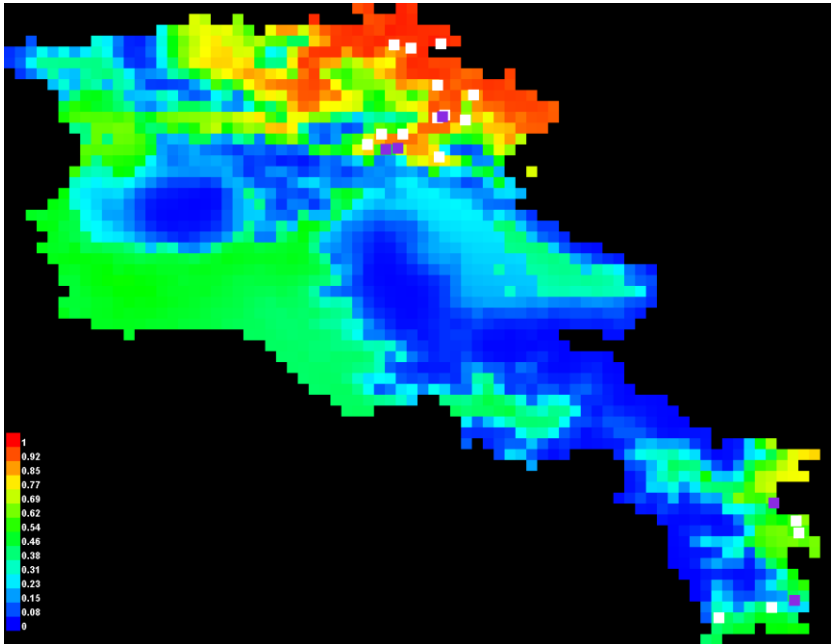
Orchis punctulata



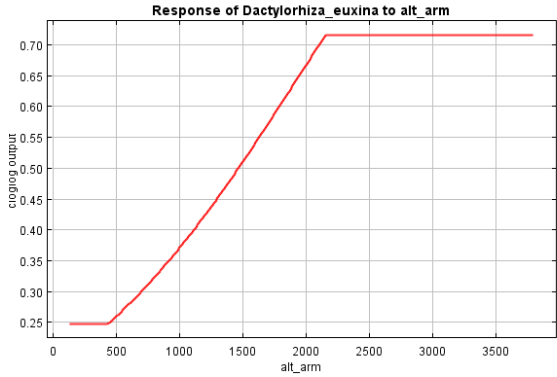
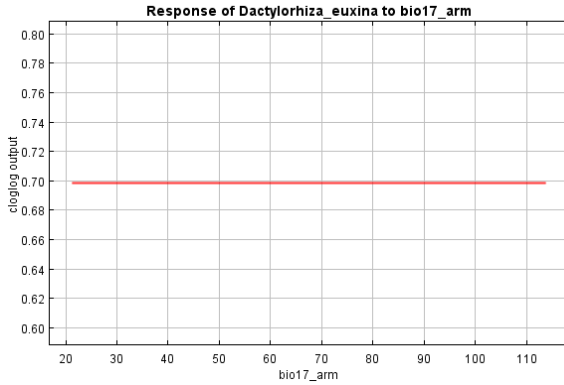
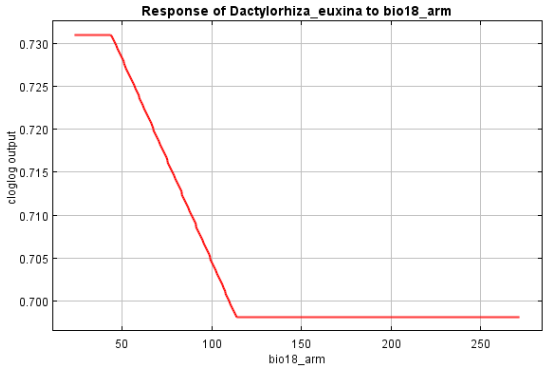
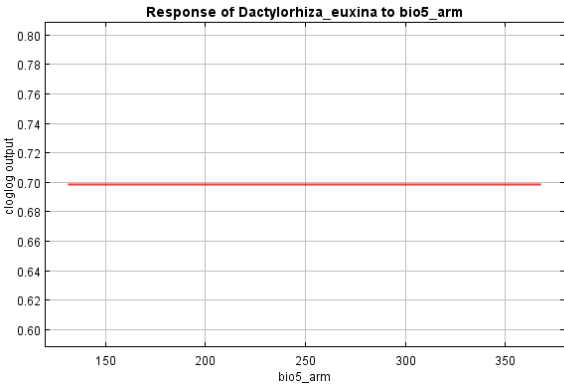
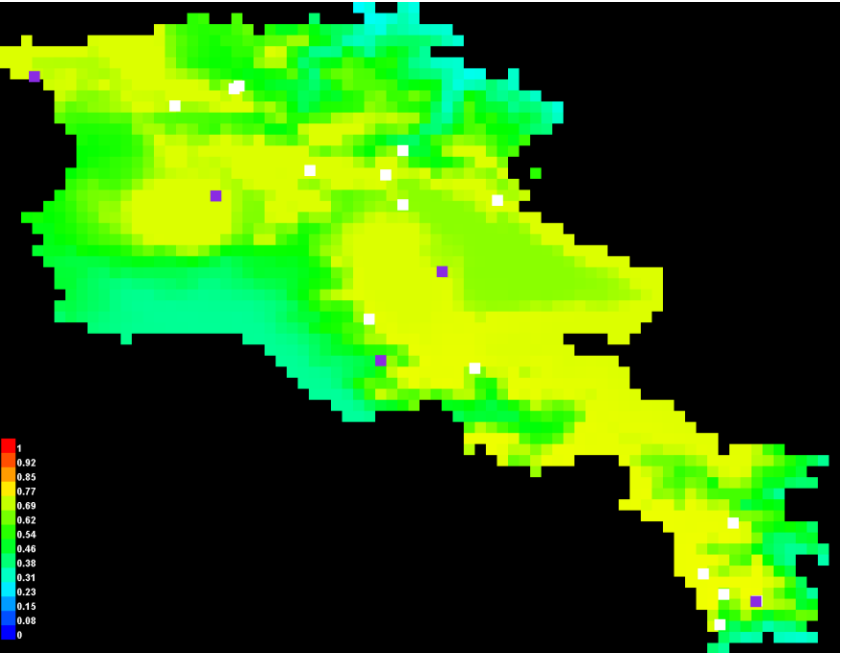
Traunsteinera sphaerica



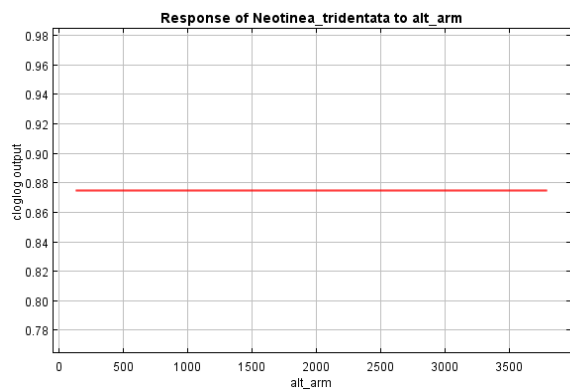
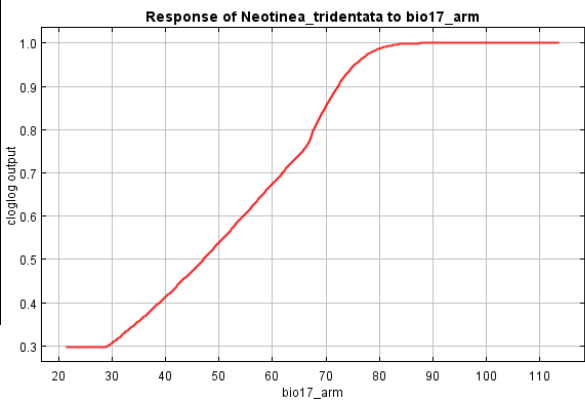
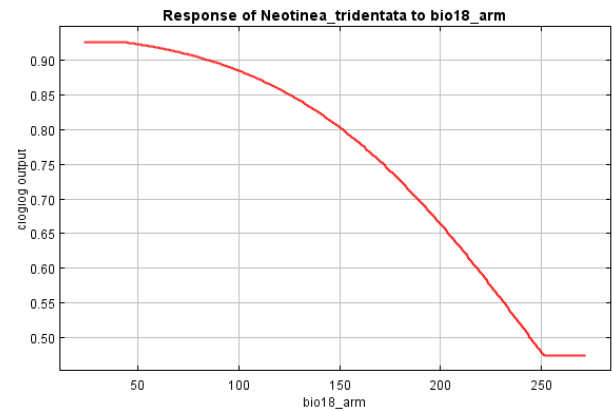
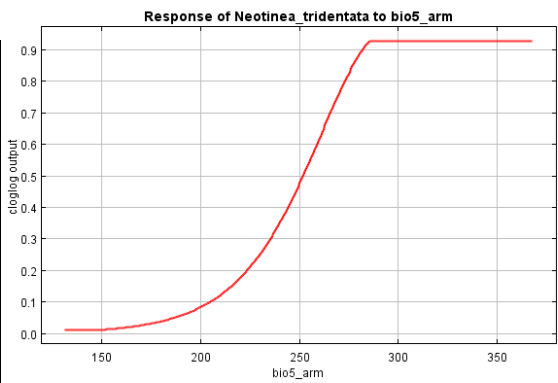
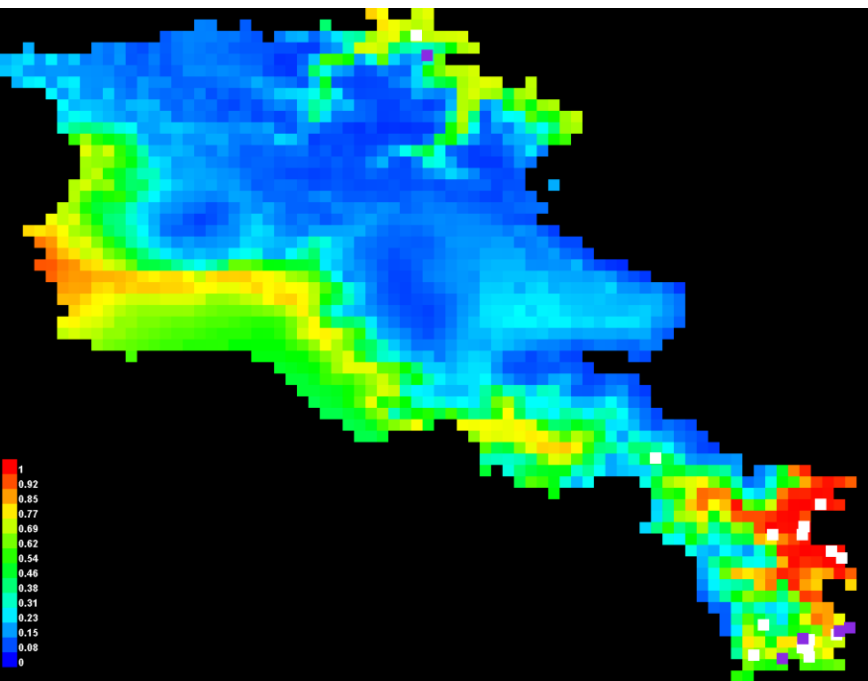
Cephalanthera damasonium



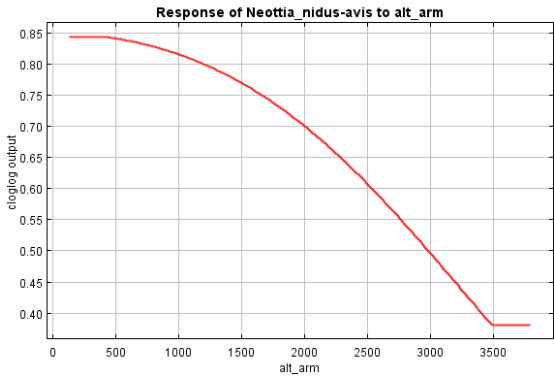
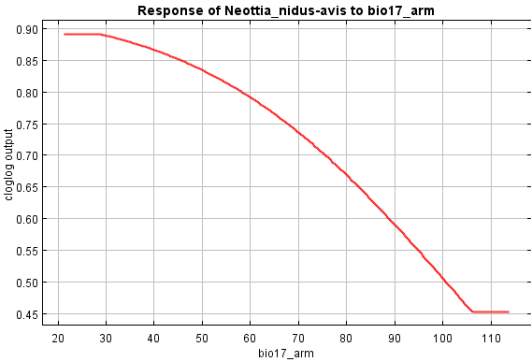
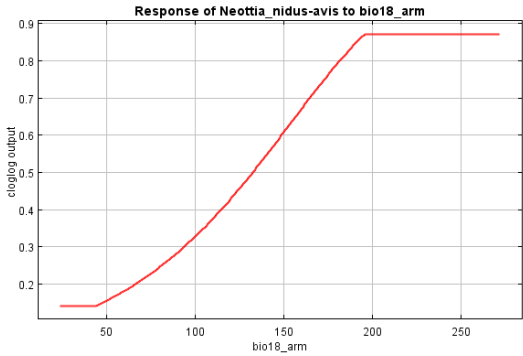
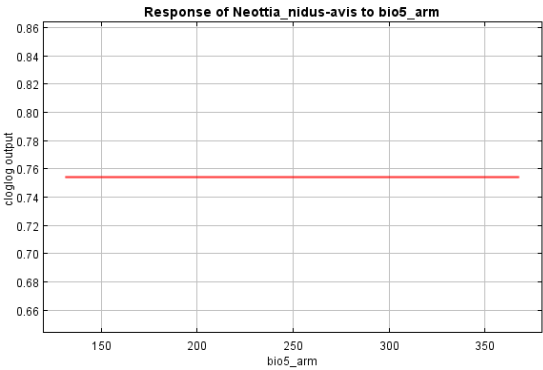
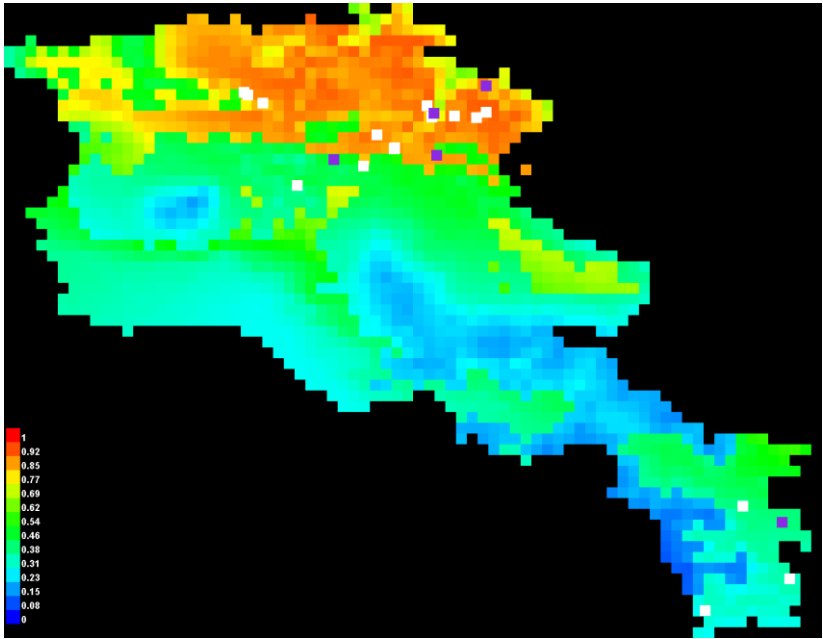
Dactylorhiza euxina



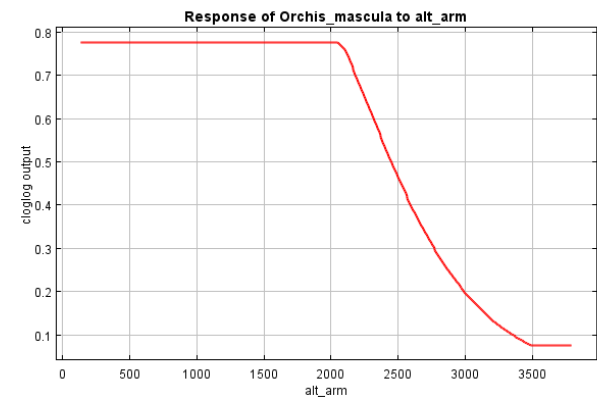
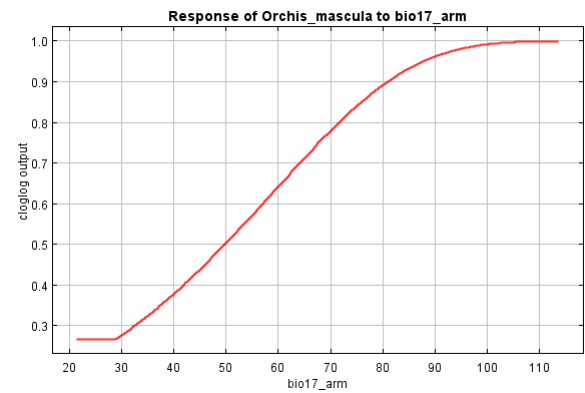
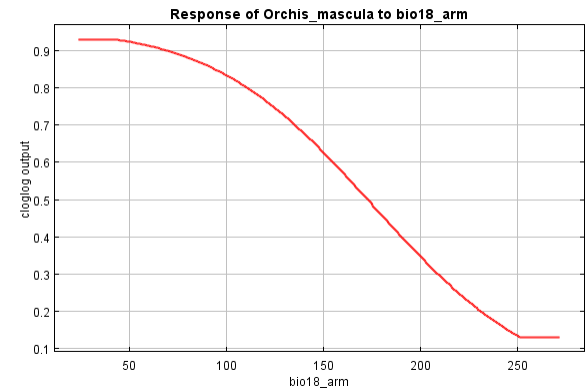
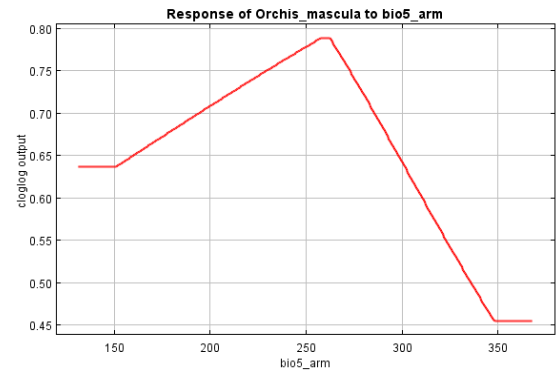
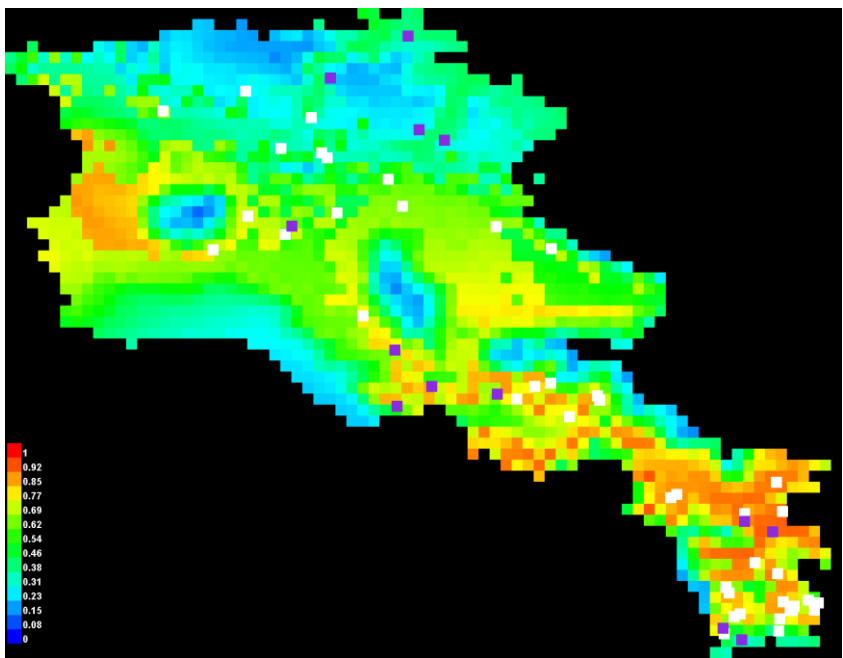
Neotinea tridentata



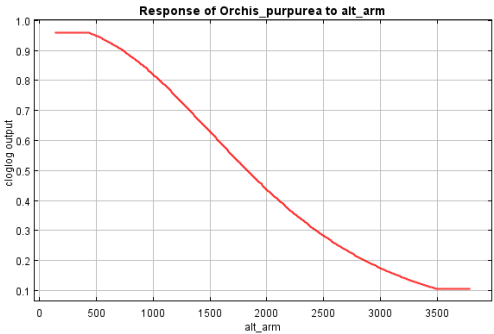
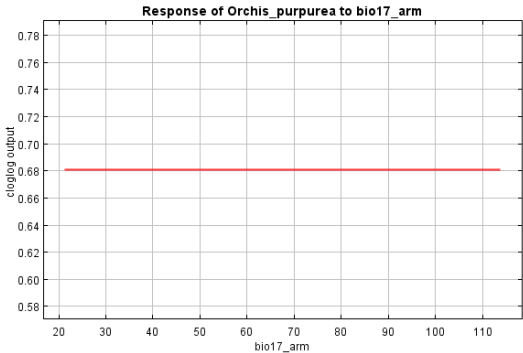
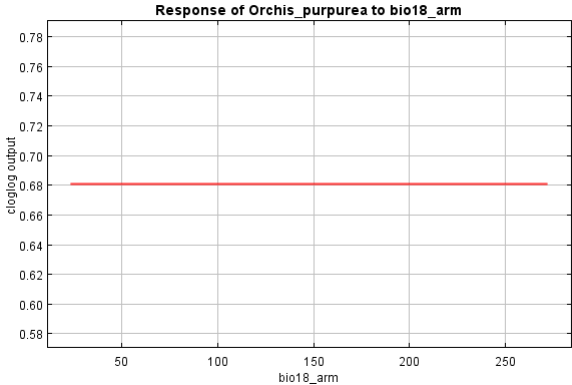
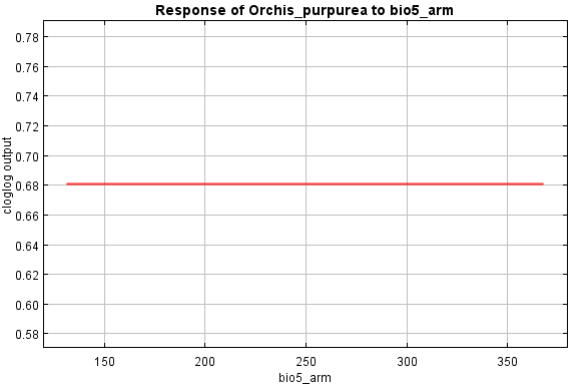
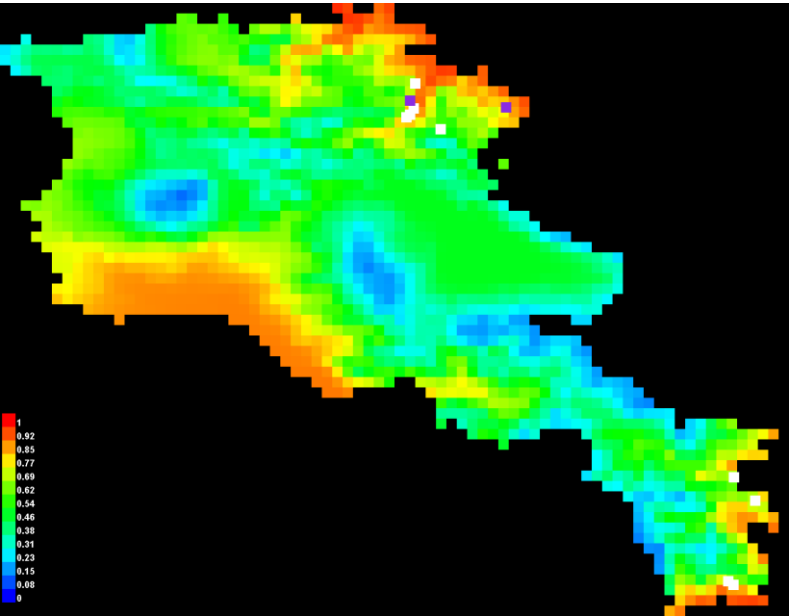
Neottia nidus-avis



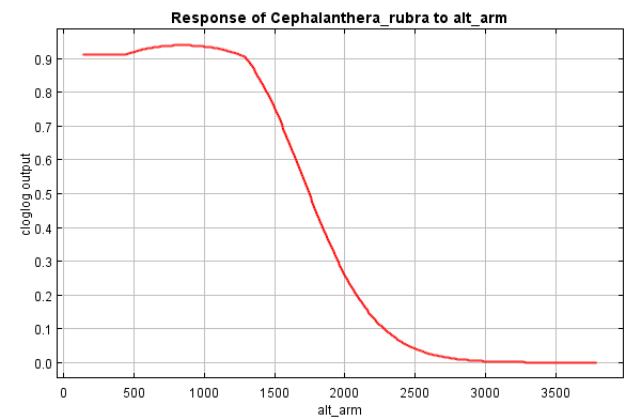
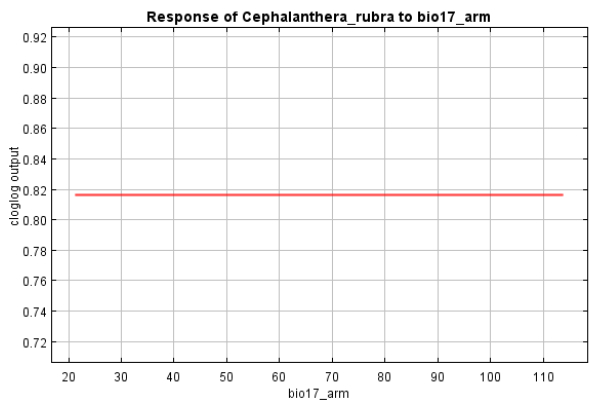
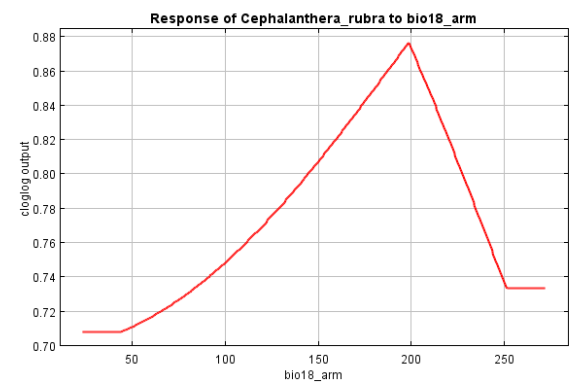
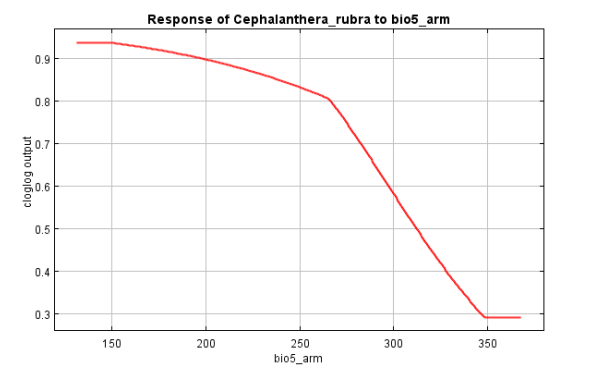
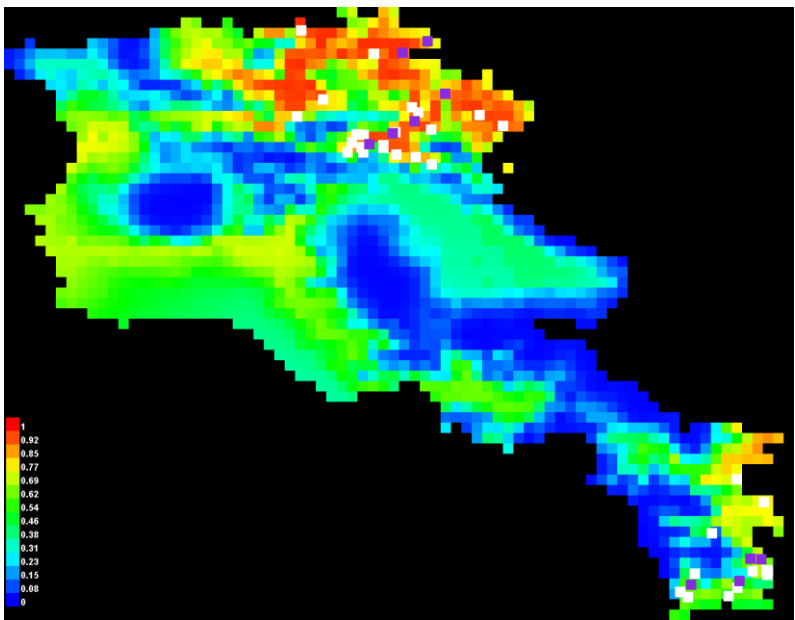
Orchis mascula



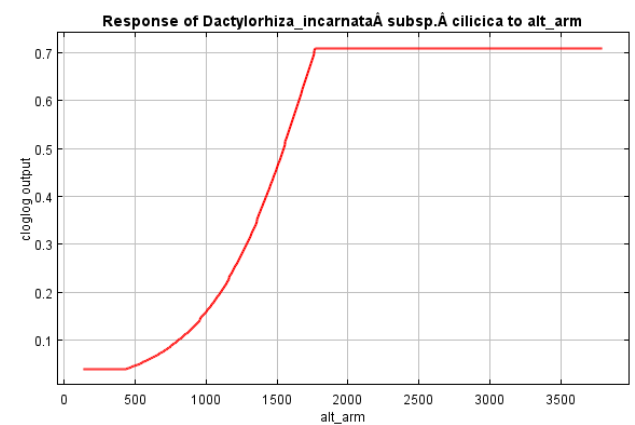
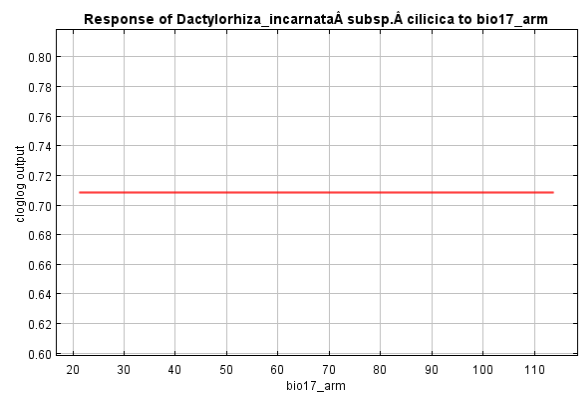
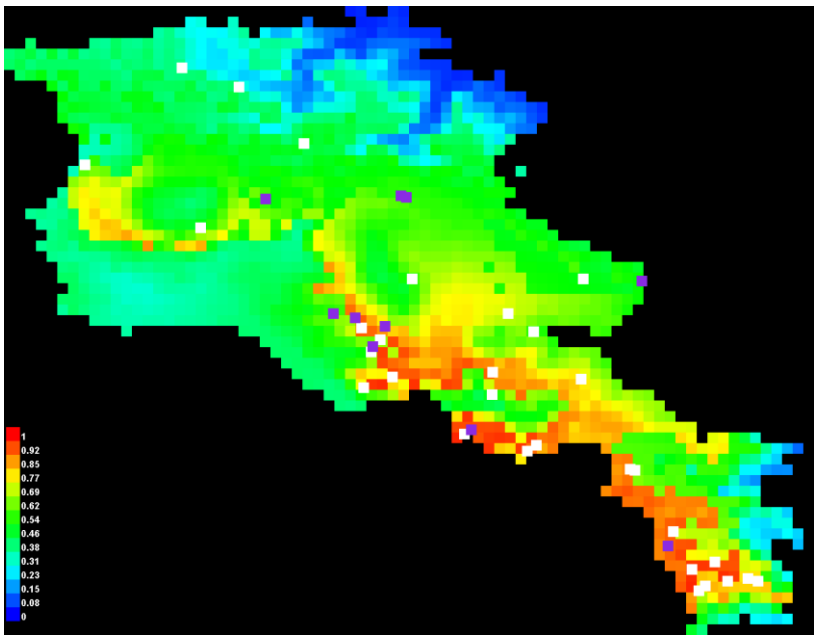
Orchis purpurea



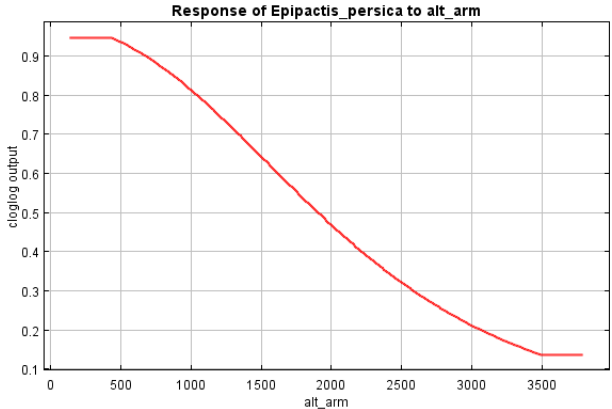
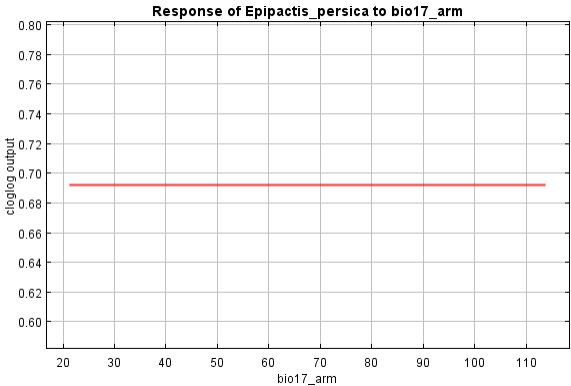
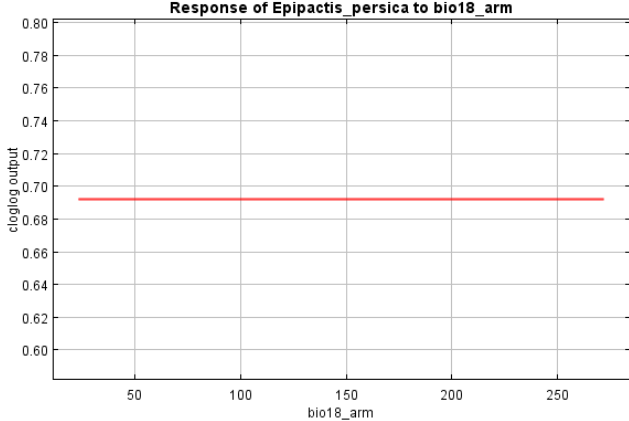
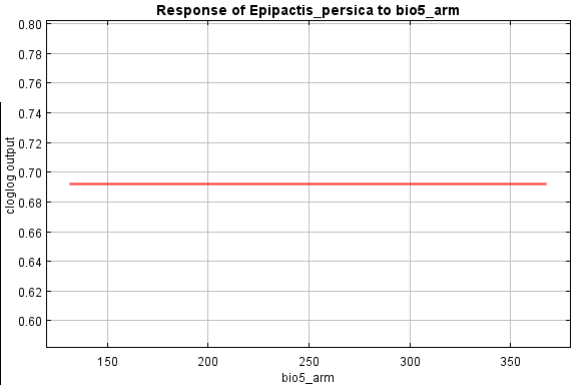
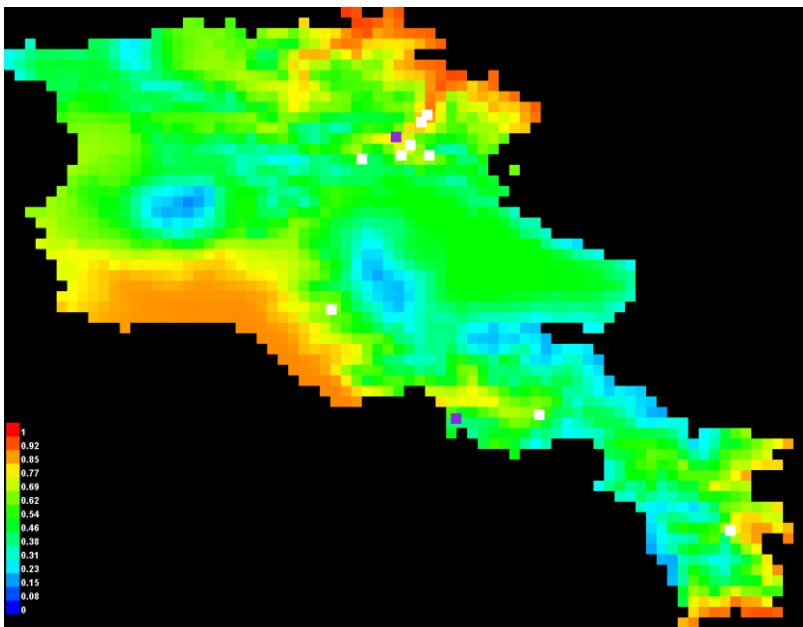
Cephalanthera rubra



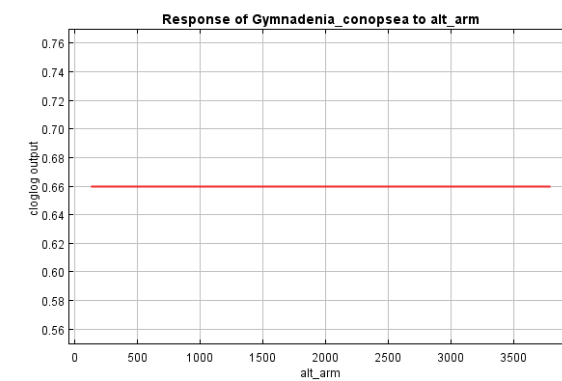
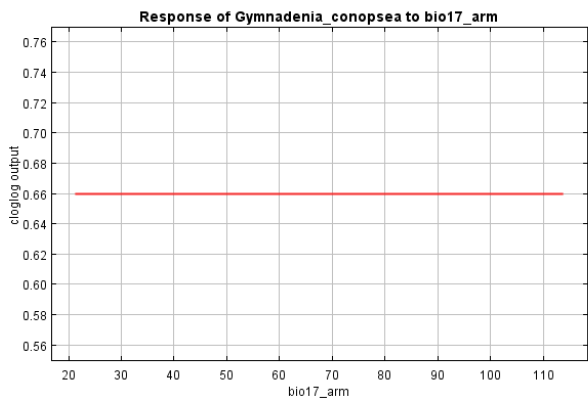
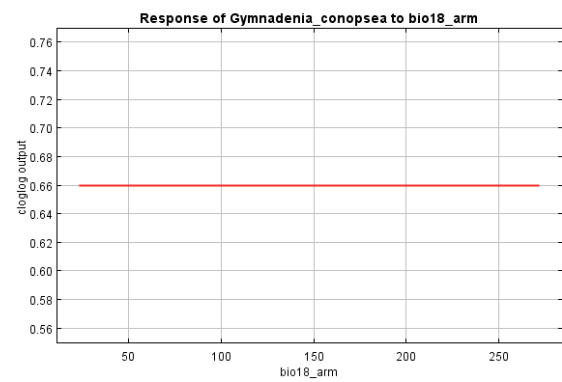
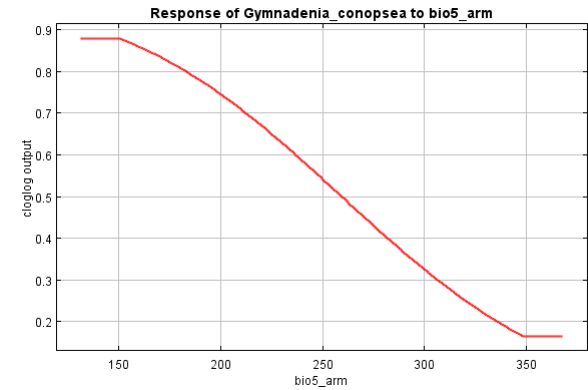
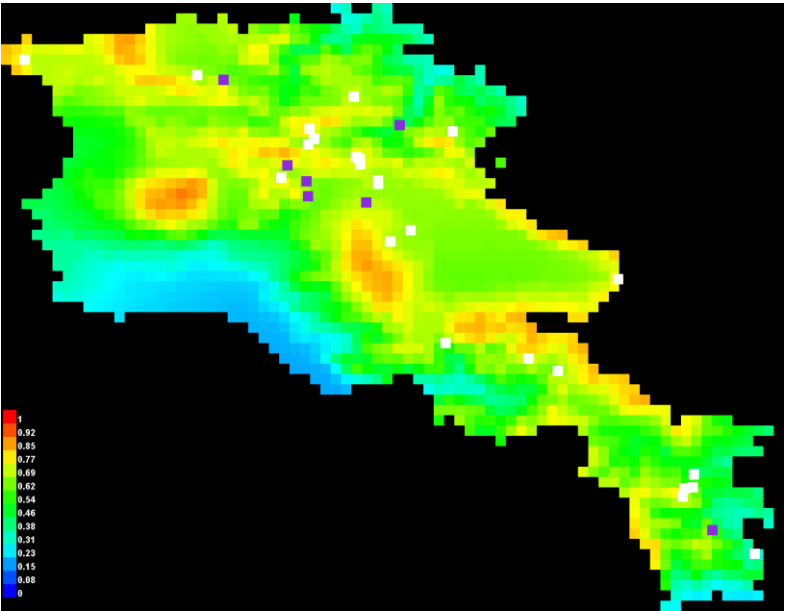
Dactylorhiza incarnata subsp. *cilicica*



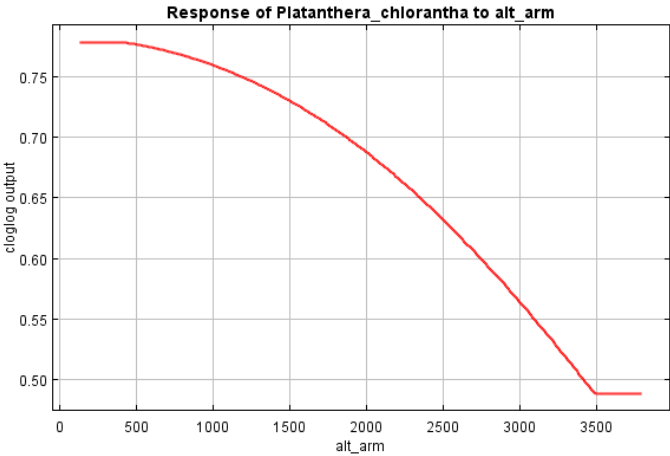
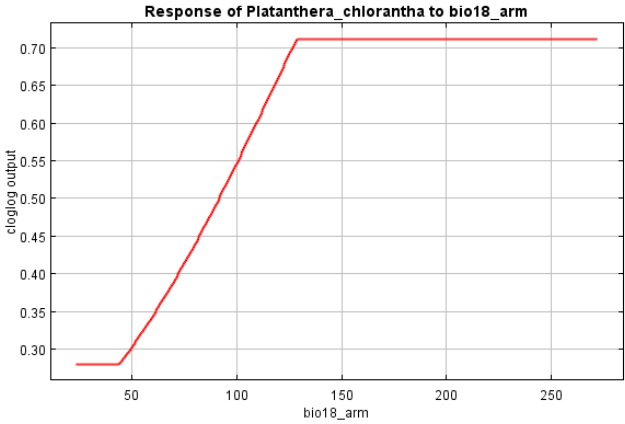
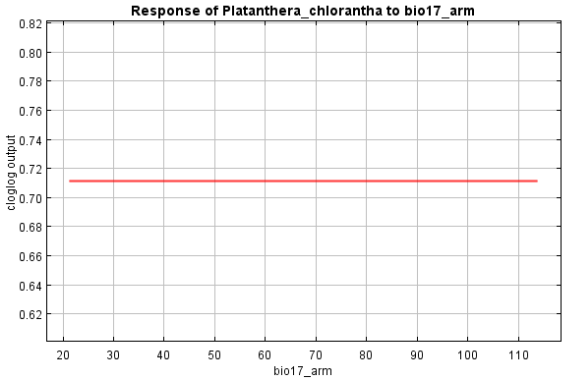
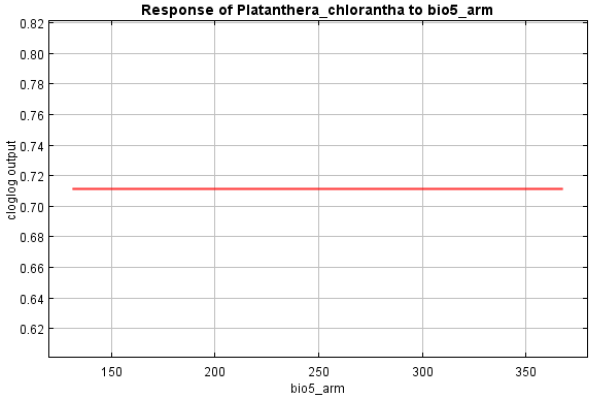
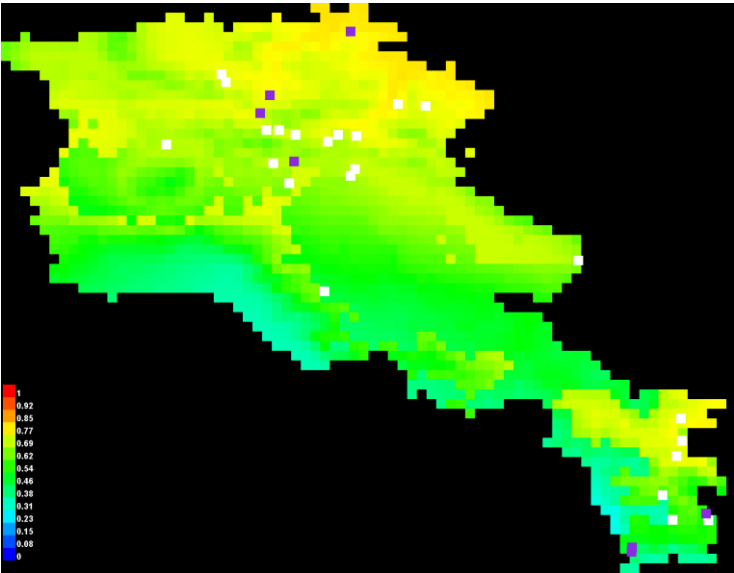
Epipactis persica



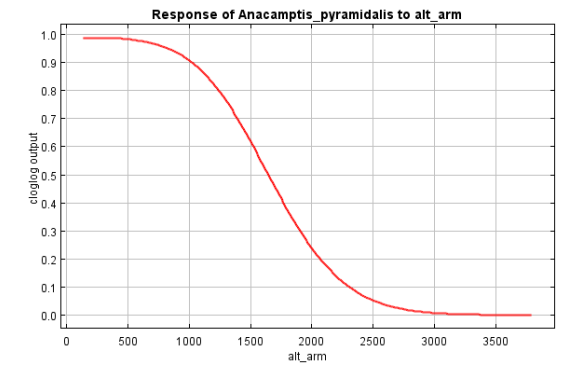
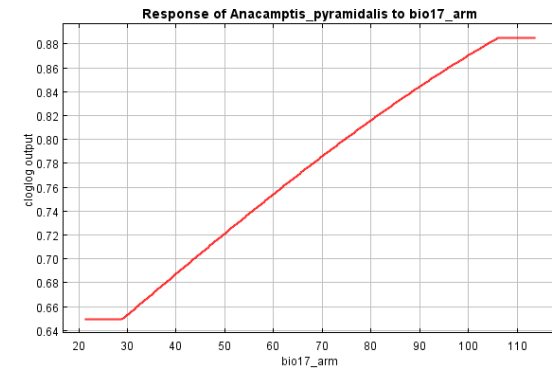
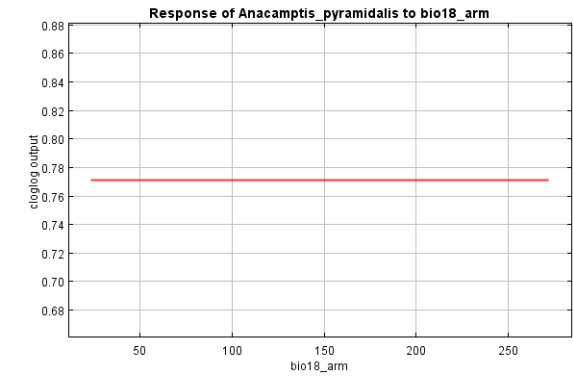
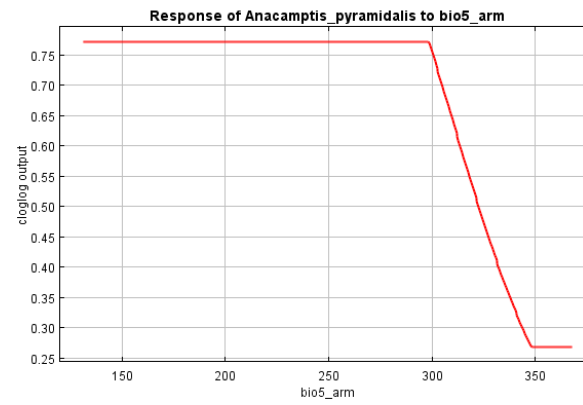
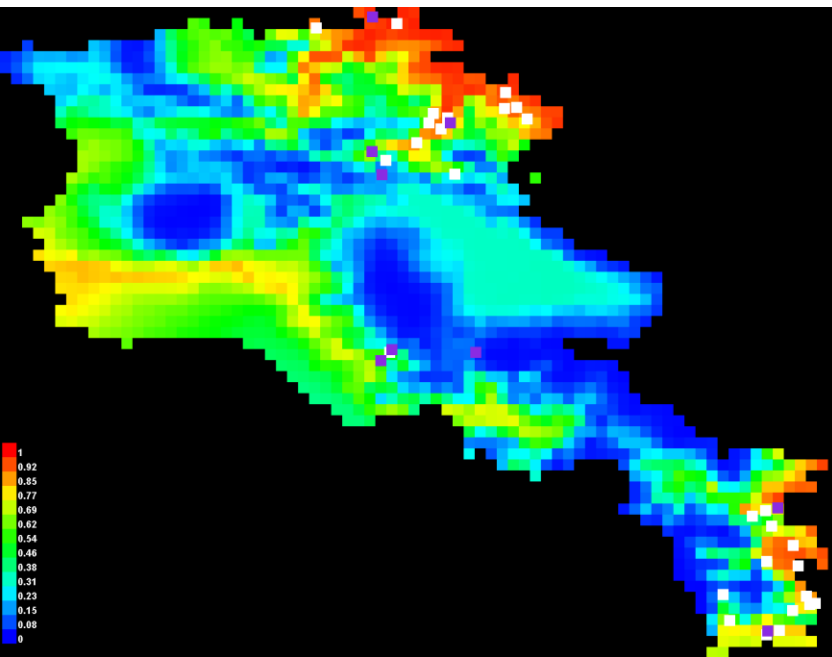
Gymnadenia conopsea



Platanthera chlorantha



Anacamptis pyramidalis



Dactylorhiza urvilleana

