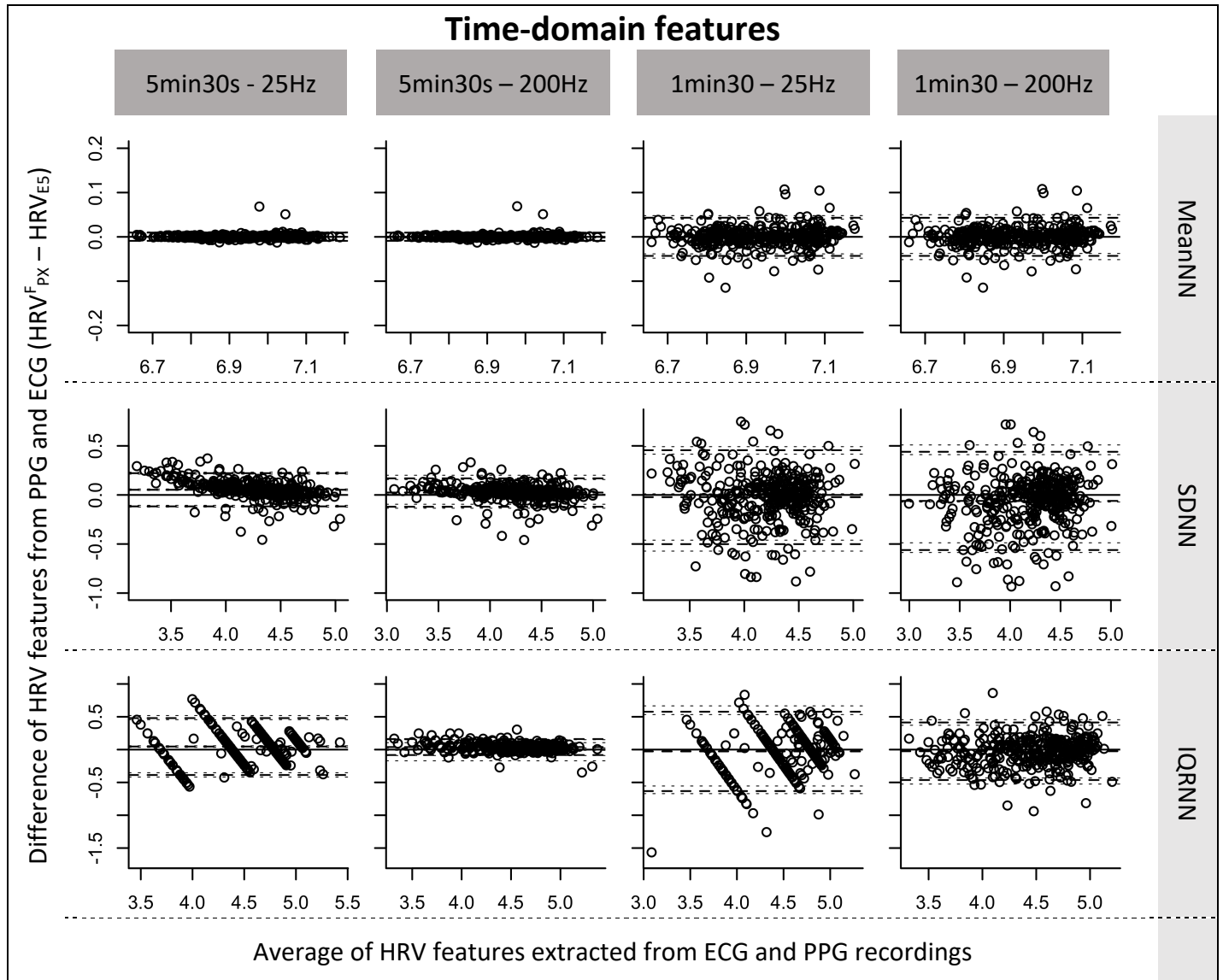
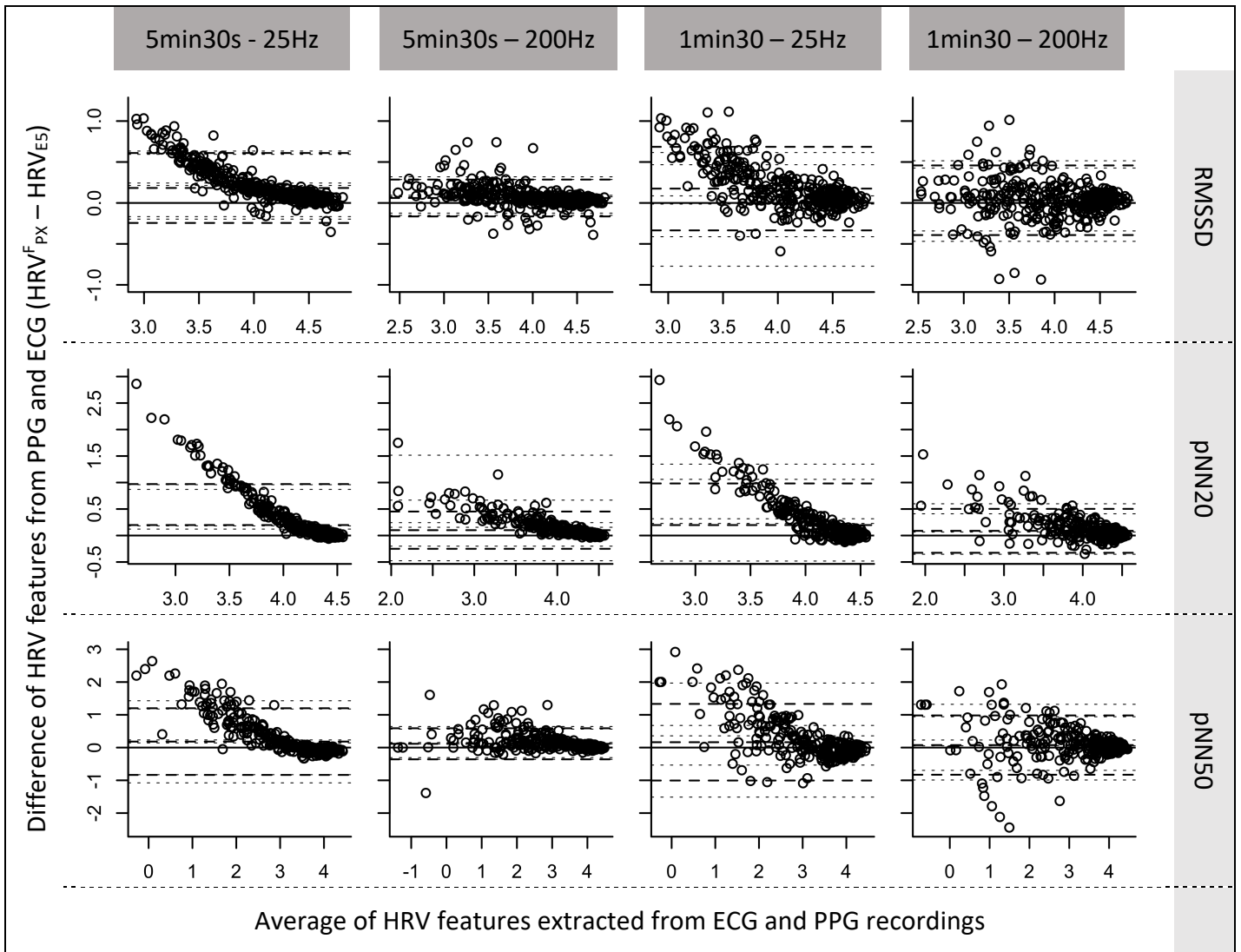


Figure S1. Original Bland-Altman plots for a selection of HRV features extracted from PPG recordings of 5 min 30 s and 1 min 30 s durations and 25 Hz and 200 Hz sampling rates ($HRV_{F_{PX}}$), compared with the HRV features extracted from ECG recordings of 5 min 30 s duration (HRV_{E5}). All HRV features were transformed with the log transformation before plotting the Bland-Altman plots. The selection of the features to be visualized was based on the results presented in Table 2 of the paper and on the correlation coefficients between the valid features. Therefore, only features that were valid in ultra-short recordings and that were not correlated (correlation coefficient < 0.9) with other features were shown hereafter.

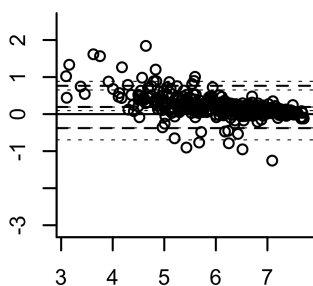




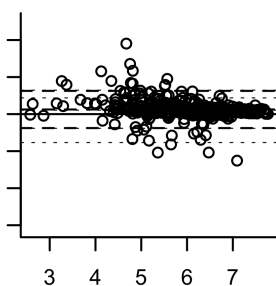
Frequency-domain features

Difference of HRV features from PPG and ECG ($HRV_{PX}^F - HRV_{E5}$)

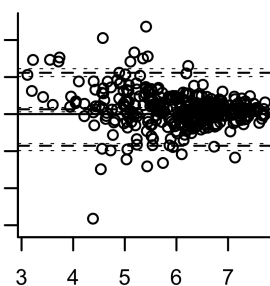
5min30s - 25Hz



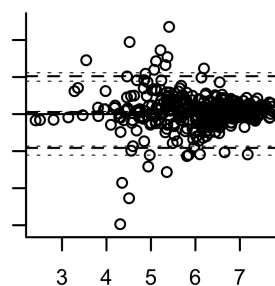
5min30s - 200Hz



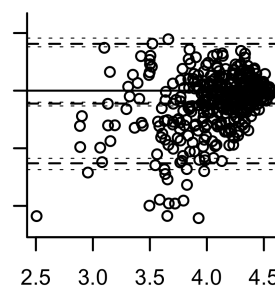
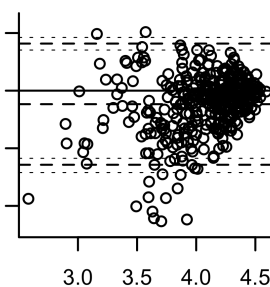
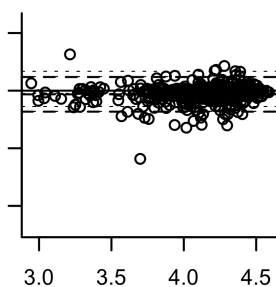
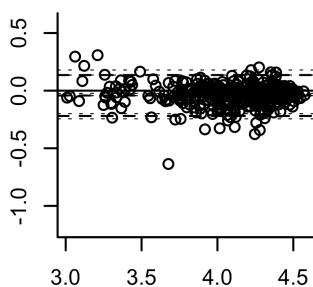
1min30 - 25Hz



1min30 - 200Hz



HF [Fr]



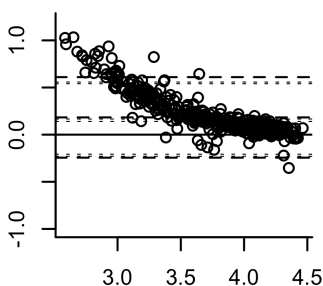
LFnu [Fr]

Average of HRV features extracted from ECG and PPG recordings

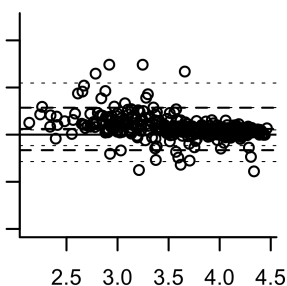
Nonlinear features

Difference of HRV features from PPG and ECG ($HRV_{PX}^F - HRV_{E5}$)

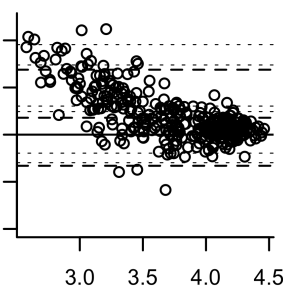
5min30s - 25Hz



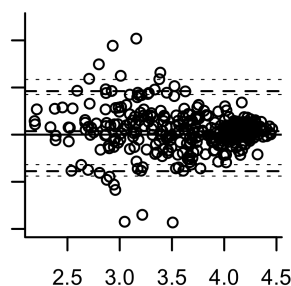
5min30s - 200Hz



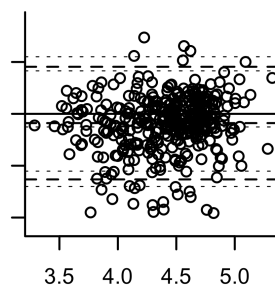
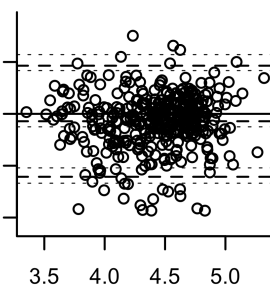
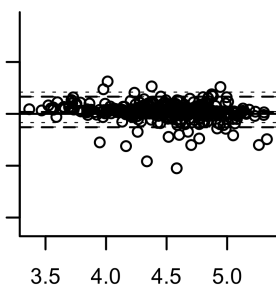
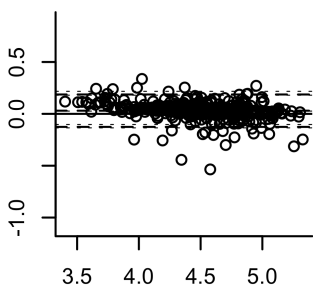
1min30 - 25Hz



1min30 - 200Hz



SD1



SD2

Average of HRV features extracted from ECG and PPG recordings