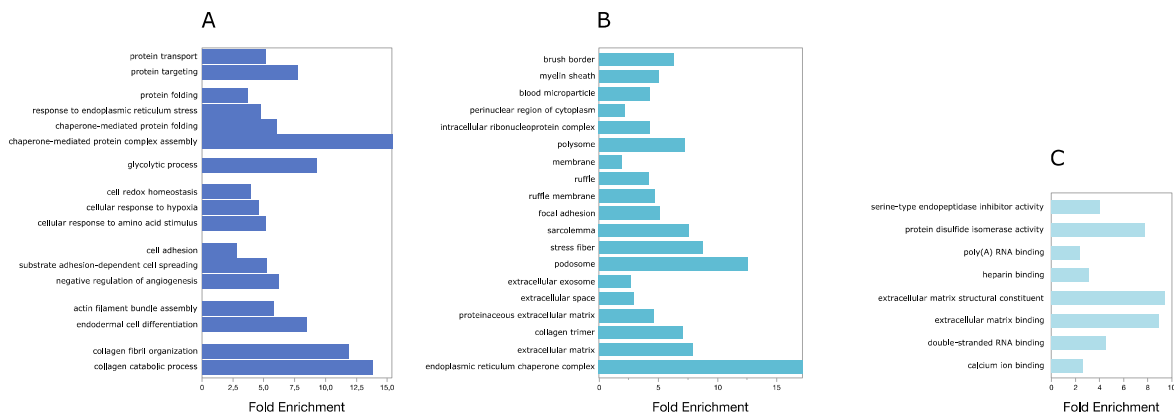
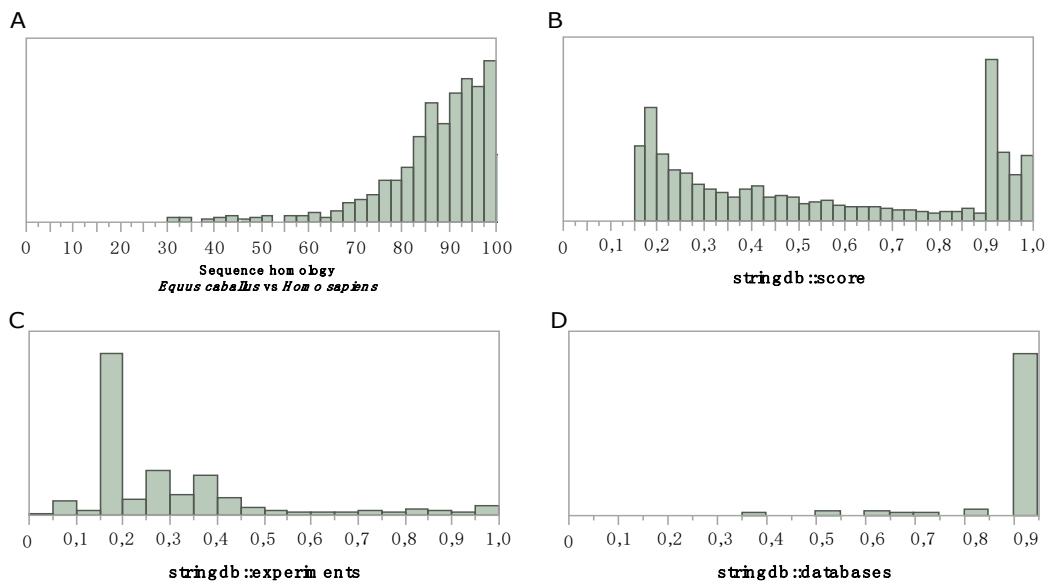


# Equine Lyosecretome for joint regeneration: production process validation and batch release test for clinical use

Michela Mocchi<sup>1§</sup>, Stefano Grolli<sup>2§</sup>, Silvia Dotti<sup>3</sup>, Dario Di Silvestre<sup>4</sup>, Riccardo Villa<sup>3</sup>, Priscilla Berni<sup>2</sup>, Virna Conti<sup>2</sup>, Giulia Passignani<sup>4</sup>, Francesca Brambilla<sup>4</sup>, Laura Catenacci<sup>1</sup>, Milena Sorrenti<sup>1</sup>, Lorena Segale<sup>5</sup>, Elia Bari<sup>1</sup>, Pierluigi Mauri<sup>4</sup>, Maria Luisa Torre<sup>1,6\*</sup>, and Sara Perteghella<sup>1,6</sup>



**Figure S1.** Functional evaluation of the protein profile characterized from equine mesenchymal stem/stromal cells. A) Biological Processes, B) Cellular Components and C) Molecular Functions enriched by considering protein secreted by equine mesenchymal stem/stromal cells. Fold enrichment was calculated by DAVID db ( $p < 0.01$ ).



**Figure S2.** *Equus caballus* protein-protein interaction (PPI) network reconstruction. A) Homology between *Equus caballus* and *Homo sapiens* protein sequences. B) Distribution of the global STRING score, C) experiments STRING score and D) database STRING score found for the protein-protein interactions used to reconstruct the *Equus caballus* PPI network.