

Supplemental Table S1. List of primary antibodies used in this study.

Antibodies	Catalog number	Company
Nitric oxide synthase (iNOS)	sc-651	Santa Cruz Biotechnology (Santa Cruz, CA)
Cyclooxygenase 2 (COX-2)	sc-166475	Santa Cruz Biotechnology
ASC	sc-22514-R	Santa Cruz Biotechnology
Caspase-1 p10	sc-514	Santa Cruz Biotechnology
IL-1 β	sc-7884	Santa Cruz Biotechnology
β -tubulin	sc-5274	Santa Cruz Biotechnology
Phospho-ERK1/2	CST#4370	Cell Signaling (Farmingdale, NY)
ERK1/2	CST#4695	Cell Signaling
Phospho-JNK 1/2	CST#9255	Cell Signaling
JNK 1/2	CST#9258	Cell Signaling
Phospho-p38 MAPK	CST#4511	Cell Signaling
p38 MAPK	CST#8690	Cell Signaling
Phospho-NF- κ B	CST#3033	Cell Signaling
NF- κ B p65	CST#8284	Cell Signaling
Phospho-I κ B	CST#2859	Cell Signaling
I κ B	CST#4814	Cell Signaling
NLRP3	CST#15101	Cell Signaling
Cleaved caspase-1	CST#67314	Cell Signaling
Cleaved IL-1 β	CST#52718	Cell Signaling
β -actin	GTX629630	GeneTex (Irvine, CA)
Lamin A+C	GTX101127	GeneTex

Supplemental material: Western blot raw images.
Figure.S1

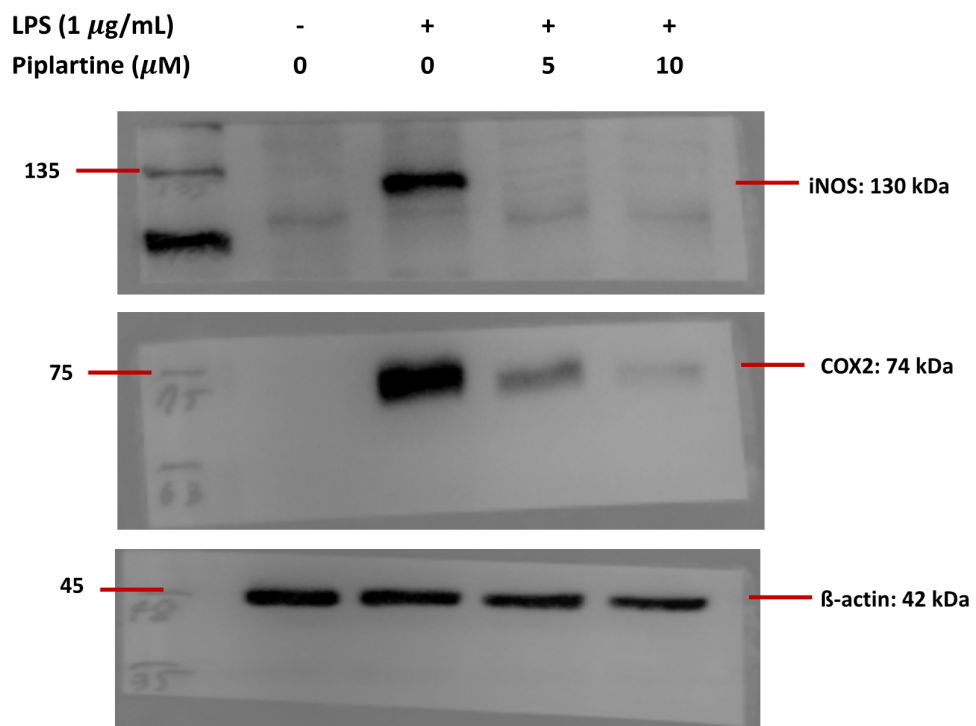


Figure.S2

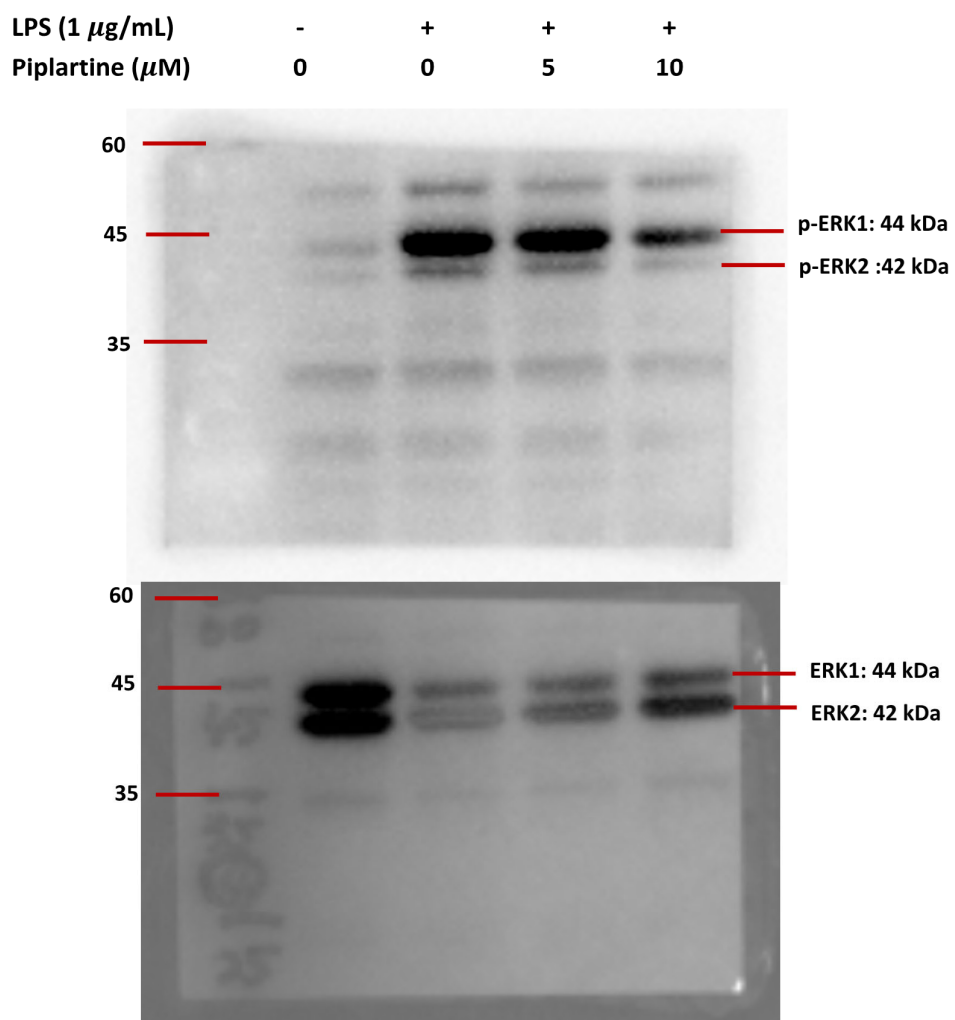


Figure.S2

LPS (1 μ g/mL)	-	+	+	+
Pipltartine (μ M)	0	0	5	10

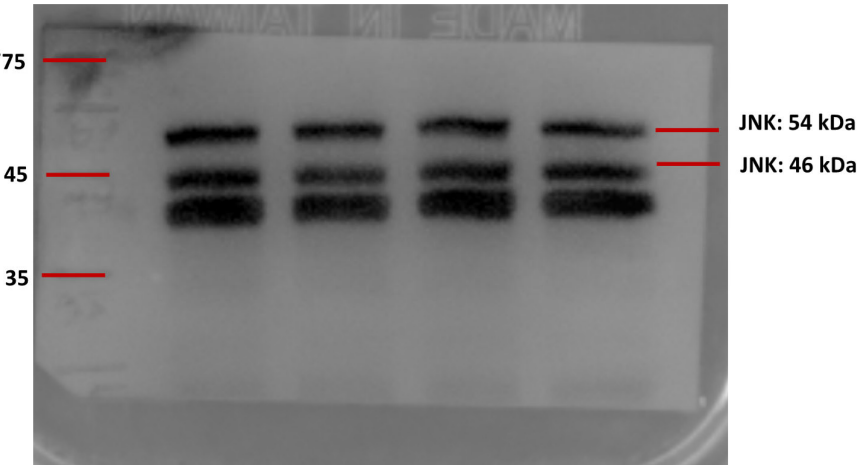
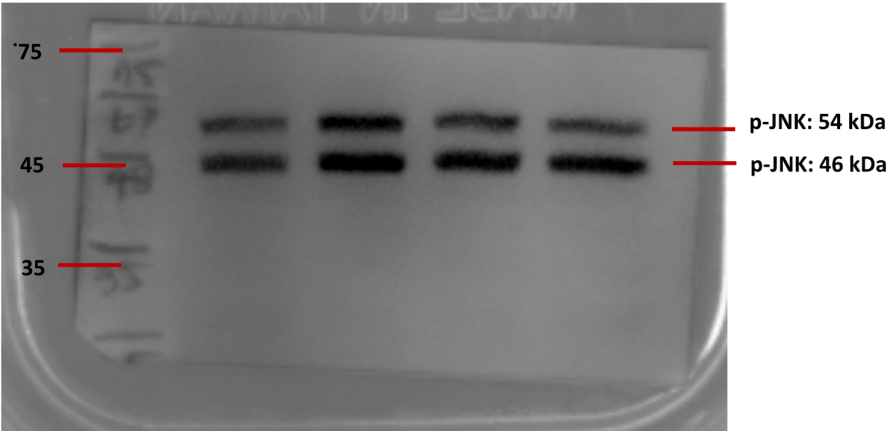


Figure.S2

LPS (1 μ g/mL)	-	+	+	+
Pipltartine (μ M)	0	0	5	10

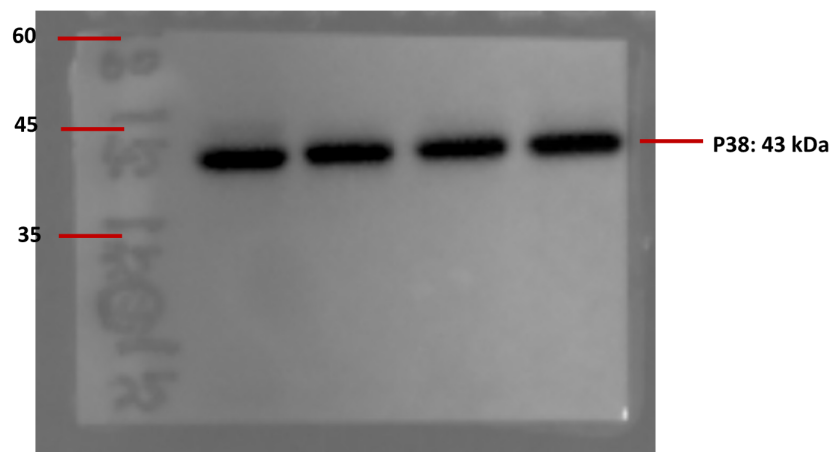
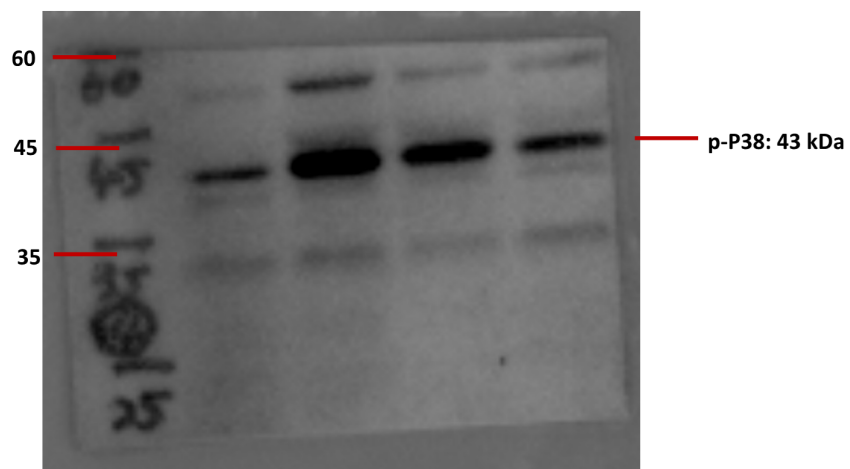


Figure.S2

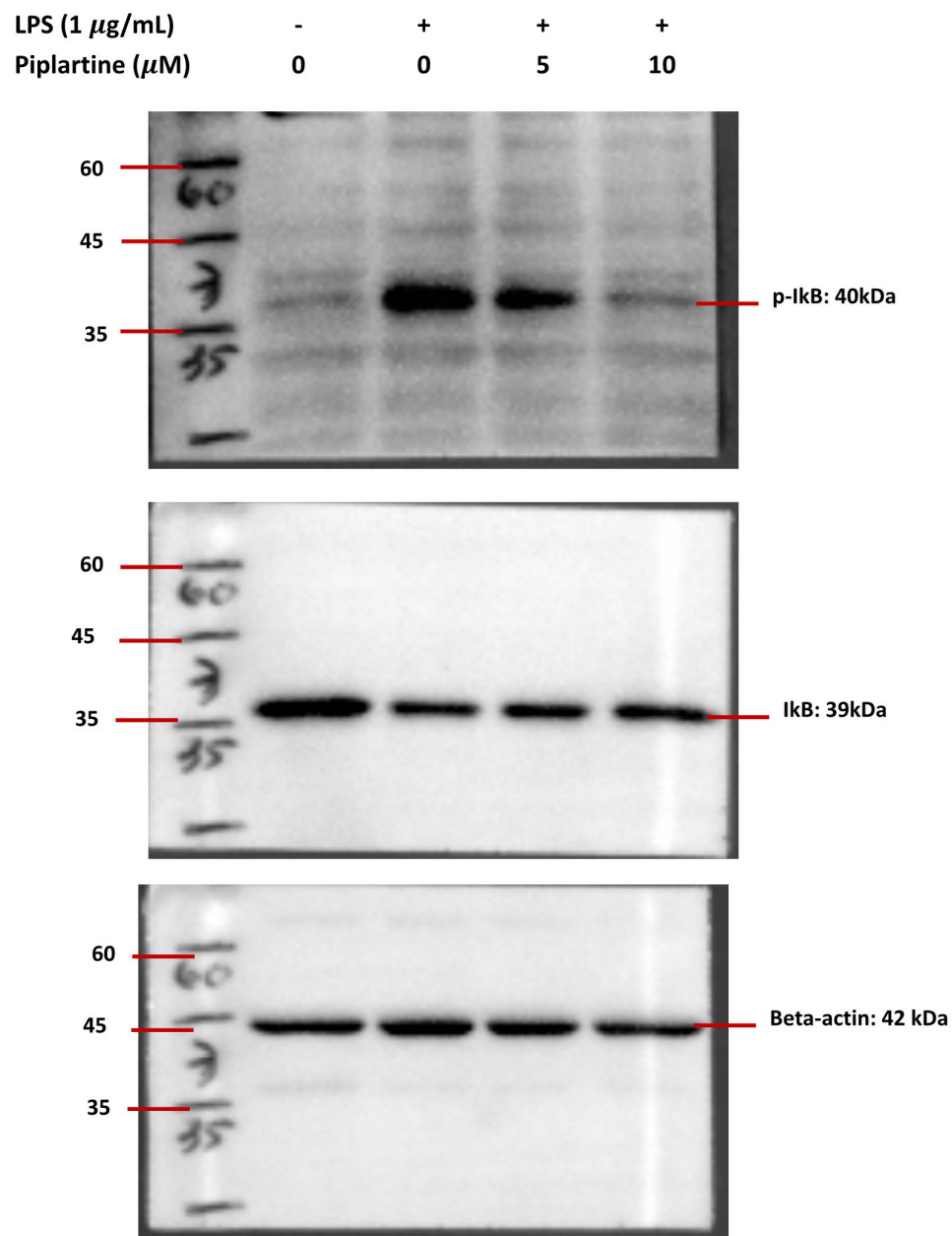


Figure.S2

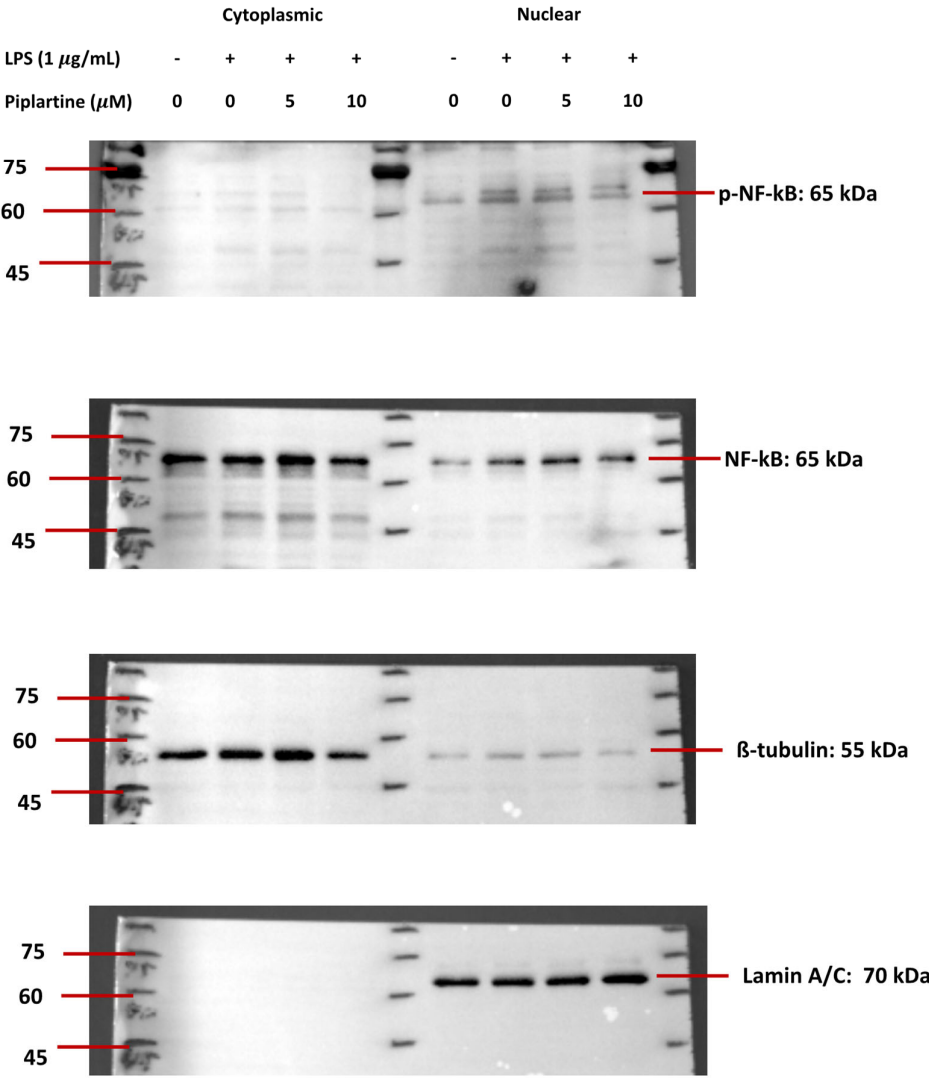


Figure.S3

LPS (1 $\mu\text{g/mL}$)	-	+	+	+	+
Pipltartine (μM)	0	0	0	5	10
ATP (5 mM)	-	-	+	+	+

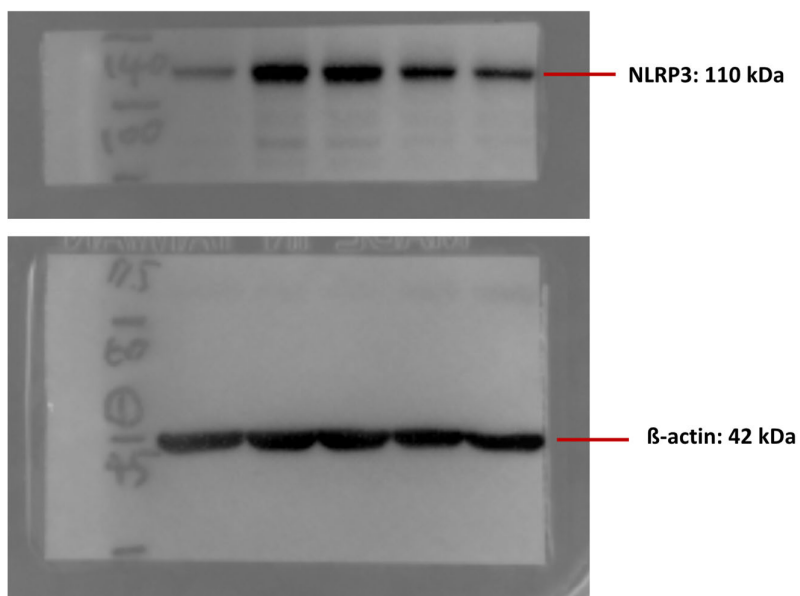
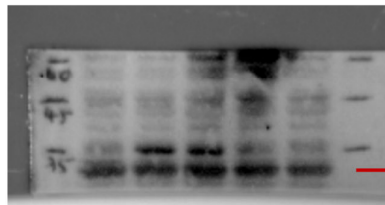
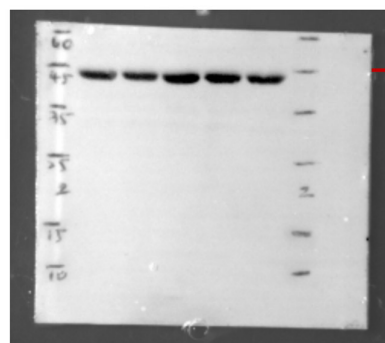


Figure.S3

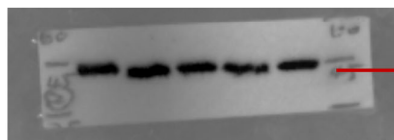
LPS (1 μ g/mL)	-	+	+	+	+
Pipltartine (μ M)	0	0	0	5	10
ATP (5 mM)	-	-	+	+	+



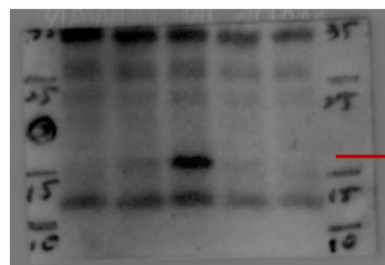
Pro-IL-1 β : 32 kDa



β -actin: 42 kDa



β -actin: 42 kDa



cleaved-IL-1 β : 17 kDa

Figure.S3

LPS (1 $\mu\text{g/mL}$)	-	+	+	+	+
Piplartine (μM)	0	0	0	5	10
ATP (5 mM)	-	-	+	+	+

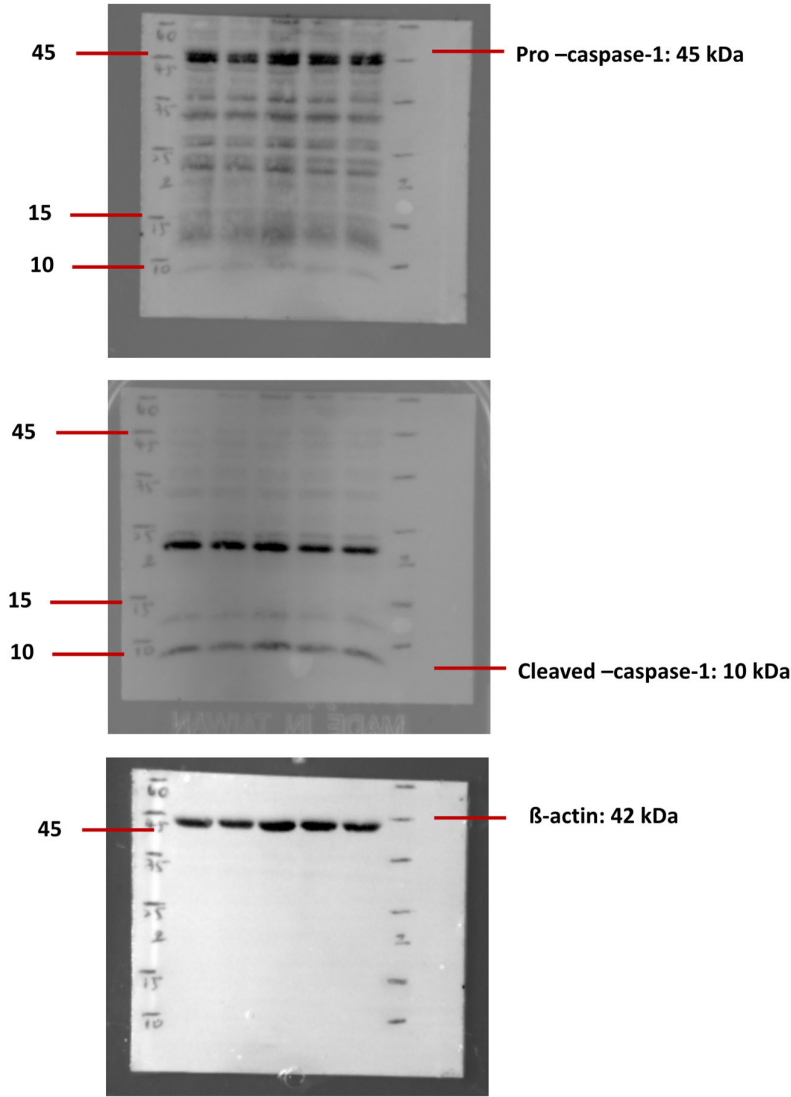


Figure.S3

LPS (1 μ g/mL)	-	+	+	+	+
Pipltartine (μ M)	0	0	0	5	10
ATP (5 mM)	-	-	+	+	+

