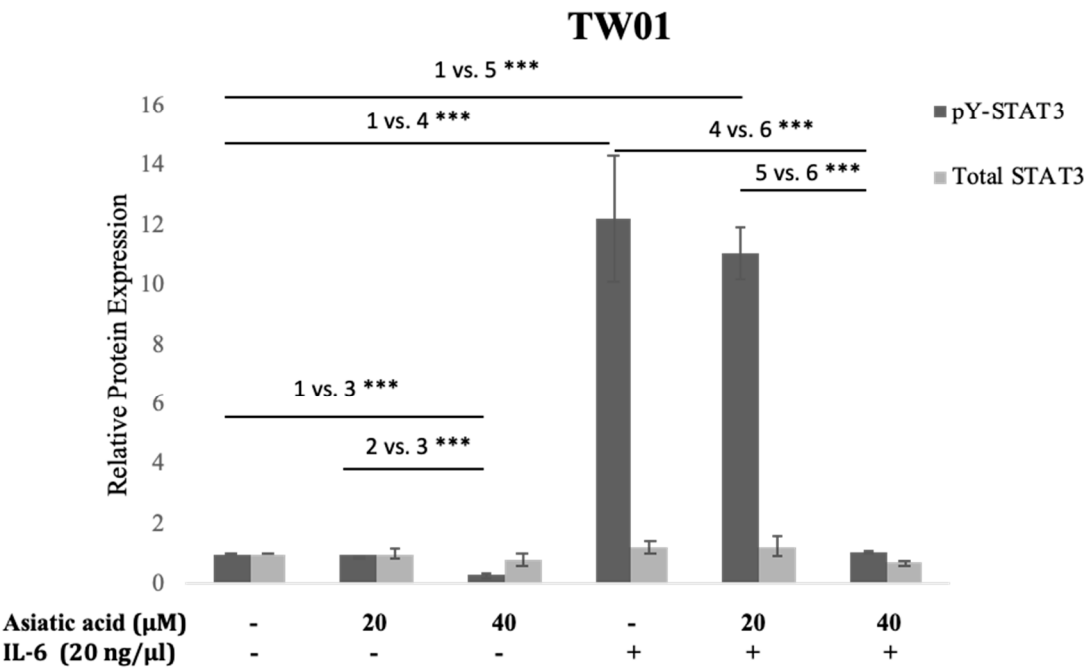
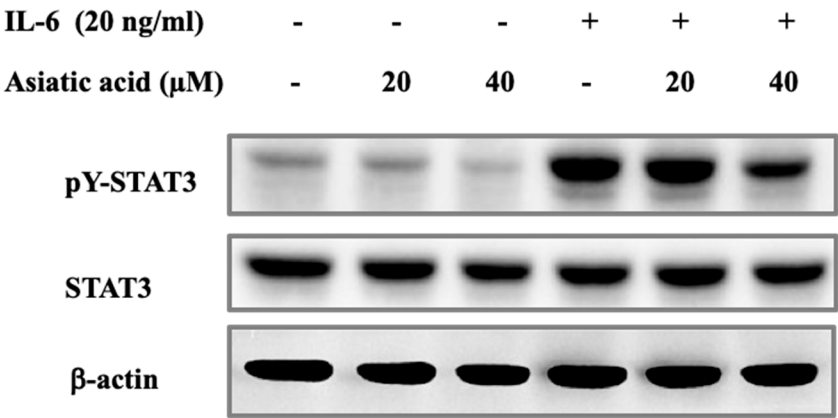


Supplementary Figure

A

TW01



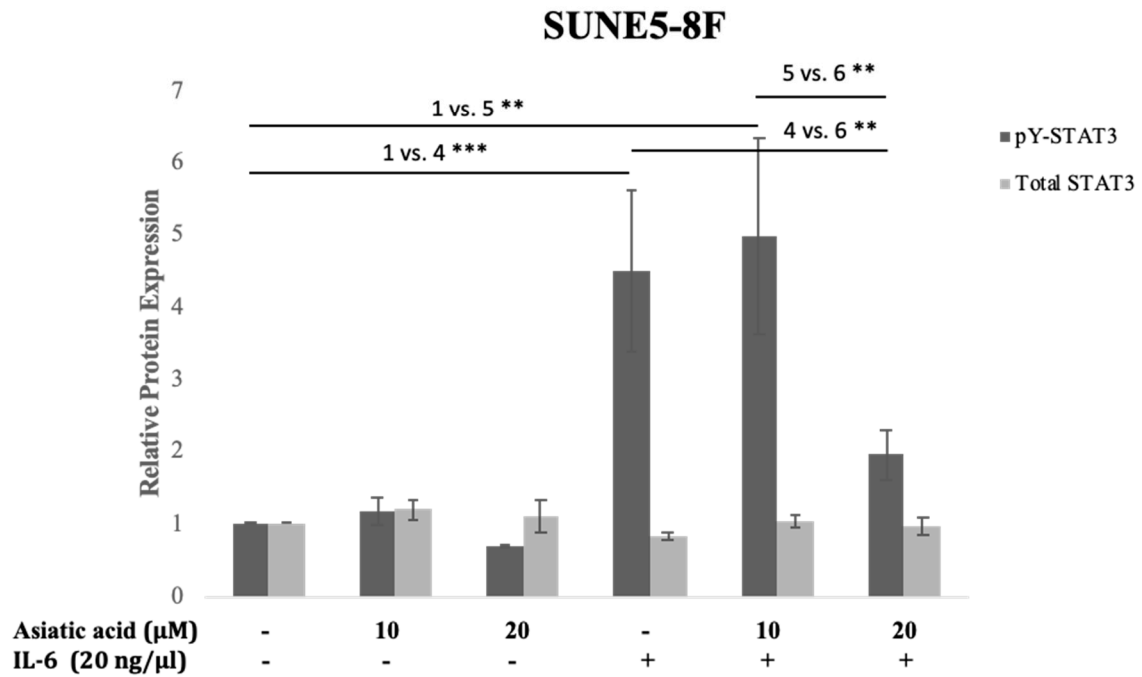
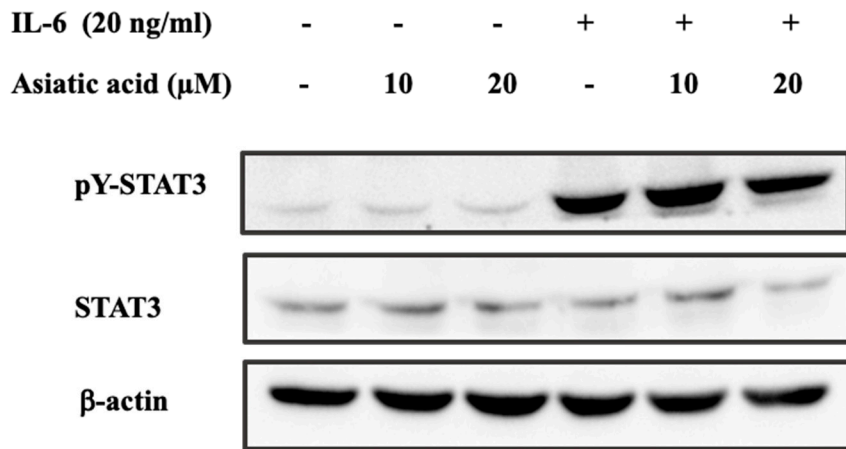
B**SUNE5-8F**

Figure S1. Asiatic acid inhibits constitutive STAT3 and IL-6-induced STAT3 phosphorylation in nasopharyngeal carcinoma cells. (A) TW01 and (B) SUNE5-8F cells were pretreated with asiatic acid at the indicated concentrations for 24 h and then stimulated with 20 ng/ml of IL-6 for 30 min. Western blot analysis was performed to examine the levels of phospho-STAT3 protein expression in TW01 and SUNE5-8F cells. β-actin was used as a loading control. Densitometry analysis of protein expression was quantified using ImageJ software. Data represented as mean ± SE from three independent experiments. * $p \leq 0.05$, ** $p \leq 0.01$, *** $p \leq 0.001$ using one-way ANOVA followed by Tukey's honestly significant difference test.