

Supplementary Figures for Development of Genus-Specific PCR Primers for Molecular Monitoring of Invasive Nostocalean Cyanobacteria

In-Soo Kim^a, Hae-Kyung Park^{a*}, Yong-Jin Kim^a

^a Nakdong River Environment Research Center, National Institute of Environmental Research, Daegu, Republic of Korea

* Corresponding author : Hae-Kyung Park, parkhknier@korea.kr

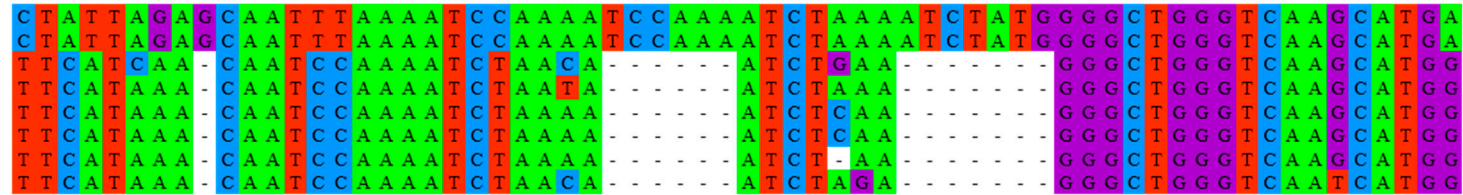
Supplementary Figures contain:

5 pages

4 figures

a)

Sphaerospermopsis aphanizomenoides
Sphaerospermopsis reniformis
Aphanizomenon flos-aquae
Aphanizomenon gracile
Dolichospermum planctonicum
Dolichospermum circinale
Dolichospermum flos-aquae
Cuspidothrix issatschenkoi



b)

Sphaerospermopsis aphanizomenoides
Sphaerospermopsis reniformis
Aphanizomenon flos-aquae
Aphanizomenon gracile
Dolichospermum planctonicum
Dolichospermum circinale
Dolichospermum flos-aquae
Cuspidothrix issatschenkoi

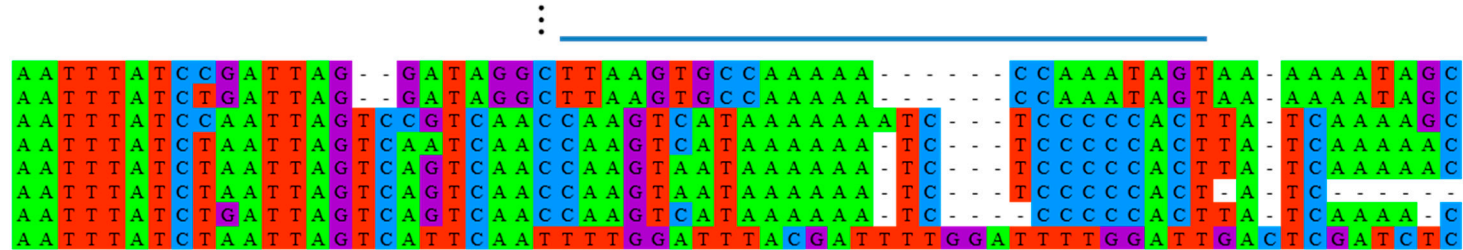
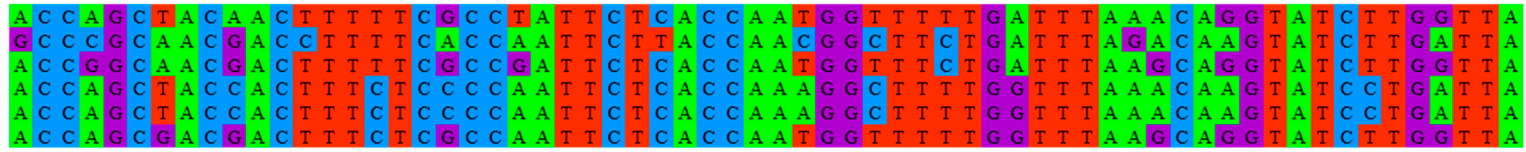


Figure S1. The results of multiple-sequence comparative analysis of *rbcLX* gene sequences from the nostocalean cyanobacteria; a) forward, b) reverse sequence.

a)

Cuspidothrix issatschenkoi
Aphanizomenon flos-aquae
Aphanizomenon gracile
Dolichospermum planctonicum
Dolichospermum circinale
Dolichospermum flos-aquae



⋮

b)

Cuspidothrix issatschenkoi
Aphanizomenon flos-aquae
Aphanizomenon gracile
Dolichospermum planctonicum
Dolichospermum circinale
Dolichospermum flos-aquae

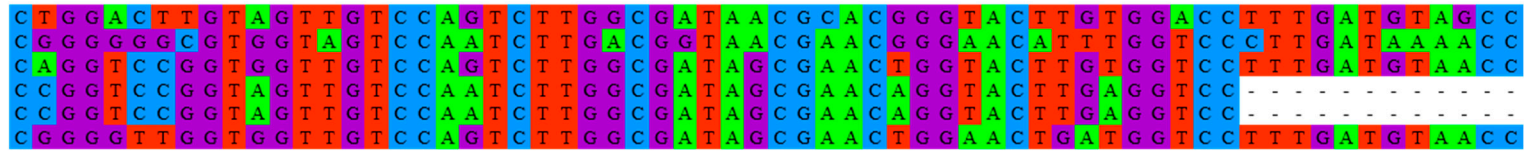
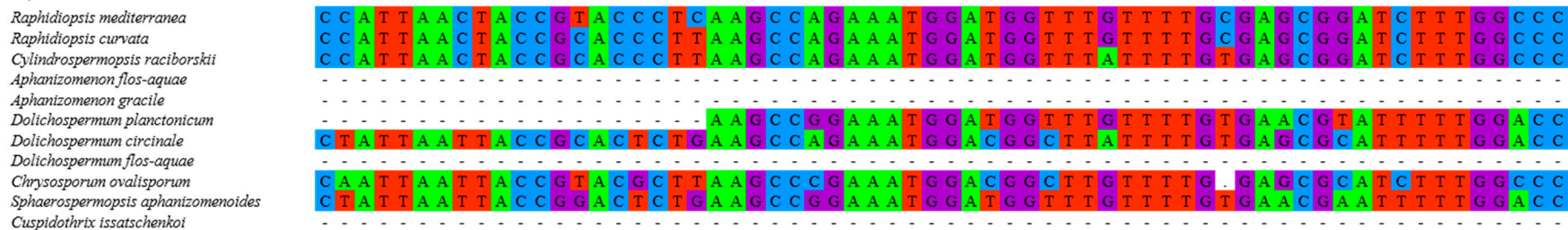


Figure S2. The results of multiple-sequence comparative analysis of *rpoB* gene sequences from the nostocalean cyanobacteria; a) forward, b) reverse sequence.

a)



b)

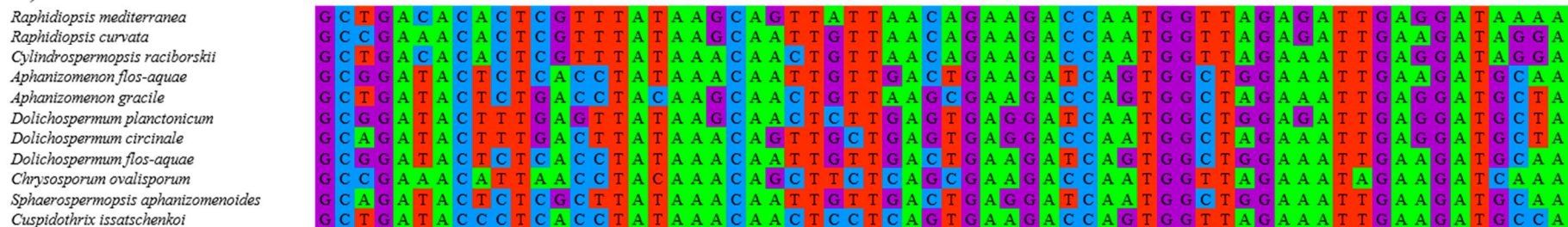
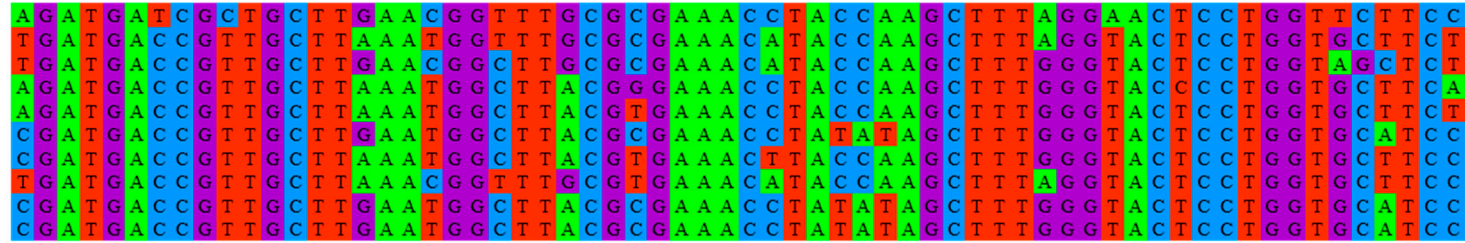


Figure S3. The results of multiple-sequence comparative analysis of *rpoC1* gene sequences from the nostocalean cyanobacteria; a) forward, b) reverse sequence.

a)

Chrysoosporum ovalisporum
Aphanizomenon flos-aquae
Aphanizomenon gracile
Dolichospermum planctonicum
Dolichospermum flos-aquae
Cylindrospermopsis raciborskii
Sphaerospermopsis aphanizomenoides
Cuspidothrix issatschenkoi
Raphidiopsis mediterranea
Raphidiopsis curvata



b)

Chrysoosporum ovalisporum
Aphanizomenon flos-aquae
Aphanizomenon gracile
Dolichospermum planctonicum
Dolichospermum flos-aquae
Cylindrospermopsis raciborskii
Sphaerospermopsis aphanizomenoides
Cuspidothrix issatschenkoi
Raphidiopsis mediterranea
Raphidiopsis curvata

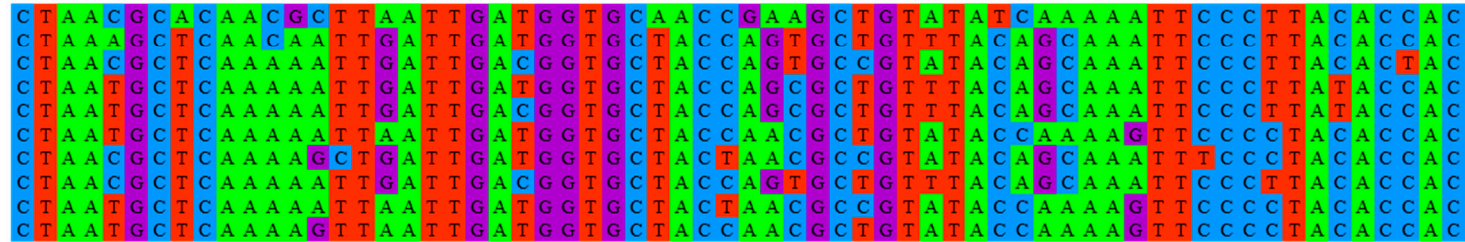


Figure S4. The results of multiple-sequence comparative analysis of *cpcBA* gene sequences from the nostocalean cyanobacteria; a) forward, b) reverse sequence.