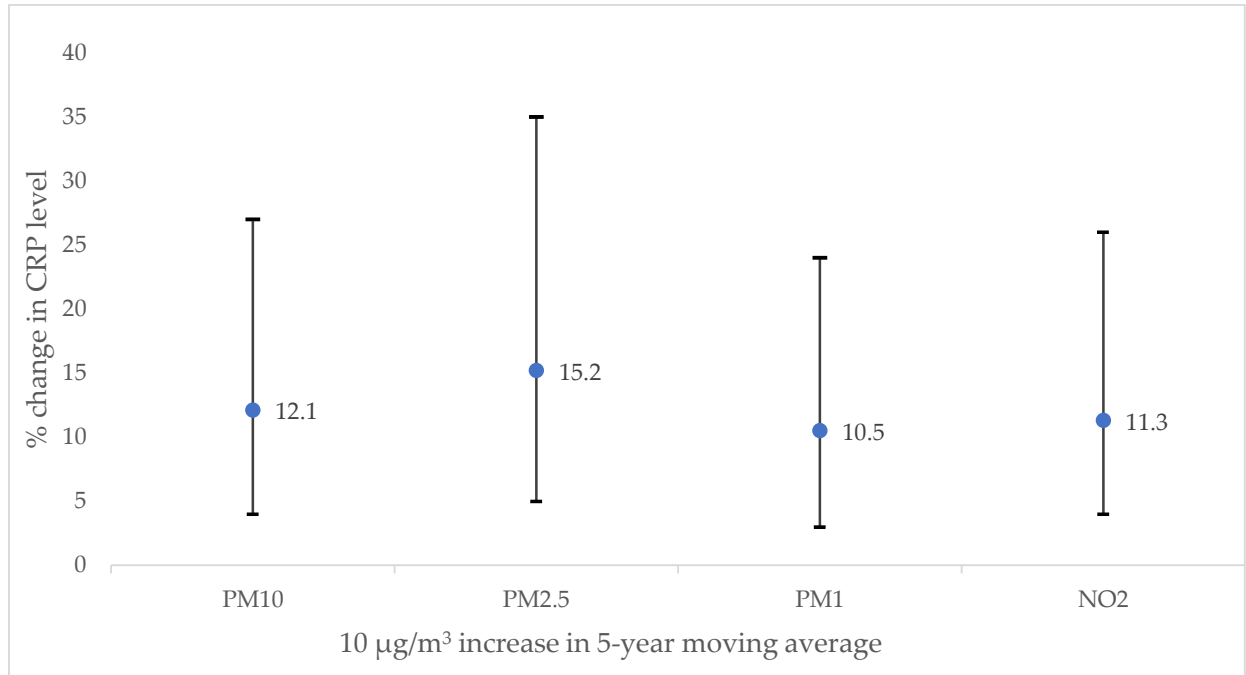
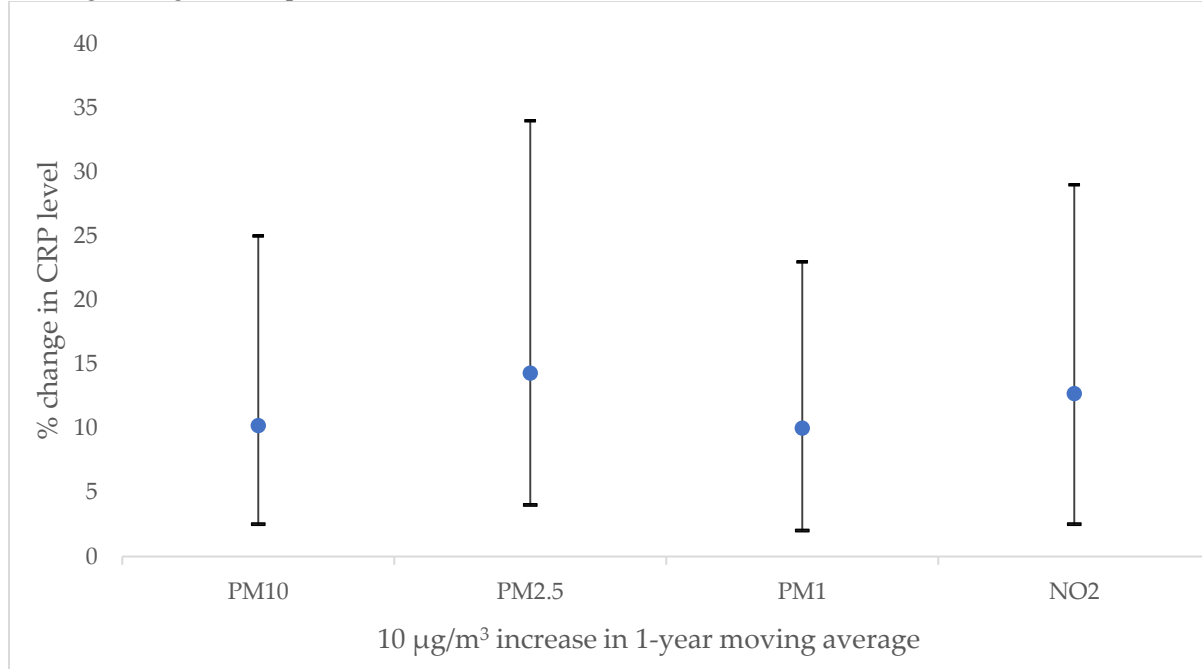


Figure S1: Percentage change (95% CI) in hs-CRP levels associated with 10 $\mu\text{g}/\text{m}^3$ increase in 5-years moving averages of air pollution.



PM₁₀, particulate matter with a diameter of 10 μm or less; PM_{2.5}, with a diameter of 2.5 μm or less; PM₁, particulate matter with a diameter of 1 μm or less; NO₂, nitrogen dioxide.

Figure S2: Percentage change (95% CI) in hs-CRP levels associated with 10 $\mu\text{g}/\text{m}^3$ increase in 1-year moving averages of air pollution.



PM₁₀, particulate matter with a diameter of 10 μm or less; PM_{2.5}, with a diameter of 2.5 μm or less, PM₁, particulate matter with a diameter of 1 μm or less; NO₂, nitrogen dioxide.

Table S1. Results of 10-fold cross-validation for PM₁, PM_{2.5}, PM₁₀, and NO₂.

Pollutants	Daily Model		Annual Averages	
	CV R ²	RMSE	CV R ²	RMSE
PM ₁	55%	20.5 $\mu\text{g}/\text{m}^3$	75%	8.8 $\mu\text{g}/\text{m}^3$
PM _{2.5}	83%	18.1 $\mu\text{g}/\text{m}^3$	86%	6.9 $\mu\text{g}/\text{m}^3$
PM ₁₀	78%	31.5 $\mu\text{g}/\text{m}^3$	81%	14.4 $\mu\text{g}/\text{m}^3$
NO ₂	64%	12.4 $\mu\text{g}/\text{m}^3$	72%	6.5 $\mu\text{g}/\text{m}^3$

RMSE: Root mean square error; CV: cross-validation.

Table S2. Characteristics of the study participants and non-participants (without CRP sample).

	No (n)	%	Yes (n)	%	p-value*
CRP	5,452	40.8%	7,915	59.2%	
Age (mean, SD)	63.1 (9.6)		63.2 (9.4)		0.392
Sex					
Female	2,952	41.6%	4,141	58.4%	0.000
Male	2,500	39.8%	3,774	60.2%	
Smoking					
Ever smoker	3,368	39.0%	5,275	61.0%	0.000
Never smoker	1,707	39.5%	2,615	60.5%	
Alcohol					
No	3,458	38.6%	5,496	61.4%	0.561
Yes	1,614	40.4%	2,377	59.6%	
BMI (mean, SD)	23.9 (5.2)		24.1 (4.8)		0.006
Physical activity					
Low level	1,475	35.3%	2,707	64.7%	0.000
Moderate	1,402	38.5%	2,243	61.5%	
High	2,198	42.8%	2,939	57.2%	
Education					
No school	2,399	42.8%	3,201	57.2%	0.000
Primary	956	36.7%	1,646	63.3%	
Middle	1,173	43.3%	1,535	56.7%	
Higher education	904	37.9%	1,481	62.1%	
Fruit and vegetable consumption					
Insufficient	2,704	44.8%	3,336	55.2%	0.000
Sufficient	2,748	37.5%	4,579	62.5%	
Fuel used at home					
Clean	2,790	37.8%	4,588	62.2%	0.000
Unclean	2,650	44.8%	3,265	55.2%	
Annual household income					
≤15,000¥	3,147	47.1%	3,529	52.9%	0.000
>15,000¥	2,263	35.4%	4,129	64.6%	
Location of residence					
Rural	2,524	37.1%	4,276	62.9%	0.000
Urban	2,928	44.6%	3,639	55.4%	