

**Supplementary Material:**

**Supplementary Table S1:** Summary of the second-order interactions between variables in the final GEE model on the full population.

**Supplementary Table S2:** Summary of the second-order interactions between variables in the sensitivity analysis of the GEE model performed on the subgroup in whom the Effort Reward Imbalance score was collected for the pre-pandemic, lockdown 1 and lockdown 2 periods.

**Supplementary Table S3:** Exploratory analysis of factors associated with ERI score as a quantitative variable for each period of interest, using linear bivariate and multivariate analysis.

**Supplementary Figure S1:** Sensitivity analysis of the GEE models, using the subgroup of respondents in whom the ERI was collected for the pre-pandemic, lockdown 1 and lockdown 2 periods.

**Supplementary Table S1.** Summary of the second-order interactions between variables in the final GEE model on the full population.

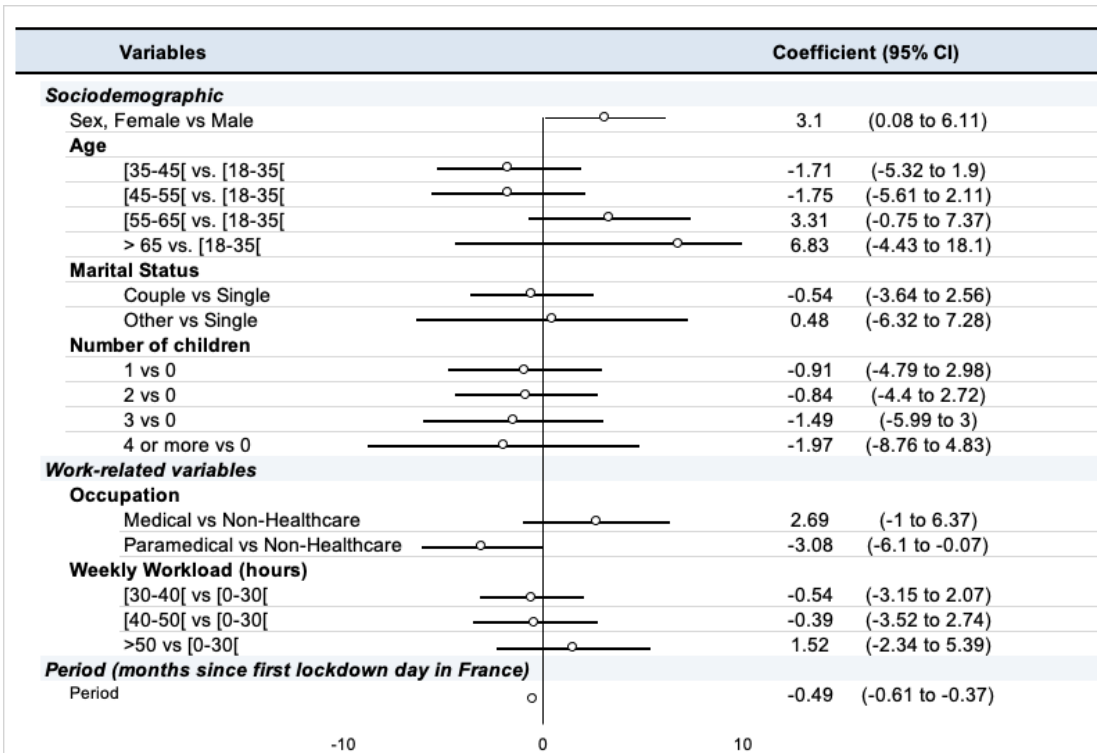
<b>Variable Interaction Term</b>	<b>Coefficient</b>	<b>95% CI</b>	<b><i>p</i>-Value</b>
occupation [medical] * Nb Hours per Week [>50]	-1.42	-2.66 to -0.18	0.025
sex [Female] * number of children [4 or more]	-10.36	-17.92 to -2.80	0.007
sex [Female] * Nb Hours per Week [30–40]	1.12	0.06 to 2.18	0.038
age [35–45] * number of children [1]	-7.42	-12.59 to -2.25	0.005
age [above 65] * Nb Hours per Week [30–40]	-4.39	-7.68 to -1.09	0.009
age [above 65] * Nb Hours per Week [40–50]	-2.88	-5.60 to -0.17	0.037
marital status [other] * number of children [3]	-14.92	-28.95 to -0.88	0.037
Nb Hours per Week [>50] * period	-0.34	-0.57 to -0.11	0.004
Nb Hours per Week [40–50] * period	-0.28	-0.49 to -0.06	0.011

**Supplementary Table S2.** Summary of the second-order interactions between variables in the sensitivity analysis of the GEE model performed on the subgroup in whom the Effort Reward Imbalance score was collected for the pre-pandemic, lockdown 1 and lockdown 2 periods.

Variable Interaction Term	Coefficient	95% CI	<i>p</i> -Value
occupation2 [paramedical] * age [above 65]	22.17	3.00 to 41.34	0.023
sex [Female] * age [35–45]	–8.59	–16.87 to –0.31	0.042
age [above 65] * marital status [as couple]	–29.75	–52.05 to –7.46	0.009
age [above 65] * Nb hours per week [30–40]	–22.86	–45.41 to –0.31	0.047
age [above 65] * Nb hours per week [40–50]	–18.11	–36.16 to –0.06	0.049
marital status [other] * number of children [1]	–29.81	–47.95 to –11.66	0.001

**Supplementary Table S3.** Exploratory analysis of factors associated with ERI score as a quantitative variable for each period of interest, using bivariate and multivariate analysis.

Variables	Pre-pandemic Period				Lockdown 1				Lockdown 2			
	Bivariate	Multivariate			Bivariate	Multivariate			Bivariate	Multivariate		
	<i>p</i> -Value	Estimate	95% CI	<i>p</i> -Value	<i>p</i> -Value	Estimate	95% CI	<i>p</i> -Value	<i>p</i> -Value	Estimate	95% CI	<i>p</i> -Value
Age (reference [35–45])	< 0.001				0.08				0.48			
Age [45–55]		−0.86	[−3.3 : 1.6]	0.49		0.6	[−1.3 : 2.5]	0.5		–	–	–
Age [55–65]		4.9	[2.2 : 7.6]	< 0.001		2.2	[−0.05 : 4.5]	0.05		–	–	–
Age > 65]		11.1	[5.1 : 17]	< 0.001		−3.4	[−8.6 : 1.8]	0.2		–	–	–
Age [< 35]		0.9	[−1.9 : 3.8]	0.52		2.2	[0.1 : 4.3]	0.04		–	–	–
Marital Status (Reference : Single)	0.9				0.9				0.6			
Marital Status : Couple		–	–	–		–	–	–		–	–	–
Marital Status : Other		–	–	–		–	–	–		–	–	–
Number of children (reference : 0)	0.03				0.049				0.75			
Number of children : 1		1.14	[−1.8 : 4.1]	0.45		−0.9	[−3.1 : 1.3]	0.4		–	–	–
Number of children : 2		−0.02	[−2.6 : 2.6]	0.99		−0.1	[−2.1 : 1.8]	0.9		–	–	–
Number of children : 3		0.03	[−3.2 : 3.3]	0.98		0.6	[−1.9 : 3.2]	0.6		–	–	–
Number of children : ≥ 4		2.71	[−1.9 : 7.4]	0.25		3.3	[−0.6 : 7.3]	0.1		–	–	–
Sex (reference : Male)	0.02				0.16				0.17			
Sex : Female		1.06	[−1.1 : 3.3]	0.34		–	–	–		–	–	–
Occupation (reference : Non-Healthcare)	< 0.001				< 0.001				0.02			
Occupation : Medical		0.73	[−1.6 : 3.1]	0.54		4.1	[2 : 6.3]	< 0.001		4.9	[0.6 : 9.2]	0.03
Occupation : Paramedical		−2.86	[−5.5 : −0.2]	0.03		0.8	[−1.1 : 2.7]	0.4		−2.2	[−5.7 : 1.3]	0.22
Weekly working hours (reference : [30–40])	< 0.001				< 0.001				0.67			
Weekly working hours : < 30		2.24	[−0.8 : 5.3]	0.14		−1.5	[−3.6 : 0.5]	0.1		–	–	–
Weekly working hours : > 50		4.36	[1.5 : 7.2]	< 0.01		4.4	[2 : 6.9]	< 0.001		–	–	–
Weekly working hours : 40–50		2.89	[0.4 : 5.4]	0.02		1.9	[−1 : 3.8]	0.07		–	–	–
<b>Performance metrics</b>												
RSE (Residual Standard Error)	–	0.42			–	0.55			–	0.51		
Adjusted R <sup>2</sup>	–	0.02			–	0.01			–	0.003		



**Supplementary Figure S1.** Summary of sensitivity analysis for the GEE model with exchangeable covariance structure (GEE-ex), performed on the subgroup in whom the Effort Reward Imbalance score was collected for the pre-pandemic, lockdown 1 and lockdown 2 periods.