

Supplementary Materials

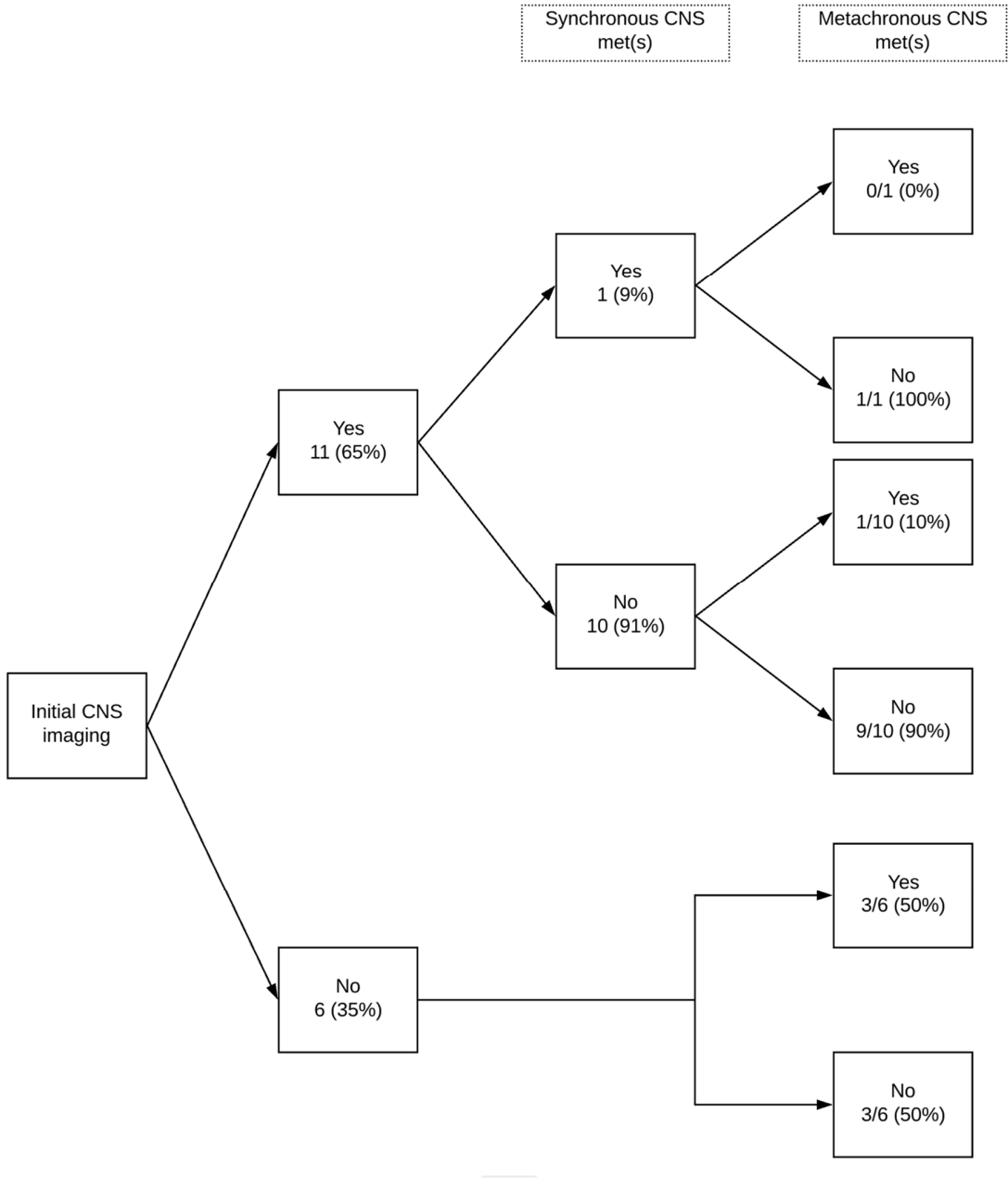


Figure S1. Synchronous and metachronous CNS metastases (*EGFR*-mutated NSCLC).

CNS = central nervous system; EGFR = epidermal growth factor receptor; met = metastasis; NSCLC = non-small cell lung cancer.

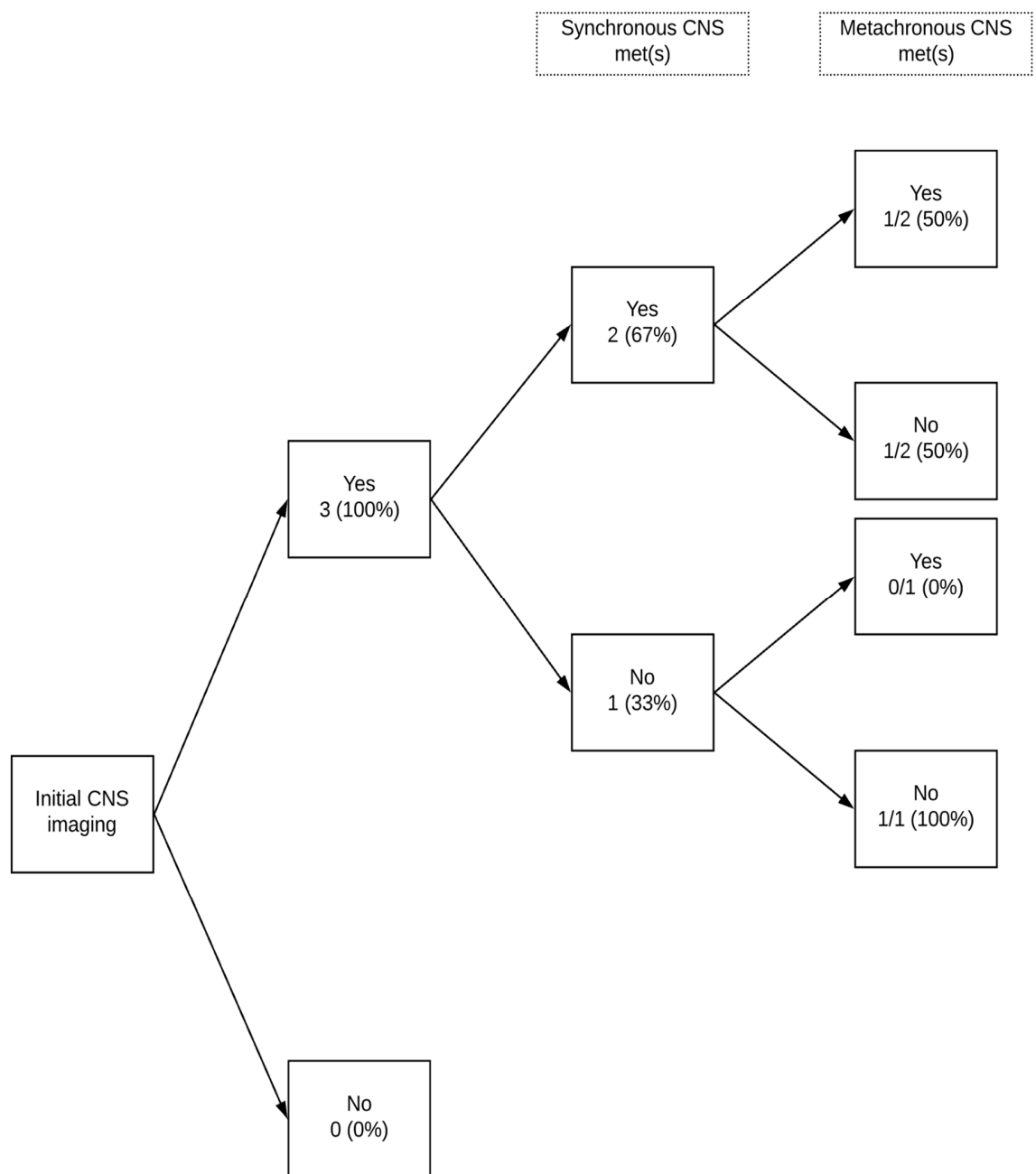


Figure S2. Synchronous and metachronous CNS metastases (*ALK*-rearranged NSCLC).

ALK = anaplastic lymphoma kinase; CNS = central nervous system; met = metastasis; NSCLC = non-small cell lung cancer.